

SKP-900 User's Manual

1. Introduction

SuperOBD SKP-900 Key Programmer is a hand-held device for reading and programming auto transponder keys, auto remote keys, and auto smart keys. It is strong in functions, easy to use, and cost-effective in price, and is the best choice for a locksmith shop and even for DIYs.

1.1 Features:

- Display: 80X65mm LCD
- Easy to read screen and friendly interface
- Operating temperature: -10℃ - 50 ℃
- Operation Voltage: DC 11V-28V
- Software Version: V2.0
- Wide Vehicle Coverage
- No tokens need for all software you already have in the machine
- Don't need PIN code when programming keys for many vehicles
- Can read PIN code for many vehicles
- Frequent update.
- Built-in connector design, only a few connectors needed

Supported Vehicles:

- Europe: ALFA, AUDI, CITROEN, FIAT, JAGUAR, OPEL, PEUGEOT, RENAULT, ROVER, SMART, SKODA, VW
- America: BUICK, CADILLAC, CHEVROLET, CHRYSLER, DODGE, FORD, GM, JEEP, LAND ROVER, LINCOLN,
- ASIA: ACURA, HONDA, HYUNDAI, INFINITI, KIA, LEXUS, MAZDA, MITSUBISHI, NISSAN, PROTON, SSANGYONG, SUBARU, SUZUKI, TOYOTA
- China: BRILLIANCE, BYD, CHANGAN, CHANG FENG, CHERY, DONG FENG, DONG FENG NISSAN, FAW, GEELY, GREAT WALL, HA FEI, HAINAN MAZDA, JAC, JIN BEI, LI FAN, LU FENG, LUXGEN, MAPLE, MG, ROEWE, ZOTYE 5008



—Enter —BACK —keyboard

[▲]—cursor UP [▼]—cursor DOWN [◀]—cursor LEFT [▶]—cursor RIGHT

SN: Tool Serial Number

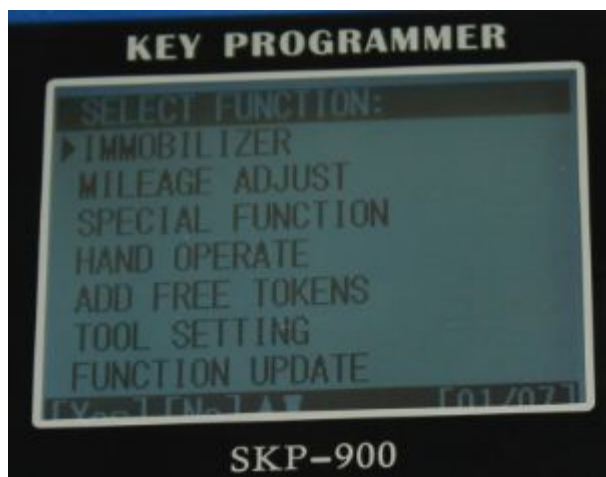
1.2 Support Protocols:

SAE-J1850 PWM, SAE-J1850 VPW, KWP2000, ISO-9141, CANBUS, SINGLE CAN

1.3 Packing List:

- SuperOBD SKP-900 main unit,
- Main Cable,
- Honda-3 connector,
- Kia-20 connector,
- Hyundai/Kia-10 connector,
- USB cable,
- SuperOBD SKP-900 User's Manual, CD

2. Menu Introduction



Menu has 7 options as follows:

2.1 IMMOBILIZER

It let you program auto transponder keys, auto smart keys and auto remote keys for European cars, American cars and Chinese cars.

2.2 MILEAGE ADJUST

It can allow you to read and change mileage data.

2.3 SPECIAL FUNCTION

It works with various adapters to identify chips.

2.4 HAND OPERATE

In certain condition, it can help you match keys and remotes manually.

2.5 ADD FREE TOKENS

The tokens for SKP-900 Key Programmer are limited. If you use up, you need to contact your dealer to add your tokens by free.

2.6 TOOL SETTING

It can provide you with hardware Info and SN of your device.

2.7 FUNCTION UPDATE

It can help you update software online if possible.

3. Operation Instruction

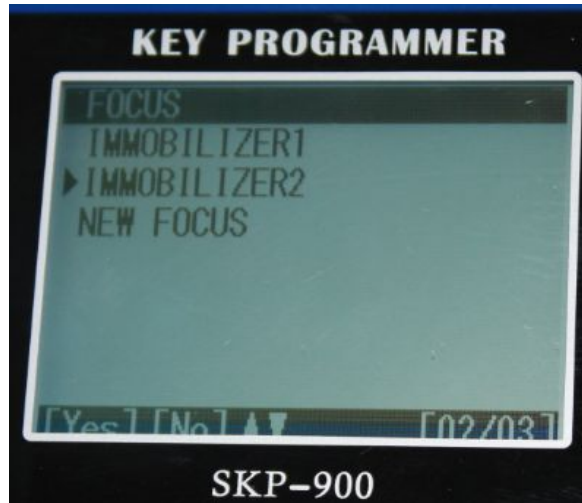
This operation instruction will tell you how to use your scan tool. For other vehicles, you can perform it by referring to the instructions or according to operation tips on the screen.

Take FORD as an example, if all key is lost, you can use SuperOBD SKP-900 to match key. Firstly, you must connect this device to the OBD II connector via Main Cable.

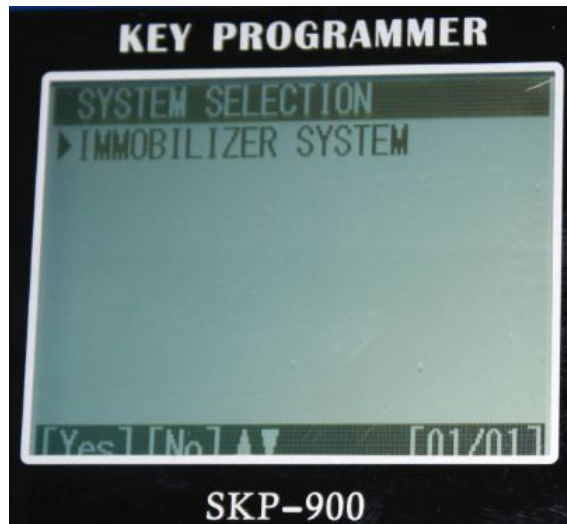
Select Vehicle: [FORD]→[FOCUS]:



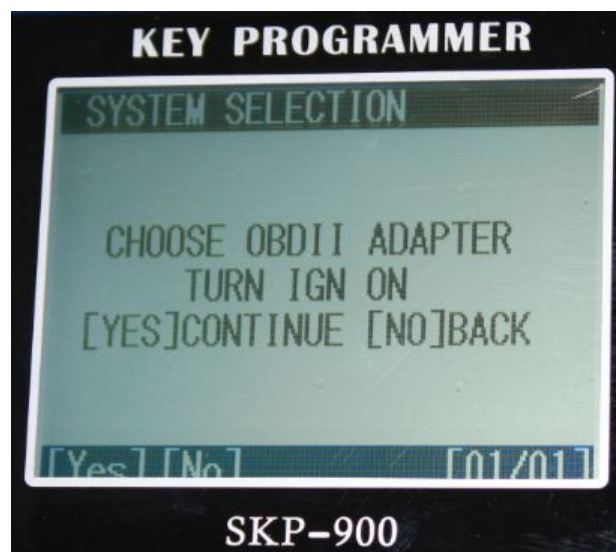
Press [YES], and select 'IMMOBILIZER' according to your vehicle:



Press [YES]



Press [YES]



Press [YES]

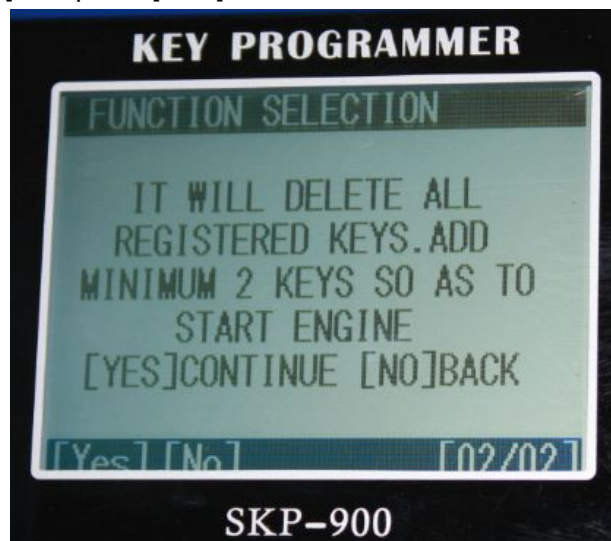


ADD KEY: for matching new key

DELETE KEY: for deleting all registered keys and so the lost keys can't be used neither

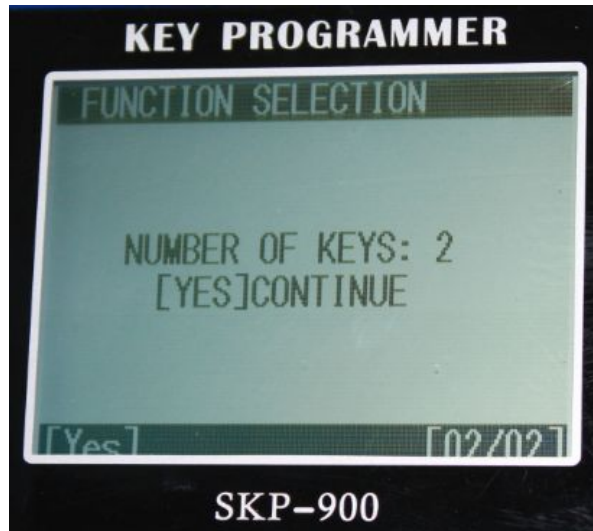
We suggest that you delete all keys before matching new keys.

Select [DELETE KEY] and press [YES]:

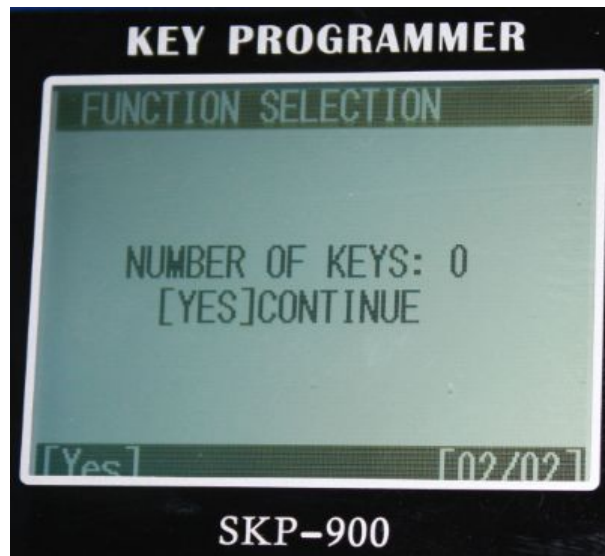


As shown on the screen, you must add at least 2 new keys to start the engine after deleting all registered keys.

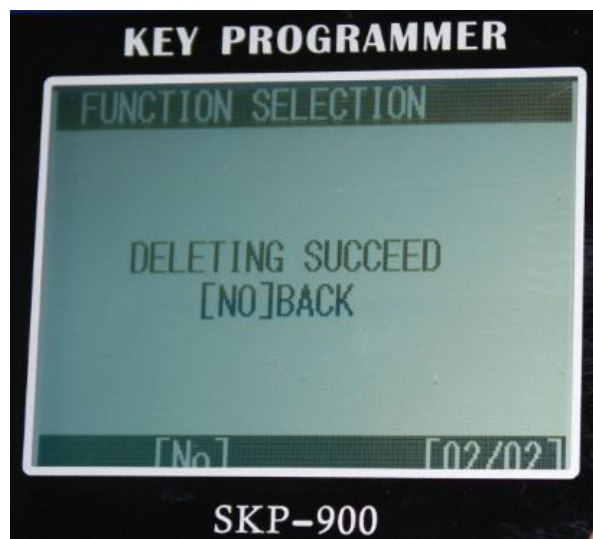
Press [YES]



Press [YES]



Press [YES]

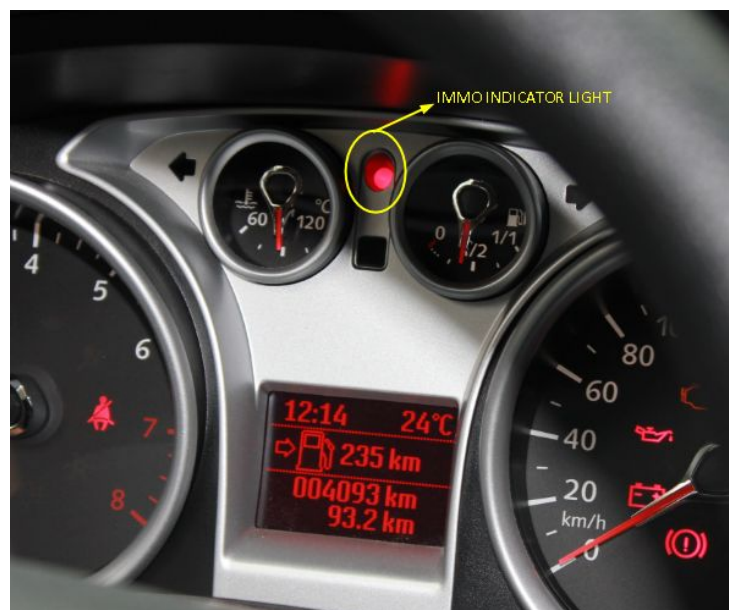
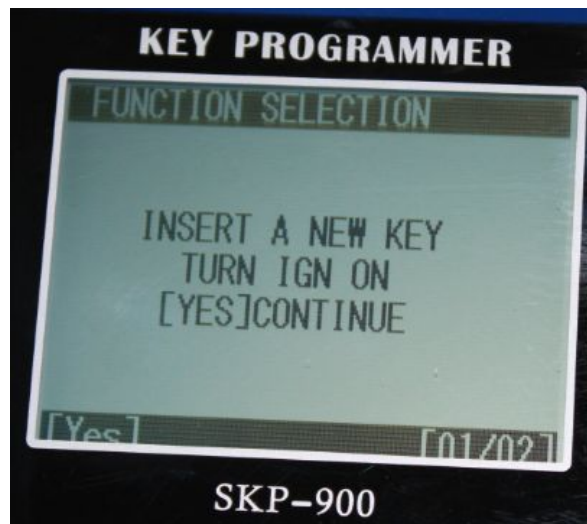


It shows that deleting keys is succeeded.

Press [NO]:

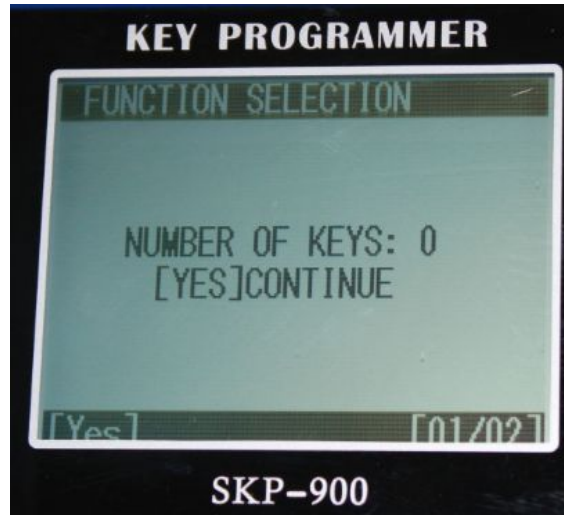


Press [YES]

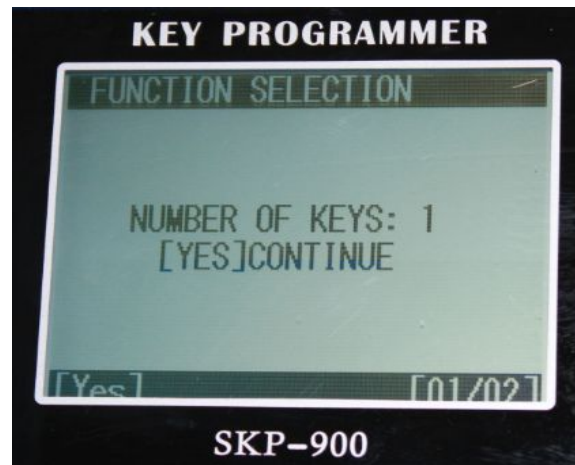


According to the instruction on screen, you should insert a new key and turn IGN on. You may see the IMMO indicator light will flash when inserting a key which cannot start Engine.

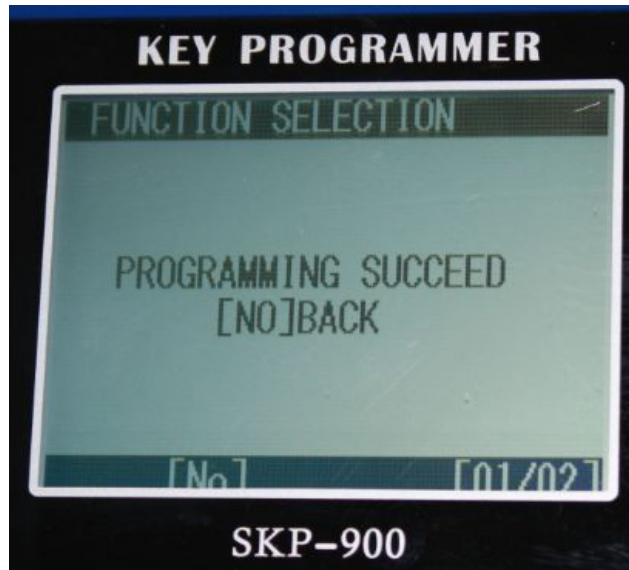
Press [YES]



Press [YES]



Press [YES]

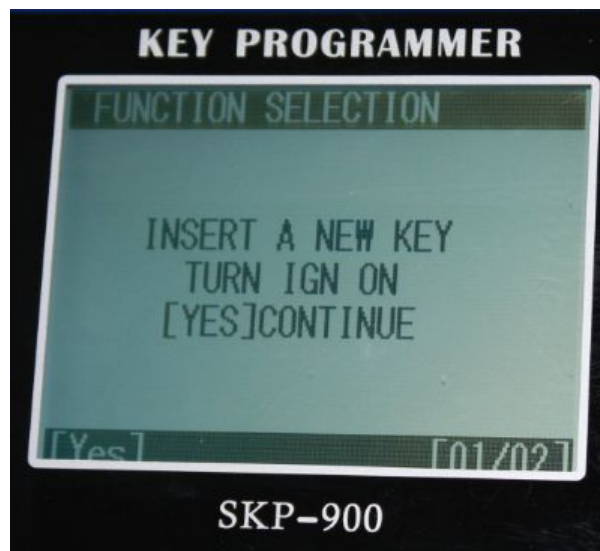


You have successfully programmed the first new key.

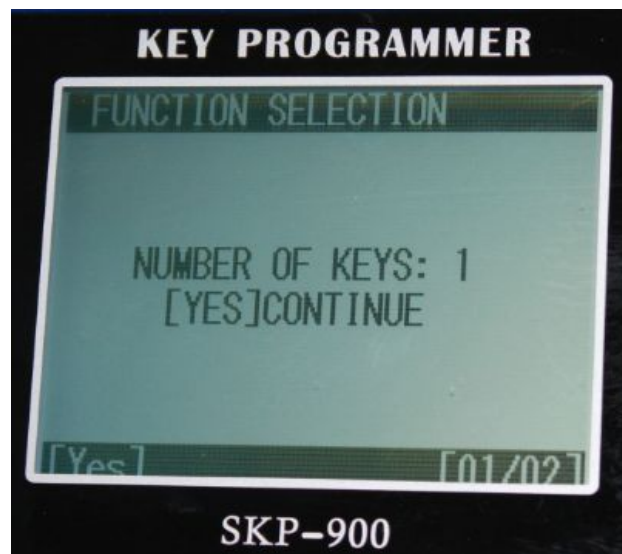
Press [NO]:



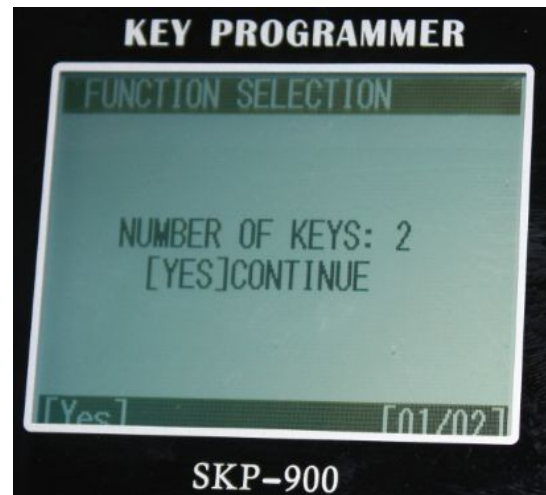
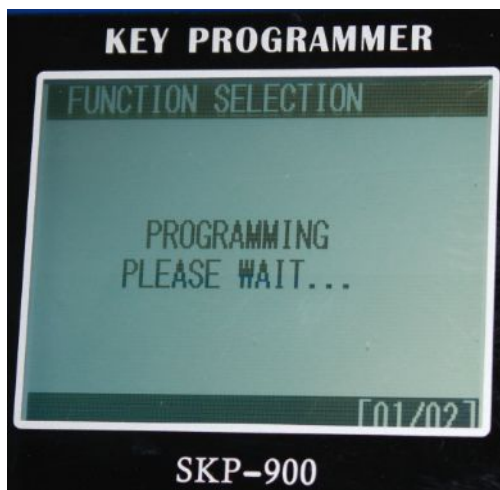
Press [YES], continue to program another key:



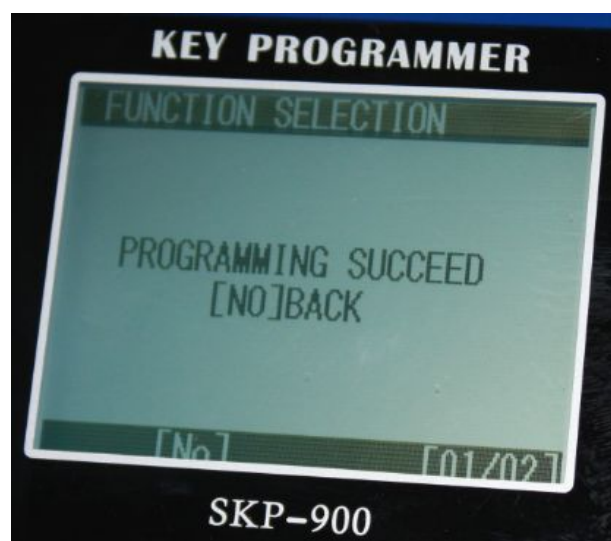
Press [YES]



Press [YES]



Press [YES]



So far two new keys have been successfully programmed. Now you can use any one of them to start the engine. Of course, if you want add more keys, you just need to repeat the above operations.

4. Update software

Make sure you have installed USB Driver before updating software.

4.1 Install Driver

For the first time to connect your device with PC via a USB cable, the computer screen will remind you install the USB driver as follow:



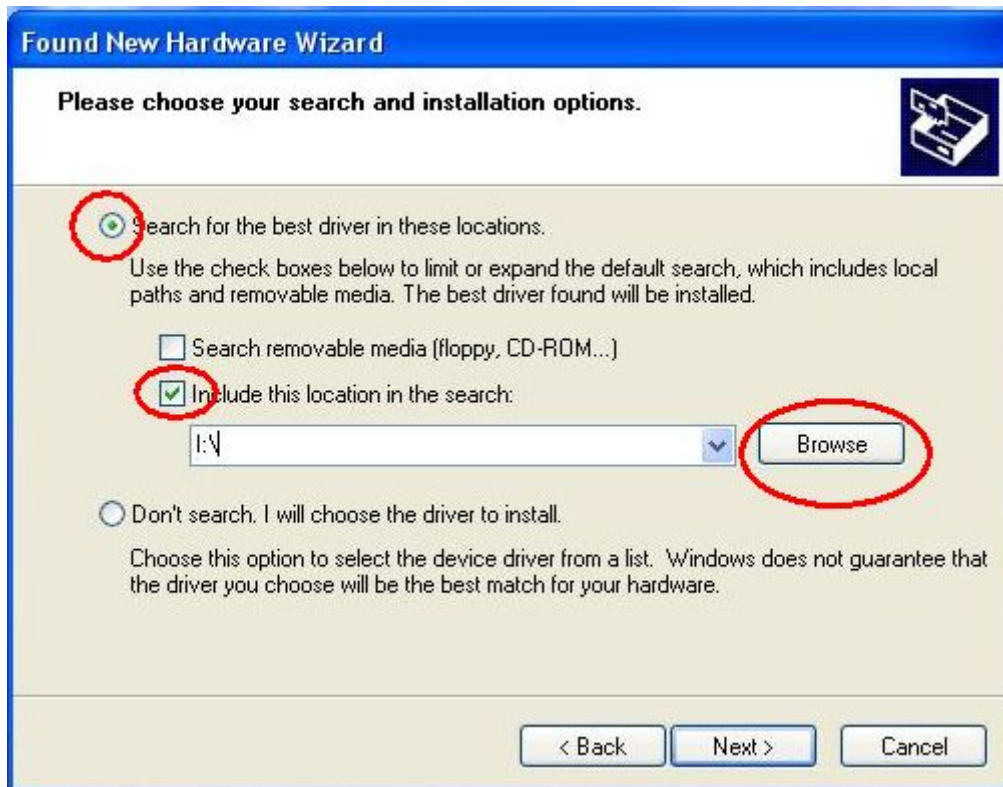
Change selection->



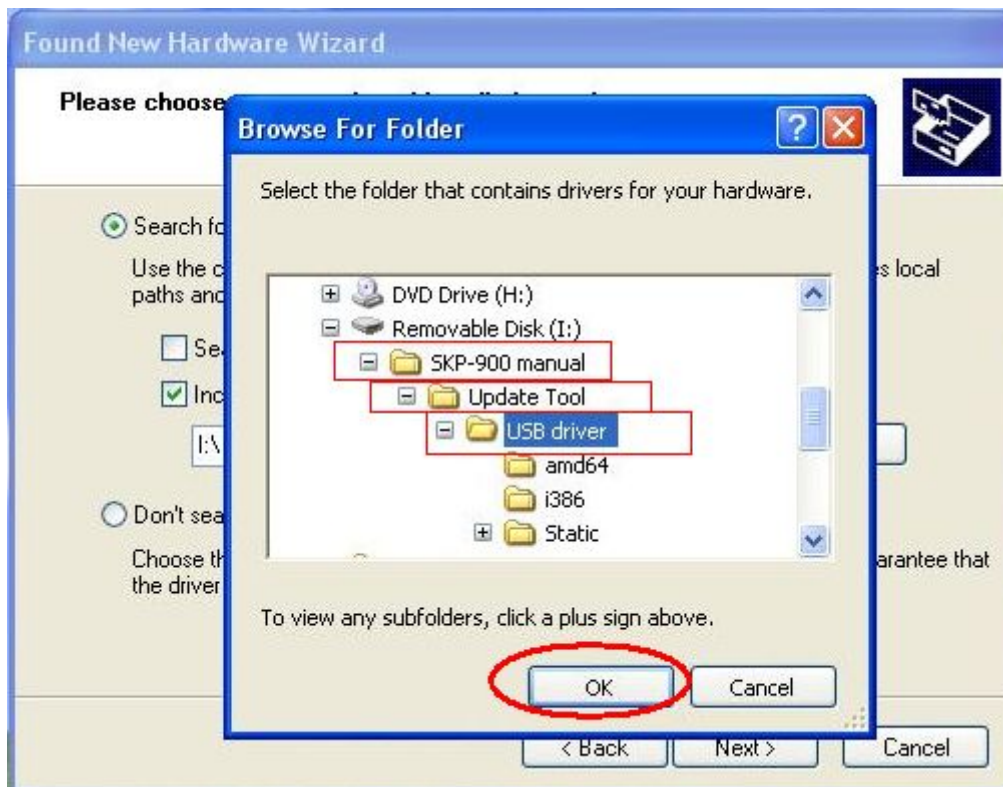
Next->



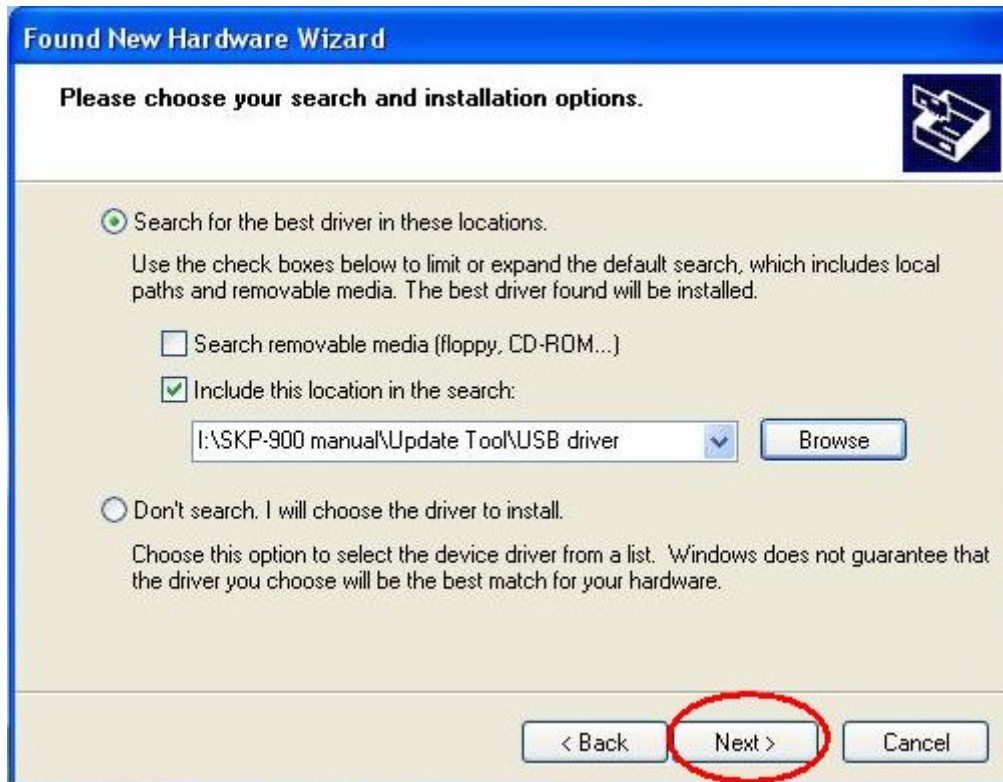
Next->



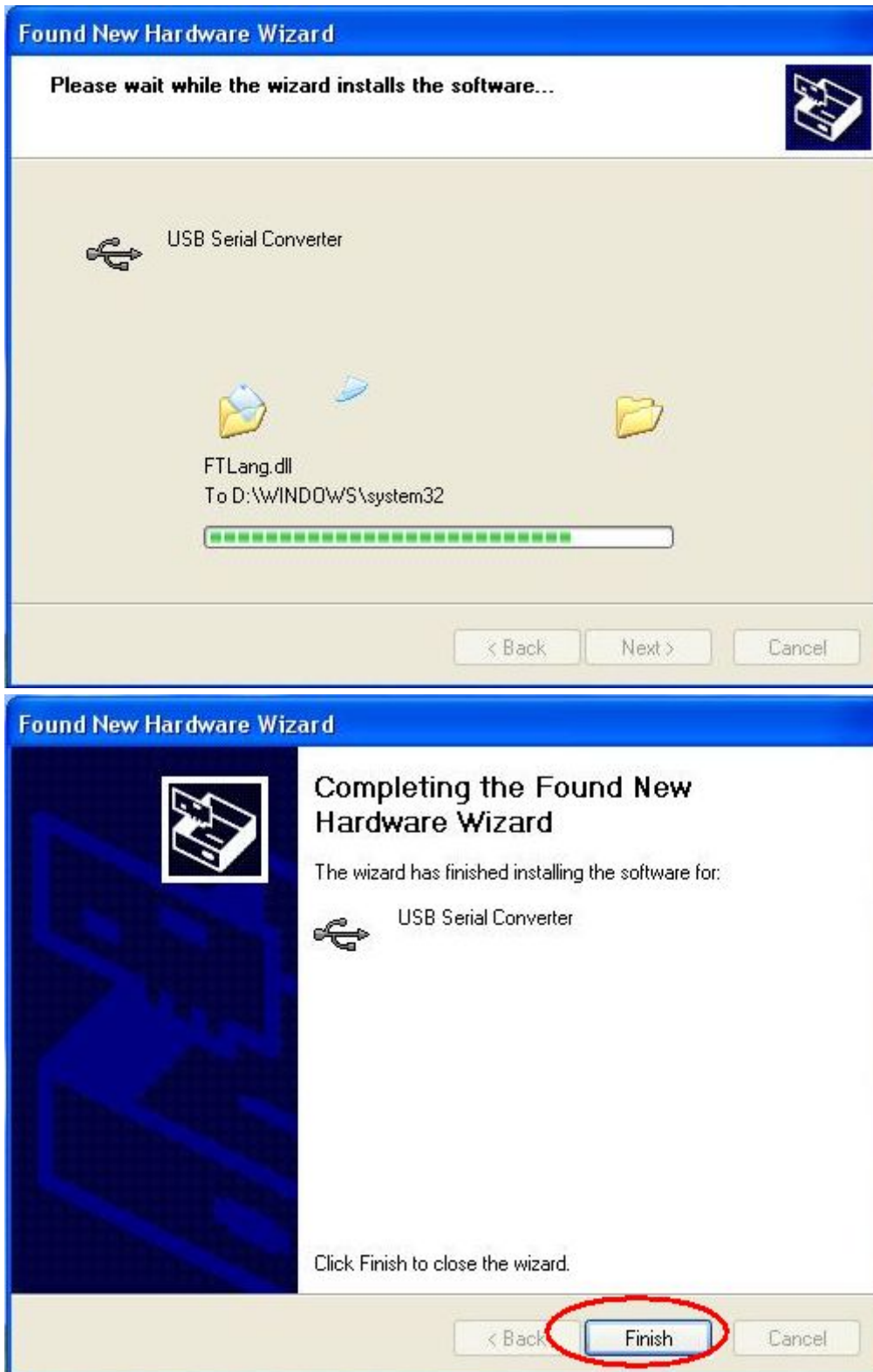
Browse the USB driver folder->



OK->



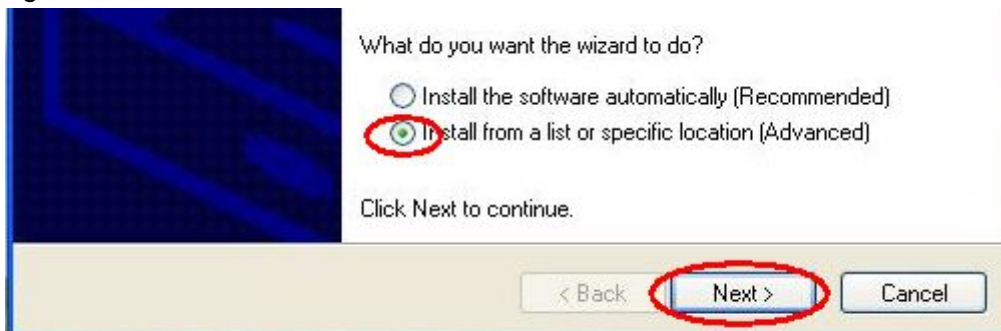
Continue Anyway->



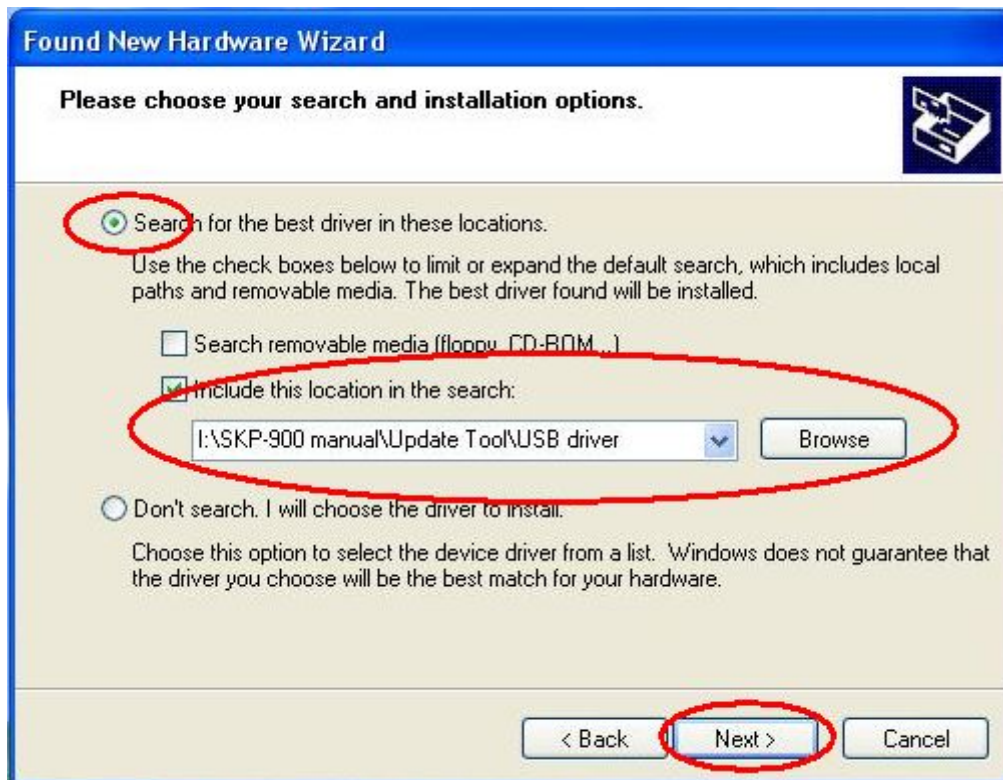
Click Finish, wait about 2 seconds->



Change select->



Next->



Next->



Click Continue Anyway->



Click Finish.



Installation finished.

4.2 Device Operation (two ways to enter update mode)

4.2.1 Connect your device to PC via USB Cable, and do not make any operation as follows:

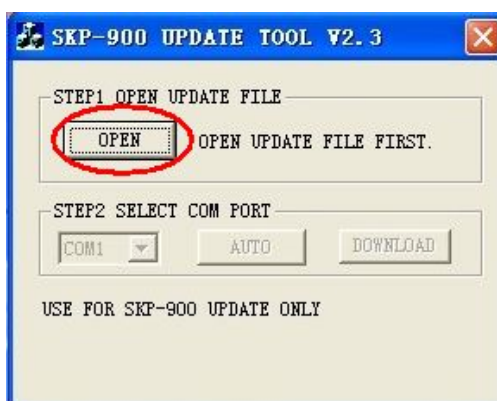


4.2.2 Select "FUNCTION UPDATA" in main Menu and press [YES]:

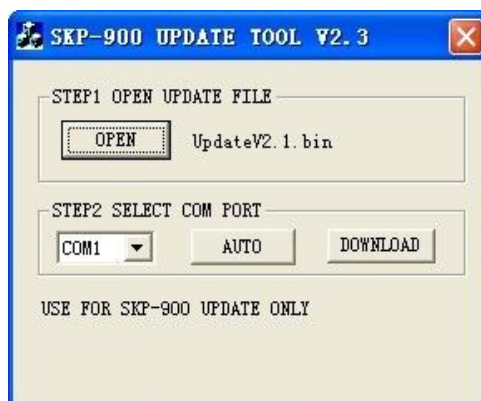
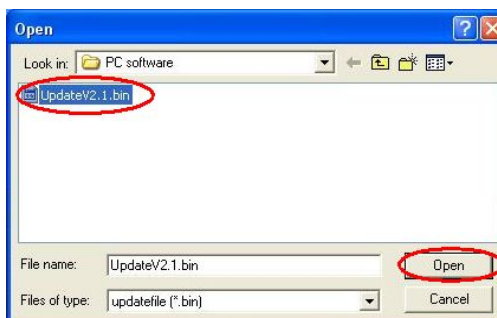


4.3 Run “SuperOBD SKP-900 Update Tool.exe”

4.3.1 Run SuperOBD SKP-900 Update Tool.exe->



4.3.2 Press button “OPEN” to load update file->

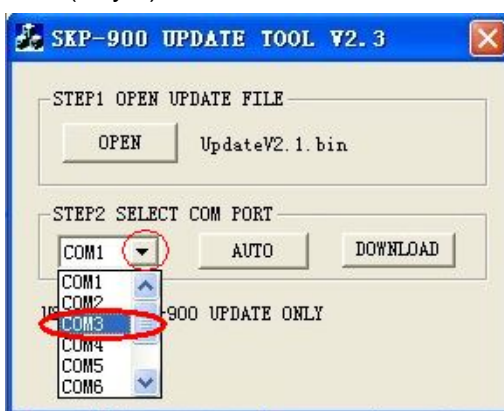


4.4 Select COM port (TWO WAYS TO SELECT COM PORT)->

4.4.1 Press button "AUTO"(way 1)

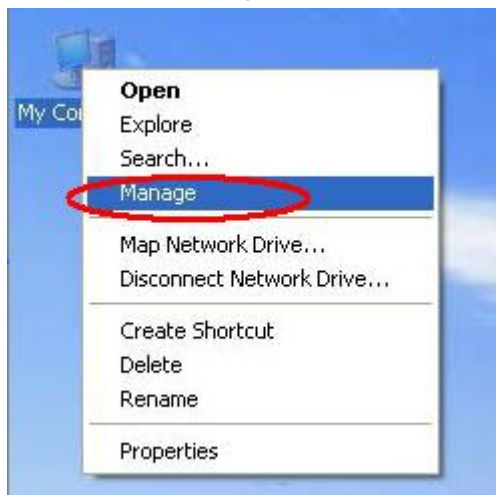


4.4.2 Manually choose(way 2)

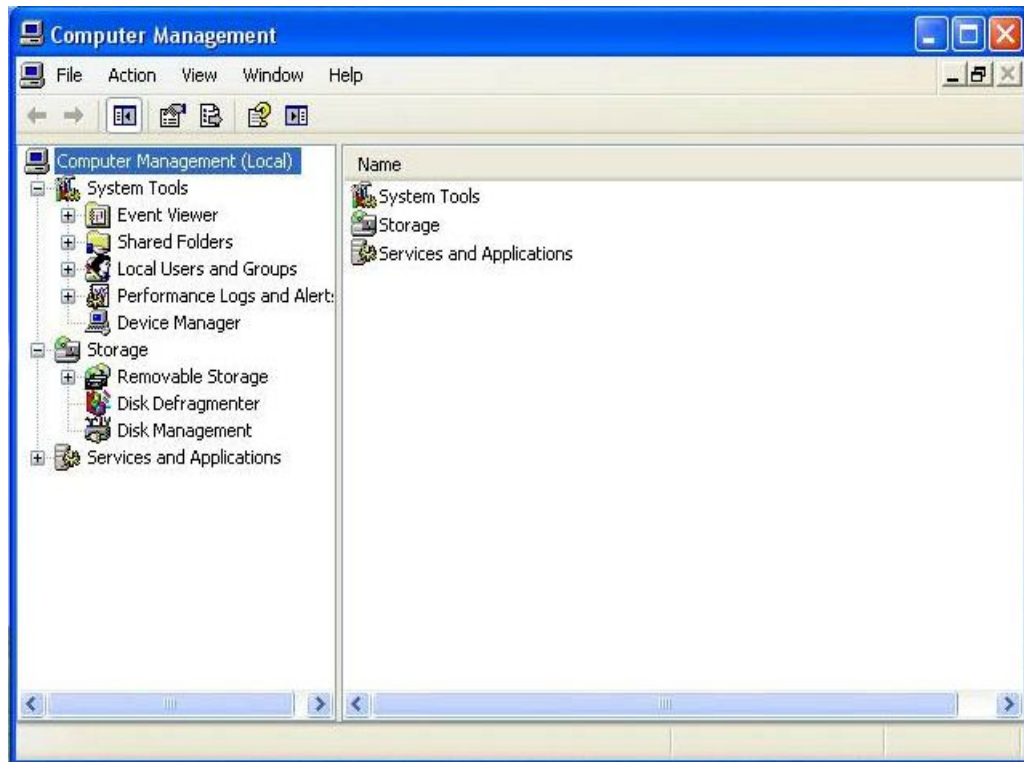


4.4.2.1 How to get Port Number:

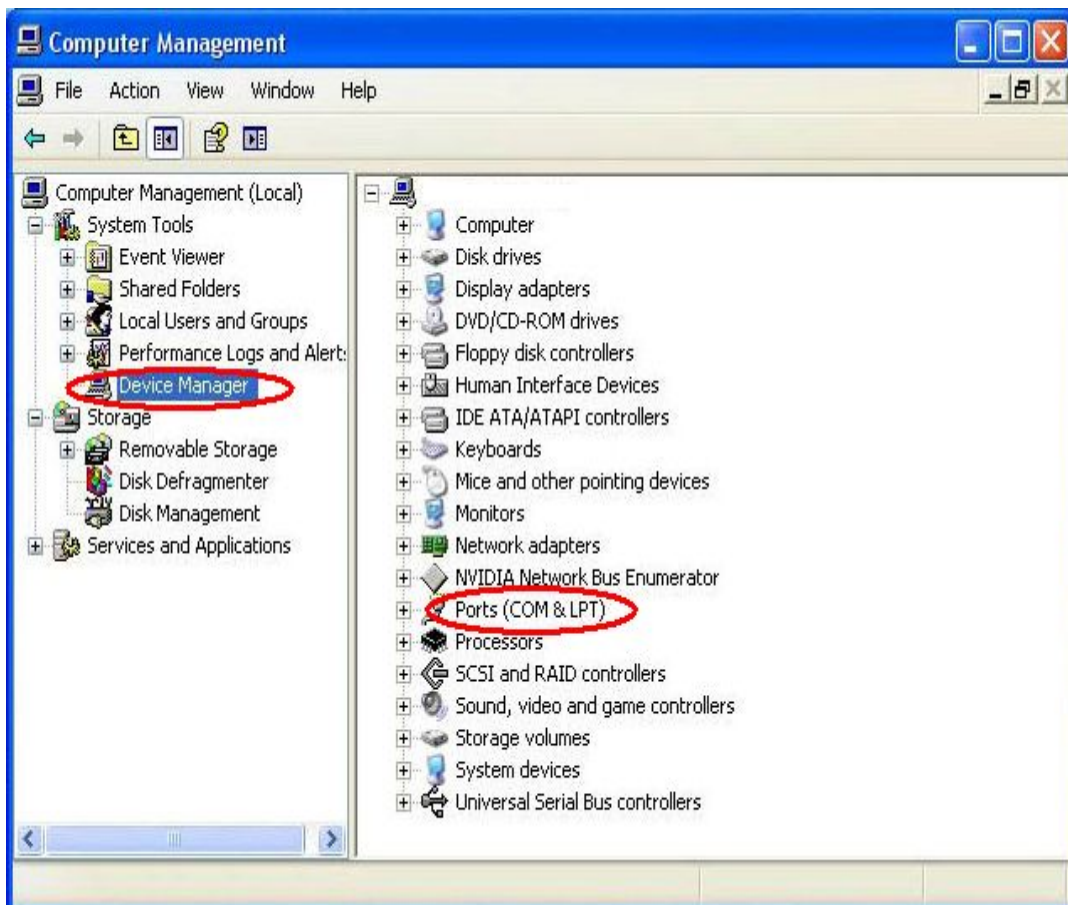
"My Computer"-> Click the right mouse button->Manage->:



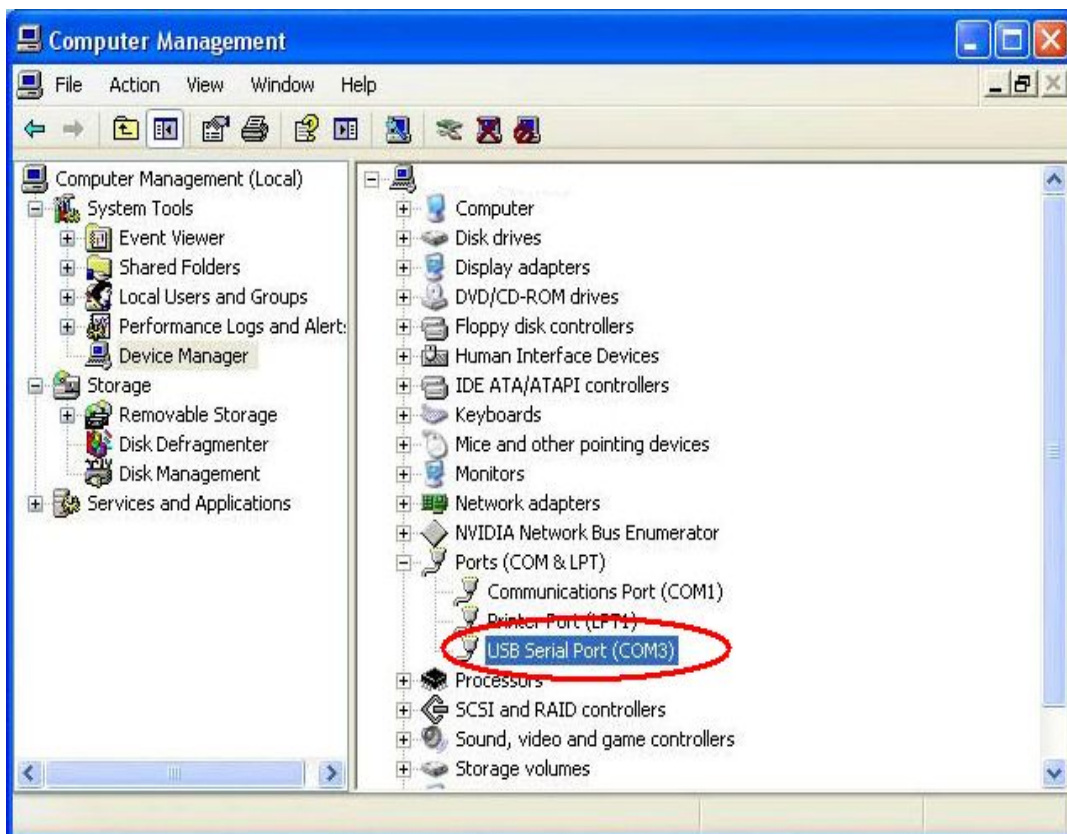
Device Manager->



Ports(COM&LPT)->



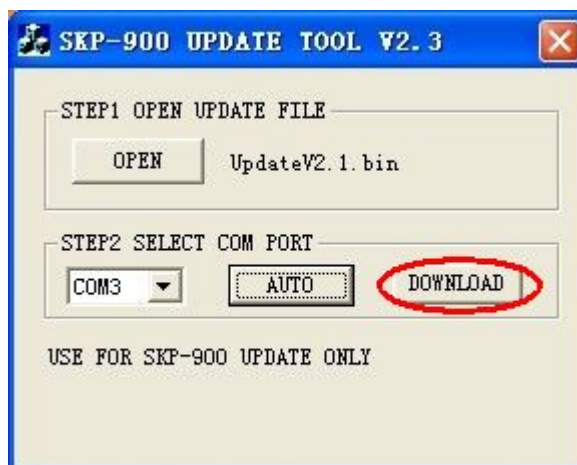
Find USB Serial Port->

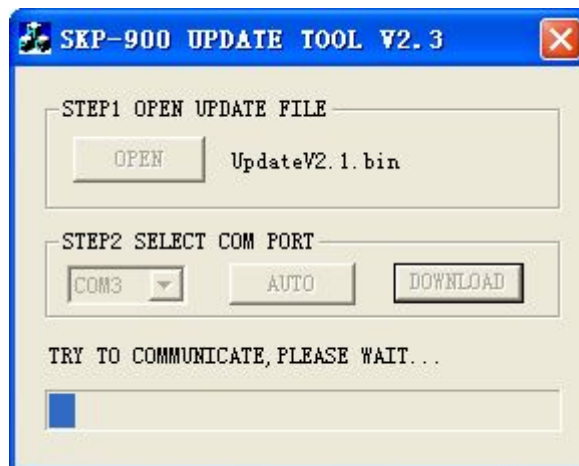


COM port is COM3.

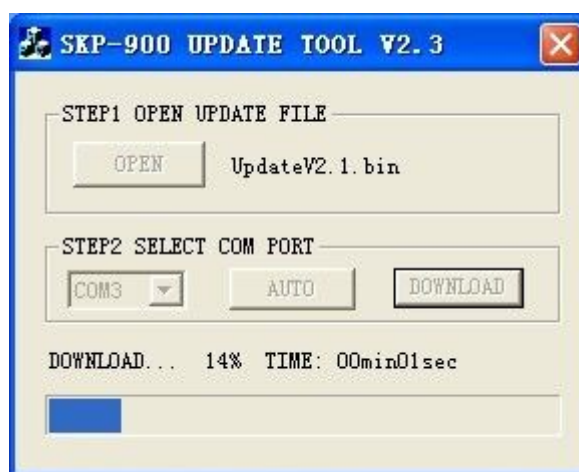
4.5 Download file

Press button "DOWNLOAD"->

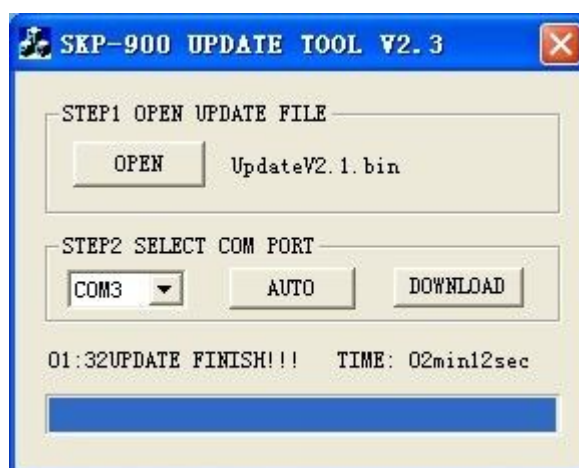




COMMUNICATE OK->



DOWNLOAD FINISH->



Updating finished. Disconnect USB cable and connect it with PC again to check the main Menu which has been updated or not.