

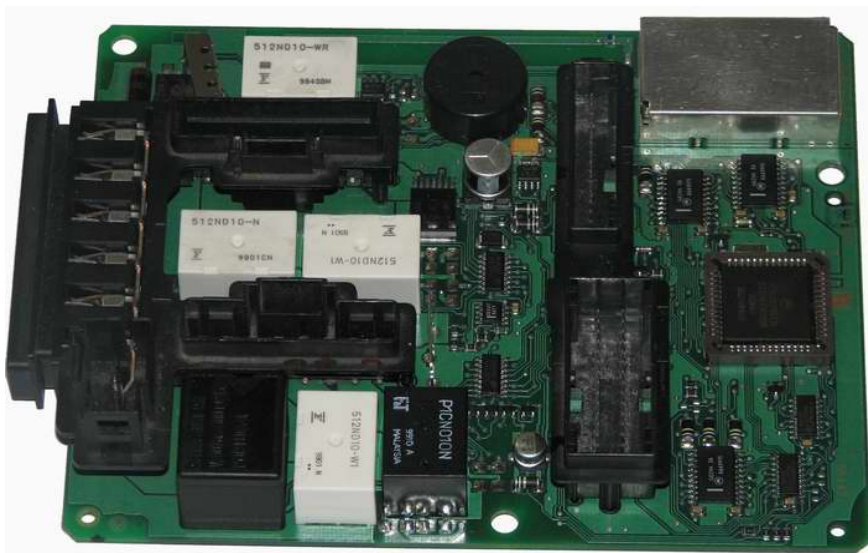
# Renault PIN Code reading and Key programming

Reading immobilizer PIN code and Key programming on Renault Megane and Megane Scenic modules with UCBIC (BSI) module from 1999 to 2003 year via OBD II.

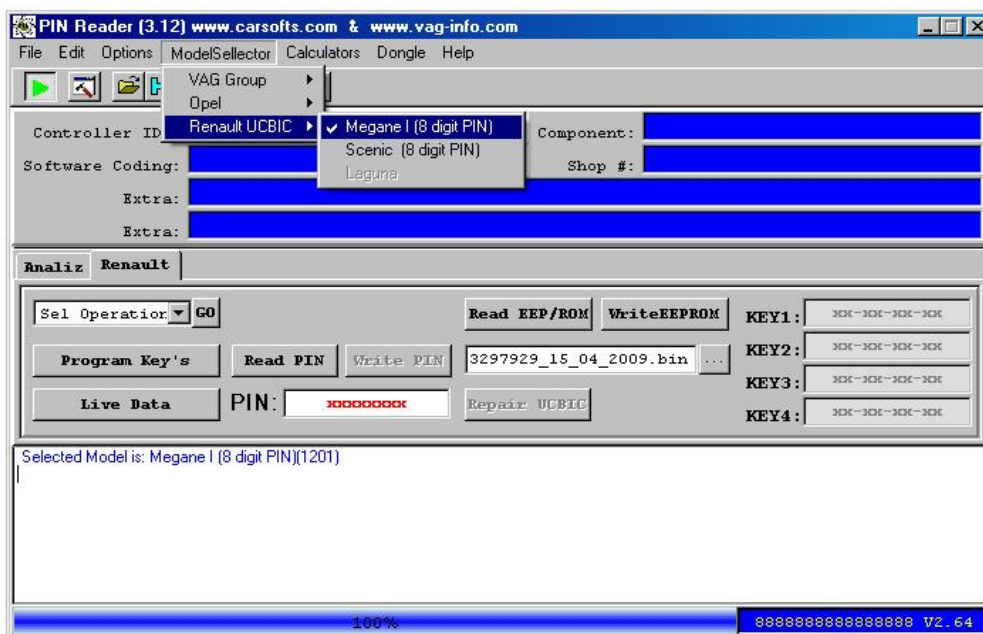
Renault Megane - 1999 to 2003

Renault Megane Scenic - 1999 to 2003

UCBIC (BSI) module like this:



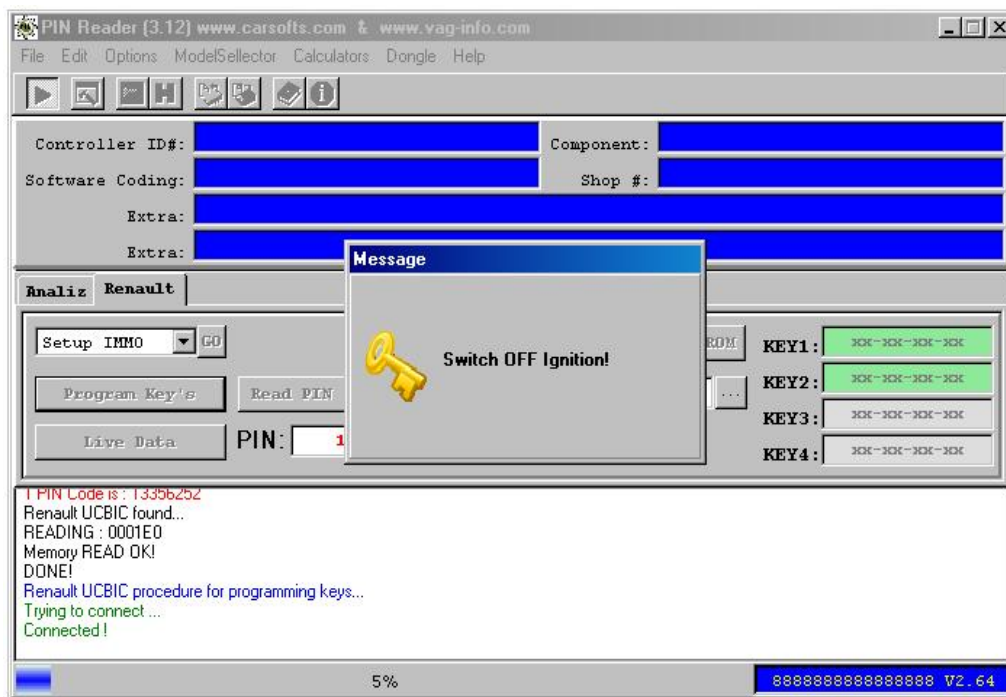
PIN Code reading and Key programming procedure:



Start PINReader.exe Ver 3.12 Select from Model Selector

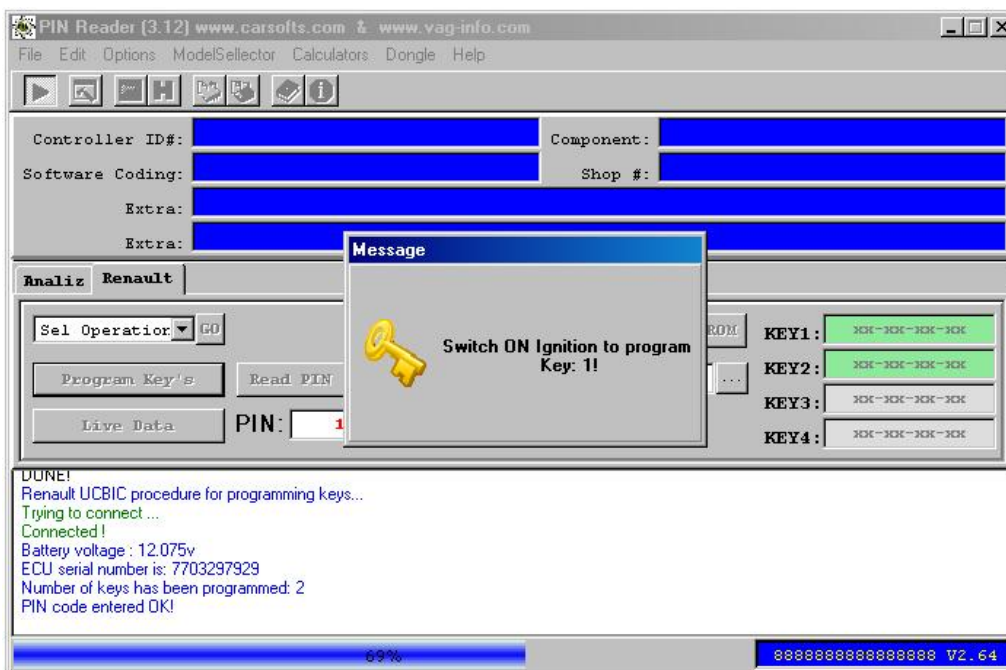
"Renault UCBIC" -> "Megane I (8 digit PIN)" or "Scenic (8 digit PIN)".

Click "Program Key's" for PIN reading and Key programming...

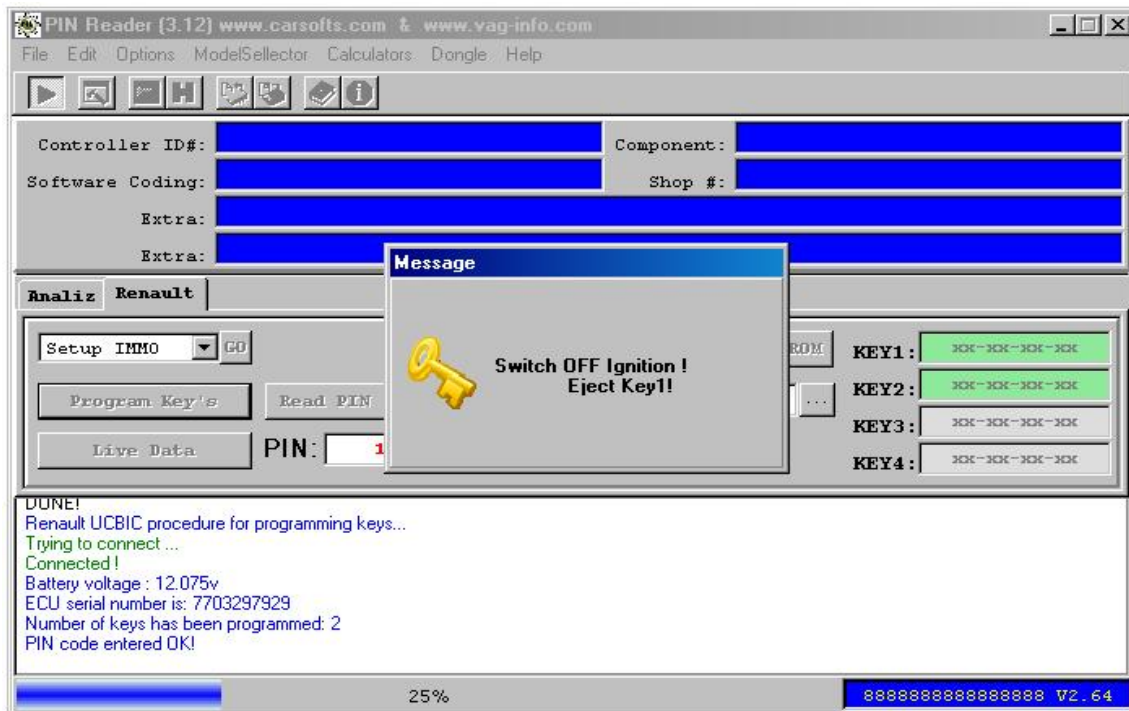


After Read PIN code started "Renault Megane/Scenic Key programming procedure".

After this message insert first Key to program.

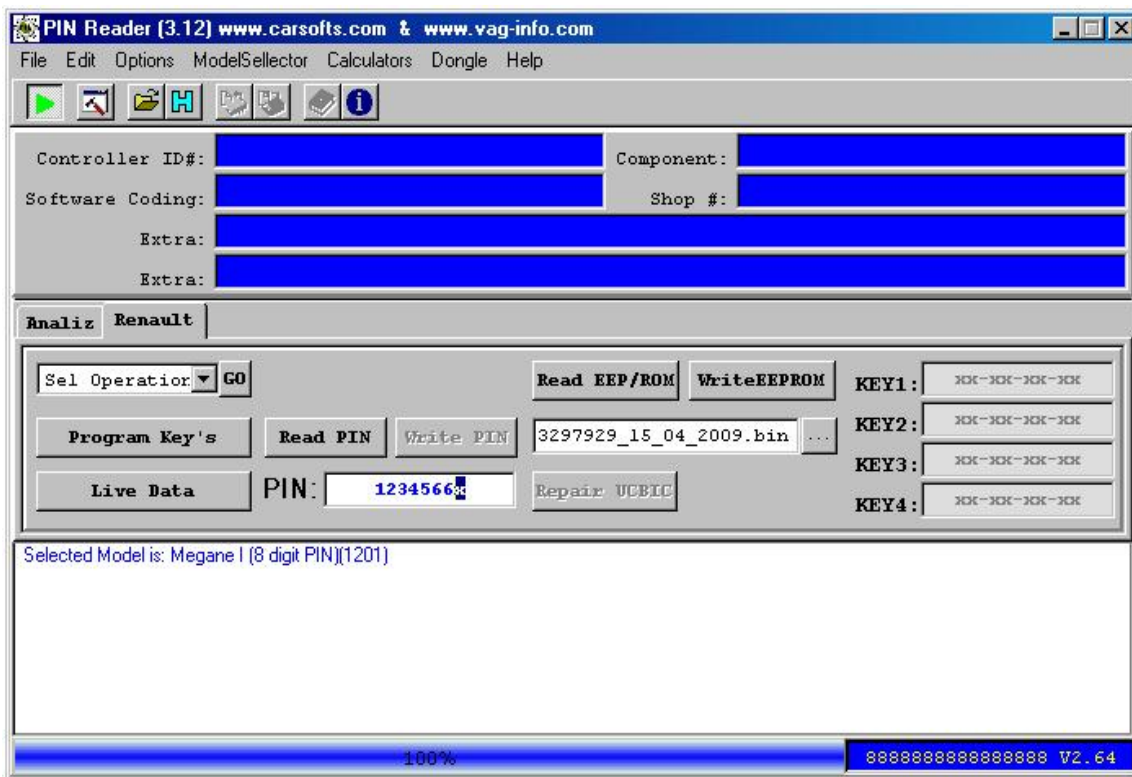


## Switch On Ignition ...



After "Switch OFF Ignition" first Key is programmed.

Programming procedure for the next key is analogous ...



## Manual entering PIN code .

The screenshot shows the PIN Reader (3.12) interface. The main window displays fields for Controller ID#, Software Coding, and Extra information. The 'Analiz Renault' tab is active, and the 'Read Live Data' operation is selected. The PIN field is filled with 'XXXXXXXX'. The status bar shows 14% progress and the ECU serial number 7703297929.

The 'Show Live data' panel on the right displays the following data:

Live data name	Data state
Module Serial number	7703297929
Ignition State	ON
Keycode State	VALID
Blank Immo	NO
Keycode Rx data	NO RECEIVE DATA
Keycode program done	NO
Engine IMMO	ACTIVE
IMMO coil type	IMMO1
KEYs programmed	2
Battery voltage	12.075v
Error Counter Restart Module	2
Error Counter Byte1	0
Error Counter Byte2	7
Error Counter3 IMMO1_2	0
Error Counter2 IMMO1_2	0
Error Counter1 IMMO1_2	0
byte_2A3	0
byte_2A4	93

## Read Live Data from UCBIC module.

The screenshot shows the PIN Reader (3.12) interface with the 'Setup IMMO' operation selected. A warning message is displayed: 'Warning: This BitField must be always Enabled! Because Remote control stop functioning!'. The 'Setup IMMO parameters' panel on the right shows the following bit field states:

Bit filed name	Bit field state
EEPROM_1F.bit0	<input type="checkbox"/> Disabled
EEPROM_1F.bit1	<input type="checkbox"/> Disabled
EEPROM_1F.bit2	<input type="checkbox"/> Disabled
EEPROM_1F.bit3	<input type="checkbox"/> Disabled
EEPROM_1F.bit4	<input type="checkbox"/> Disabled
EEPROM_1F.bit5	<input type="checkbox"/> Disabled
EEPROM_1F.bit6	<input checked="" type="checkbox"/> Enabled
Enable Remote control	<input checked="" type="checkbox"/> Enabled
Immobiliser	<input checked="" type="checkbox"/> Enabled
EEPROM_20.bit0	<input type="checkbox"/> Disabled
EEPROM_20.bit1	<input type="checkbox"/> Disabled
EEPROM_20.bit2	<input type="checkbox"/> Disabled
EEPROM_20.bit3	<input type="checkbox"/> Disabled
Change system IMMO1 or IMMO2	<input checked="" type="checkbox"/> IMMO1

## Read and change Setup IMMO parameters .