

PSA BSI Tool User Manual

Table of Contents

- 1. Safety Precautions and Warnings.....3
- 2. General Information.....4
- 3. Hardware Overview5
 - 3.1. Tool Description5
 - 3.2. Specifications.....6
 - 3.3. System Requirements.....7
- 4. Software Overview8
 - 4.1. Function.....9
- 5. Troubleshooting.....20
 - 5.1. “Device not connected”Error20
- 6. Warranty and Service21
 - 6.1. Limited One Year Warranty21

1. Safety Precautions and Warnings

To prevent personal injury or damage to vehicles and/or the tool, read this instruction manual first and observe the following safety precautions at a minimum whenever working on a vehicle:

- Always perform automotive testing in a safe environment.
- Wear safety eye protection that meets ANSI standards.
- Keep clothing, hair, hands, tools, test equipment, etc. away from all moving or hot engine parts.
- Operate the vehicle in a well ventilated work area: Exhaust gases are poisonous.
- Put blocks in front of the drive wheels and never leave the vehicle unattended while running tests.
- Use extreme caution when working around the ignition coil, distributor cap, ignition wires and spark plugs. These components create hazardous voltages when the engine is running.
- Put the transmission in PARK (for automatic transmission) or NEUTRAL (for manual transmission) and make sure the parking brake is engaged.
- Keep a fire extinguisher suitable for gasoline/chemical/electrical fires nearby.
- Don't connect or disconnect any test equipment while the ignition is on or the engine is running.
- Keep the tool dry, clean, free from oil/water or grease. Use a mild detergent on a clean cloth to clean the outside of the scan tool, when necessary.

2. General Information

Thank you for choosing PSA BSI Tool.

This manual includes the use of equipment notes, please read this manual carefully before use so that you can correctly use it.

All rights reserved. No part of this publication may be reproduced, stored in a retrieval system, or transmitted, in any form, or by any means, mechanical, electronic, photocopying, recording, or otherwise, without the prior written permission.

All copyright and trademarks acknowledged.

No patent liability is assumed with respect to the use of the information contained herein. Moreover, because we is constantly striving to improve its high-quality products, the information contained in this manual is subject to change without notice. Every precaution has been taken in the preparation of this manual. Nevertheless, we assumes no responsibility for errors or omissions. Neither is any liability assumed for damages resulting from the use of the information contained in this publication.

3. Hardware Overview

3.1. Tool Description



ITEM	Description
1.	OBD II CONNECTOR Connects the tool to the vehicle's Data Link connector (DLC).
2.	USB CONNECTOR Connects the tool to the PC/Laptop through USB Cable.

3.2. Specifications

ITEM	Description		
Operating Temperature	-20 to 70 °C (-4 to 158 °F)		
Storage Temperature	-40 to 85 °C (-40 to 185 °F)		
Diagnostic Interface	16 PIN		
USB Interface	USB 2.0		
Power	DC 5 V - 12 V		
Consumption	1 W		
Dimensions	Length 95 mm(3.74")	Width 49 mm(1.93")	Height 28 mm(1.10")
Net Weight	80g		
Gross Weight	212 g		

3.3. System Requirements

PC/Laptop Minimum Specification

	Minimum Specification	Recommended Specification
CPU	Pentium 3/1GHz or above	Pentium 4/1.6GHz or above
Memory(RAM)	512M or above	1G or above
HDD	40G or above	60G or above
Display	800 x 600 or above	1024 x 768 or above
OS	Win98/2000/XP/Vista	WinXP
Port	USB	USB

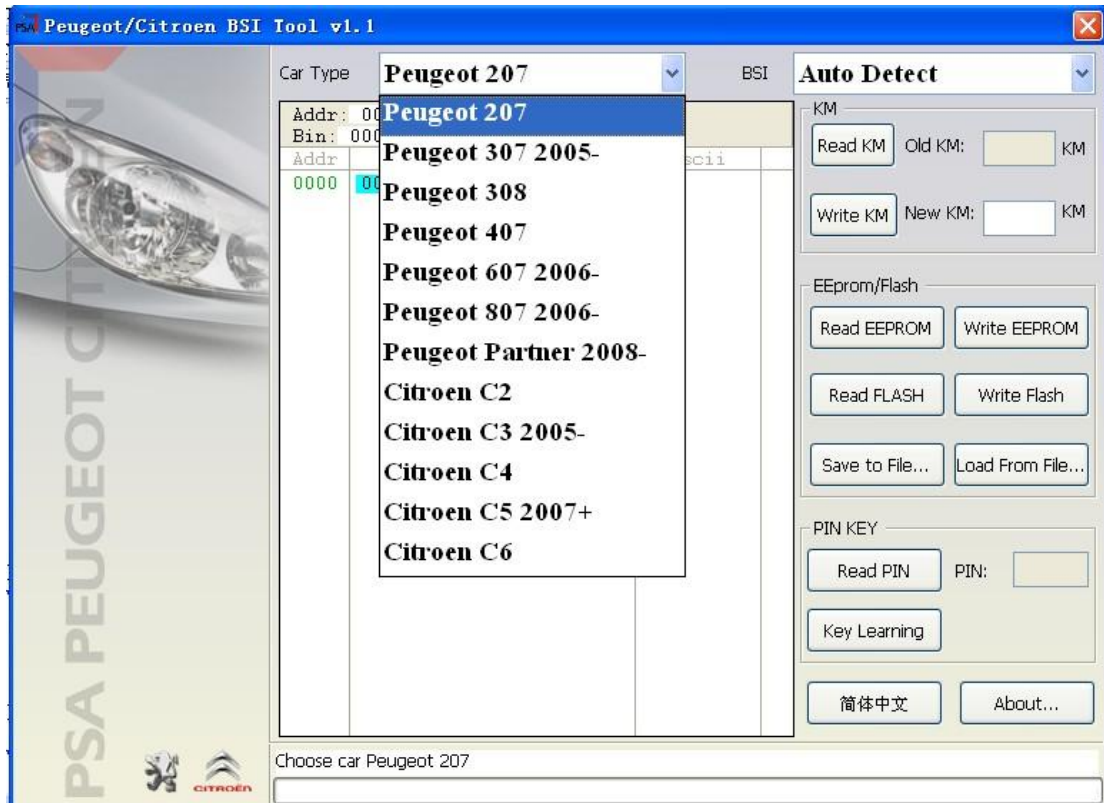
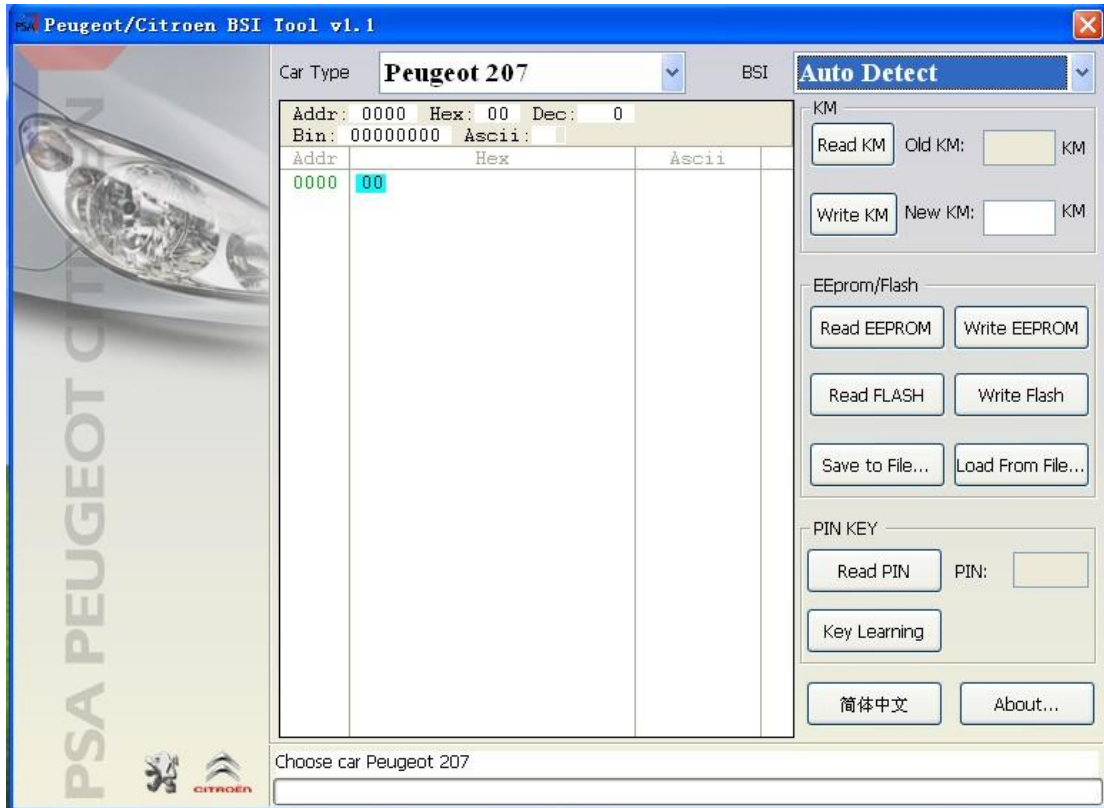
4. Software Overview

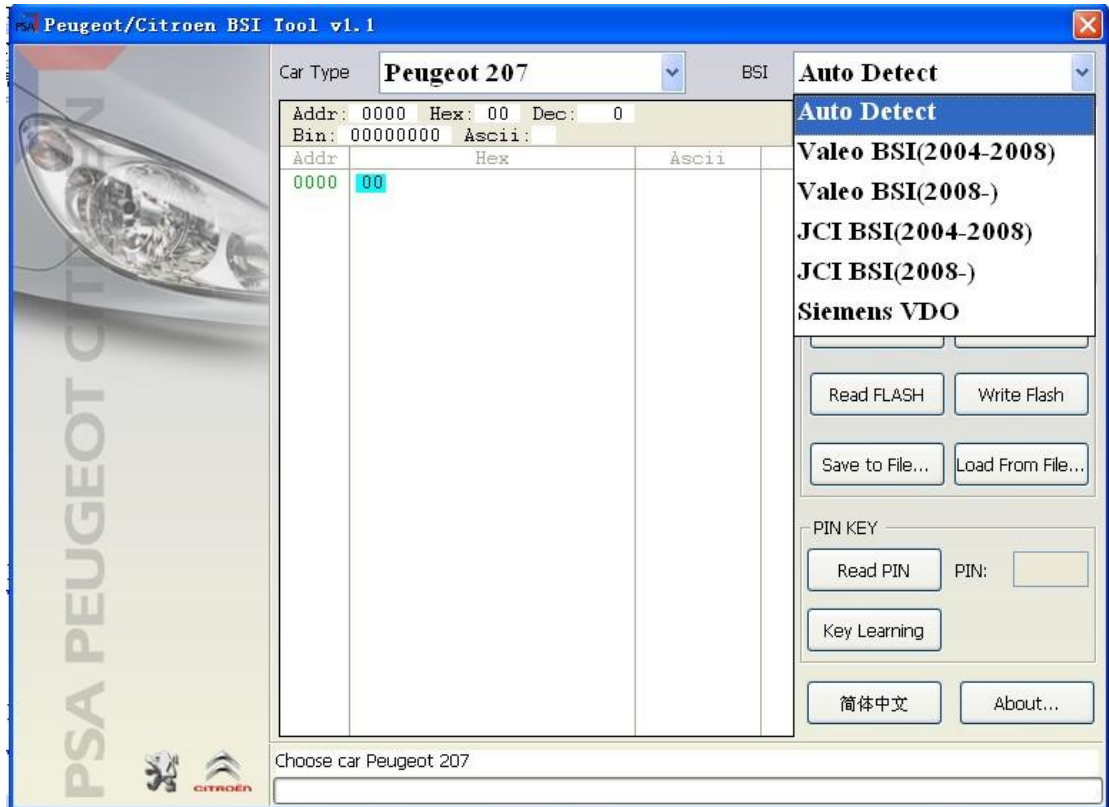
“PSA BSI Tool” Include hardware device and software, also user manual. You must connect hardware to PC before run the software.

1. Read/Write KM stored in BSI
2. Read PIN code stored in BSI and use it to learn key
3. Read BSI Flash
4. Write BSI Flash produced by Johnson Controls
5. Read/Write BSI EEPROM produced by Siemens VDO
6. Support Simplified Chinese and English.

4.1. Function

Main window follows:

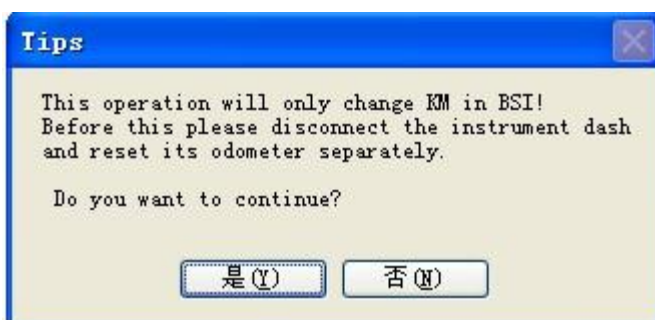
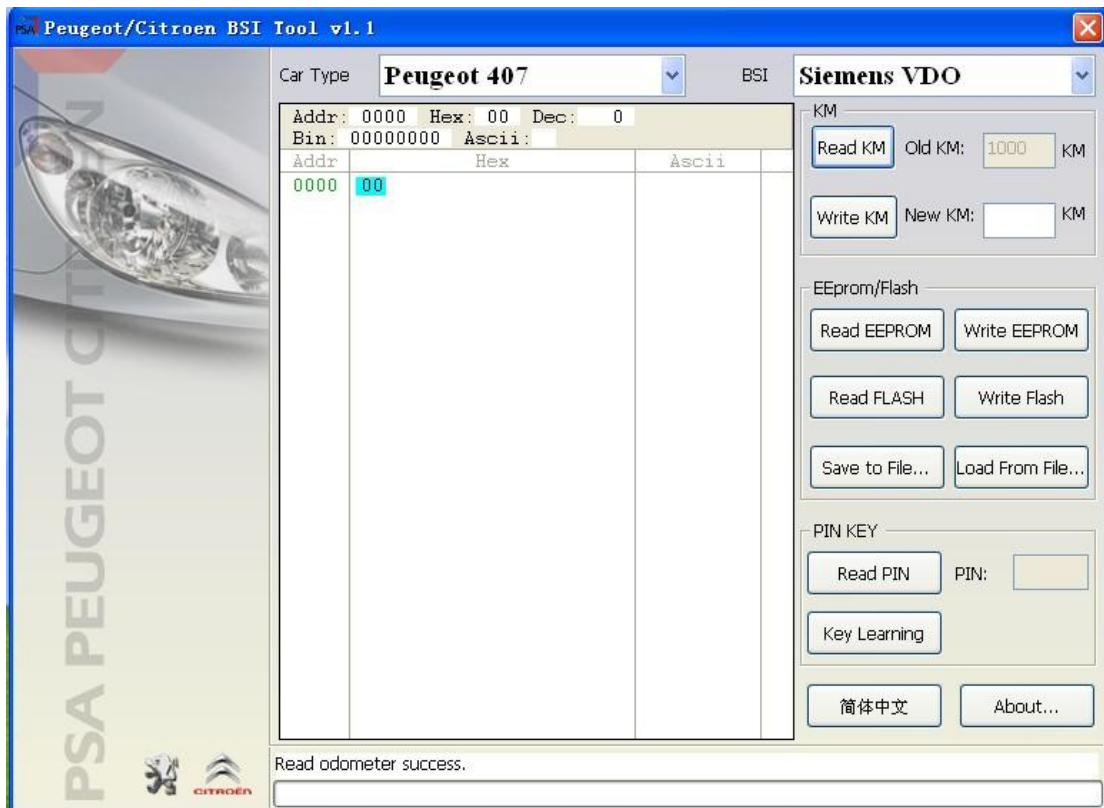


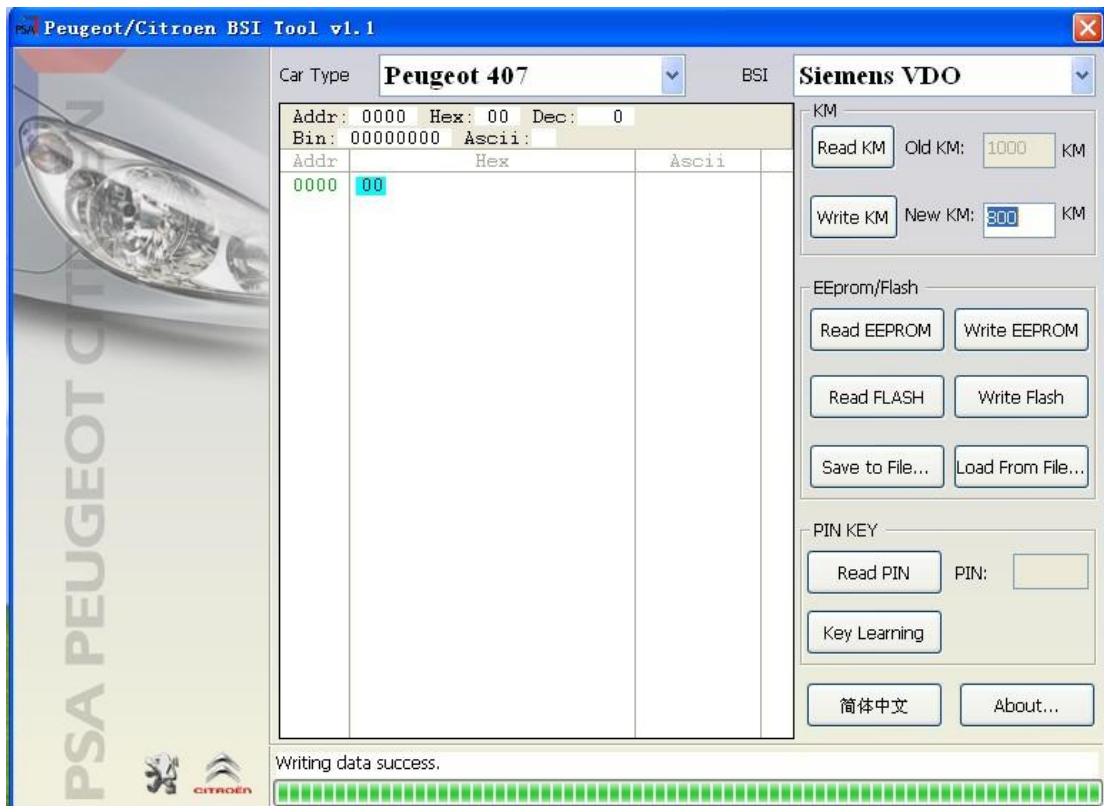
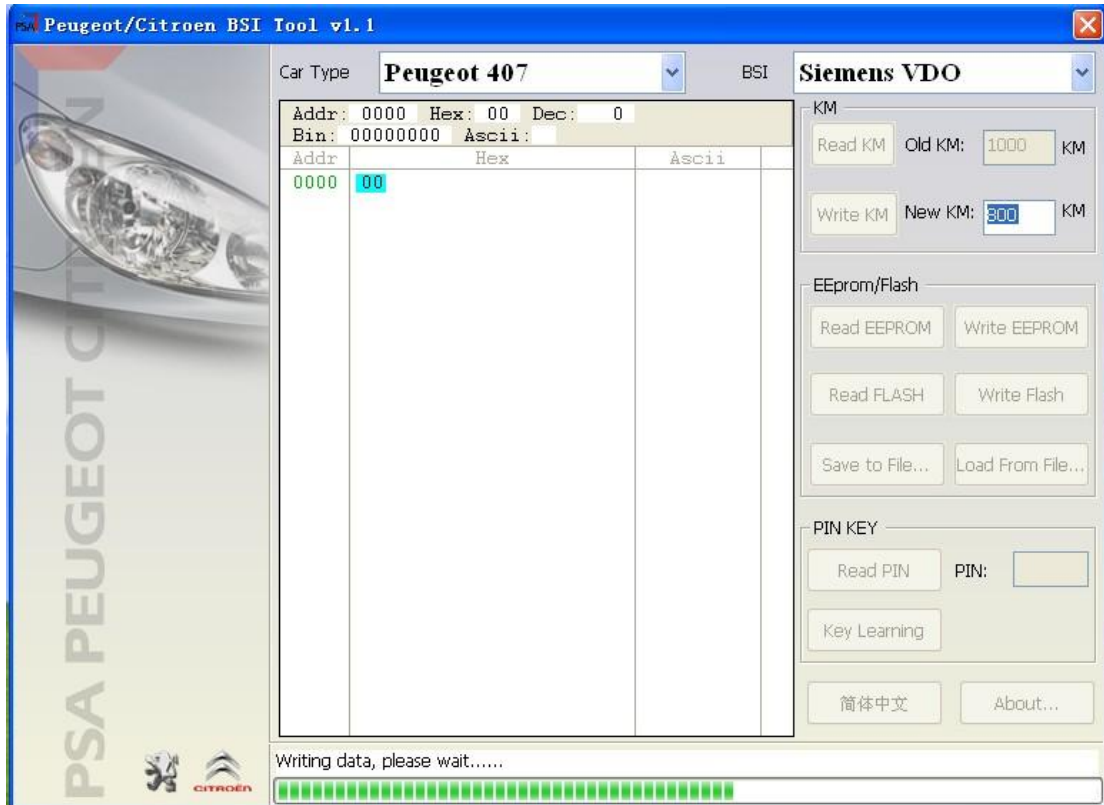


i. KM Function

1. Read KM: Can read KM stored in BSI.
2. Write KM: Can write KM stored in BSI.

Following is some information while read/write KM.



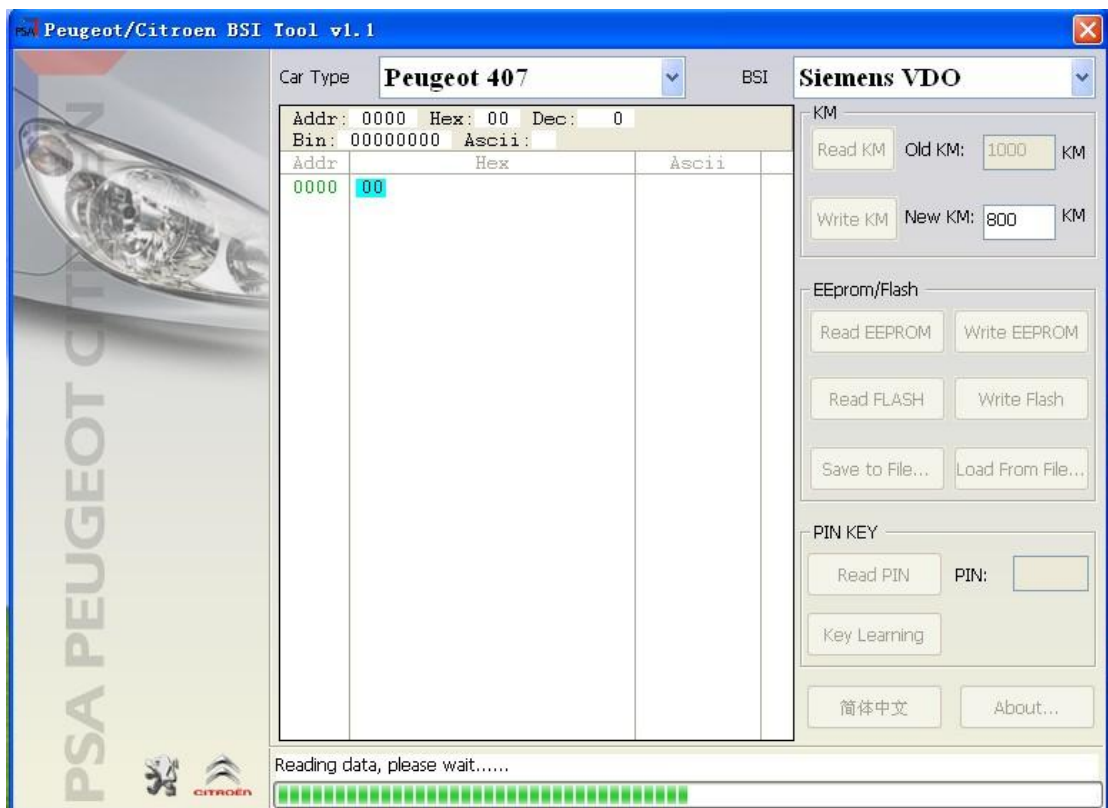


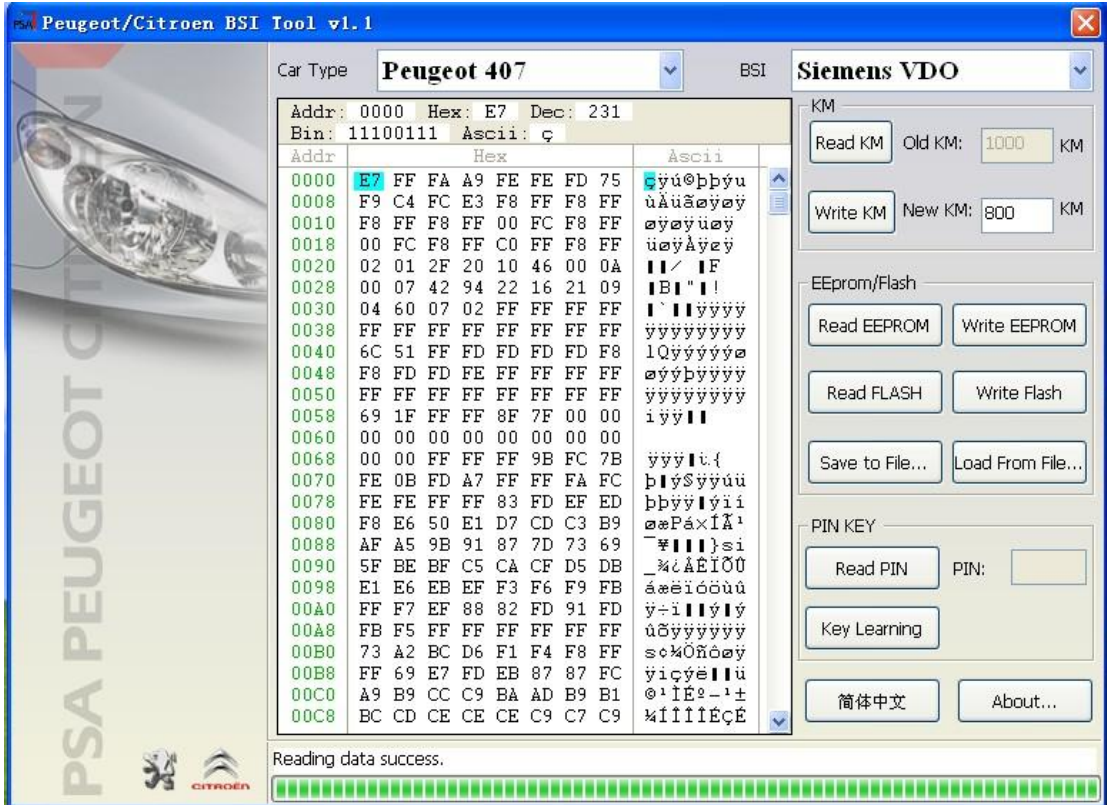
ii. EEPROM/FLASH Function:

Includes Read/Write EEPROM, Read/Write Flash, Save File, Load File..

1. Read EEPROM: Only support read BSI produced by Siemens VDO.
2. Write EEPROM: Only support write BSI produced by Siemens VDO.
3. Read FLASH: Support all BSI type, support to backup flash before other operation.
4. Write FLASH: Only support Write BSI produced by Johnson Controls. The write data must be read with this tool.
5. Save To File: Save the read data to a file.
6. Load From File...: Load the saved file, prepare for written operation.

Following is part information in EEPROM/FLASH function.

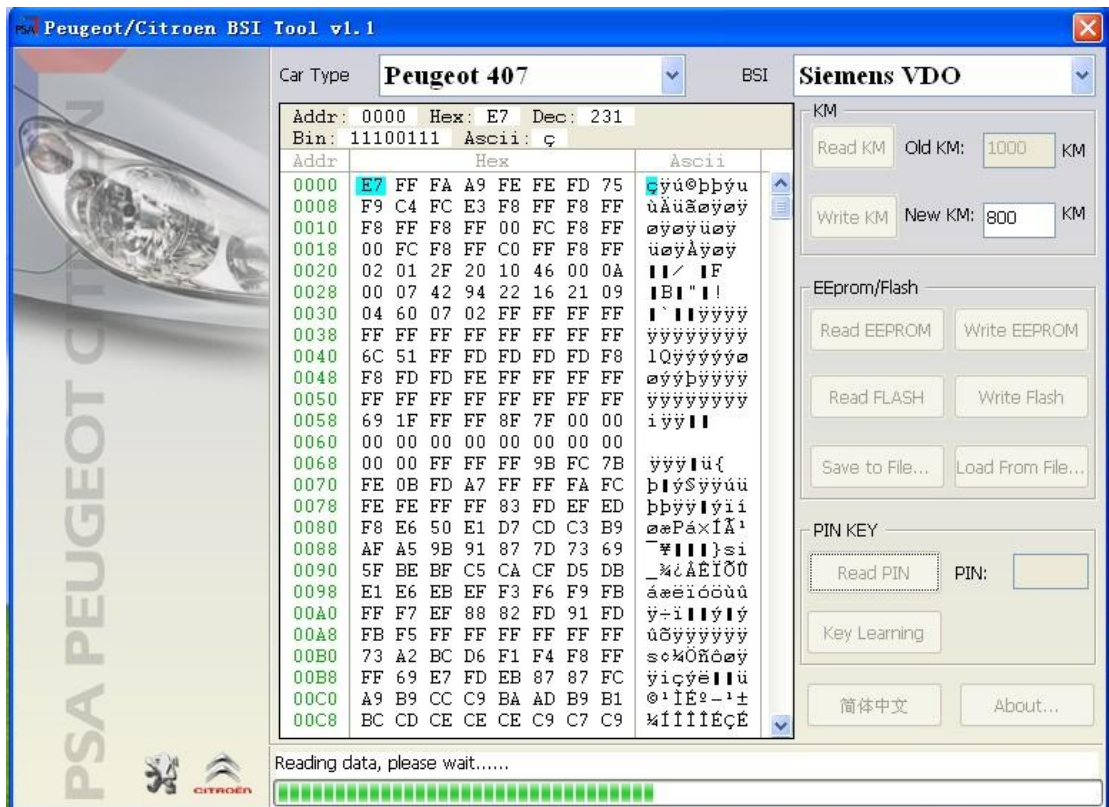




iii. **PIN KEY Function**

Support Read PIN code stored in BSI, with this code you can run Key Learning function.

1. Read PIN: Read PIN stored in BSI.
2. Key Learning: You can go to Key Learning after you get the PIN code. It will enter into another window. Includes "Get Immo Status" and "Key Learning" .
 - a. Get Immo Status: You can get the key status for the current car.
 - b. Key Learning: You can add new key to car.



PSA Peugeot/Citroen BSI Tool v1.1

Car Type: **Peugeot 407** BSI: **Siemens VDO**

Addr: 0000 Hex: E7 Dec: 231
Bin: 11100111 Ascii: ç

Addr	Hex	Ascii
0000	E7 FF FA A9 FE FE FD 75	çú@bbÿu
0008	F9 C4 FC E3 F8 FF F8 FF	ùÀüæÿÿÿ
0010	F8 FF F8 FF 00 FC F8 FF	ÿÿÿÿÿÿÿ
0018	00 FC F8 FF C0 FF F8 FF	ÿÿÿÿÿÿÿ
0020	02 01 2F 20 10 46 00 0A	!!/!F
0028	00 07 42 94 22 16 21 09	!B!!!
0030	04 60 07 02 FF FF FF FF	! !ÿÿÿÿÿÿ
0038	FF FF FF FF FF FF FF FF	ÿÿÿÿÿÿÿÿ
0040	6C 51 FF FD FD FD FD F8	lQÿÿÿÿÿÿ
0048	F8 FD FD FE FF FF FF FF	ÿÿÿÿÿÿÿÿ
0050	FF FF FF FF FF FF FF FF	ÿÿÿÿÿÿÿÿ
0058	69 1F FF FF 8F 7F 00 00	iÿÿ!!
0060	00 00 00 00 00 00 00 00	
0068	00 00 FF FF FF 9B FC 7B	ÿÿÿ!ü{
0070	FE 0B FD A7 FF FF FA FC	blÿ\$ÿÿÿüü
0078	FE FE FF FF 83 FD EF ED	bbÿÿ!ÿÿii
0080	F8 E6 50 E1 D7 CD C3 B9	æPá×!Ä'
0088	AF A5 9B 91 87 7D 73 69	~*!!!ÿ}si
0090	5F BE BF C5 CA CF D5 DB	_%iÄÉ!Û
0098	E1 E6 EB EF F3 F6 F9 FB	ææiöóüü
00A0	FF F7 EF 88 82 FD 91 FD	ÿ-i!!!ÿ!ÿ
00A8	FB F5 FF FF FF FF FF FF	ûðÿÿÿÿÿÿÿÿ
00B0	73 A2 BC D6 F1 F4 F8 FF	sch0ñöæÿ
00B8	FF 69 E7 FD EB 87 87 FC	ÿicÿÿÿ!!!ü
00C0	A9 B9 CC C9 BA AD B9 B1	ø!iÉø-!±
00C8	BC CD CE CE C9 C7 C9	¼!!!!iÉçÉ

Read PIN success.

Right Panel: **Siemens VDO**

KM: Read KM Old KM: 1000 KM Write KM New KM: 300 KM

EEPROM/Flash: Read EEPROM Write EEPROM Read FLASH Write Flash Save to File... Load From File...

PIN KEY: Read PIN PIN: 6X16 Key Learning

简体中文 About...

Key Learning

Immo Status

Key1 Used Key2 Used

Key3 No use Key4 No use

Key5 No use

Key Learn Number: Get Immo Status

PIN (Login) code: Key Learning

Key Learning

Immo Status

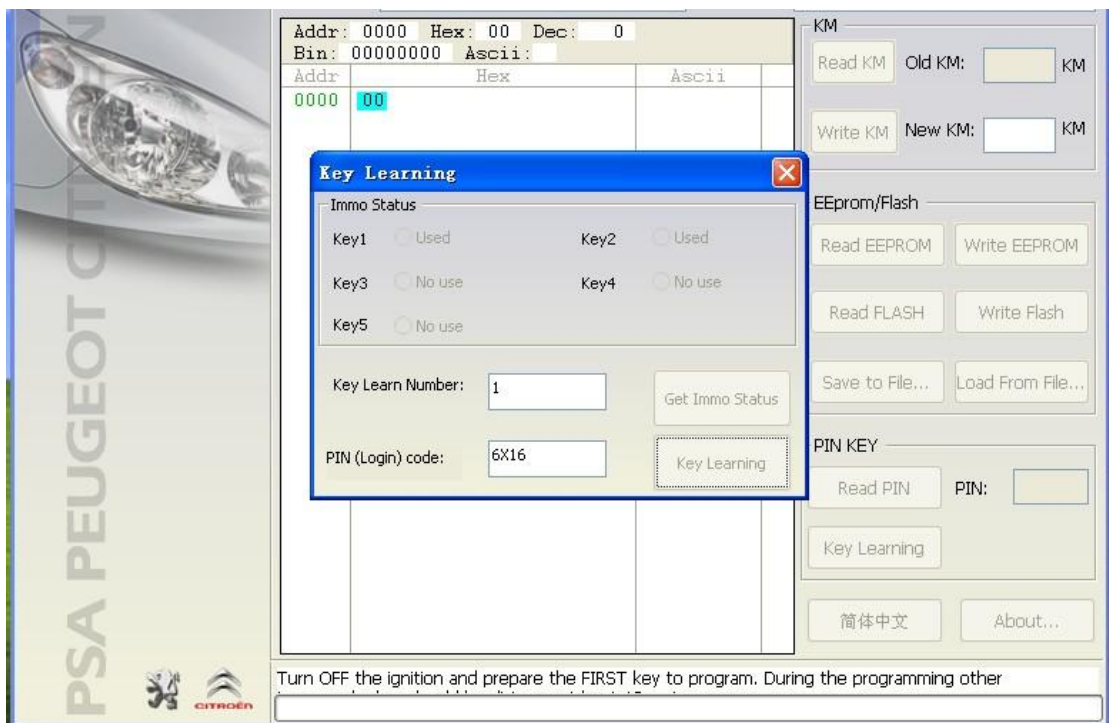
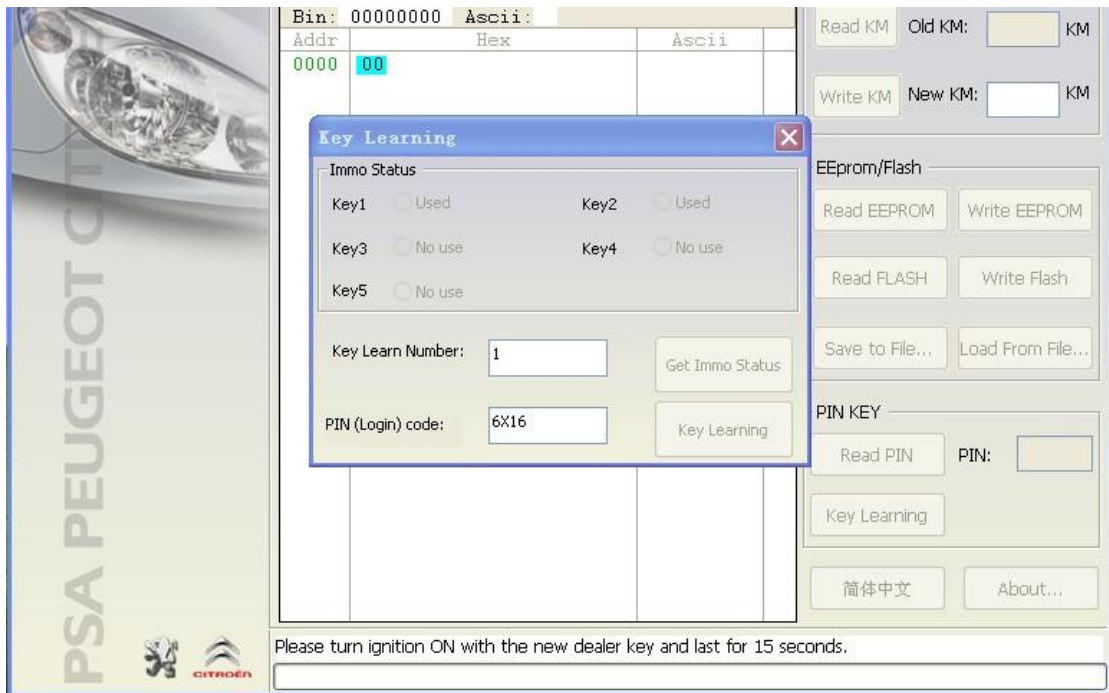
Key1 No use Key2 No use

Key3 No use Key4 No use

Key5 No use

Key Learn Number: Get Immo Status

PIN (Login) code: Key Learning



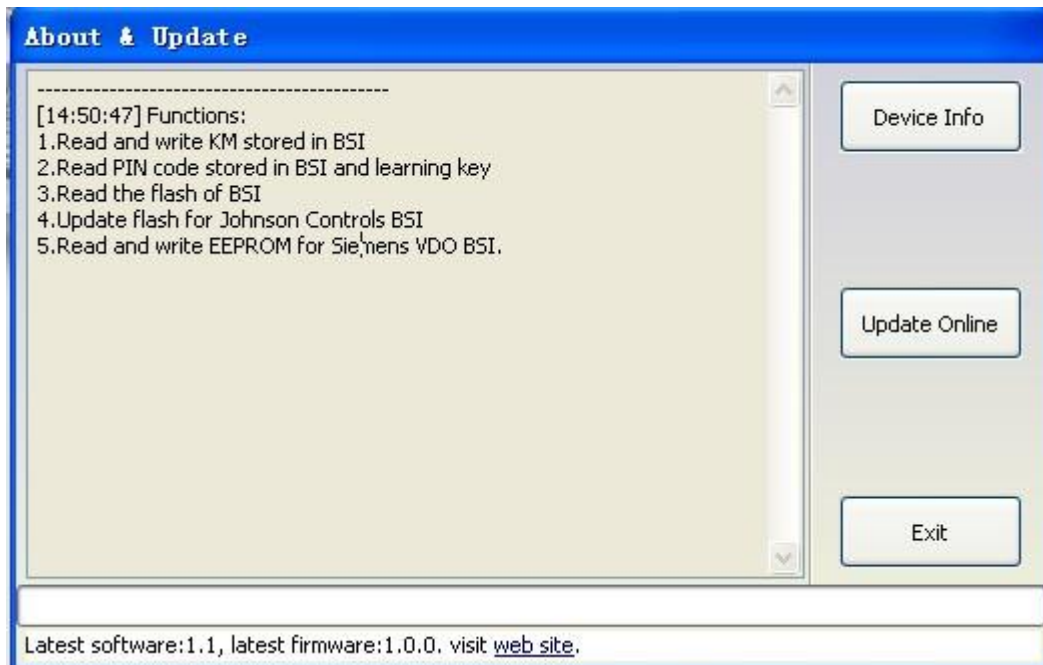
iv. Language

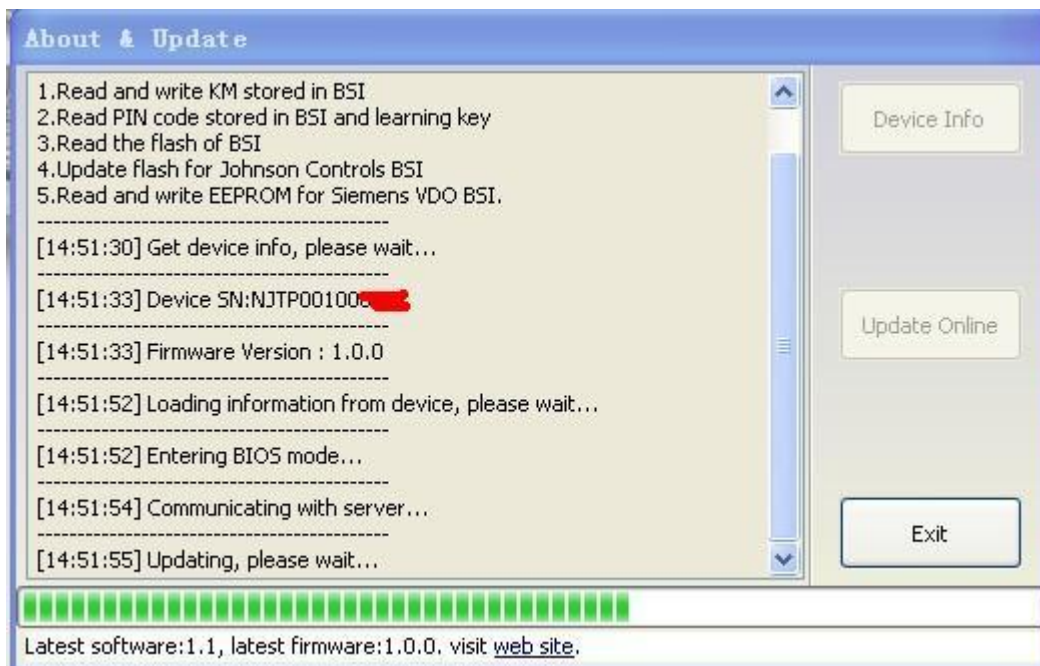
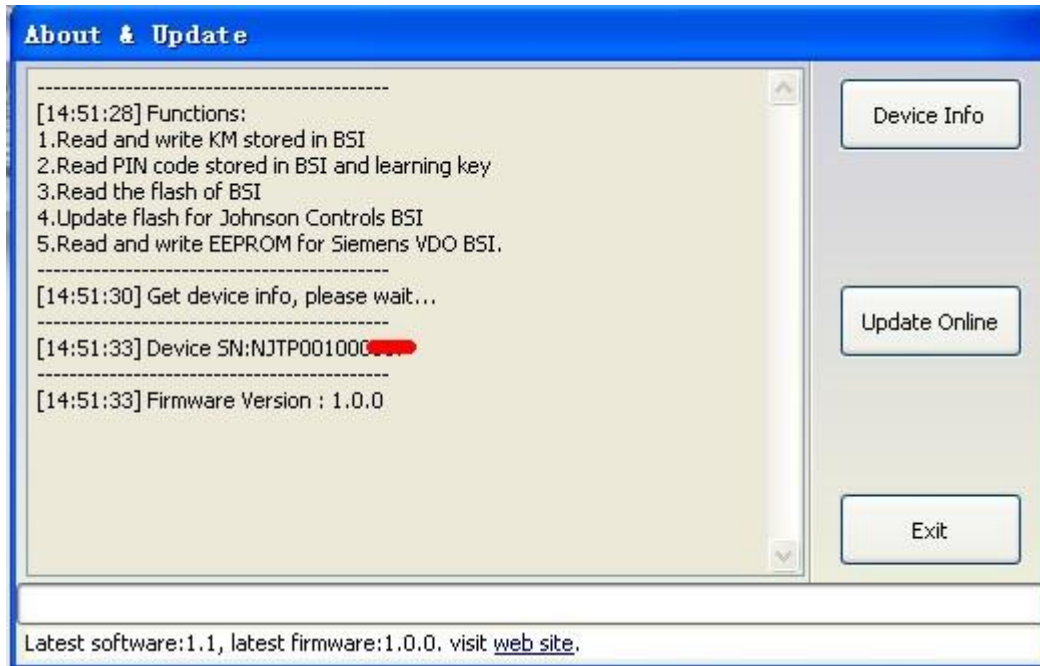
You can change the current language with the Language button. Now we support simplified Chinese and English.

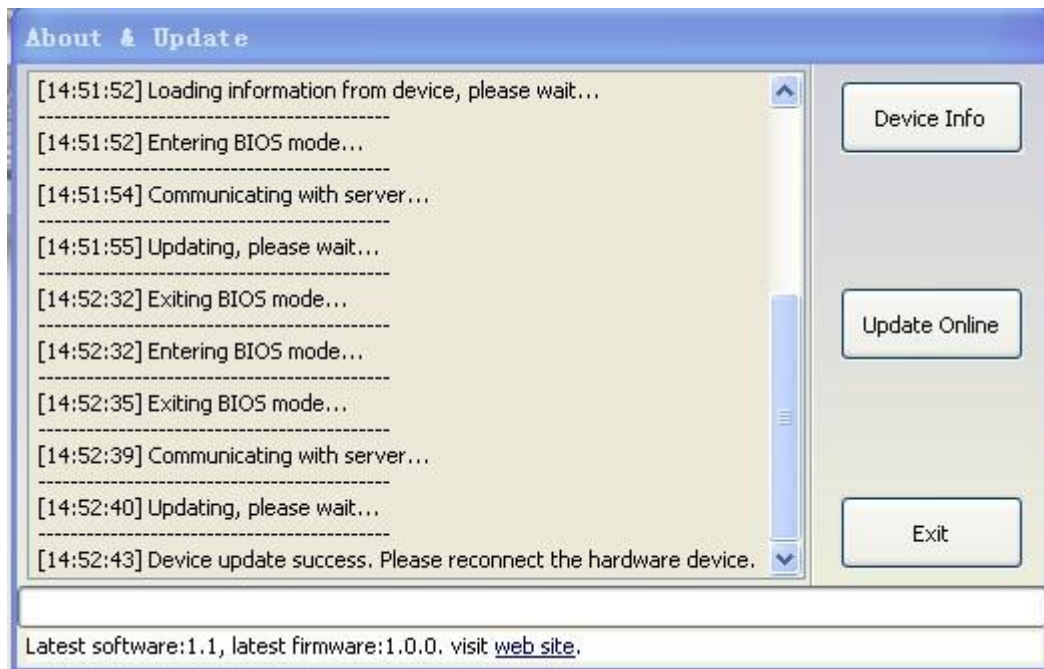
v. About

You can find software function introduction here. Get the hardware device SN and firmware version, update your firmware online. (In the bottom you we find the newest software and firmware version, need internet support)

1. Device Info: You can get the device SN and firmware version after you connect device to PC.
2. Update Online: Update your device firmware online.







5. Troubleshooting

5.1. “Device not connected” Error



Information: Hardware not connected to PC with USB port.

Solution: Plug device to USB.

6. Warranty and Service

6.1. Limited One Year Warranty

We warrants to its customers that this product will be free from all defects in materials and workmanship for a period of one(1) year from the date of the original purchase, subject to the following terms and conditions:

- This warranty does not apply to damages caused by improper use, accident, flood, lightning, or if the product was altered or repaired by anyone other than the Manufacturer's Service Center.
- We shall not be liable for any incidental or consequential damages arising from the use, misuse, or mounting of the tool. Some states do not allow limitations on how long an implied warranty lasts, so the above limitations may not apply to you.
- All information in this manual is based on the latest information available at the time of publication and no warranty can be made for its accuracy or completeness. We reserves the right to make changes at any time without notice.