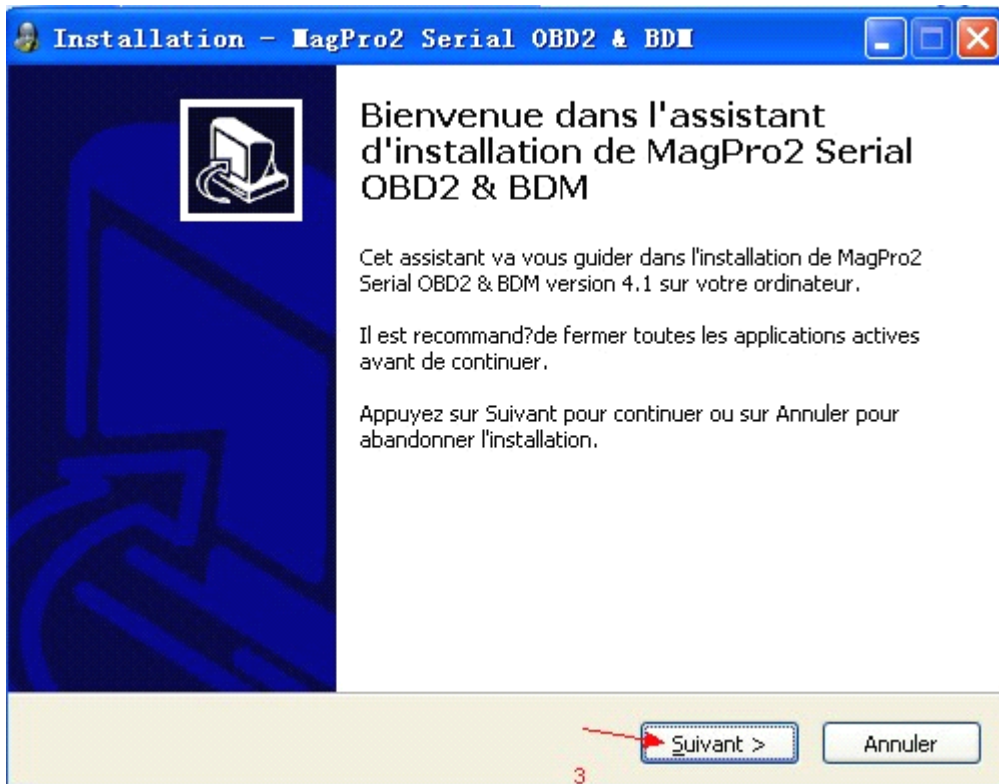
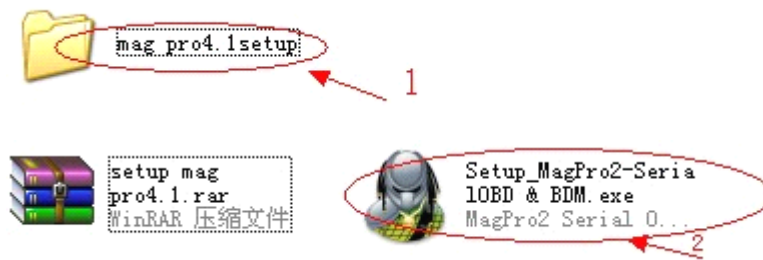
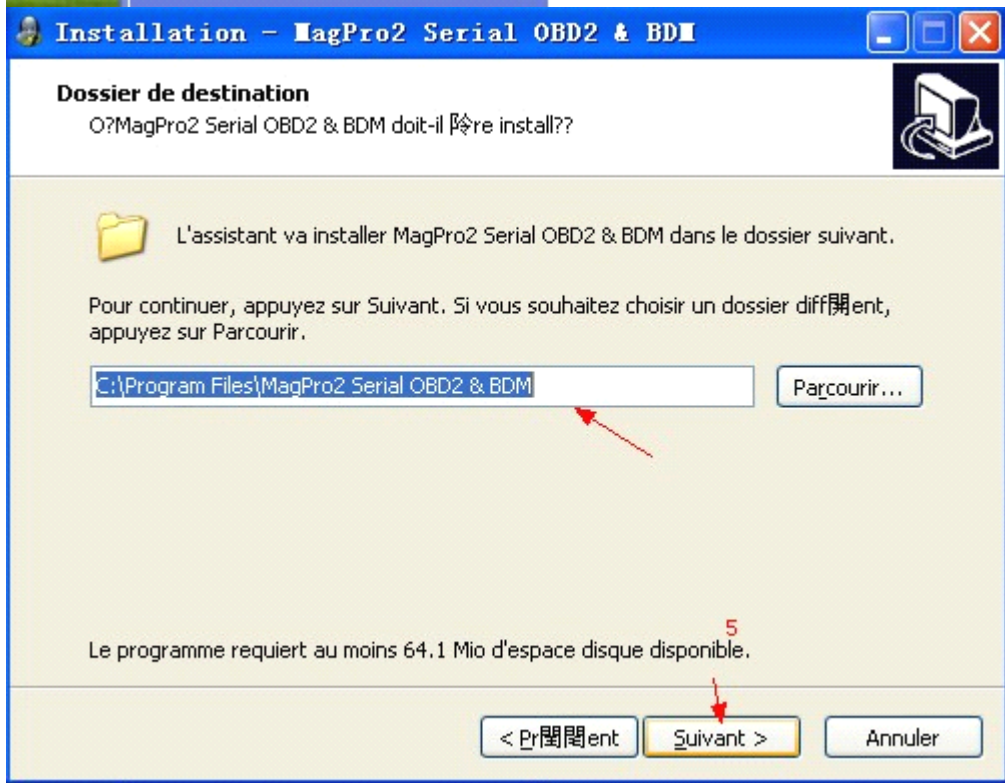
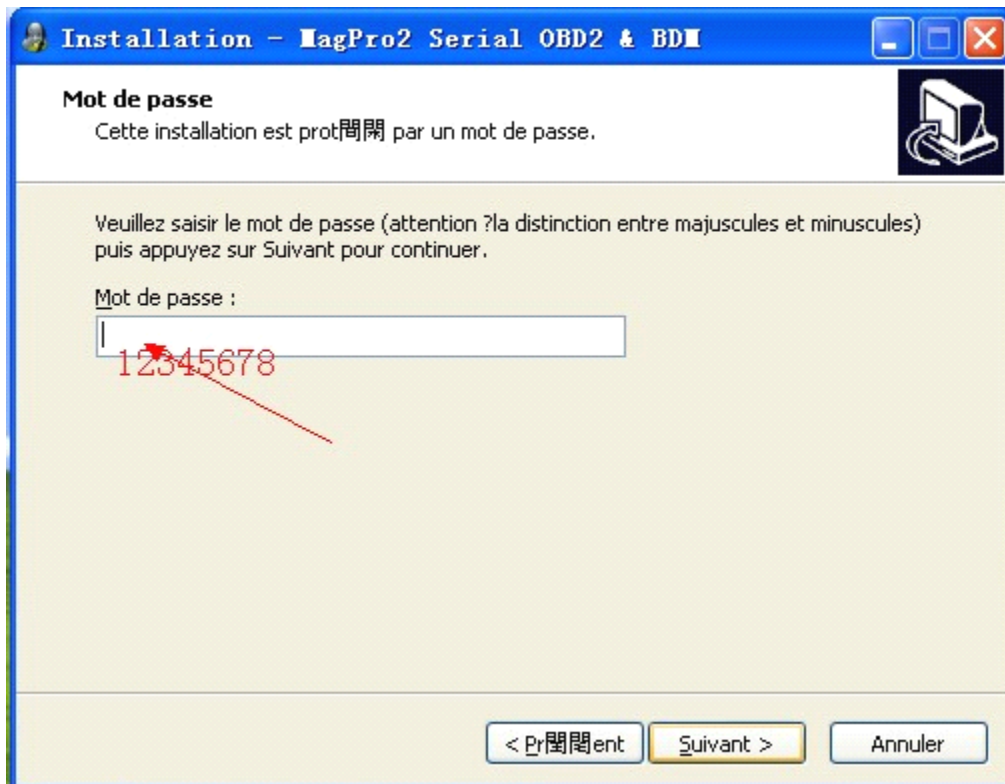
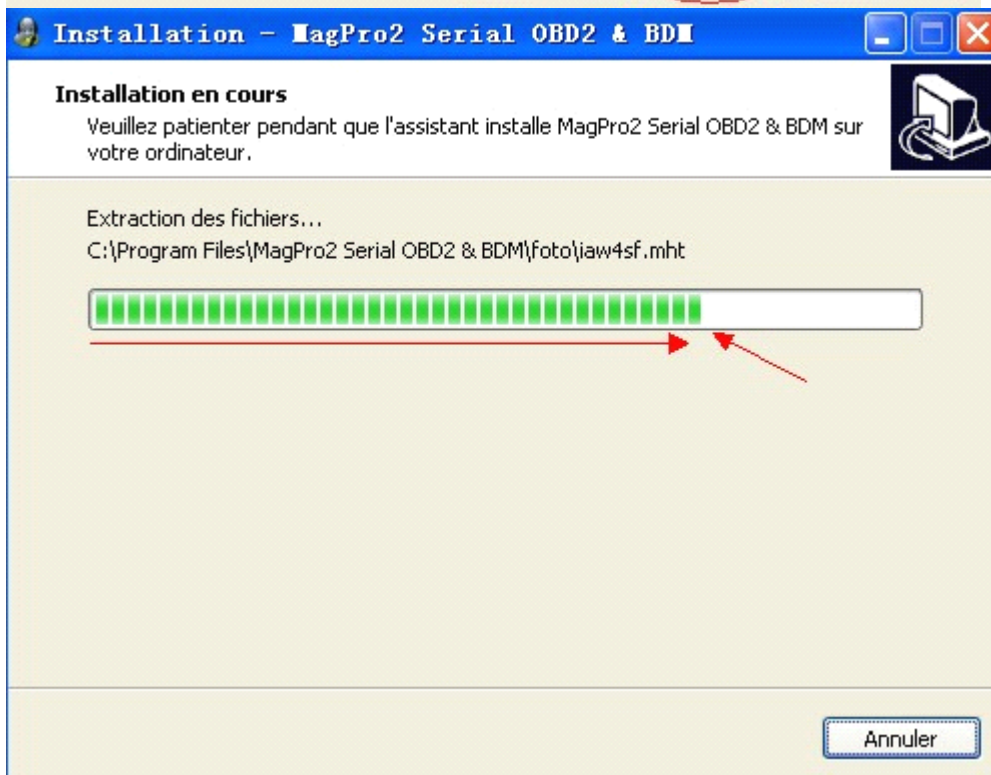
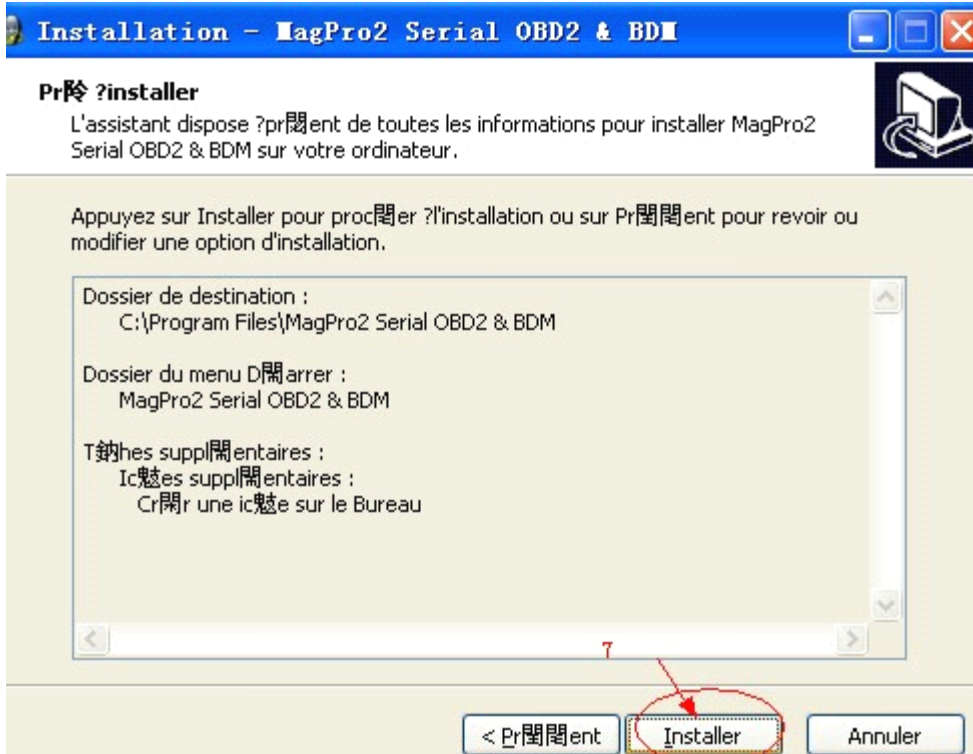
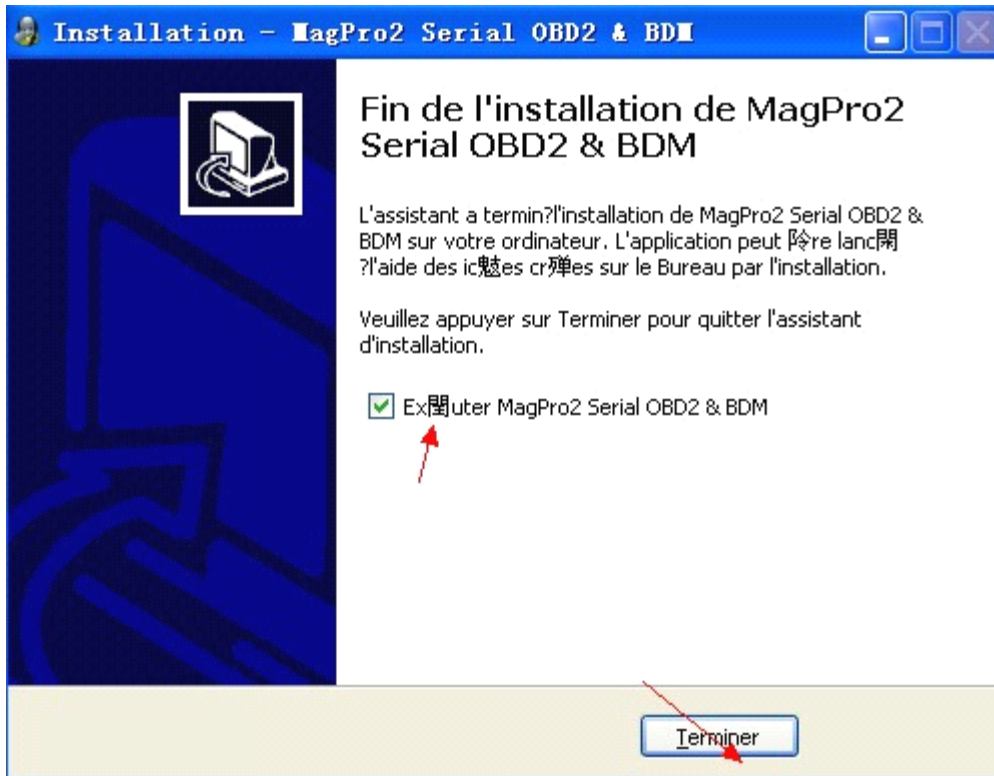


Installer le logiciel









installation du logiciel ok

Le logiciel a besoin de s'inscrire [nous fournissez HWID]



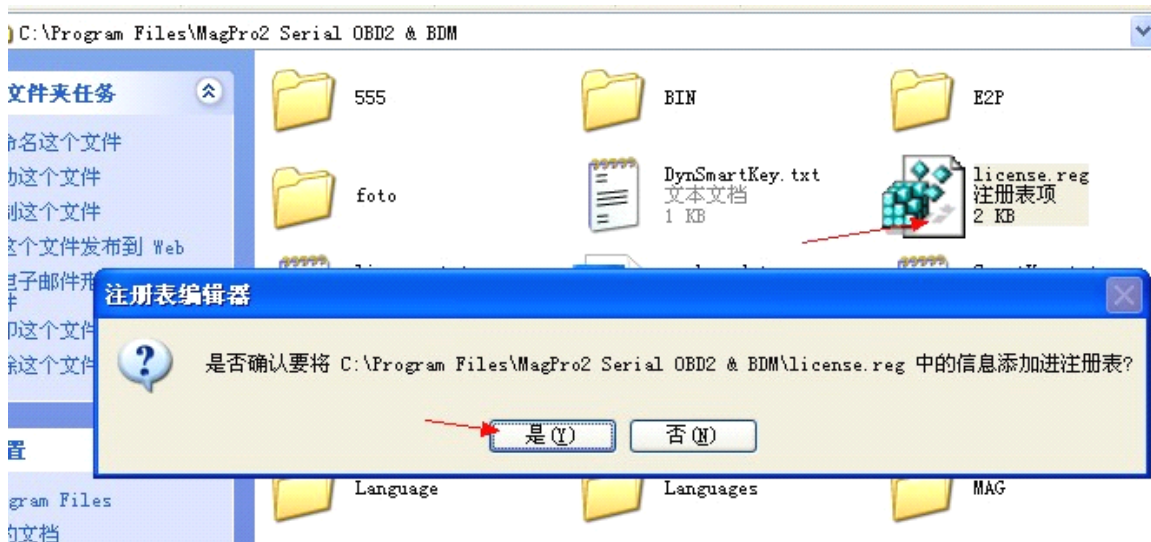
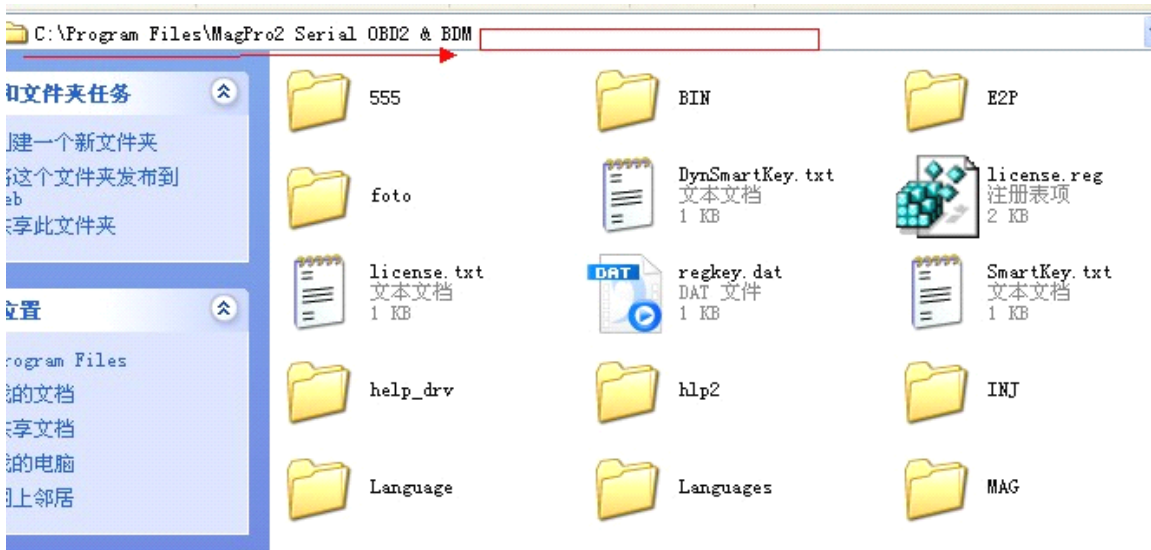
Logiciel d'enregistrement calculé
[nous vous donnons]



ouvrir le logiciel d'enregistrement, et copier tous les fichiers

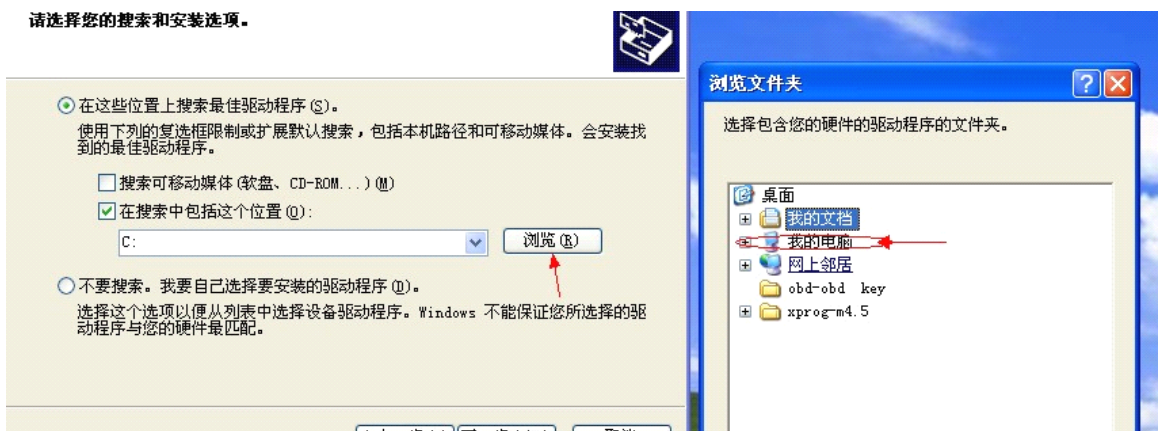
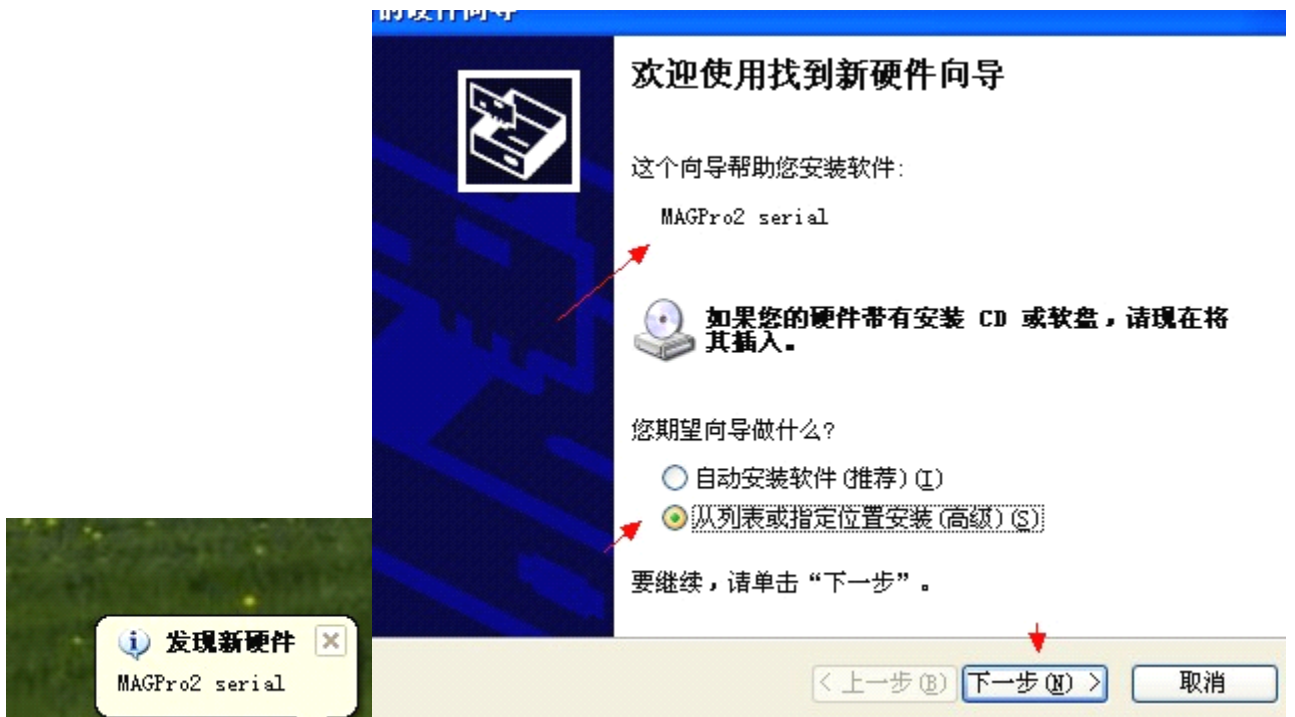


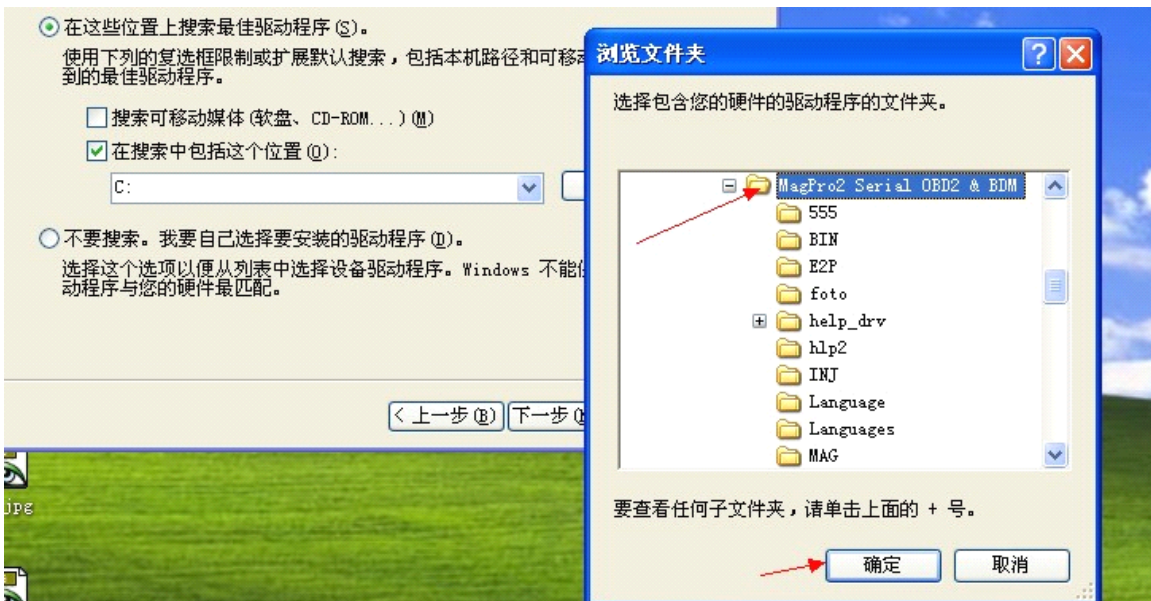
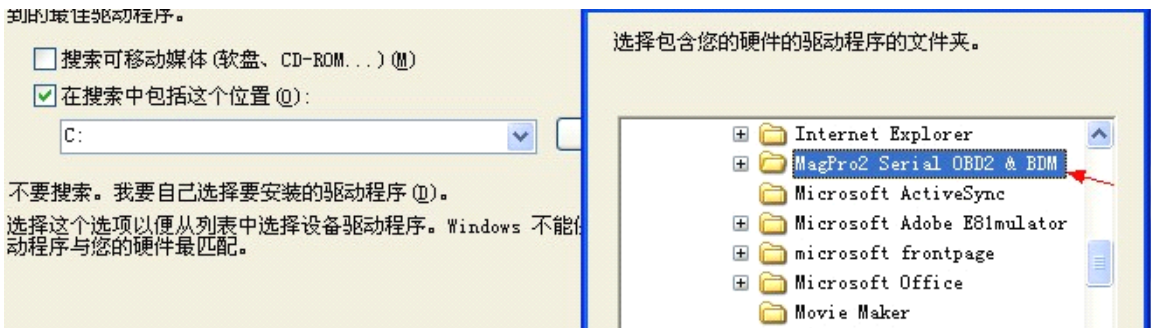
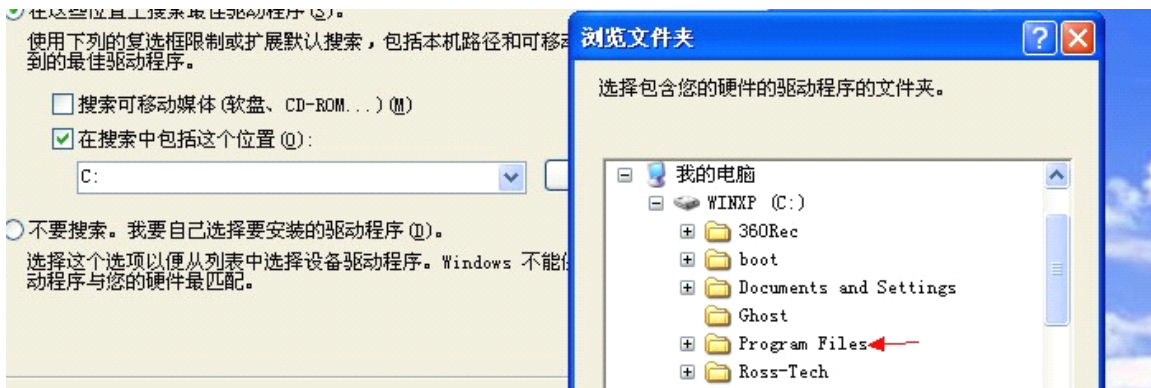
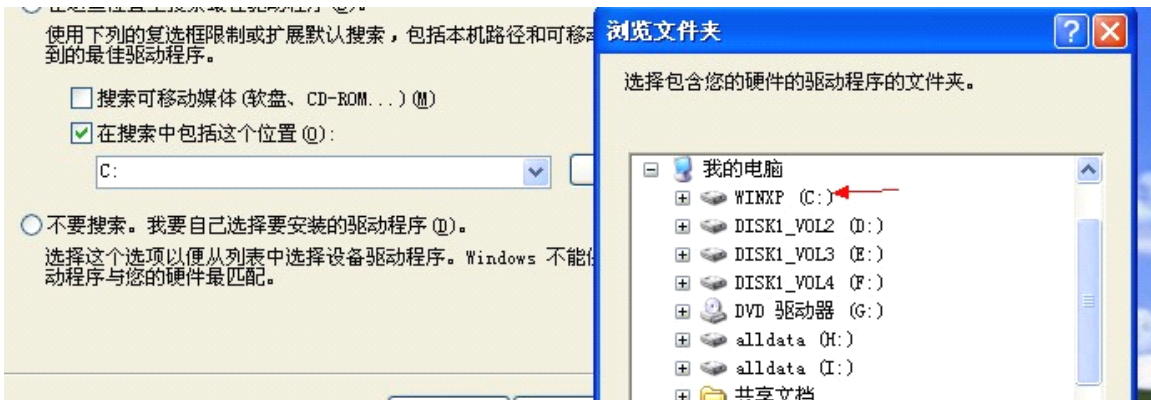
coller tous les fichiers dans le dossier ci dessous, et lancer licence





Installer le pilote







在这些位置上搜索最佳驱动程序 (S)。

使用下列的复选框限制或扩展默认搜索，包括本机路径和可移动媒体。会安装找到的最佳驱动程序。

搜索可移动媒体 (软盘、CD-ROM...) (M)

在搜索中包括这个位置 (Q)：

C:\Program Files\MagPro2 Serial OBD2 & BDM

浏览 (R)

不要搜索。我要自己选择要安装的驱动程序 (I)。

选择这个选项以便从列表中选择设备驱动程序。Windows 不能保证您所选择的驱动程序与您的硬件最匹配。

< 上一步 (B)

下一步 (N) >

取消



MAGPro2 serial



正在设置系统还原点并备份旧文件，以防将来需要还原系统。

< 上一步 (B)


下一步 (N) >

取消

找到新的硬件向导

完成找到新硬件向导

该向导已经完成了下列设备的软件安装:

 MAGPro2 serial

要关闭向导，请单击“完成”。

Terminer

< 上一步(B) **完成** 取消



MagPro2 - Ver: 4.1

Make	Model	Selection
ABARTH	A3 2000 TDI 140CV	Family: 38 Disp: 141
ALFA	A3 2000 TDI 140CV	VAG ME7.5 29F400 E2
AUDI	A3 2000 TDI 170CV	Available
BMW	A3 3200 V6 250CV	Checksum Auto = NOT
BOOTLOADER	A3 3200 V6 250CV	
CADILAC	A4 1800 20V 125CV	
CHEVROLET	A4 1800 20V 125CV	
CHRYSLER	A4 1800 20V TURBO 150CV	Hints
CITROEN	A4 1800 20V TURBO 150CV	OBD II
DACIA		29F400 PSOP
DAEWOO		WRITE ONLY
DODGE		
DUCATI		
FERRARI		
	Ecu	
	BOSCH ME7.5	

Info: File Name, File Length, Mode: USB, Language: English

Speed: Slow Fast Medium Max

Options: Only Data All

Progress Information: Model: A4 1800 20V TURBO 150CV

MAGPRO²
SERIAL CHIPTUNING SYSTEM

