

# JDiag™

## ELITE

### Software Quick Start Guide



JDiag Technology Inc. 2016 March Revision

JDiag Elite has been carefully designed and tested to comply with OBDII protocols, which are used on most 1996 and newer cars and light trucks sold in the USA. However, some vehicle models are not in full compliance with these protocols for various reasons. In addition, the computer control systems or sensors on any given vehicle may be malfunctioning or out of specification.

Note: Vehicles manufactured for use outside of the USA may not comply with OBDII protocols, even though an SAE J1962 connector is located in the vehicle. Connection to vehicles manufactured for use outside of the USA is AT YOUR OWN RISK. JDiag Technologies will not be held responsible for ANY direct, indirect or consequential damage that arises as a result of connecting to such a vehicle.

Before using JDiag Elite, we recommend visiting this website for service information: [www.nastf.org](http://www.nastf.org).

While JDiag Technologies testing and the experience of thousands of JDiag Elite users have shown the interface to be safe and reliable, there is an inherent risk in using any product that may potentially affect the operation or drive-ability of your vehicle. JDiag Technologies will not be held responsible for ANY direct, indirect or consequential damage that arises as a result of using JDiag Elite on a vehicle.

If you are concerned about the operation of your vehicle at any time while using JDiag Elite:

- If you are driving, pull off the roadway immediately or as soon as it is safe to do so.
- Disconnect JDiag Elite from the OBDII port.
- Consult a licensed mechanic or automobile service center.

Report any issues or concerns to our Technical Support Dept. at [support@jdiag.com](mailto:support@jdiag.com).

We are open Monday through Friday, 9:00 a.m. to 5:30 p.m. Eastern Time. We maintain an active database of the feedback we receive, and your comments can help us continuously improve the product.

## **Content**

Contents.....	4
Introduction .....	5
Getting to Know JDiag Elite .....	5
Input the security boot password.....	6
Choose the OS software you need.....	7
Operation System 1.....	8
Software included.....	8
Operation System 2 .....	9
Operation System 3.....	10
Tech Support.....	11
Troubleshooting and Support .....	12

# Introduction

## Getting to start the software

After open the JDiag box, you will find there are 2 boxes inside, one is JDiag laptop another is JDiag tool box.

Take the laptop out of the box and make it charged (Usually we will make the laptop battery run out before shipping), then start the laptop by pressing the power on button <pic.1>.



<Pic.1>

## Input the security boot password

Once you power on the laptop, it will shows you the welcome screen, the JDiag software with security page protected, user must input the password before enter the system. Please notice that, here the password is: **jdiag**

Then press enter in the keyboard the load the OS. <pic.2>

*\*The password **jdiag** is in normal letters, not CAP letter.*

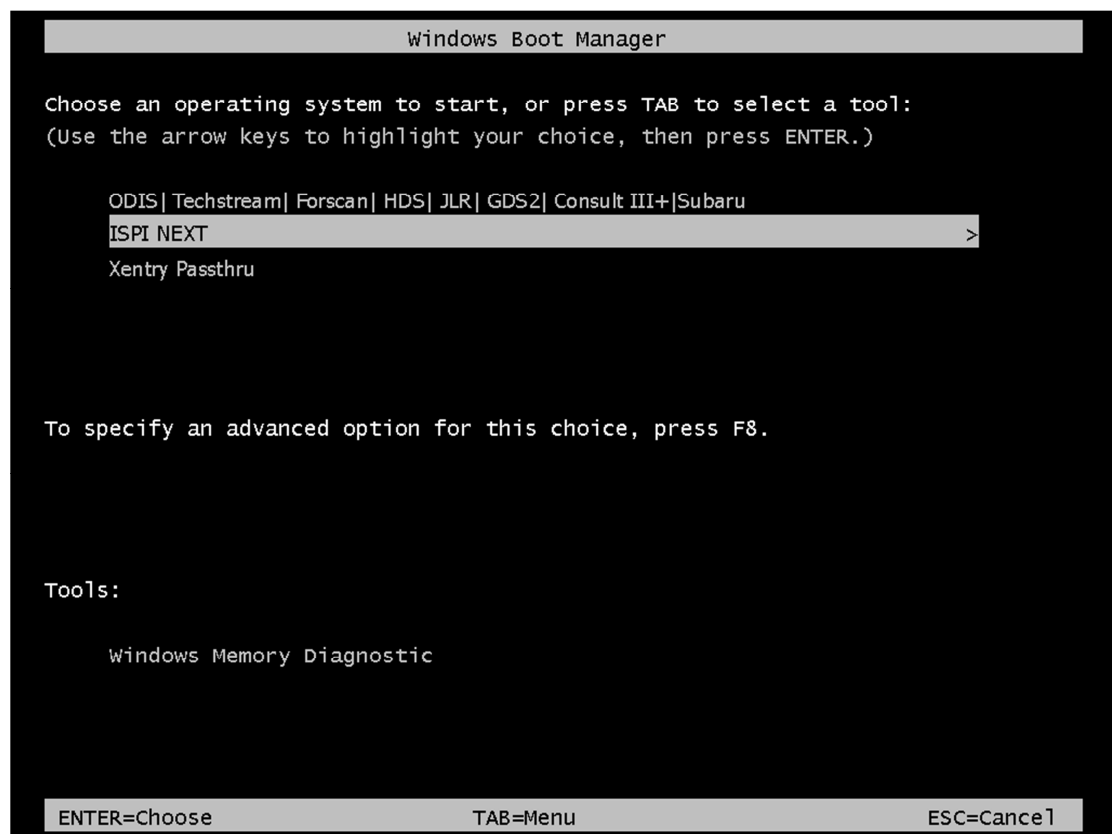


<pic.2>

## Choose the OS software you need

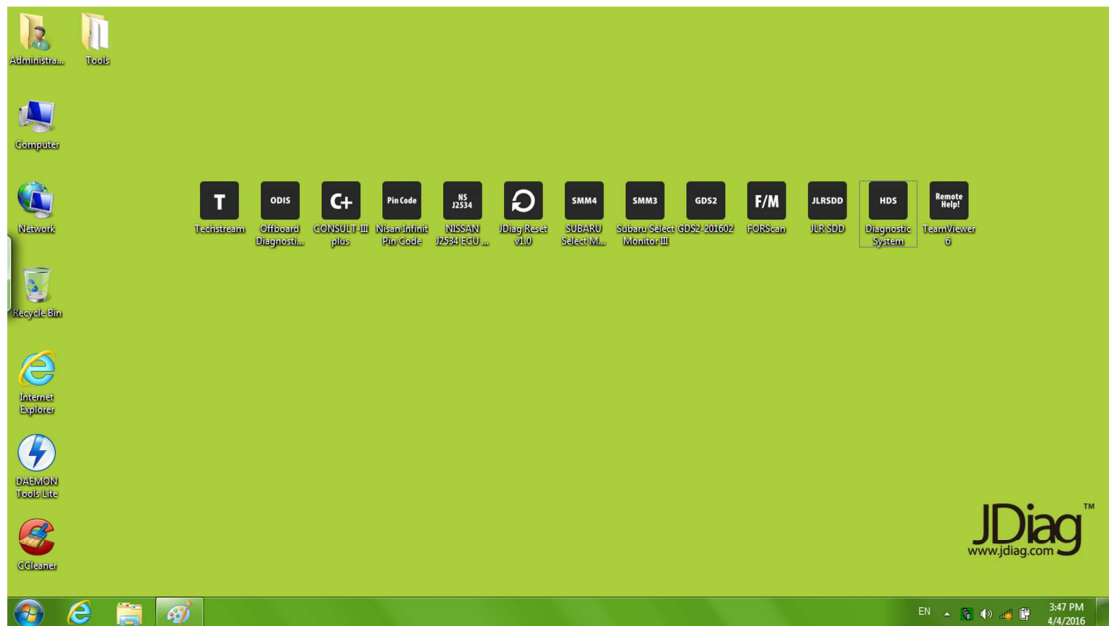
Here we come to the software OS choose screen; there are total 3 operation systems inside JDiag laptop, each one for different brands, choose anyone you want to work with: <pic.3>

1. ODIS | Techstream | Forscan | HDS | JLR | GDS2 | Consult III+ | Subaru
2. ISPI NEXT
3. Xentry Passthru



<pic.3>

# Operation System 1.

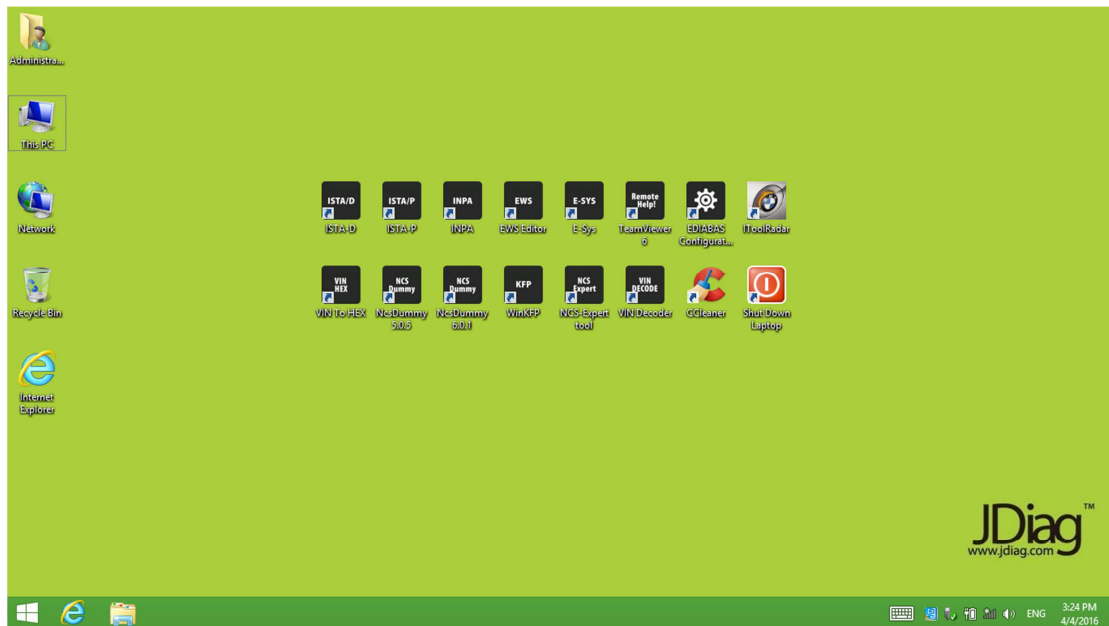


## Software included:

Software Name	Version	Vehicle
<b>Techstream</b>	V10.003	Toyota/Lexus/Scion
<b>HDS</b>	V3.015.033	HONDA/ Acura
<b>Consult III Plus</b>	V52.11	Nissan/ Infinit/ DATSUN
<b>SDD</b>	V142	Jagura/ Land Rover
<b>ODIS</b>	V3.0.1	VW/ Audi/ Skoda/Seat/ Bently/ Lamborghini
<b>Forscan</b>	V 2.2.11	Ford/ Mazda
<b>GDS2</b>	V 2016.02	GM/ Opel/ SAAB/ ISUZU/ SUZUKI
<b>Select Monitor III/IV</b>	V2016	Subru



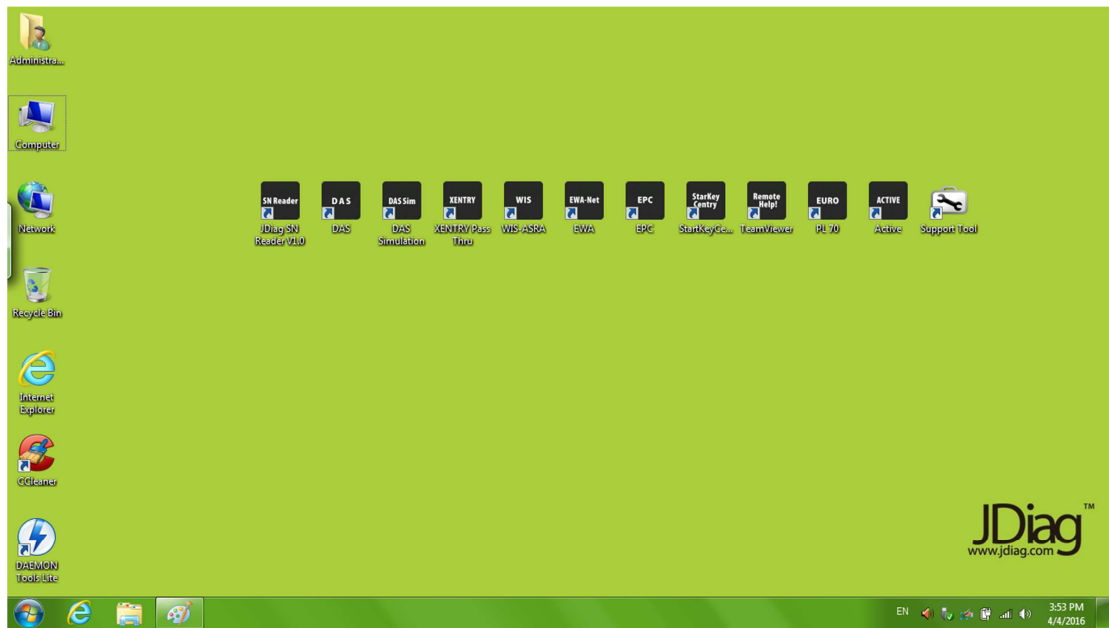
## Operation System 2.



## Software included

Software Name	Version
ISTA-D	3.54.12
ISTA-P	3.58.0.500
Ncs Dummy	5.0.5
Nsc Dummy	6.0.1
INPA	5.0.1
E-SYS	3.26.1
VIN To HEX	1.0
WinKFP	2016

## Operation System 3.



## Software included

Software Name	Version
DAS	2015/12
Xentry Passthru	2015/12
WIS	2015/10
EPC	2015/10
PL70	2016-01

**Note:**

The operation system 3 which with automatically recovery function please don't put any important files or database on this system, we strongly recommend you save your data to USB sticky.

**Technical Support**

If technical support finds it necessary for the unit to be returned for repair, you will be asked for your contact information and then provided with a Return Merchandise Authorization number (RMA#). JDiag Inc. will use the RMA to track the unit through the repair process. Please write this number on the outside of your shipping box so it can be routed to the correct department. If the necessary repair is not covered by JDiag's warranty, you will be contacted for payment arrangements. End users also allowed contact with local dealer for warranty. JDiag dealers are listed in our website <http://www.jdiag.com>

## Troubleshooting and Support

Some questions and answers to common questions with JDiag Elite:

***Q: How can I adjust the direction of the laptop screen? It shows wrong direction.***

A: The JDiag laptop with Gravity sensor inside to fit for the 180 degree turning. If the screen shows the opposite direction or wrong direction, you can adjust the direction by press: **Ctrl+Alt+Arrow** button to change the direction.

***Q: Can I remove or modify the welcome screen password?***

A: The JDiag laptop password all well setting before shipping to customers, if you want to OEM your own information on welcome screen or your own password, please contact with your local dealer for details !

---

**IMPORTANT:** All contents of the product may be deleted during the process of repair. You should create a back-up copy of any contents of your product before delivering the product for warranty service.

---

**JDiag**<sup>TM</sup>

JDiag Technology Inc.

All Rights Reserved

[www.jdiag.com](http://www.jdiag.com)

V1.00 |03/2016