
XTUNER-T1 USER MANUAL

1. Running environment	3
2. Software installation	3
2.1 Client downloading	3
2.2 Client setup.....	3
3. Software activation and downloads.....	8
3.1 Software activation.....	8
3.2 Software downloads.....	14
3.3 Software management.....	15
4. Software introduction	16
4.1 Online store	17
4.2 Diesel Diagnose.....	17
4.2.1 Features	17
4.2.2 Vehicle coverage.....	19
4.5 Settings	19
4.5.1 Run mode.....	19
4.5.2 Unit selection.....	20
4.5.3 Display mode.....	21
4.4.4 Logging	21
4.5.5 Update	22
4.5.7 About me	23
4.5.8 Skin Setting	24
4.6 DTC query.....	24
4.7 Example	26
4.7.1 Communication	26
4.8.2 Read DTCs.....	29
4.8.3 Erase DTCs	29
4.8.5 Data List	32
4.8.6 Actuation Test.....	36
4.8.7 Maintenance Oil Reset	38
4.8 Screenshot	39

4.9 Print	40
4.10 Manual	41
4.11 Diagnose function list	43
4.12 Feedback.....	45
4.13 Data Management	45
4.13.1 Image management.....	45
4.13.2 APP management	46
4.14 User Management.....	47
5. Products website	47
6. Warranty	47

1. Running environment

- Hardware environment:
 - Windows laptop, PC or PAD
 - CPU speed: more than 1.0G Hz
 - Memory: more than 1GB
 - Disk: more than 32 GB
 - Communication port: Wi-Fi or USB
- Software environment:
 - Windows XP, Windows 7, Windows 8, Windows 10

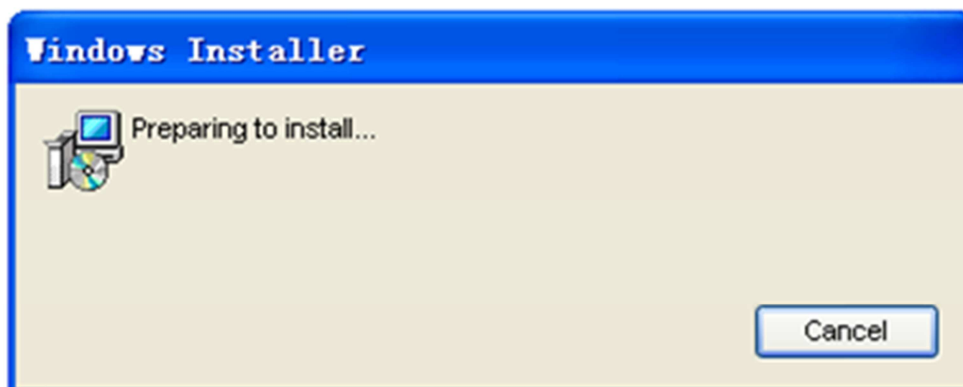
2. Software installation

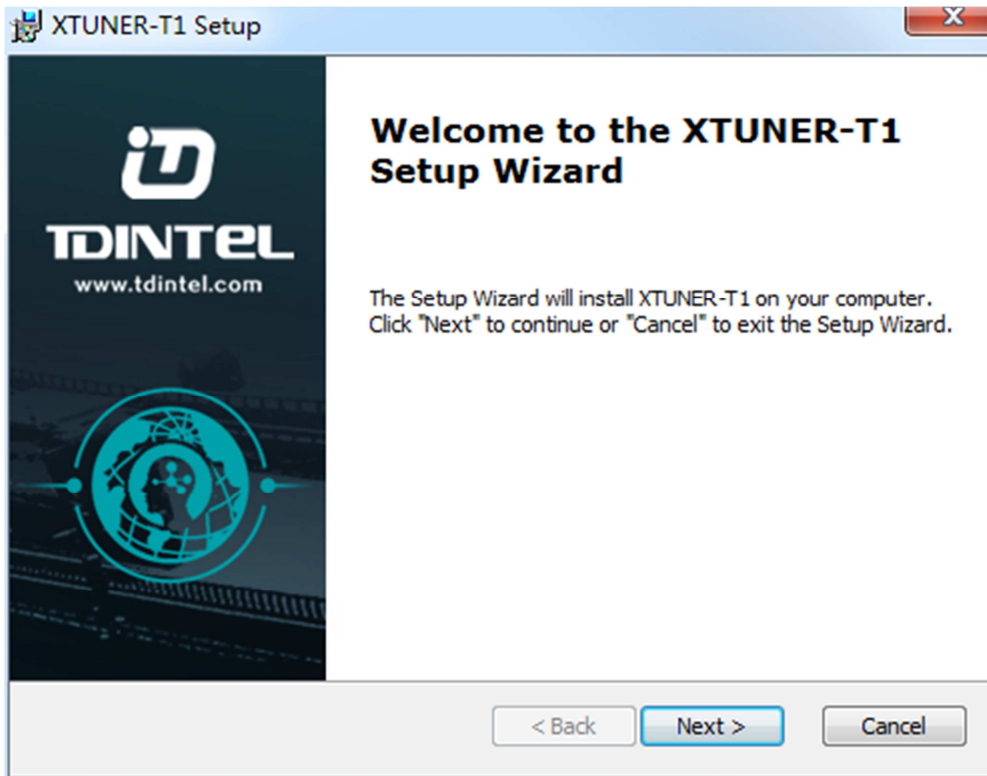
2.1 Client downloading

Access the website: <http://www.tdintel.com>, go into the Support page to download “XTUNER-T1 Setup Vx.xx”

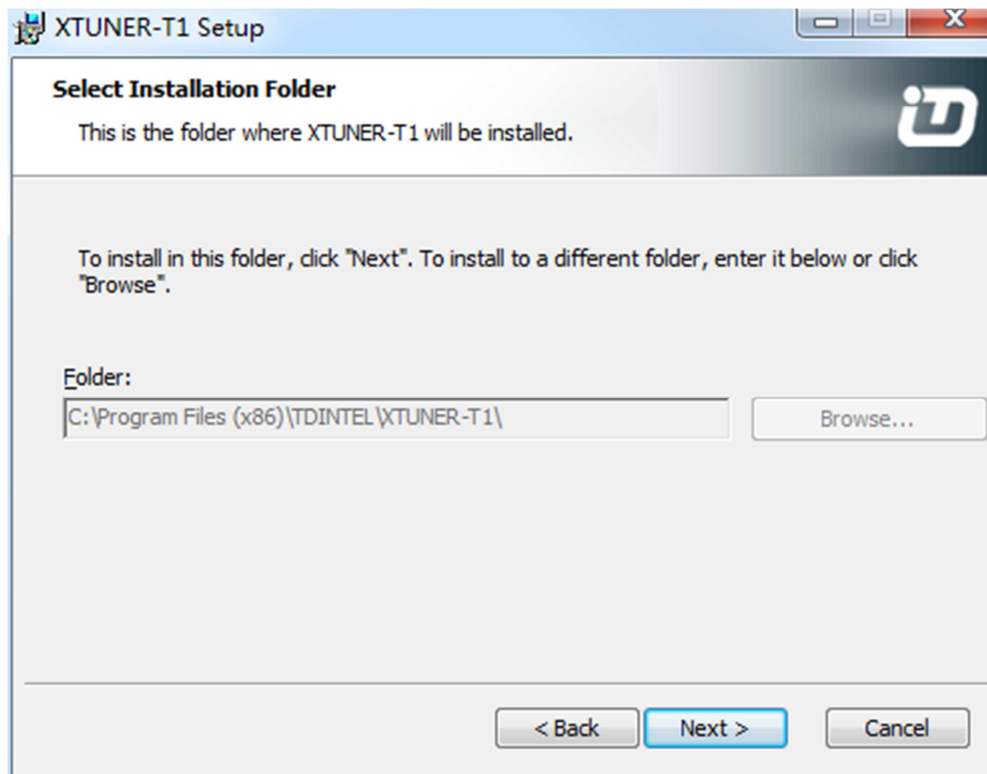
2.2 Client setup

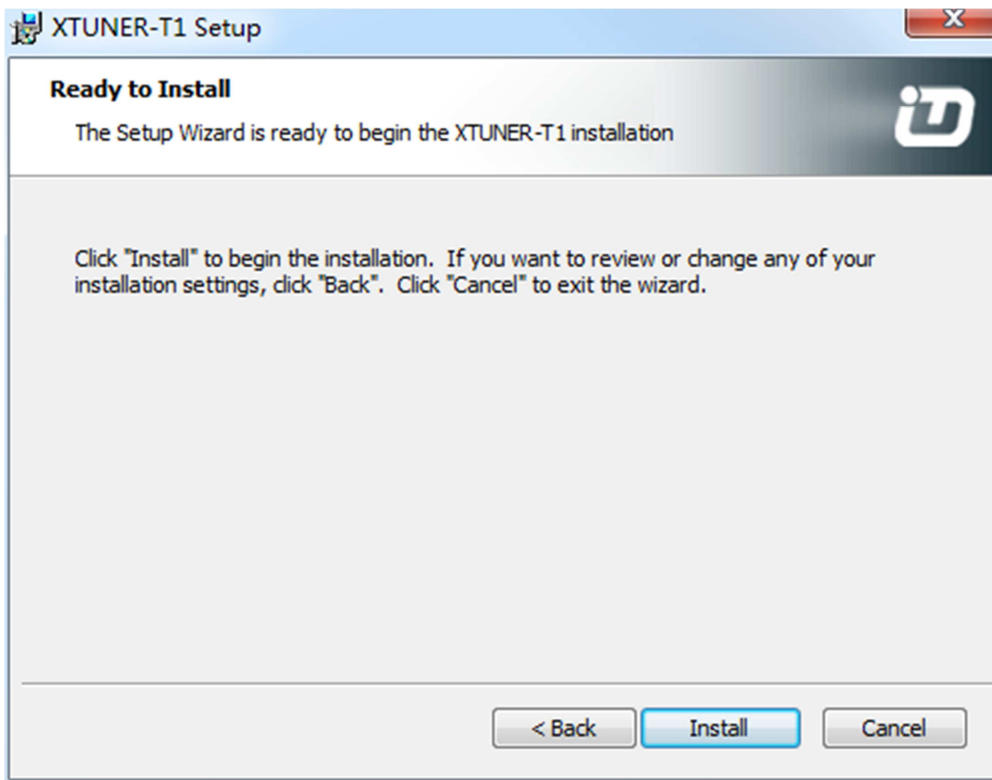
Unzip XTUNER-T1 Setup Vx.xx and run XTUNER-T1 setup.exe:



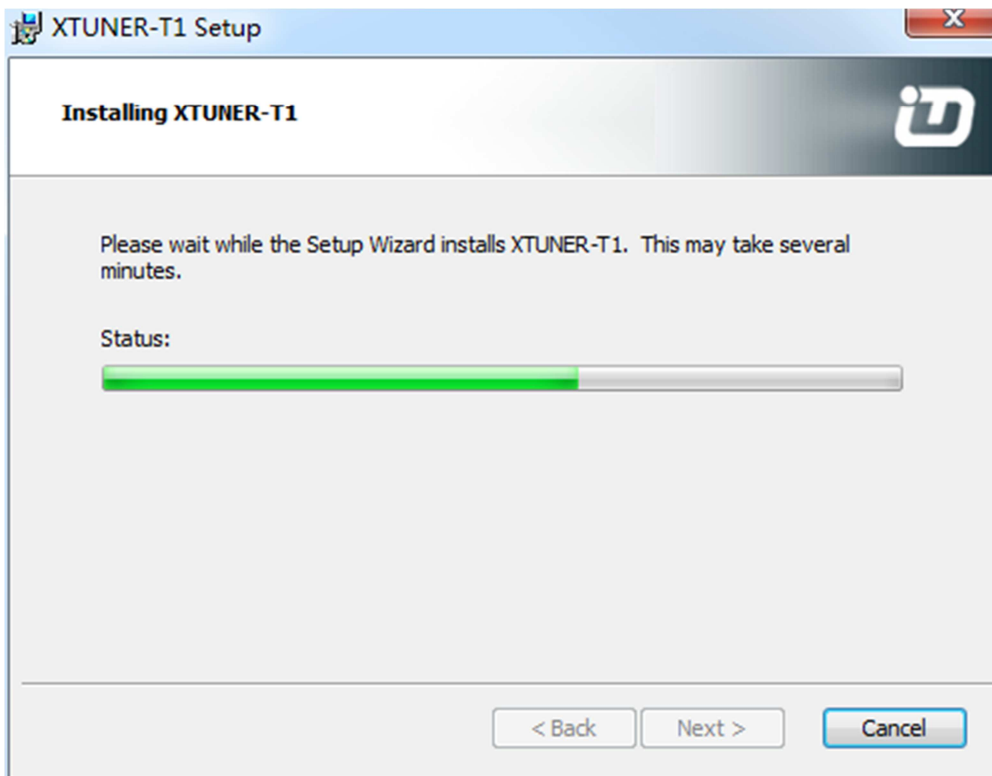


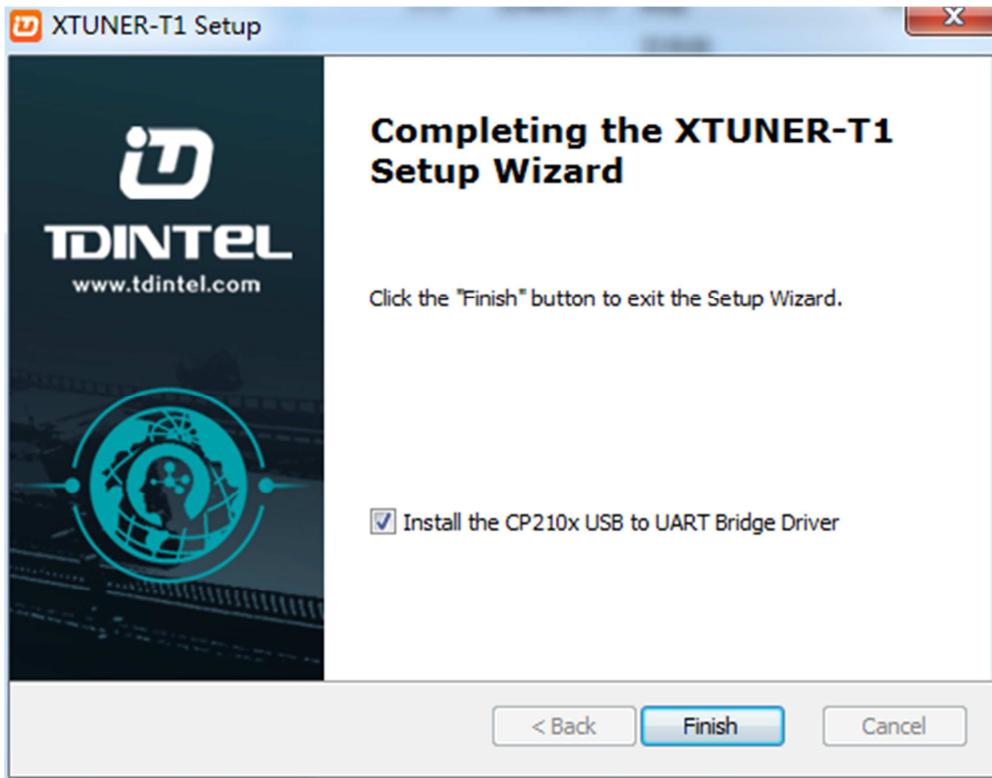
Please click "Next".



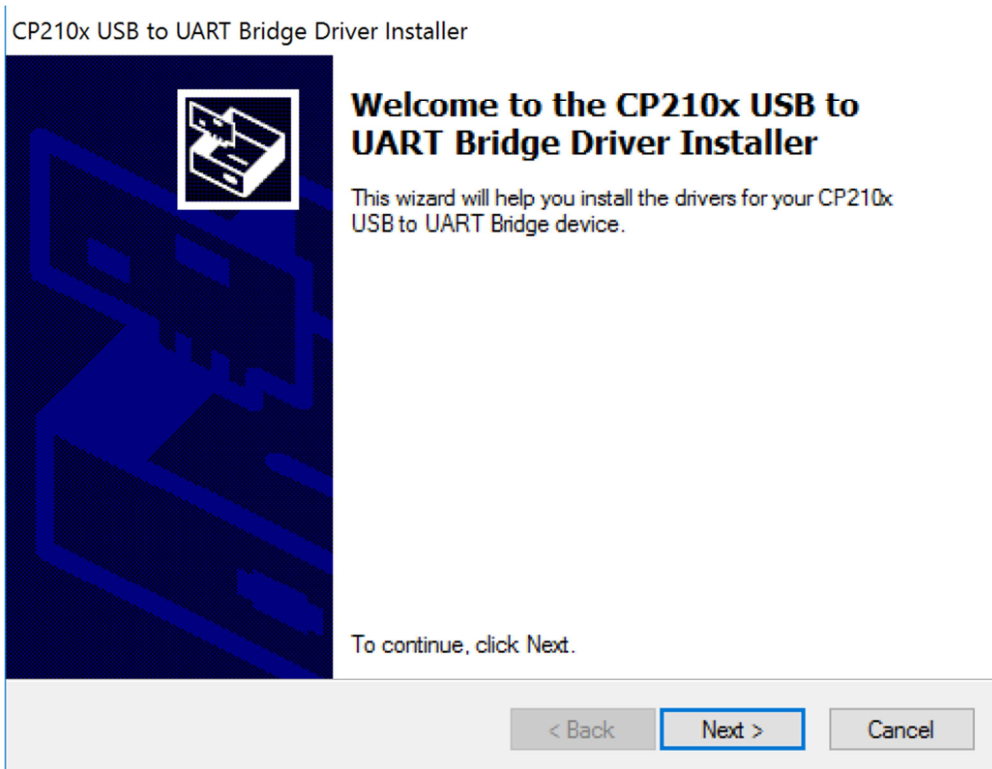


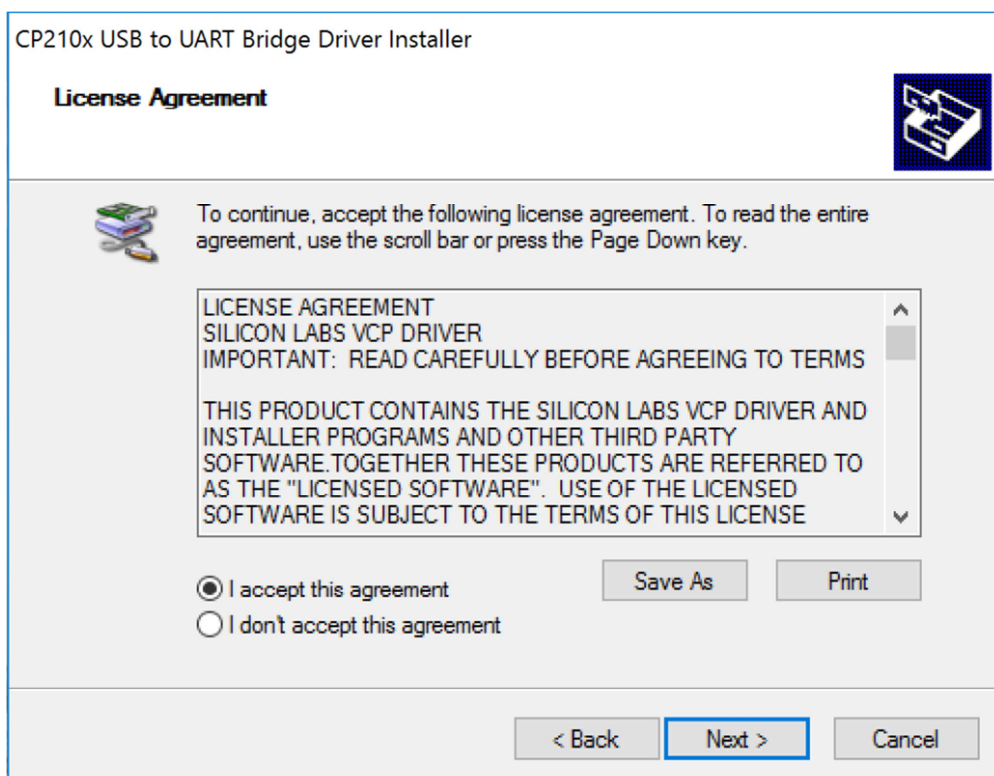
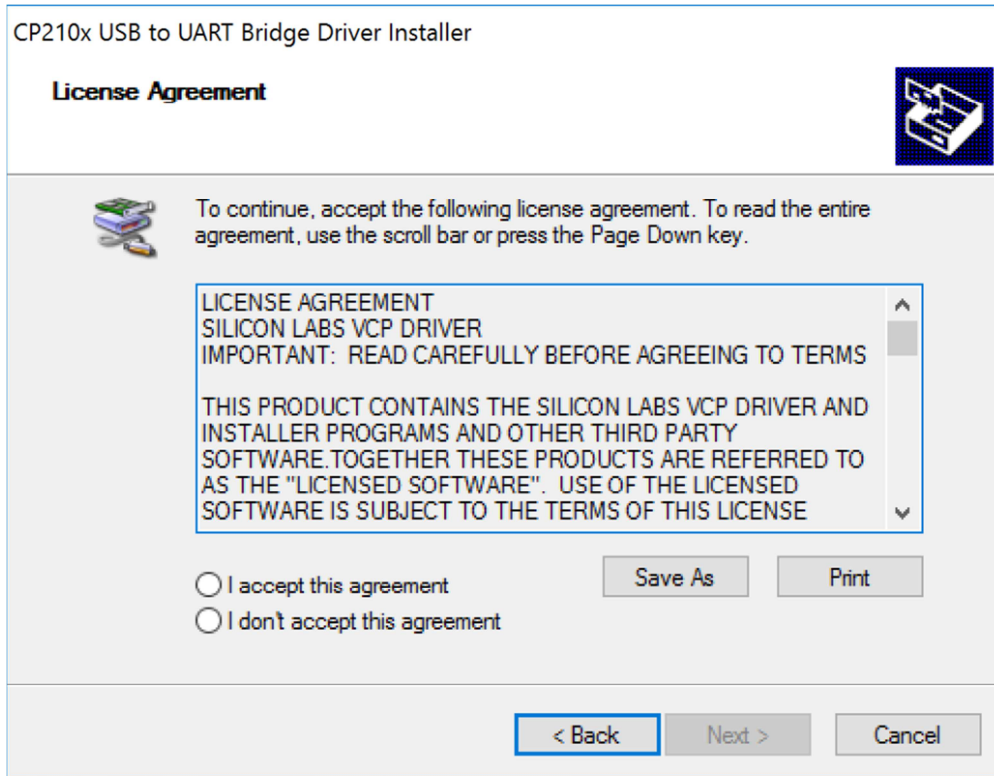
Please click "Install".

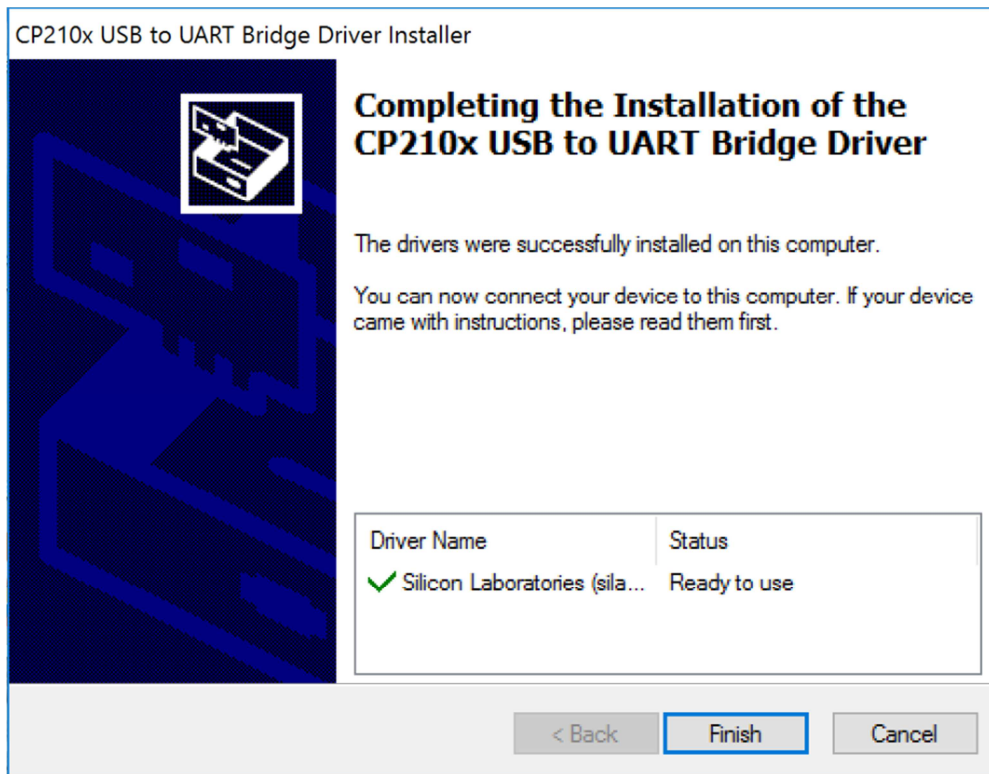




Select "Install the CP210x USB to UART Bridge Driver" to install the USB driver.







XTUNER-T1 diagnostic service system installs successfully.

3. Software activation and downloads

3.1 Software activation

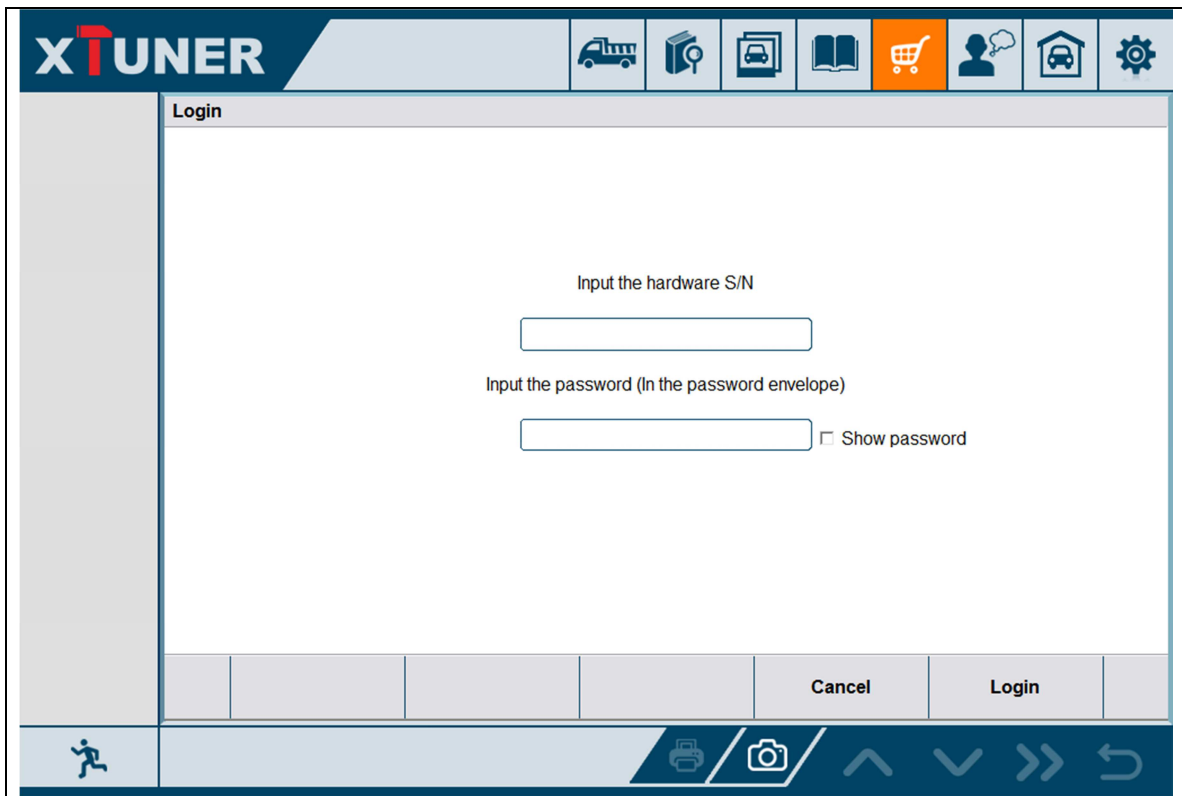
At first, please keep network working. Run XTUNER-T1 APP, then click “Online store” to get applications.



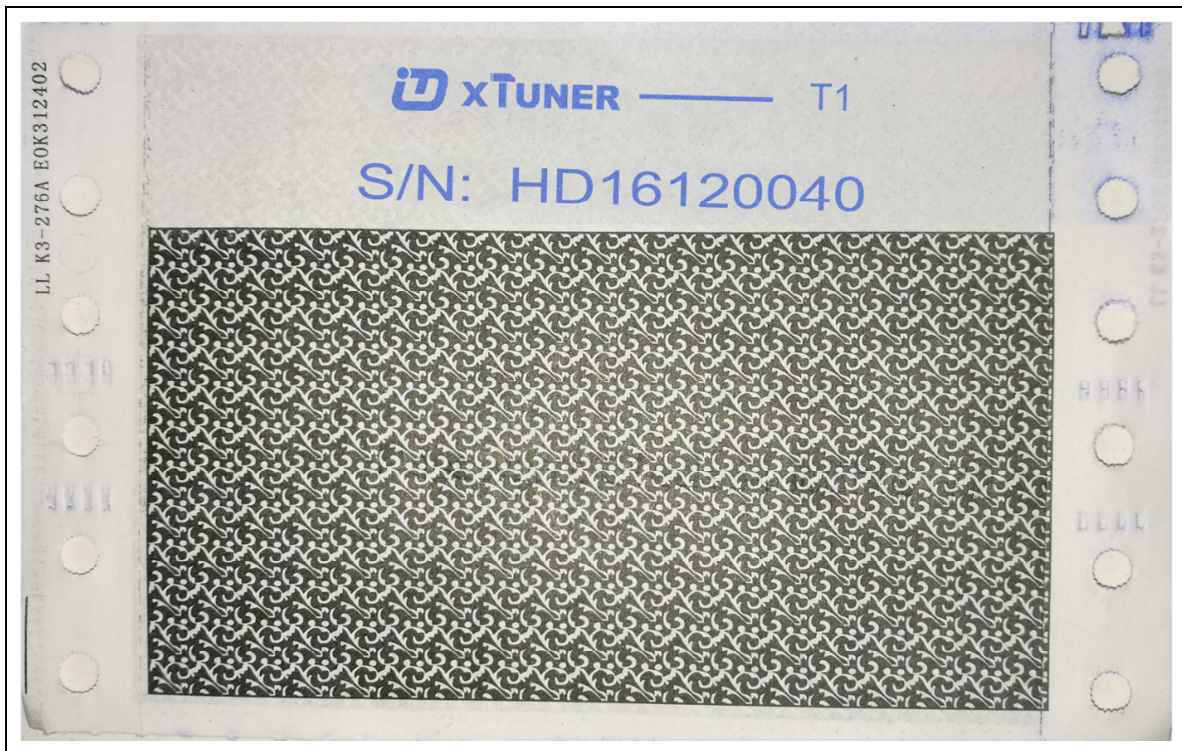
Please wait...

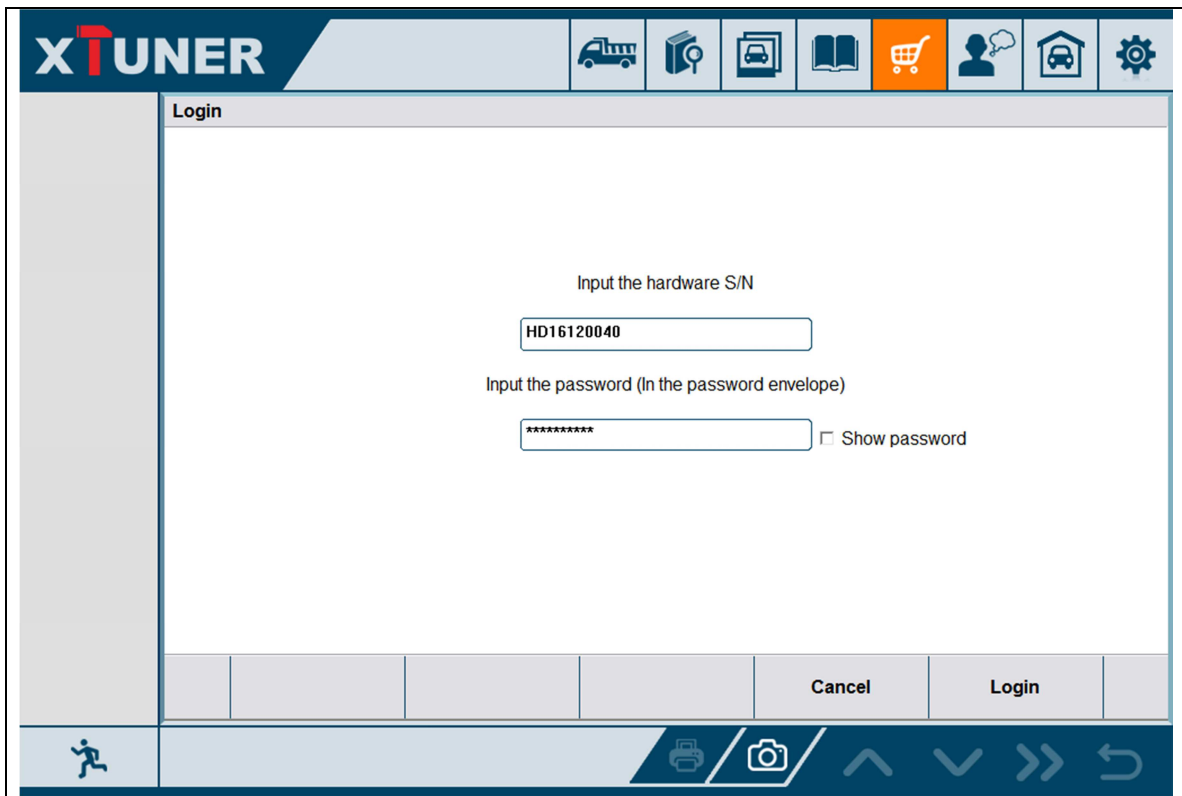


Please click “Online store”.

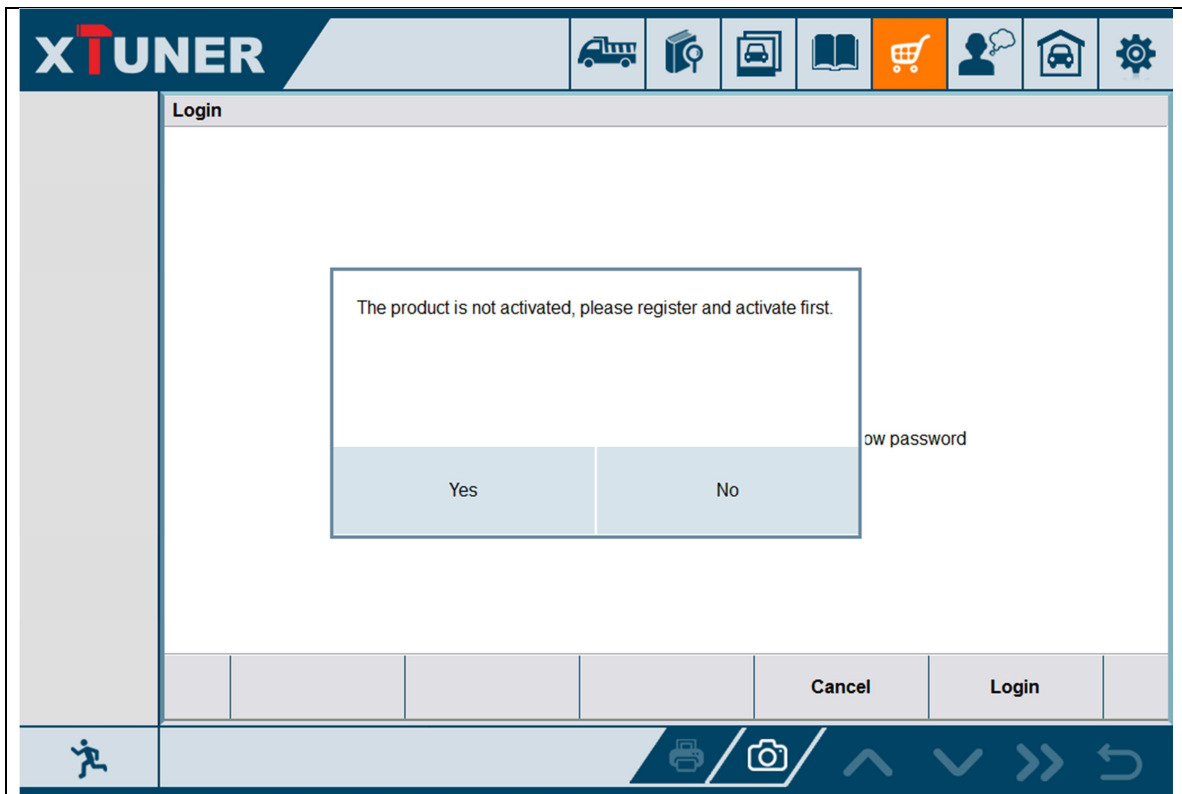


Please enter the S/N number and password get from the envelope, and then click “Login”.





Please click “Login”.



If the product is not activated, please click “Yes”.

Activation			
First Name	XTUNER-T1	Last Name	TDINTEL
Email*	allen@tdintel.com	Country \ region*	China
Company	TDINTEL TECH Co.,Ltd.		
<div style="border: 1px solid gray; padding: 5px;"> * required Please input correct information for better service! </div>			
		<input type="button" value="Cancel"/> <input type="button" value="Activate"/>	

Please input your information, the Email address and the country \ region are required, and then click “Activate”.

Activation			
First Name	XTUNER-T1	Last Name	TDINTEL
Email*	allen@tdintel.com	Country \ region*	China
Company	TDINTEL TECH Co.,Ltd.		
<div style="border: 1px solid gray; padding: 10px;"> <p>Customer information is committed successfully! The activated link has been sent to your email, please log in your email and click the link to activate the product in 30 minutes. If you do not receive the activation email, please add "service@tdintel.com" to the white list of your mailbox and try the activation process again.</p> <div style="display: flex; justify-content: space-around; margin-top: 10px;"> <input type="button" value="Yes"/> <input type="button" value="No"/> </div> </div>			
<div style="border: 1px solid gray; padding: 5px;"> * required Please input correct information for better service! </div>			
		<input type="button" value="Cancel"/> <input type="button" value="Activate"/>	

Note:

Your email address must be real in order to get the activated link and the further better service from the manufacturer. The software update reminder and the new product release information will be sent to your email.

If you do not receive the activation email, please add "service@tdintel.com" to the white list of your mailbox and try the activation process again.

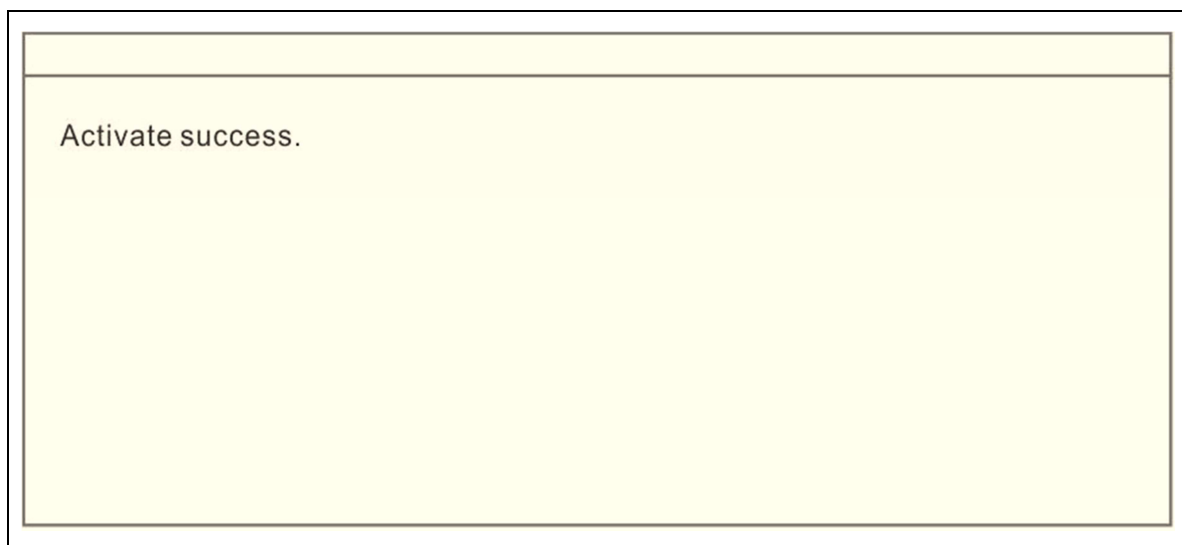
Company name: company name must be filled in and the length is within 250 characters.

Country \ region: please choice your country \ region in the list.

Press "Yes" to confirm your information:

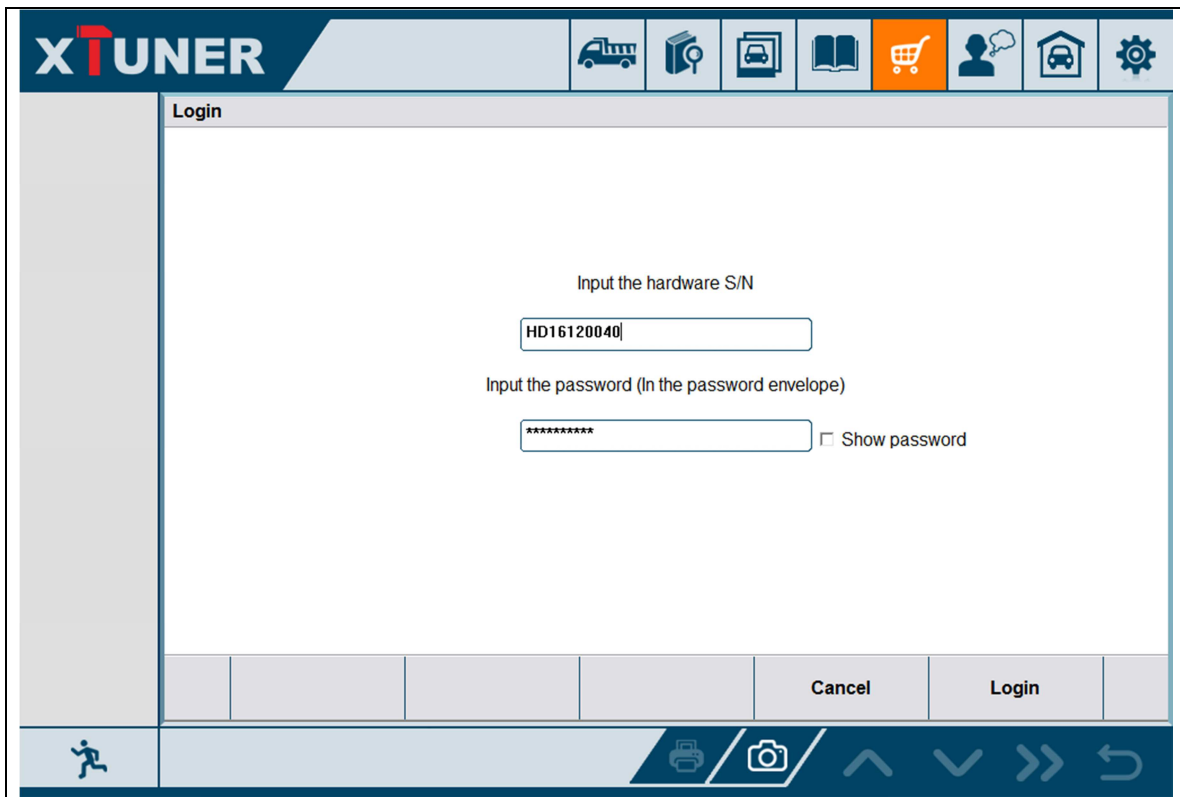


Please click the link to get the confirmation from the manufacturer.

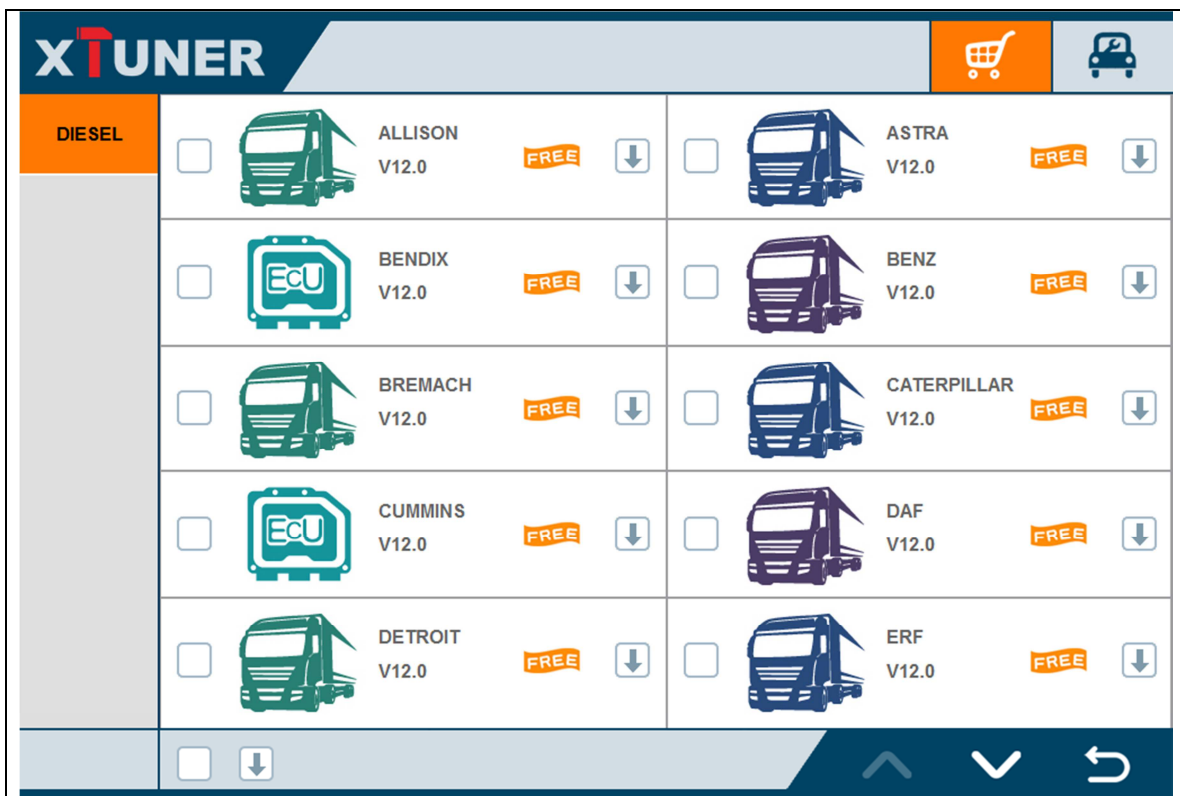


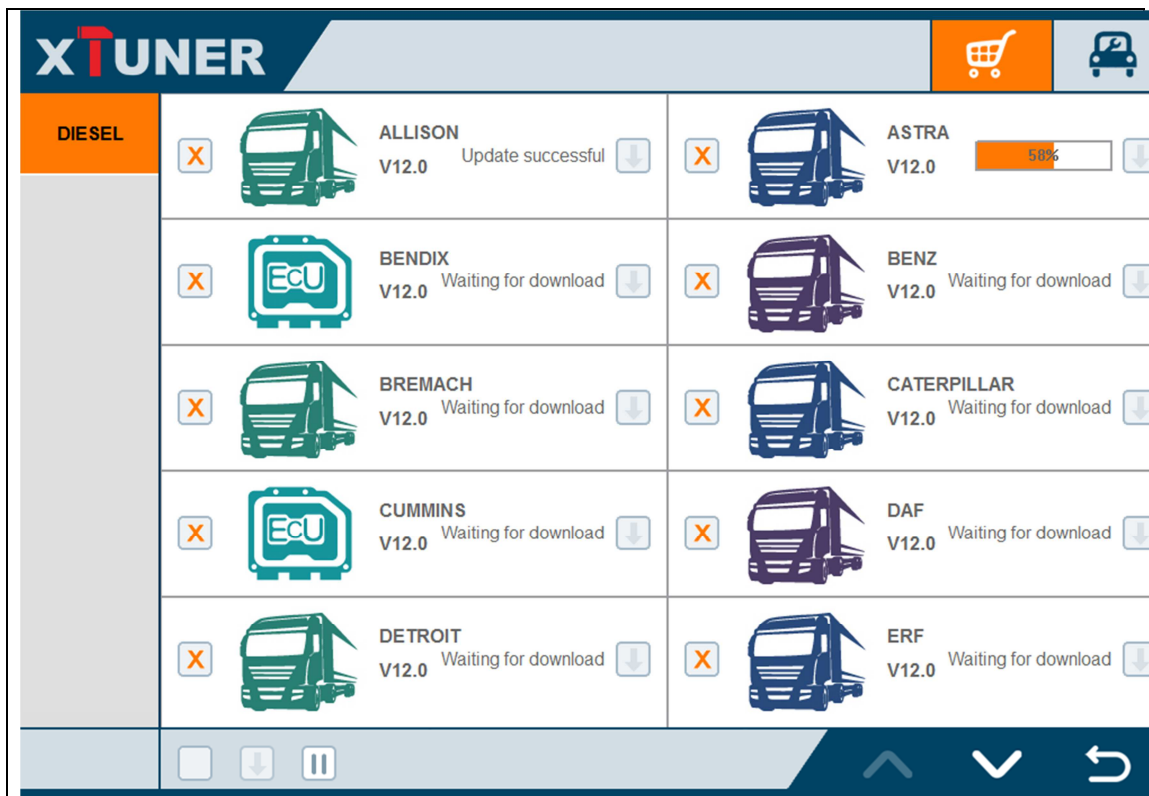
3.2 Software downloads

After the activation, please login the online store again, and get the APPs upgrade.



Please, click “Login” to download the software.

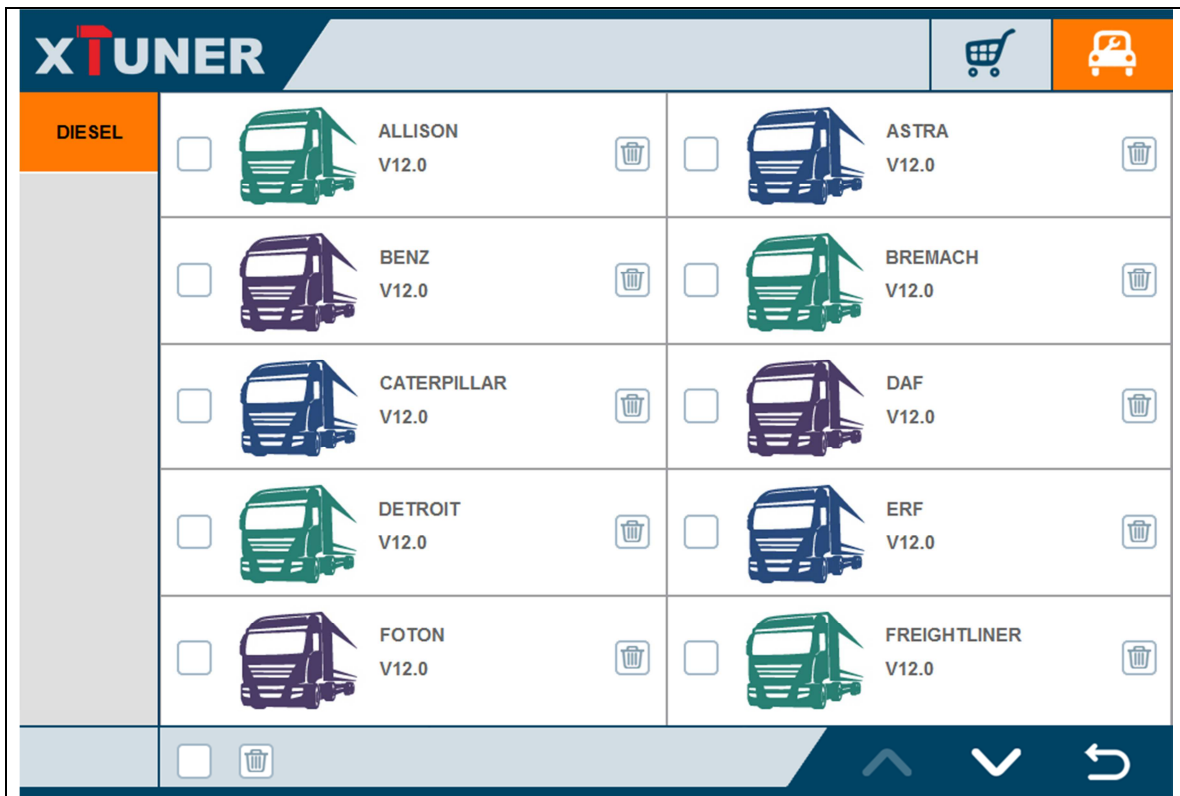




There are two modes for downloading, one by one and one-click. It may take a long time to download all the software, depend on the speed of customers' network.

3.3 Software management

Users can delete vehicle software here. You can delete one by one or all-selected delete.



4. Software introduction

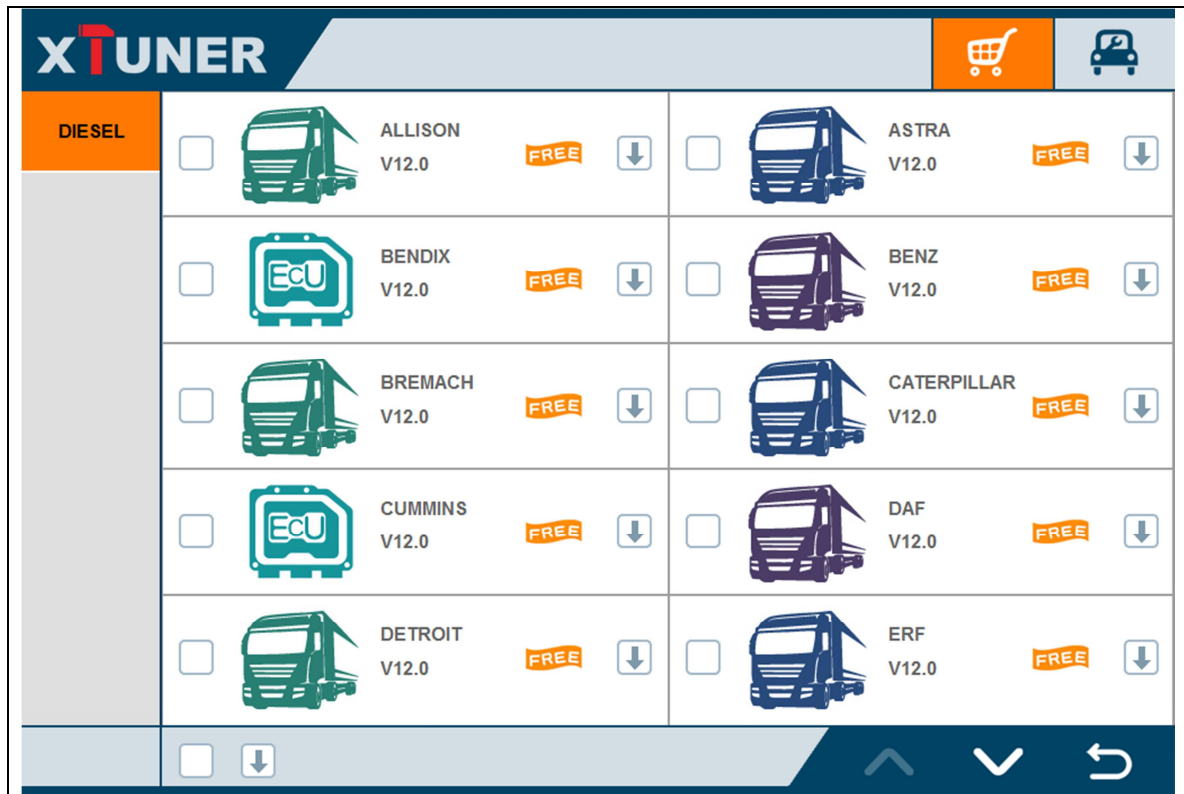
Run XTUNER-T1, The screen will show:



4.1 Online store

Features

- Automatic Wi-Fi updates available in new software releases by smart upgrade mode.
- Wi-Fi internet capability allows for wireless access throughout the workshop.



4.2 Diesel Diagnose

4.2.1 Features

- Extensive vehicle coverage for heavy-duty trucks (29 brands).
- Complete function capability including DTC, DTC freeze Info, Live data, Actuation test and Special function.
- Support standard protocol J1939, J1708 and J1587.

XTUNER

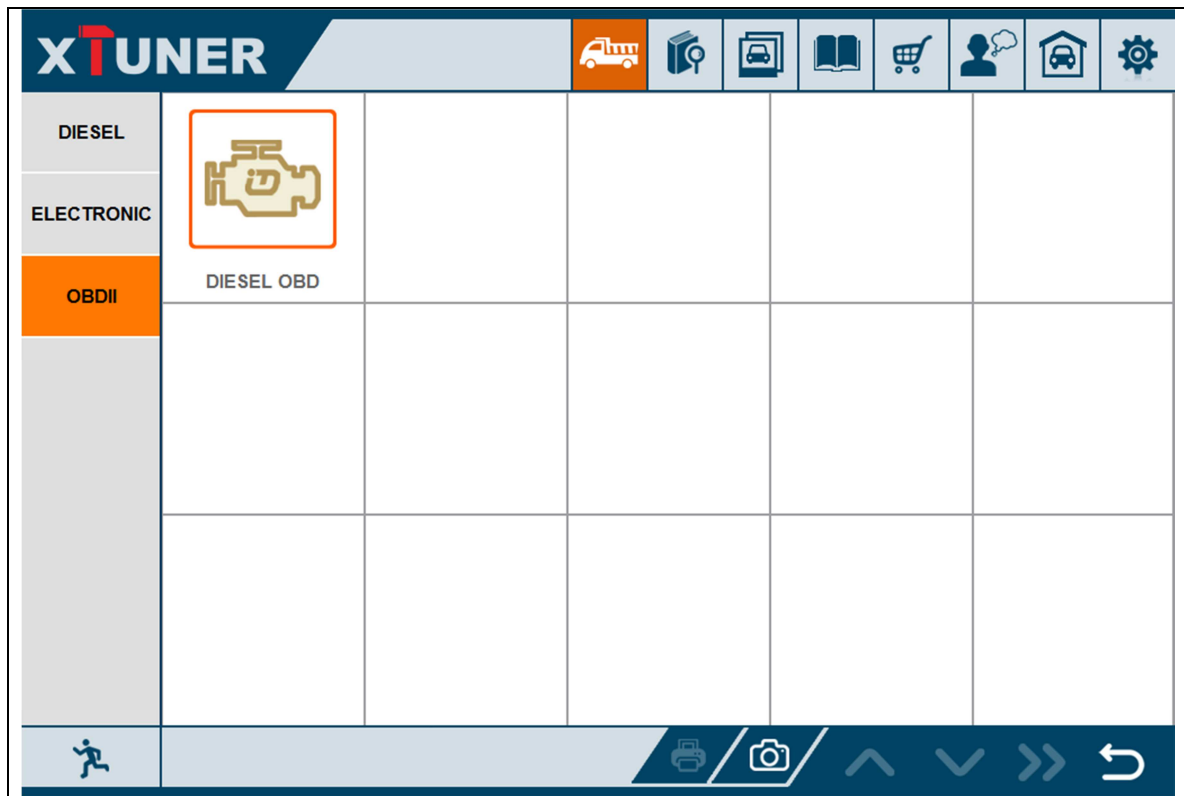
DIESEL					
ELECTRONIC					
OBDII	ALLISON	ASTRA	BENZ	BREMACH	CATERPILLAR
	DAF	DETROIT	ERF	FOTON	FREIGHTLINER
	HINO	HYUNDAI	INTERNATIONAL	ISUZU	IVECO

^
v
>>
↶

XTUNER

DIESEL					
ELECTRONIC					
OBDII	BENDIX	CUMMINS			

^
v
>>
↶



4.2.2 Vehicle coverage

DIESEL: ASTRA, BENZ, BREMACH, CATERPILLAR, DAF, DETROIT, ERF, FOTON, FREIGHTLINER, GM, HINO, HYUNDAI, INTERNATIONAL, IRAN, ISUZU, IVECO, KENWORTH, KIA, MACK, MAN, NAVISTAR, RENAULT, SCANIA, TOYOTA, UD, VOLVO, WABCO, etc.

ELECTRONIC: BENDIX, CUMMINS, etc.

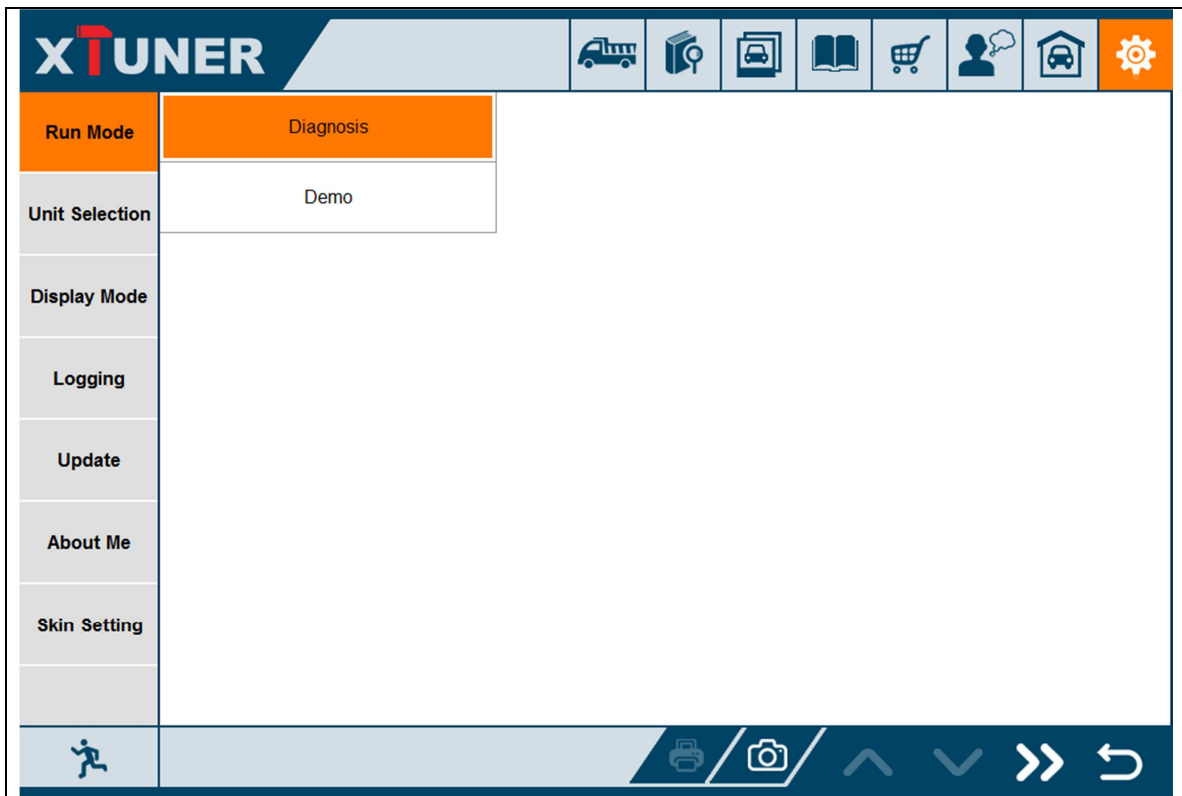
OBDII: DIESEL OBD.

4.5 Settings

4.5.1 Run mode

It has Demo, so even XTUNER-T1 is not connected, it can simulate how it works.

As the picture shows:



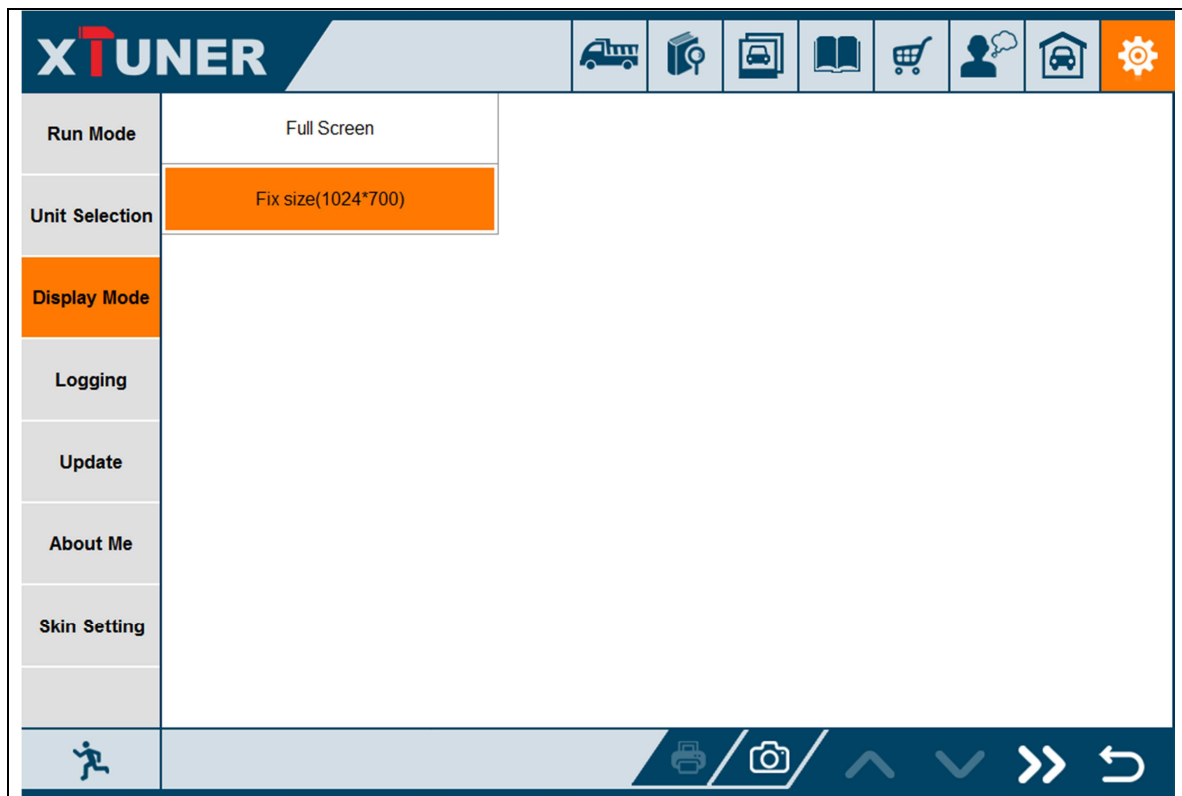
4.5.2 Unit selection

Unit switch between Metric and Imperial system:



4.5.3 Display mode

Display modes between Full Screen and Fixed Size (1024 x 700):



4.4.4 Logging

Logging function is available; it can log the data of vehicle communication.



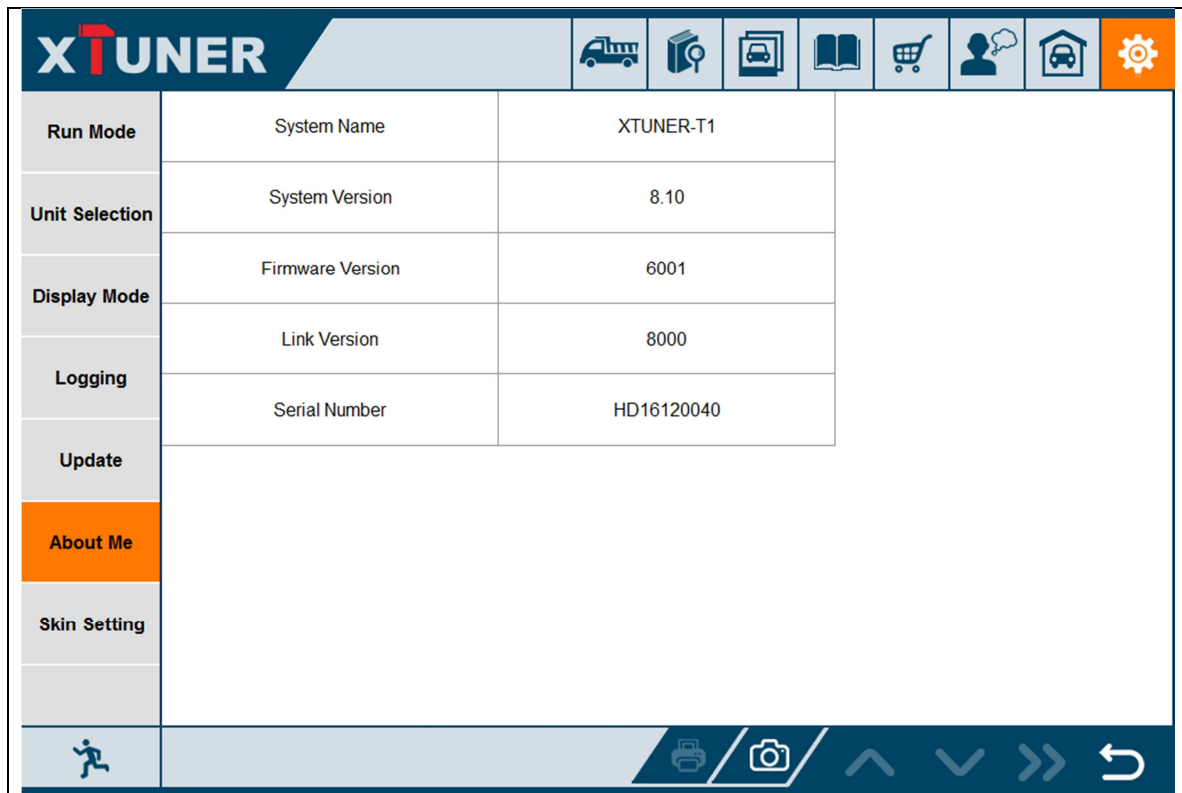
4.5.5 Update

If there is a new version, it can automatically prompt to update.



4.5.7 About me

Automatically identify XTUNER-T1 version information, when connection has problem (Wi-Fi or Bluetooth), and it can't read XTUNER-T1 Hardware version, usually, it shows as "Unknown" or "---"; If the connection is OK, it shows hardware version. As the picture shows:



4.5.8 Skin Setting



Here you can change the background color.

4.6 DTC query

DTC query function is a DIY function, users can query, modify and create OBD DTCs by themselves requirement in local DTCs, and users can synchronize to TDINTEL company cloud server through the internet too.

XTUNER
AUTO DTC QUERY SYSTEM

Please input a DTC code and click the search button

🔍

P0123

Systems

P=Powertrain
C=Chassis
B=Body
U=Network

Code Type Generic(SAE):
P0, P2, P34-39
B0, B3
C0, C3
U0, U3

Manufacturer Specific:
P1, P30-P33
B1, B2
C1, C2
U1, U2

Sub-systems:

- 1=Fuel and Air Metering
- 2=Fuel and Air Metering
- 3=Ignition System or Engine Misfire
- 4=Auxiliary Emission Controls
- 5=Vehicle Speed Control and Idle Controls
- 6=Computer Output Circuits
- 7=Transmission Controls
- 8=Transmission Controls

Identifying specific malfunctioning section of the systems

🏃
⬆
⬇
👤

XTUNER
AUTO DTC QUERY SYSTEM

Please input a DTC code and click the search button

🔍

DTC	Vehicle	Description
P1111	GM_HOLDEN	Intake air temperature sensor signal high
P1111	FORD	Code unallocated
P1111	JAGUAR	Code unallocated
P1111	BMW	Radiator outlet coolant temperature sensor signal low
P1111	VOLVO	Ambient air temperature sensor signal error
P1111	ISUZU	Intake air temperature sensor signal high
P1111	SUBARU	MAP/Barometric pressure sensor signal high
P1111	MAZDA	Code unallocated
P1111	HONDA	Intake air temperature sensor signal high
P1111	TOYOTA	Converter clutch override sensor signal shorted
P1111	NISSAN	Intake variable cam timing solenoid circuit malfunction

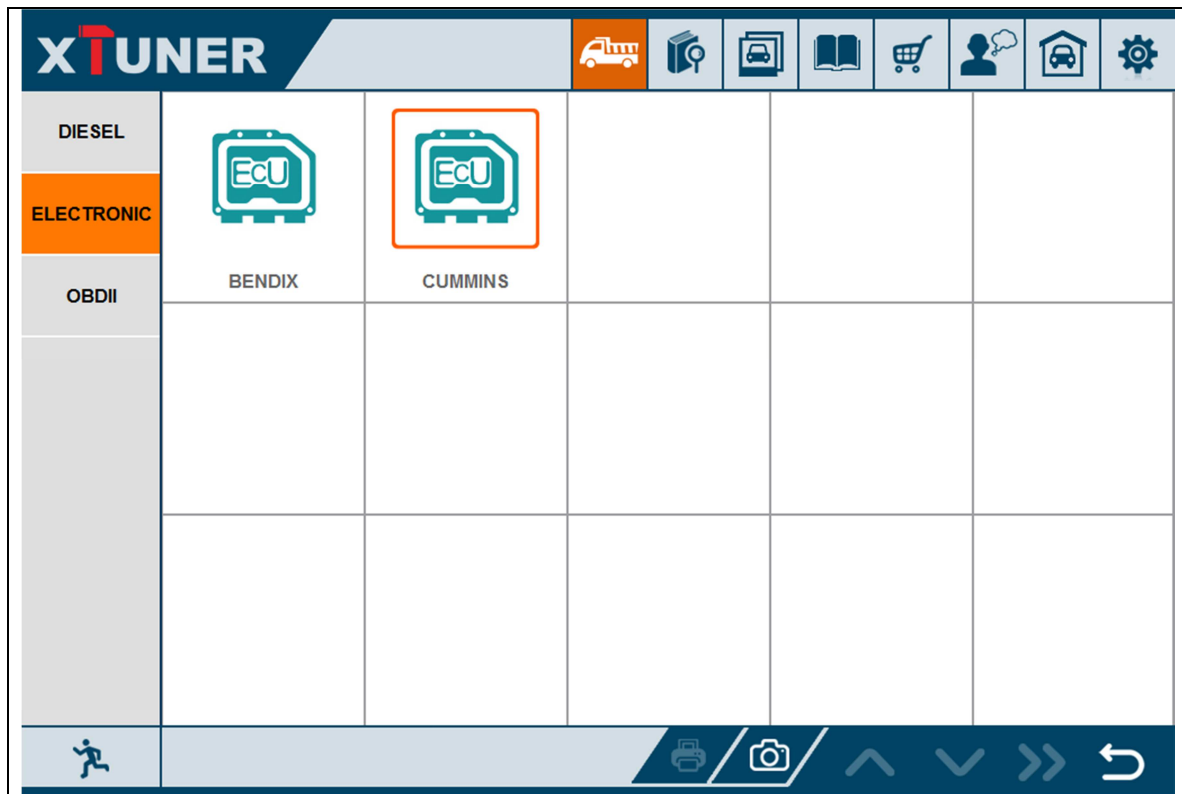
🏃
⬆
⬇
👤

4.7 Example

4.7.1 Communication

Please connect XTUNER-T1 with the vehicle. After connection, the power indication light will turn on. Search the WIFI of XTUNER-T1 on the PC or pad, and connect the WIFI point manually. If the WIFI connection successful, the WIFI indication light will turn on.

Run the XTUNER-T1, and start to diagnose.



Choose the vehicle you need, and enter the diagnostic system:

XTUNER

DIESEL

ELECTRONIC

OBDII

CUMMINS
V12.0

Code Coverage Detail

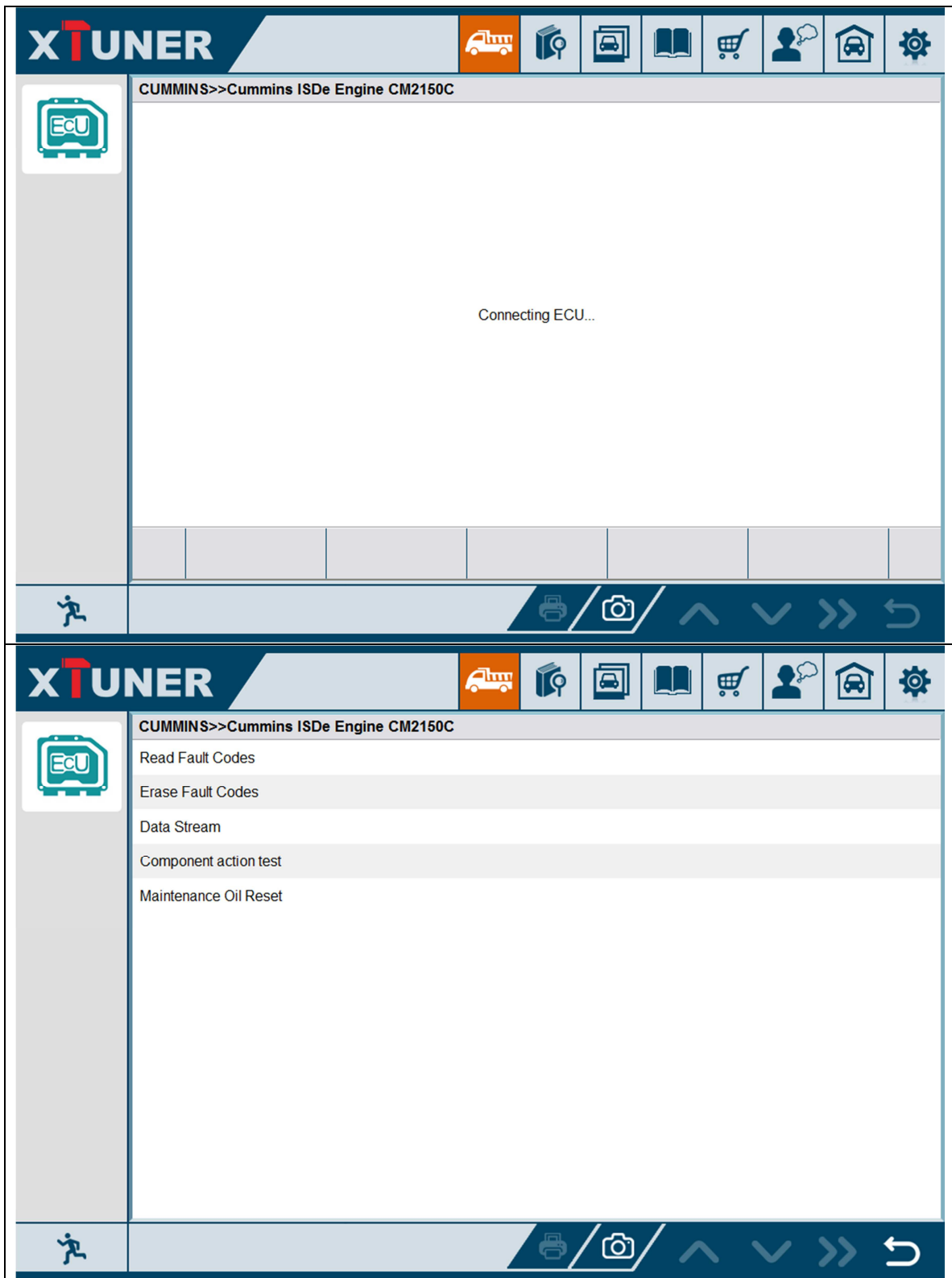
Covered system: Cummins ISDe Engine CM2150C, Cummins ISBe Engine, Cummins ISLe Engine CM2150, Cummins ISC/ISL Engine, Cummins ISMe Engine, Cummins ISZe Engine CM2150D, Cummins ISXe Engine, Cummins QS series, Other Cummins Engine.

Please press next page.

XTUNER

CUMMINS>>

- Cummins ISDe Engine CM2150C
- Cummins ISBe Engine
- Cummins ISLe Engine CM2150
- Cummins ISC/ISL Engine
- Cummins ISMe Engine
- Cummins ISZe Engine CM2150D
- Cummins ISXe Engine
- Cummins QS series
- Other Cummins Engine



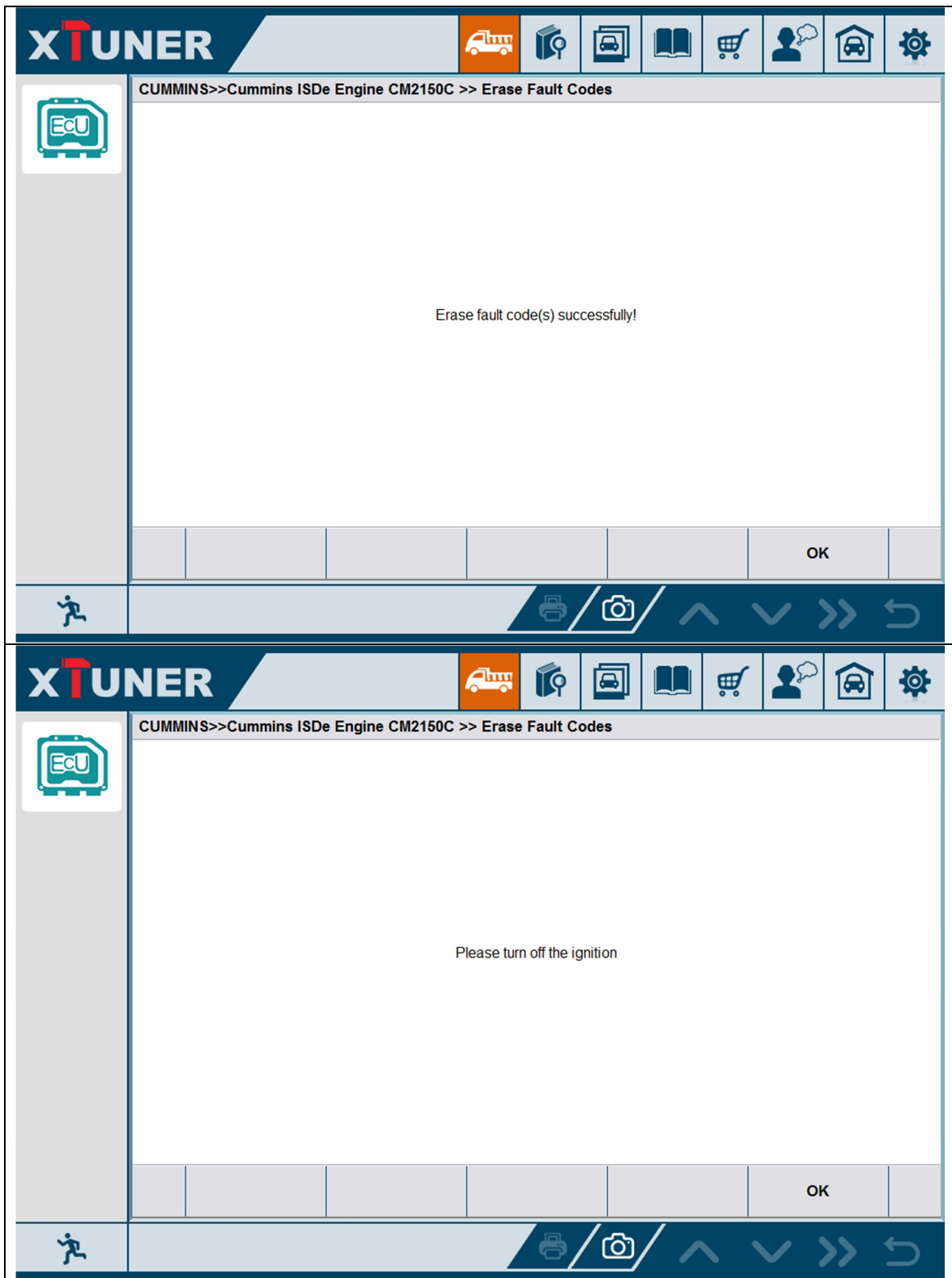
4.8.2 Read DTCs

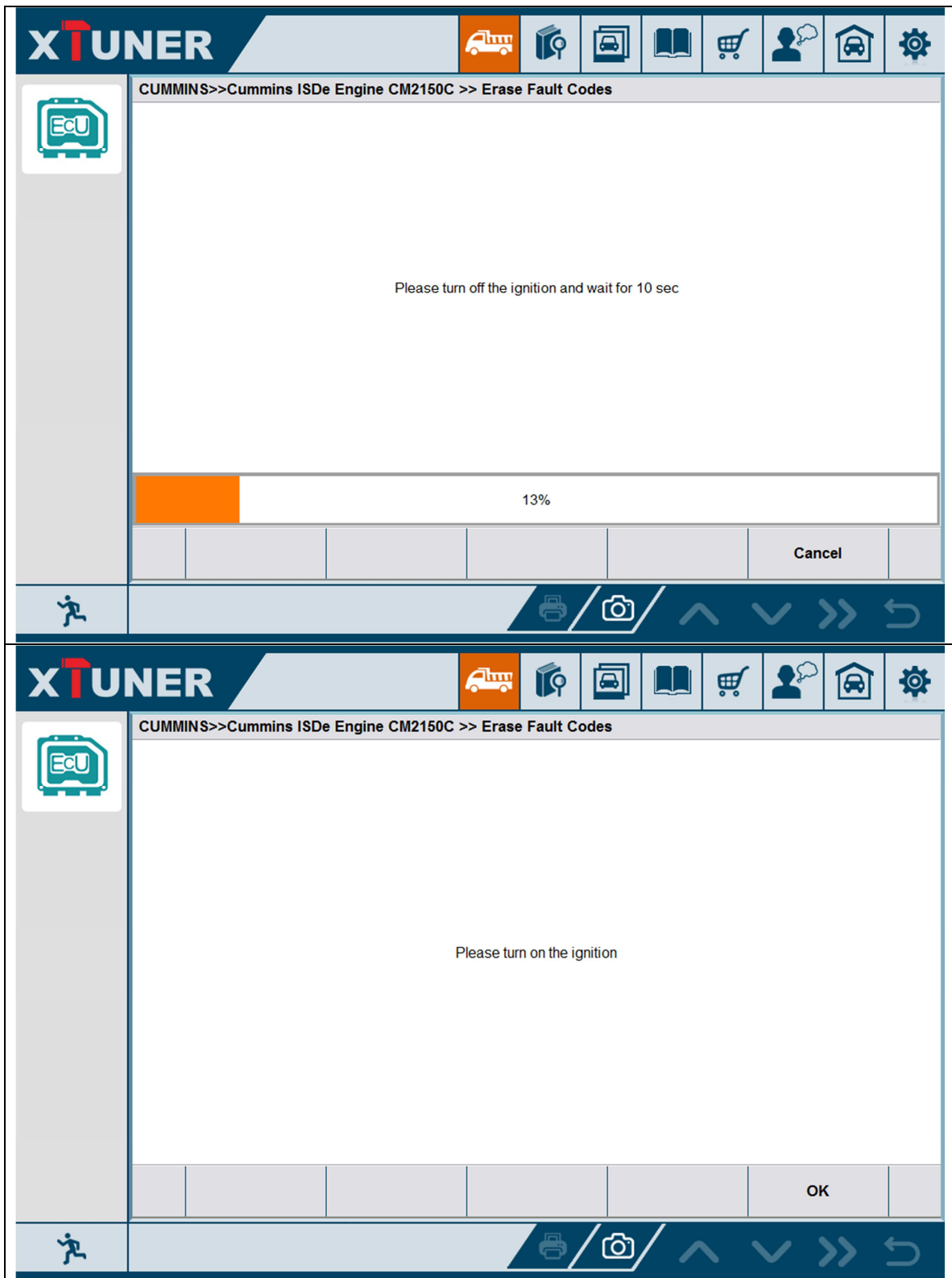
DTC	Description	Status
1117	Power Lost without Ignition Off - Data Erratic, Intermittent, or Incorrect	Present
0272	High Fuel Pressure Solenoid Valve Circuit - Voltage Above Normal, or Shorted to High Source	Present
0123	Intake manifold pressure sensor circuit - voltage lower than normal or short to low voltage supply	Present
0451	Injector Metering Rail #1 Pressure Sensor Circuit - Voltage Above Normal, or Shorted to High Source	Present
0132	Accelerator pedal or lever position sensor circuit - voltage lower than normal or short to low voltage supply	Present
1241	Accelerator Pedal or Lever Position Sensor 2 Circuit - Voltage Below Normal, or Shorted to Low Source	Present

4.8.3 Erase DTCs

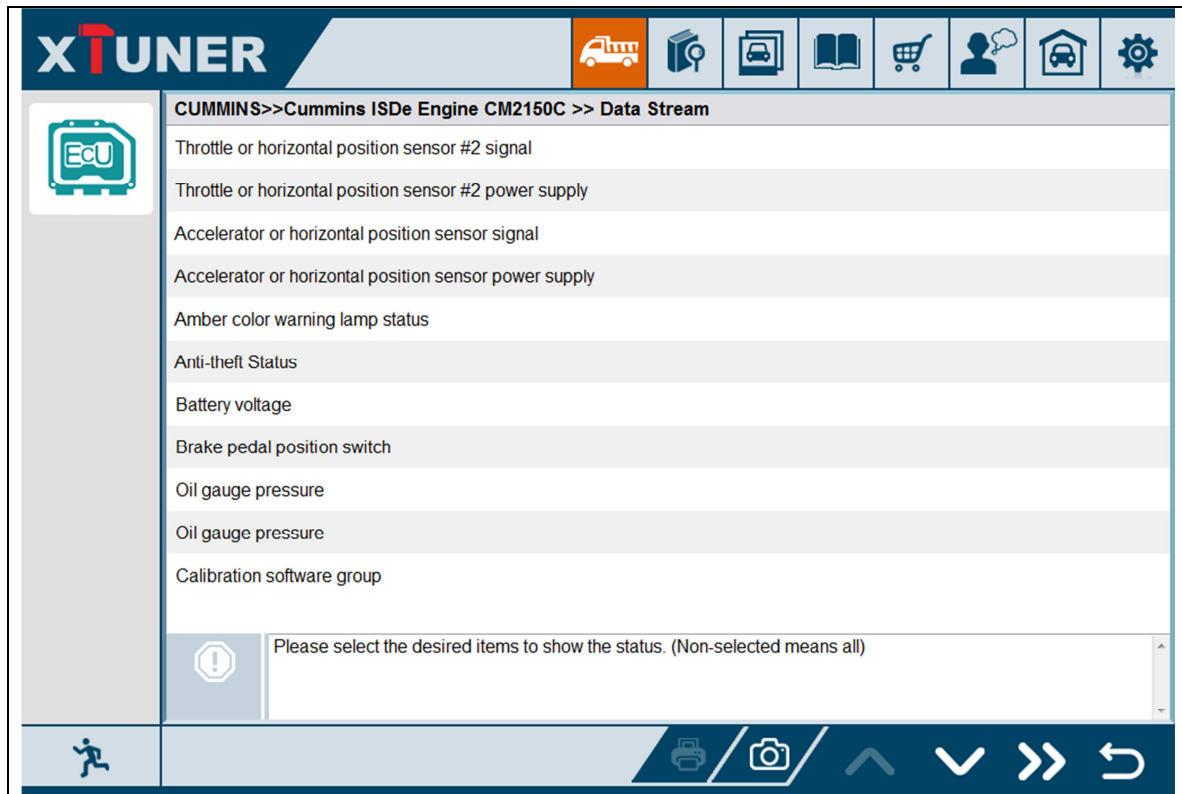
Do you want to erase all the fault code(s)?

No Yes

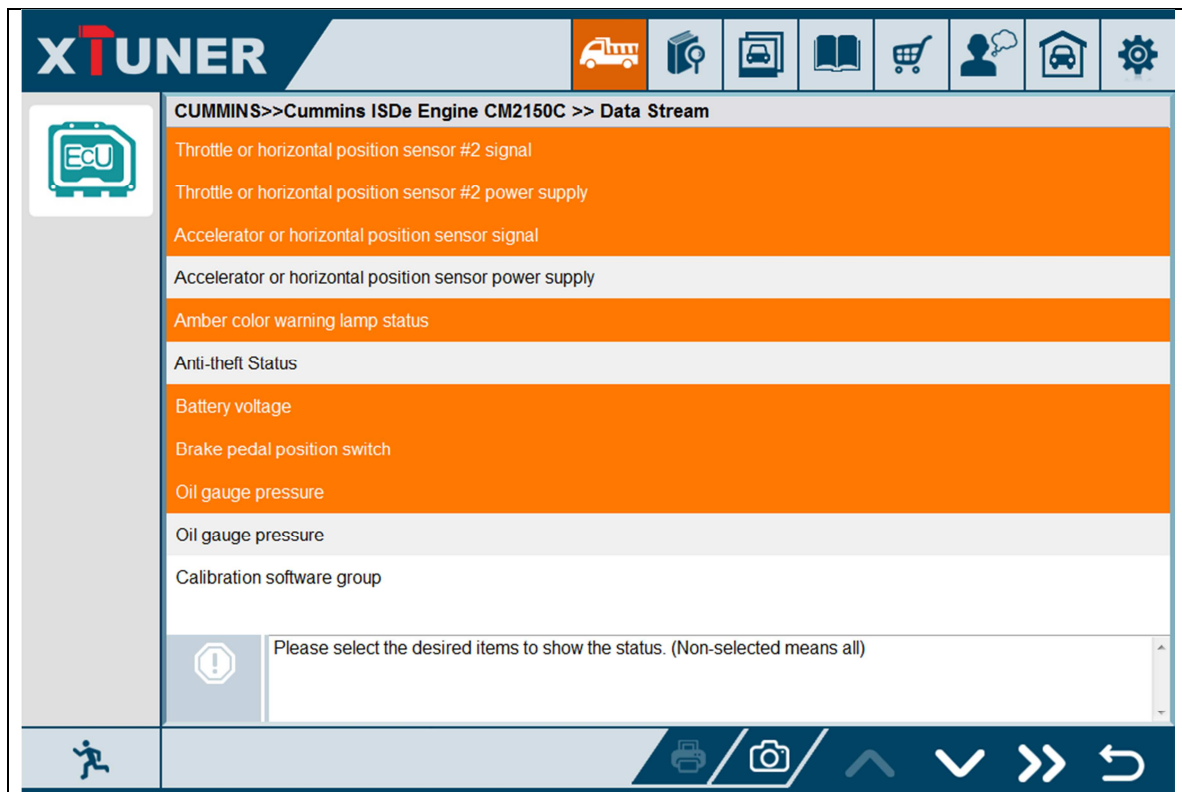




4.8.5 Data List



Select some items:



XTUNER CUMMINS>>Cummins ISDe Engine CM2150C >> Data Stream

Name	Value	Unit
Throttle or horizontal position sensor #2 signal	0.00	
Throttle or horizontal position sensor #2 power supply	50.27	
Accelerator or horizontal position sensor signal	0.00	
Amber color warning lamp status	Open	
Battery voltage	11.31	
Brake pedal position switch	The Next Step	
Oil gauge pressure	1200.00	

Buttons: Record, Play, Wave, Cancel

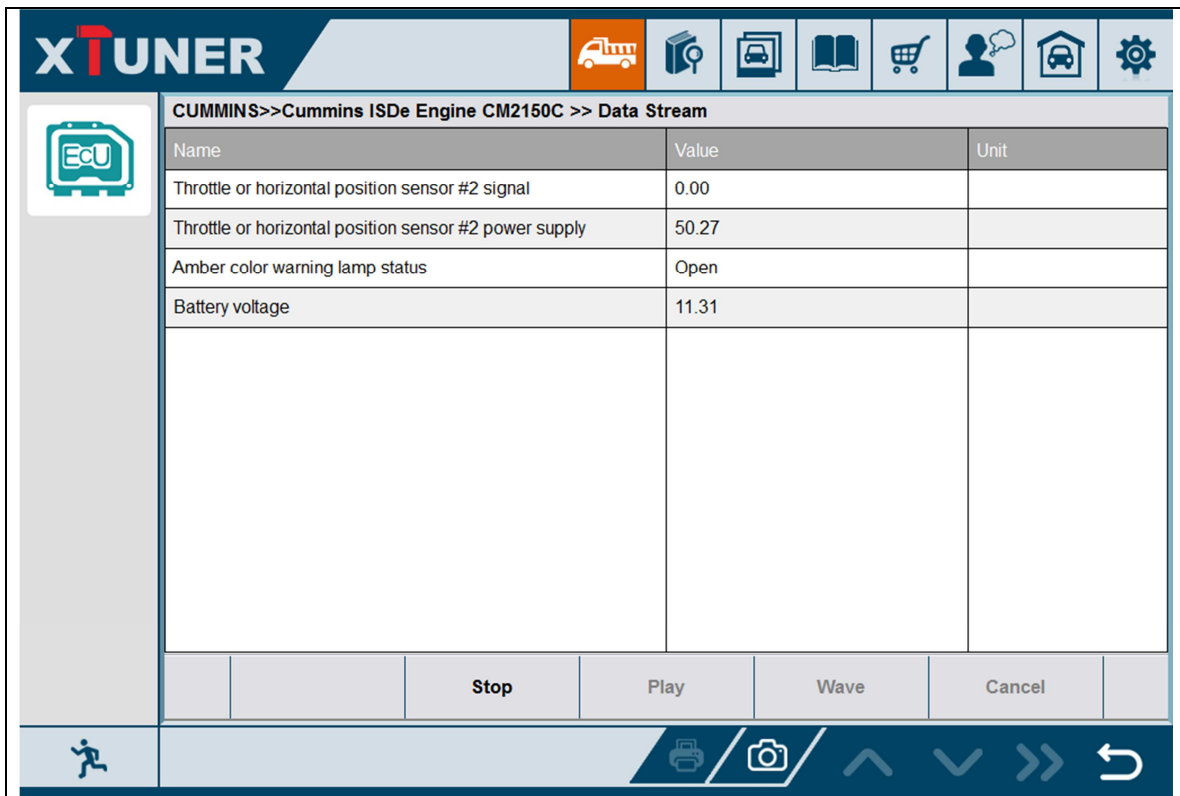
Select the 1st item, and click the Wave button:

XTUNER CUMMINS>>Cummins ISDe Engine CM2150C >> Data Stream

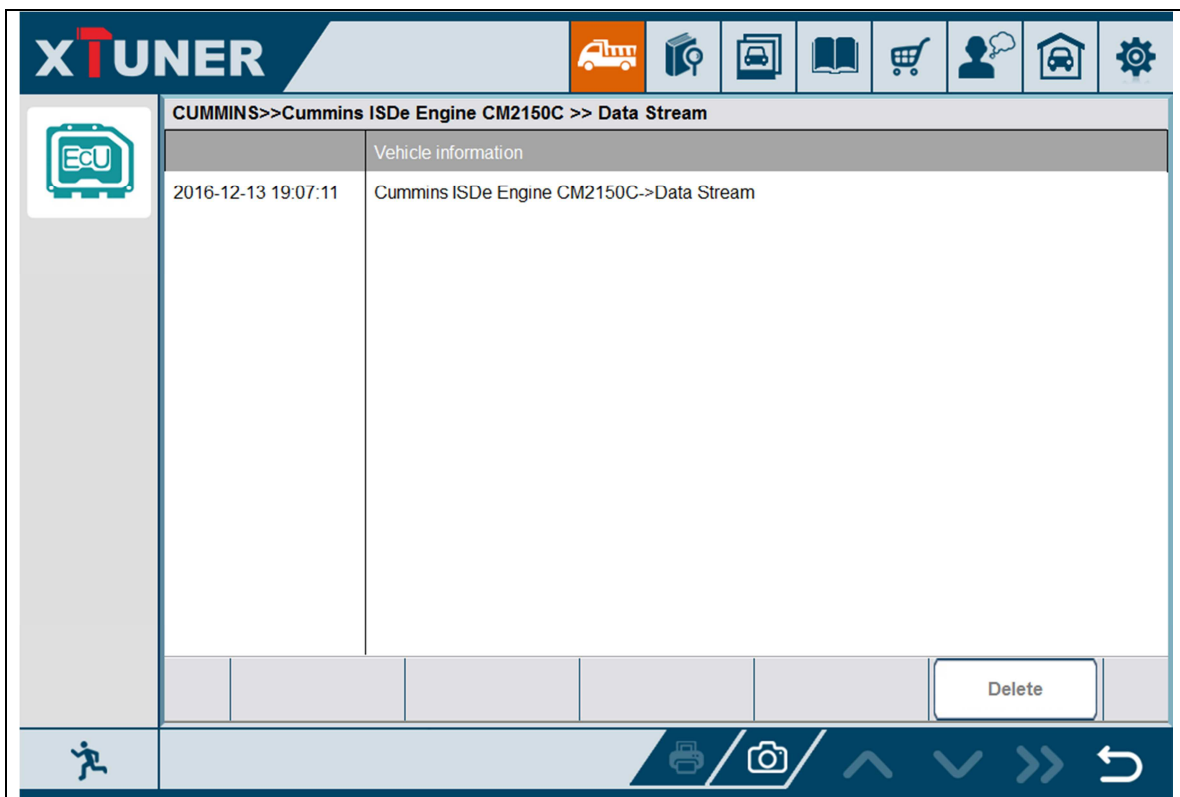
Name	Value	Unit
Throttle or horizontal position sensor #2 signal	0.00	
Throttle or horizontal position sensor #2 power supply	50.27	
Accelerator or horizontal position sensor signal	0.00	
Amber color warning lamp status	Open	
MAX:11.31		
MIN:10.44		
Battery voltage	11.31	
Brake pedal position switch	The Next Step	

Buttons: Record, Play, Data stream, Cancel

Click the Record button to start data recording, until to click Stop button to stop recording:



Click the Play button, it will show the recording data list, select one of them and replay the recording data:



XTUNER CUMMINS>>Cummins ISDe Engine CM2150C >> Data Stream

Vehicle information

2016-12-13 19:07:11 Cummins ISDe Engine CM2150C->Data Stream

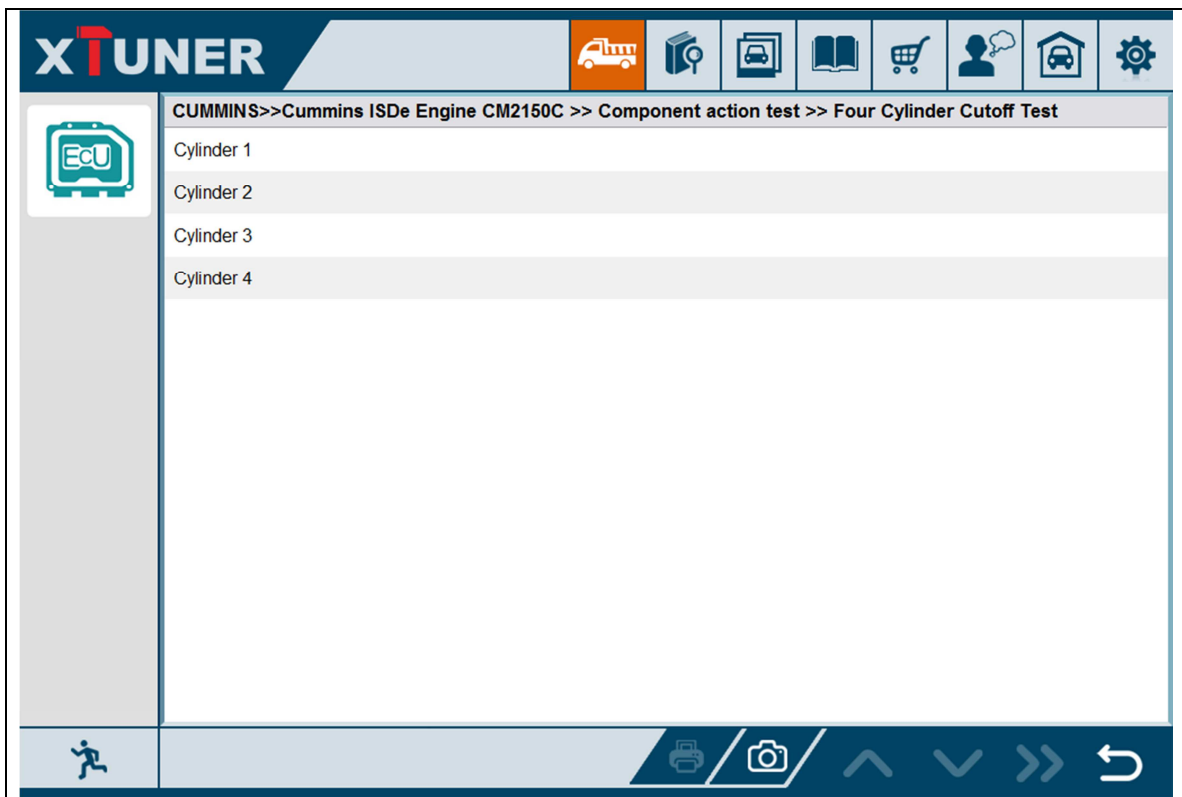
Delete

XTUNER CUMMINS>>Cummins ISDe Engine CM2150C >> Data Stream

Name	Value	Unit
MAX:0.00		
MIN:0.00		
Throttle or horizontal position sensor #2 signal	0.00	
MAX:50.27		
MIN:50.27		
Throttle or horizontal position sensor #2 power supply	50.27	
MAX:Open		
MIN:Open		
Amber color warning lamp status	Open	

Pause

4.8.6 Actuation Test



XTUNER

CUMMINS>>Cummins ISDe Engine CM2150C >> Component action test >> Four Cylinder Cutoff Test >> Cylinder 1

Name	Value
Test Result	---

Exit Reset Start

⏏ 📷 ⏪ ⏩ ↶ ↷

XTUNER

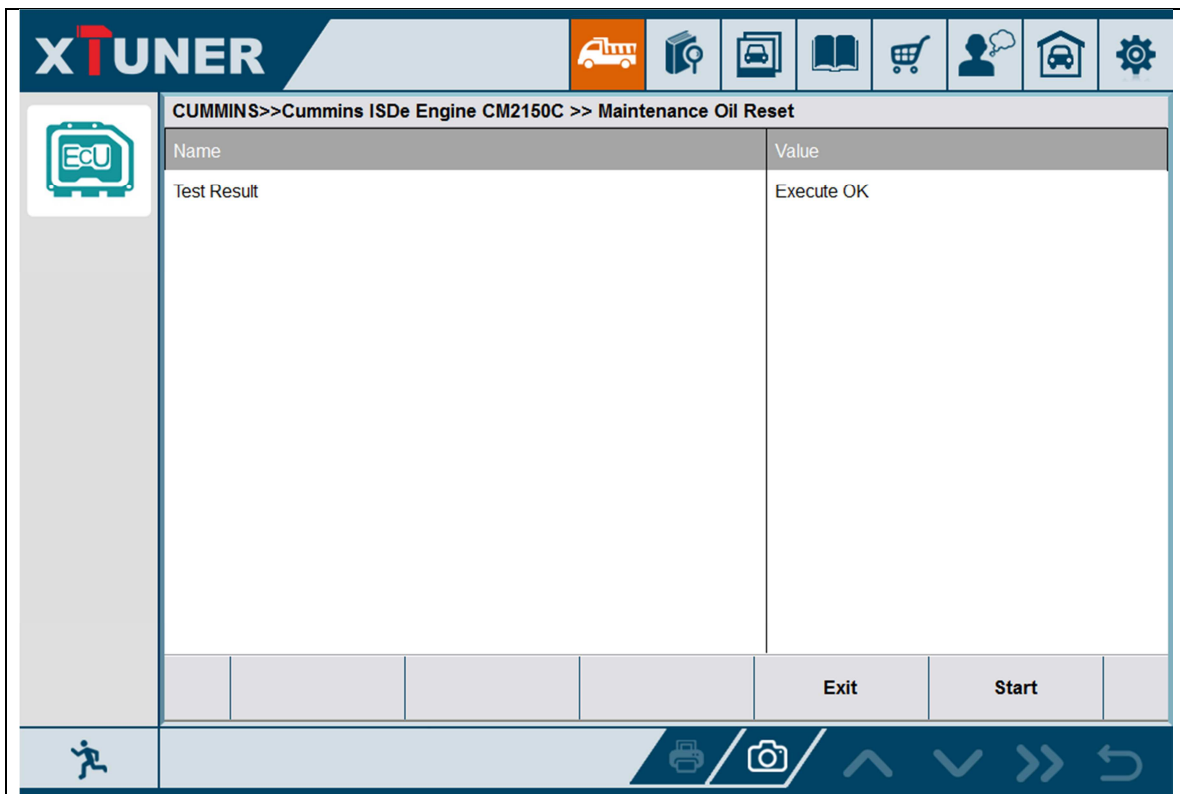
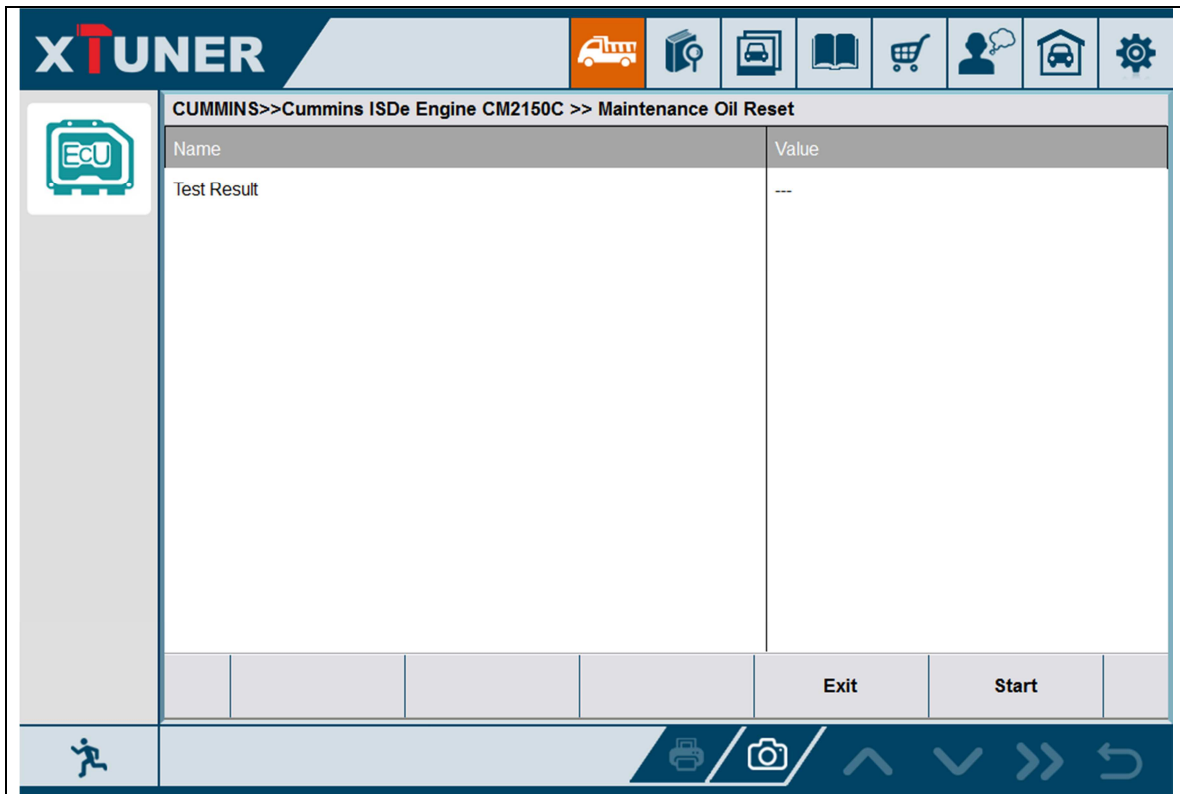
CUMMINS>>Cummins ISDe Engine CM2150C >> Component action test >> Four Cylinder Cutoff Test >> Cylinder 1

Name	Value
Test Result	Start

Exit Reset Start

⏏ 📷 ⏪ ⏩ ↶ ↷

4.8.7 Maintenance Oil Reset



4.8 Screenshot

Captures, saves and prints screenshots anytime and anywhere.

CUMMINS>>Cummins ISDe Engine CM2150C >> Read Fault Codes

DTC	Description	Status
1117	Power Lost without Ignition Off - Data Erratic, Intermittent, or Incorrect	Present
0272	High Fuel Pressure Solenoid Valve Circuit - Voltage Above Normal, or Shorted to High Source	Present
0123	Intake manifold pressure sensor circuit - voltage lower than normal or short to low voltage supply	Present
0451	Injector Metering Rail #1 Pressure Sensor Circuit - Voltage Above Normal, or Shorted to High Source	Present
0132	Accelerator pedal or lever position sensor circuit - voltage lower than normal or short to low voltage supply	Present
1241	Accelerator Pedal or Lever Position Sensor 2 Circuit - Voltage Below Normal, or Shorted to Low Source	Present

CUMMINS>>Cummins ISDe Engine CM2150C >> Data Stream

Name	Value	Unit
Throttle or horizontal position sensor #2 signal	0.00	
Throttle or horizontal position sensor #2 power supply	50.27	
Accelerator or horizontal position sensor signal	0.00	
Accelerator or horizontal position sensor power supply	50.27	
Amber color warning lamp status	Open	
Anti-theft Status	Not locked	
Battery voltage	11.38	
Brake pedal position switch	The Next Step	
Oil gauge pressure	1200.00	
Oil gauge pressure	1200.00	
Calibration software group	6401	
Clutch pedal position switch	Release	

Record Play Wave Cancel

4.9 Print

Prints out the recorded data.

XTUNER CUMMINS>>Cummins ISDe Engine CM2150C >> Data Stream

Name	Value	Unit
Throttle or horizontal position sensor #2 signal	0.00	
Throttle or horizontal position sensor #2 power supply	50.27	
Accelerator or horizontal position sensor signal	0.00	
Accelerator or horizontal position sensor power supply	50.27	
Amber color warning lamp status	Open	
Anti-theft Status	Not locked	
Battery voltage	11.38	
Brake pedal position switch	The Next Step	
Oil gauge pressure	1200.00	
Oil gauge pressure	1200.00	
Calibration software group	6401	
Clutch pedal position switch	Release	

Record Play Wave Cancel

Print Camera Up Down Left Right

XTUNER CUMMINS>>Cummins ISDe Engine CM2150C >> Data Stream

Name	Value	Unit
Throttle or horizontal position sensor #2 signal	0.00	
Throttle or horizontal position sensor #2 power supply	50.27	
Accelerator or horizontal position sensor signal	0.00	
Accelerator or horizontal position sensor power supply	50.27	
Amber color warning lamp status	Open	
Anti-theft Status	Not locked	
Battery voltage	11.38	
Brake pedal position switch	The Next Step	
Oil gauge pressure	1200.00	
Oil gauge pressure	1200.00	
Calibration software group	6401	
Clutch pedal position switch	Release	

Record Play Wave Cancel

Print Camera Up Down Left Right

打印

Printer: Microsoft Print to PDF

Name: Microsoft Print to PDF

Status: Ready

Type: Microsoft Print To PDF

Where: PORTPROMPT:

Comment:

Print range:

All

Pages from: to:

Selection

Copies:

Number of copies: 1

Collate

OK Cancel

Press "OK" to print the test report, as below:

XTUNER

★ Company name: TDIntel
🏠 Address: No.505,Building 2,West Area,MingQi Technical Park,Lishan Road, Nashan
☎ Tel: +86-(0)755-26407749
📠 Fax: +86-(0)755-26407749
✉ Email: service@tdintel.com

Date: 2016-12-22 17:35:20
Vehicle: CUMMINS

Path: CUMMINS / Cummins ISDe Engine CM2150C / Data List / All Data

Live Data

Name	Value	Unit
Accelerator Pedal or Level Position Sensor # 2 Signal Voltage	0.00	V
Accelerator Pedal or Level Position Sensor # 2 Supply Voltage	50.27	V
Accelerator Pedal or Level Position Sensor Signal Voltage	0.00	V
Accelerator Pedal or Level Position Sensor Supply Voltage	50.27	V
Amber Warning Lamp Status	Open	
Anti-theft Status	Not locked	
Battery Voltage	11.44	V
Brake Pedal Position Switch	The Next Step	
Calibration Software Phase	6401	
Clutch Pedal Position Switch	Release	
Cruise Control On/Off Switch	Close	
Cruise Control Accelerate Switch	Close	

4.10 Manual

In manual function, you can read the XTUNER-T1 quick guide and the vehicle code coverage.

XTUNER

Product icons: Truck, Document, Car, Book, Shopping cart, User, Home, Gear

Quick Guide

- USER MANUAL**
 - Product Activation
 - PRODUCT_ACTIVATION
 - Settings
 - SETTINGS
 - Online Store
 - ONLINE_STORE
 - DTC Query
 - DTC_QUERY
 - User Management
 - USER_MANAGEMENT
 - Feedback
 - FEEDBACK
 - Data Management
 - DATA_MANAGEMENT

Code coverage

Navigation icons: Run, Print, Camera, Up, Down, Right, Refresh

XTUNER

PRODUCT ACTIVATION

At the first time enter the Online store to download the diagnostic APP, you have to activation your XTUNER-T1. Please follow the instruction below.

Run the XTUNER-T1 APP, keep your laptop or PAD connecting the internet.



Please click "Online store".

4.11 Diagnose function list



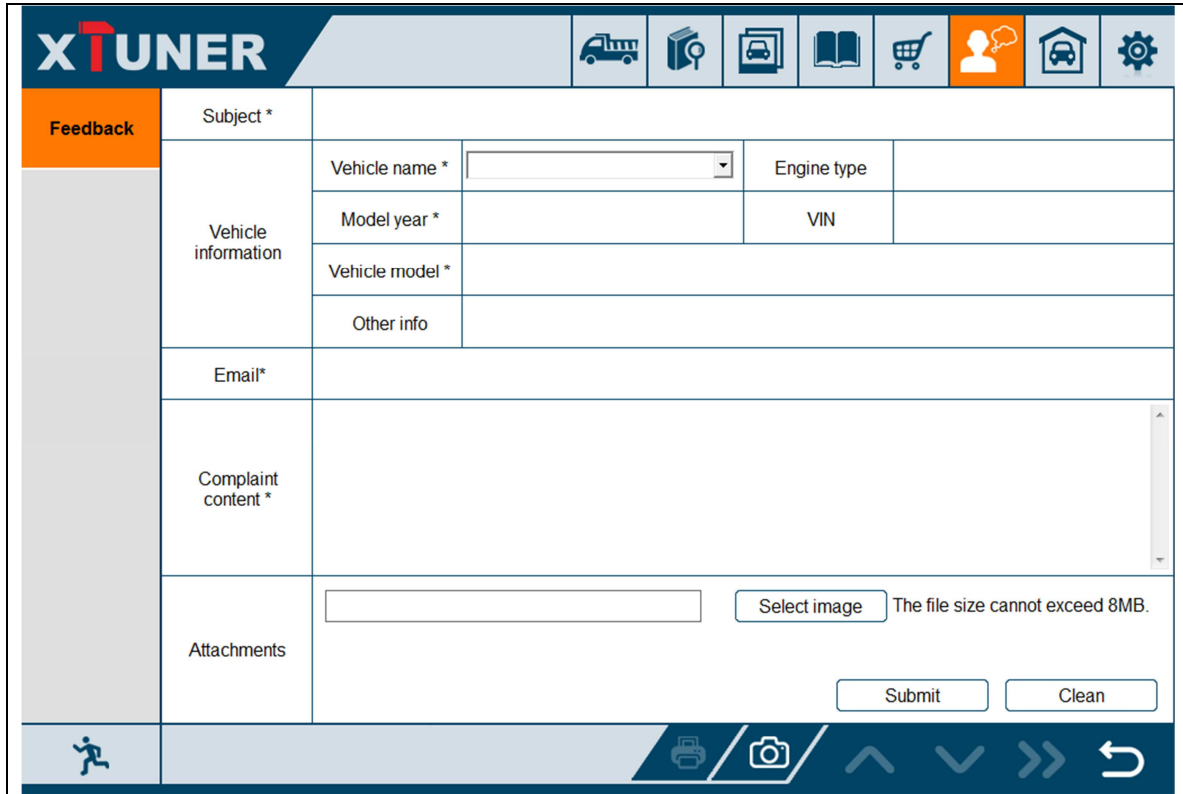
Press "Detail" button

HD-IVECO_EN.pdf - 1/2 (100 dpi)

VEHICLE INFORMATION			FUNCTION					
Model	Exhaustion Standard	System	ECU INFO	DTC	DTC Freeze	Data List	Actuations	Spec. Func.
Daily	Euro-2/3	ENGINE	X	X		X	X	New immobilizer ECU
EuroCargo	Euro-2/3	ENGINE	X	X		X	X	
EuroCargo	Euro 4/5/EEV	ENGINE	X	X		X	X	
EuroCargo	Euro 4/5/EEV	MULTIPLEXER	X	X		X		
EuroCargo	Others	ENGINE	X	X		X	X	
Eurocargo Eu 6	Euro 6	ENGINE	X	X		X	X	
EuroCargo Restyling	Others	ENGINE	X	X		X	X	
EuroCargo Restyling Eu 4/Eu 5/EEV	Others	ENGINE	X	X		X	X	
Stralis	Euro 3	ENGINE				X		
Stralis	Euro 3	BRAKING SYSTEMS	X	X		X		
Stralis	Euro 3	SUSPENSIONS	X	X		X		
Stralis	Euro 3	MULTIPLEXER	X	X		X		
Stralis	Euro 4/5/EEV	ENGINE	X	X		X	X	
Stralis	Euro 4/5/EEV	BRAKING SYSTEMS	X	X		X		
Stralis	Euro 4/5/EEV	SUSPENSIONS	X	X		X		
Stralis	Euro 4/5/EEV	MULTIPLEXER	X	X		X		
Stralis	Euro 6	ENGINE	X	X		X	X	
Trakker	Euro-2/3	ENGINE	X	X		X		
Trakker	Euro-2/3	SUSPENSIONS	X	X		X		
Trakker	Euro-2/3	MULTIPLEXER	X	X		X		
Trakker	Euro-2/3	DASHBOARD	X	X		X		

4.12 Feedback

The information of diagnostic software problems can be uploaded to the manufacture by this function. It helps the engineers to fix the bugs quickly.



Feedback	
Subject *	<input type="text"/>
Vehicle information	Vehicle name * <input type="text"/>
	Engine type <input type="text"/>
	Model year * <input type="text"/>
	VIN <input type="text"/>
Vehicle model *	<input type="text"/>
Other info	<input type="text"/>
Email*	<input type="text"/>
Complaint content *	<input type="text"/>
Attachments	<input type="text"/> <input type="button" value="Select image"/> <small>The file size cannot exceed 8MB.</small>
<input type="button" value="Submit"/> <input type="button" value="Clean"/>	

NOTE: With * information is required; the attachments size cannot exceed 8MB.

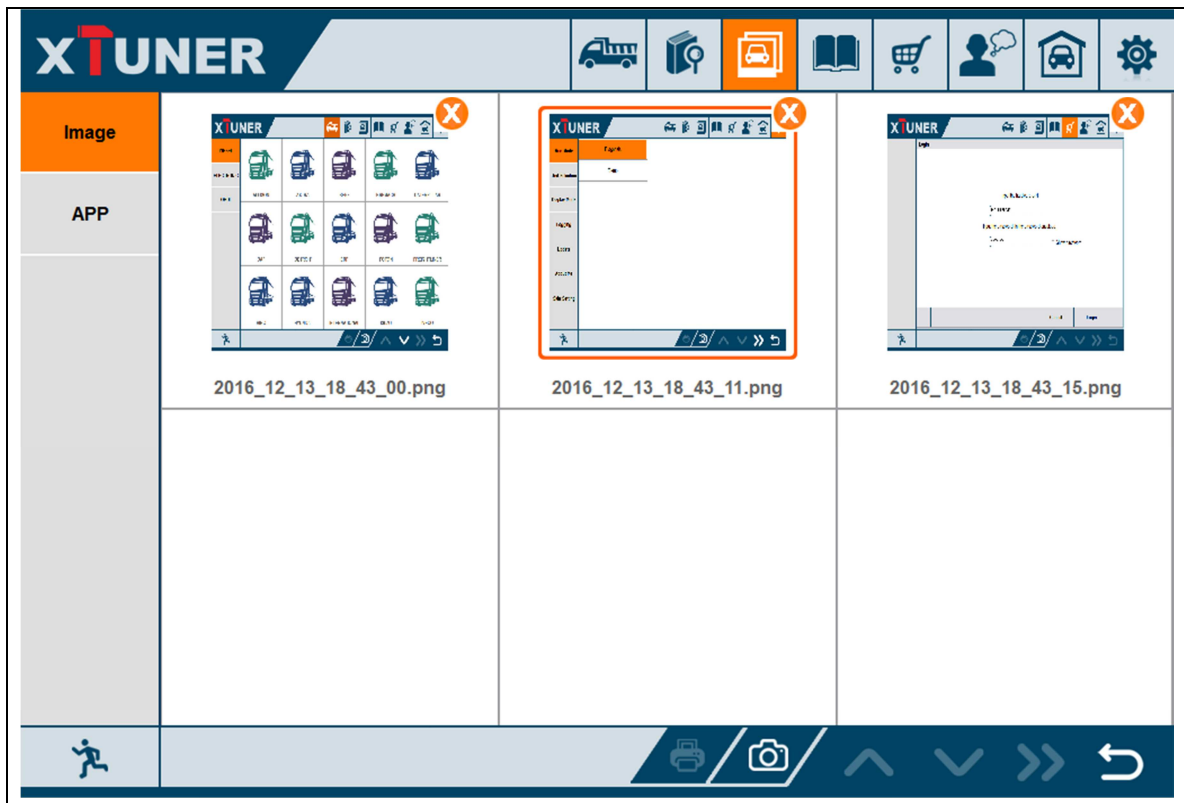
4.13 Data Management

4.13.1 Image management

Here you can browse or delete the pictures.

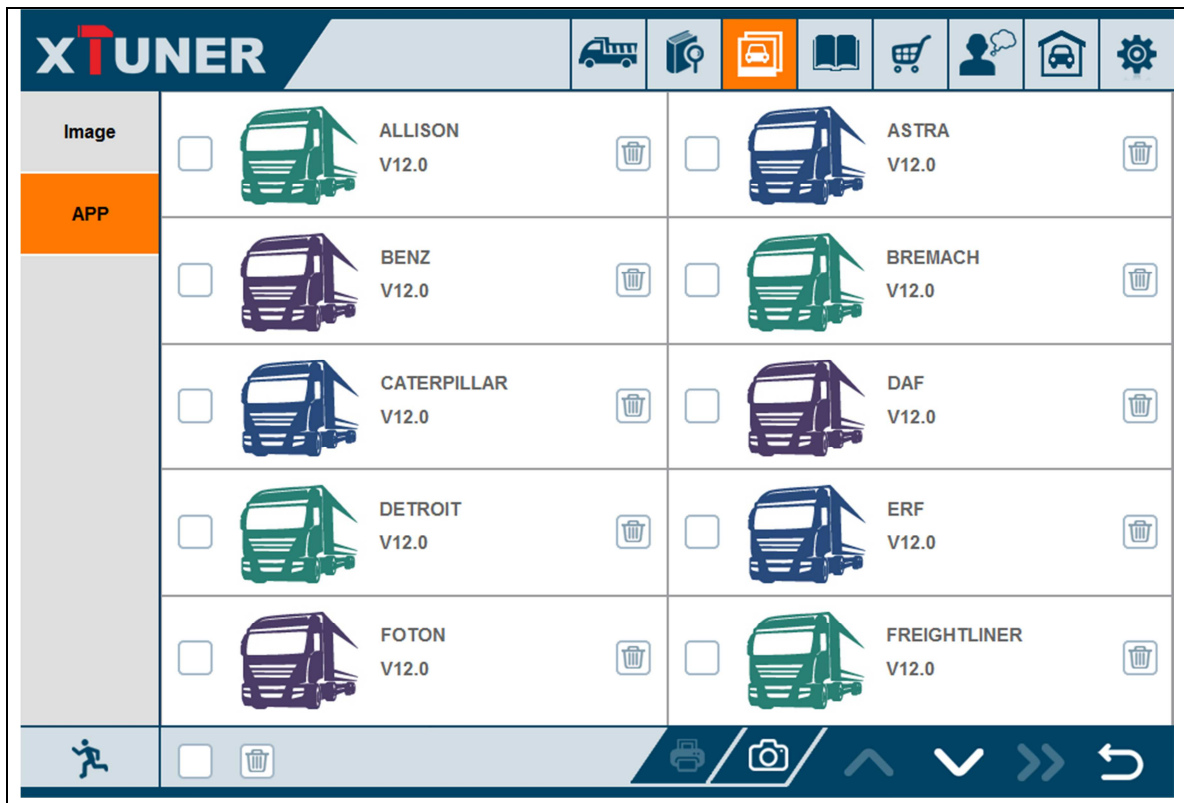
Click the image to browse the picture.

Click the “X” symbol to delete the image.



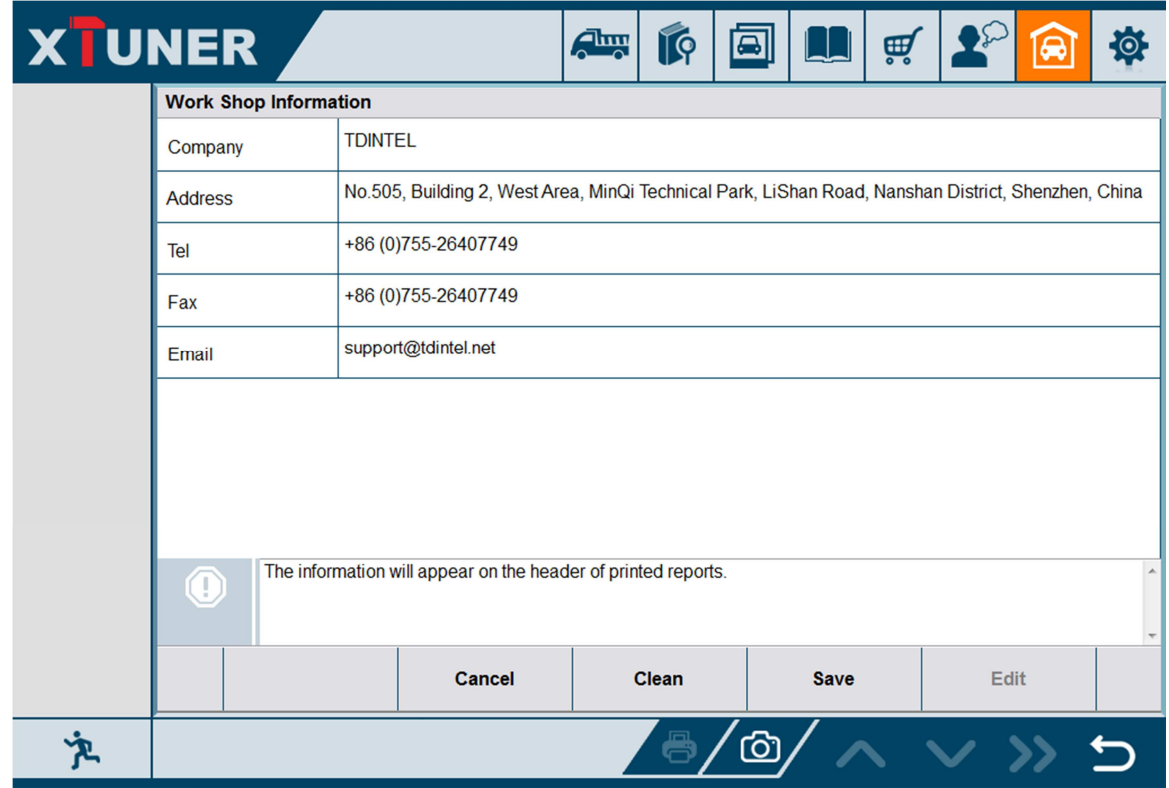
4.13.2 APP management

Users can delete the diagnostic software here, one by one or all-selected delete.



4.14 User Management

Input workshop information, and save the information.



Work Shop Information	
Company	TDINTEL
Address	No.505, Building 2, West Area, MinQi Technical Park, LiShan Road, Nanshan District, Shenzhen, China
Tel	+86 (0)755-26407749
Fax	+86 (0)755-26407749
Email	support@tdintel.net
The information will appear on the header of printed reports.	
Cancel Clean Save Edit	

5. Products website

Please focus on our website www.tdintel.com for the updating information and other news.

6. Warranty

XTUNER-T1 software is free updating within 1 year from the date of product activation.