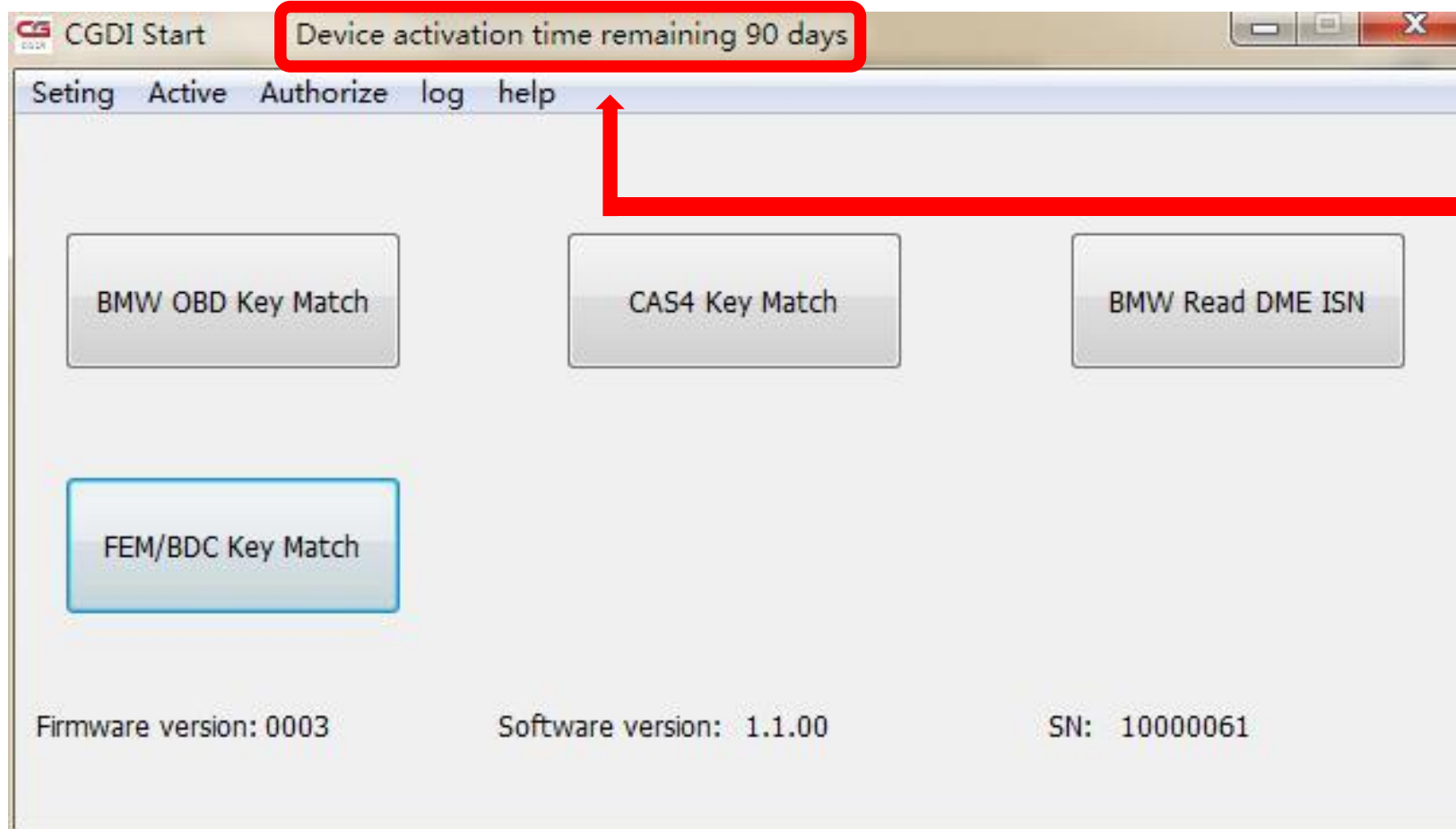


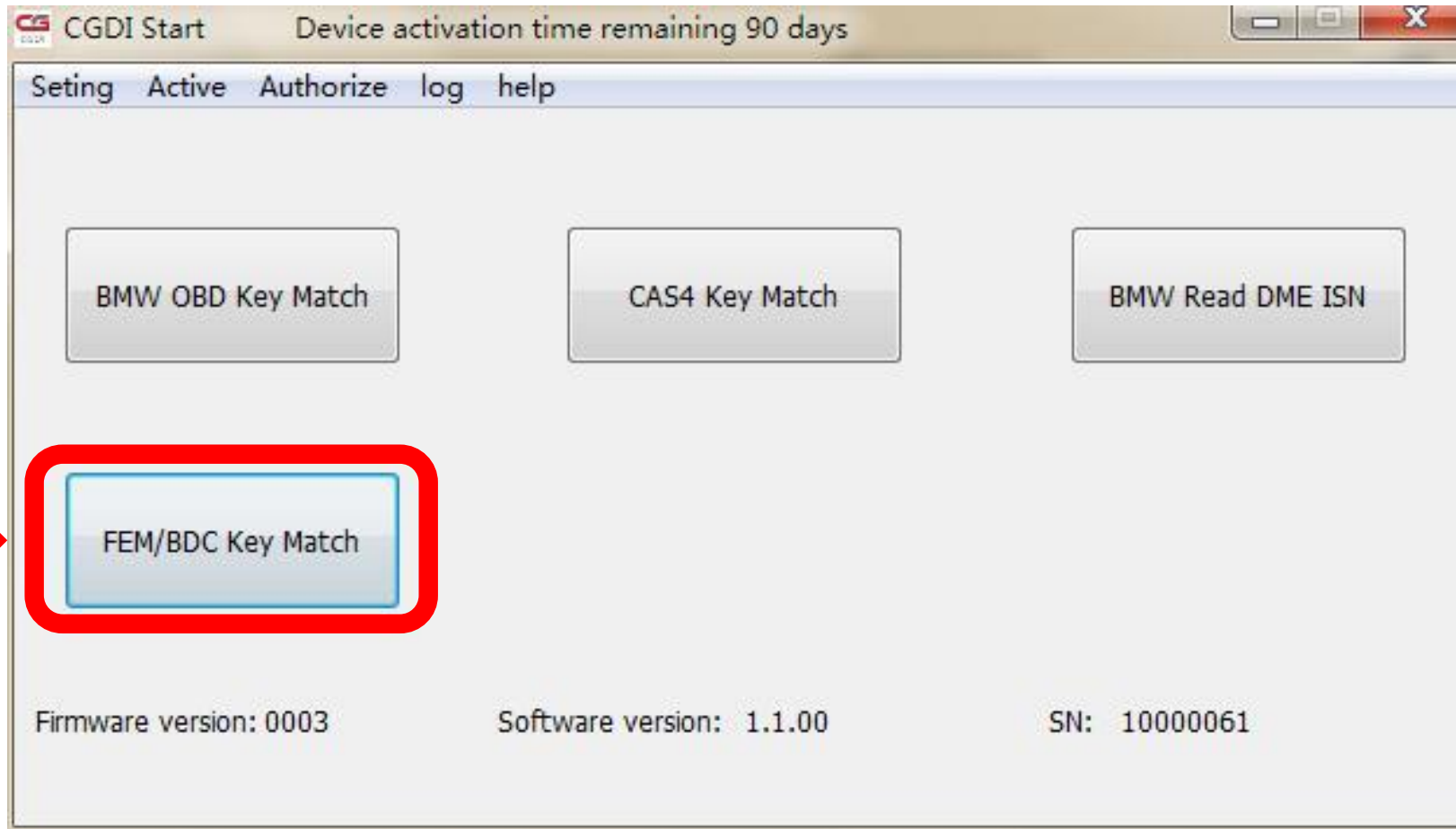


CGDI

**Authorization FEM\BDC
operation instruction**

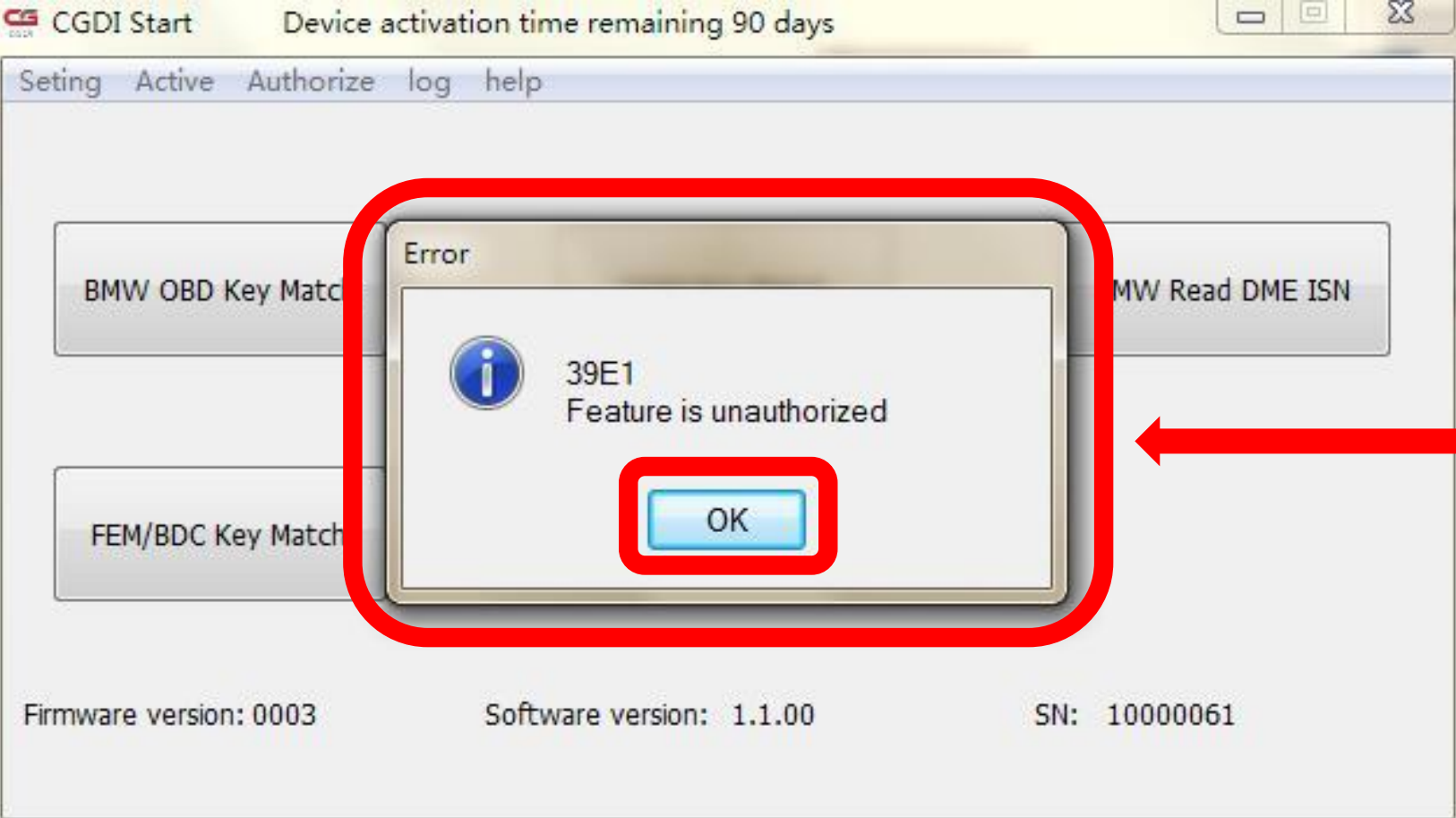
Pls be attention : Can authorize other functions after devices activated ! ! !

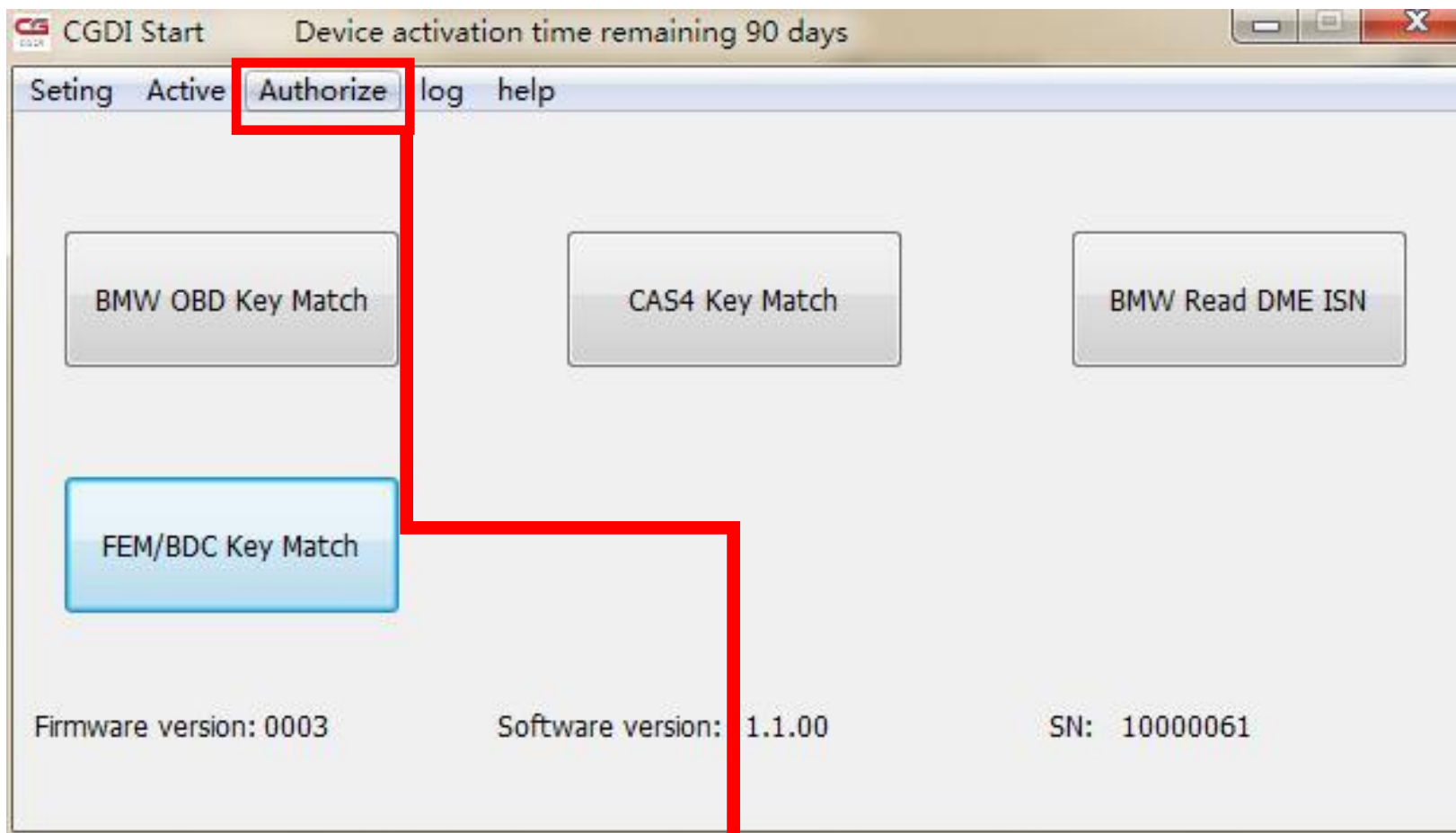




after open software, click "FEM/BDC Key Match"

show“Feature is unauthorized”, its mean the function not active yet
click”confirm”to contact manufacturer

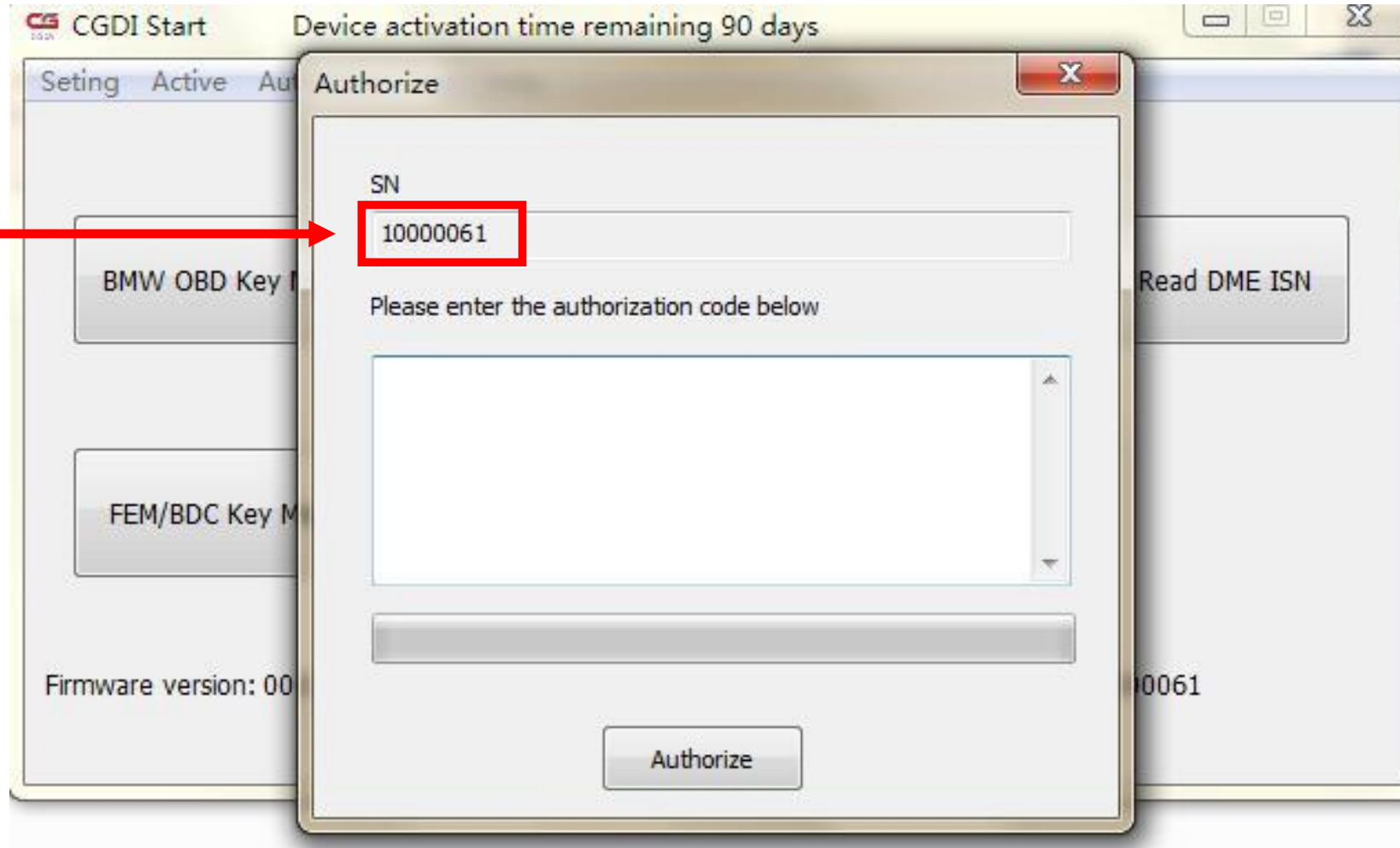




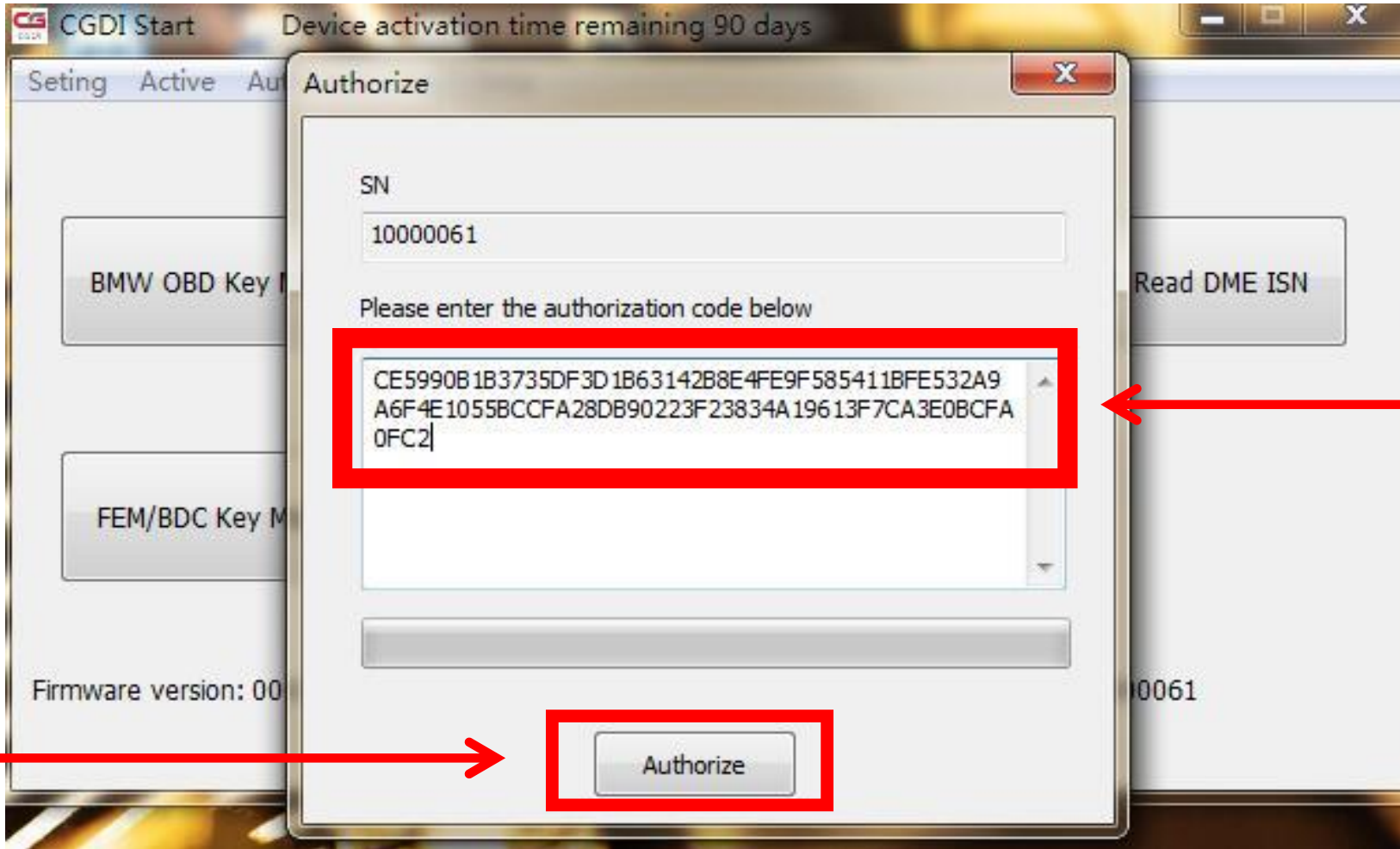
seletc“Authorize”,click to enter

copy this SN code and send to seller

Please do not close this interface

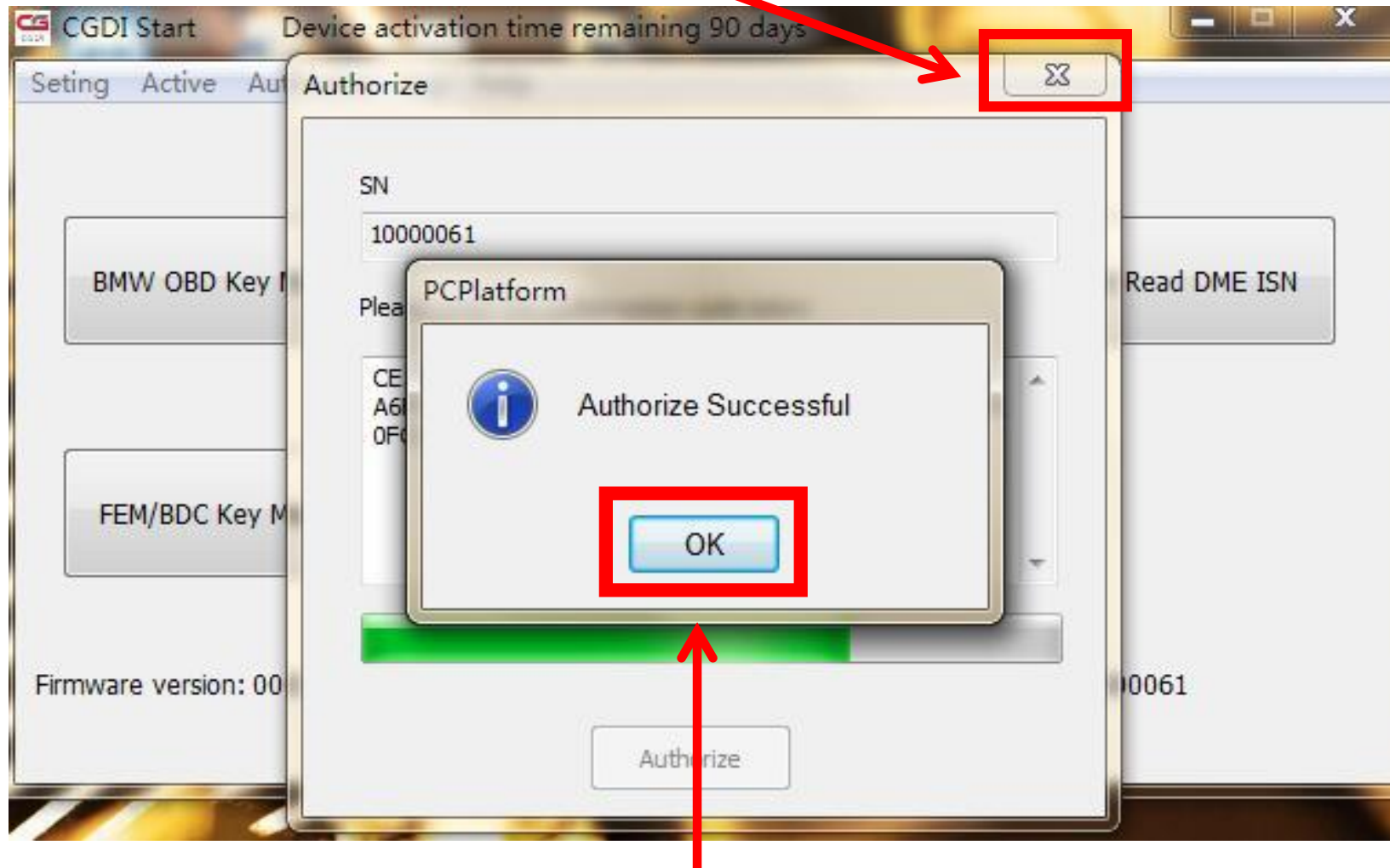


1. enter authoized code get from supplier

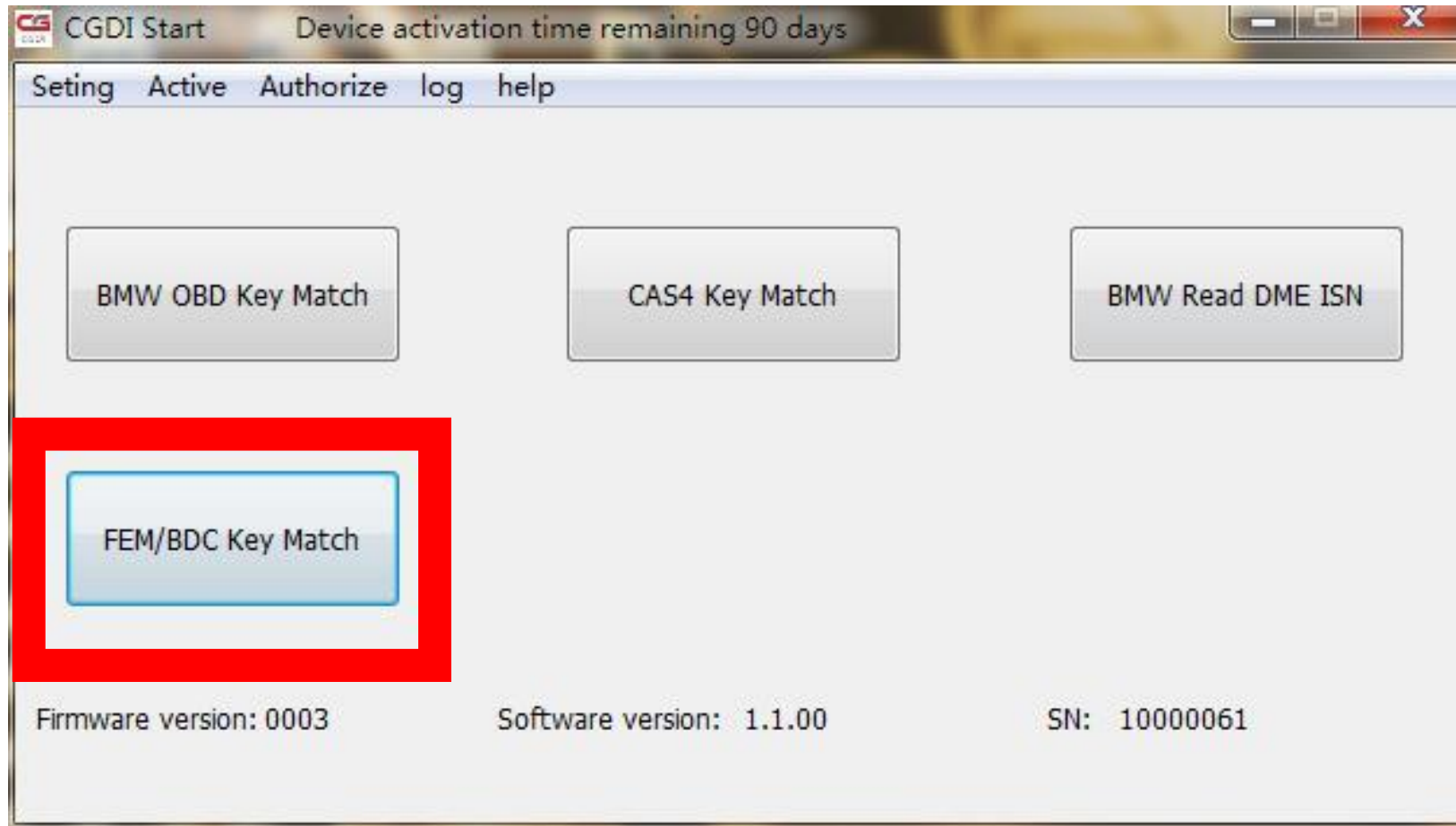


2. finished entering, click "Authorize"

2.click“×”, take Out of this interface



1.show“Authorze Successful”, click“OK”



restart software, select "FEM/BDC Key Match", click "enter"

SVK

[Empty text area for SVK]

KeyInfo

<input type="radio"/> Key1	<input type="text"/>	<input type="text"/>
<input type="radio"/> Key2	<input type="text"/>	<input type="text"/>
<input type="radio"/> Key3	<input type="text"/>	<input type="text"/>
<input type="radio"/> Key4	<input type="text"/>	<input type="text"/>
<input type="radio"/> Key5	<input type="text"/>	<input type="text"/>
<input type="radio"/> Key6	<input type="text"/>	<input type="text"/>
<input type="radio"/> Key7	<input type="text"/>	<input type="text"/>
<input type="radio"/> Key8	<input type="text"/>	<input type="text"/>
<input type="radio"/> Key9	<input type="text"/>	<input type="text"/>
<input type="radio"/> Key10	<input type="text"/>	<input type="text"/>
<input type="radio"/> Key11	<input type="text"/>	<input type="text"/>
<input type="radio"/> Key12	<input type="text"/>	<input type="text"/>
<input type="radio"/> Key13	<input type="text"/>	<input type="text"/>
<input type="radio"/> Key14	<input type="text"/>	<input type="text"/>
<input type="radio"/> Key16	<input type="text"/>	<input type="text"/>

Generate dealer key

Reset Code

The main interface

ECU Info

ECU type

Remote

VIN

OBD is connecting

[Empty area for OBD status]

VIN

Key Number

Key Type

Key Frequency

Key Status

[Progress bar]