

AUROTM

Audi 2014 Q5-A001

TUTORIAL

Trademarks

Auro™ and OtoSys™ are trademarks of Shenzhen HC Tech CO., Ltd., registered in China, the United States and other countries. All other marks are trademarks or registered trademarks of their respective holders.

Copyright Information

No part of this manual may be reproduced, stored in a retrieval system or transmitted, in any form or by any means, electronic, mechanical, photocopying, recording, or otherwise, without the prior written permission of Auro.

Disclaimer of Warranties and Limitation of Liabilities

All information, specifications and illustrations in this manual are based on the latest information available at the time of printing.

Auro reserves the right to make changes at any time without notice. While information of this manual has been carefully checked for accuracy, no guarantee is given for the completeness and correctness of the contents, including but not limited to the product specifications, functions, and illustrations.

Auro DOES NOT promote or encourage ANY illegal activities, all contents provided by Auro is meant for VEHICLE MAINTENANCE only.

Any action you take upon the information from this manual is strictly at your own risk, Auro will not be liable for any direct damages or for any special, incidental, or indirect damages or for any economic consequential damages (including lost profits).

For Services and Support:



www.aurodiag.com



support@eurodiag.com

For technical assistance in all other markets, please contact your local selling agent.

Safety Information

For your own safety and the safety of others, and to prevent damage to the device and vehicles upon which it is used, it is important that the safety instructions presented throughout the product user manual be read and understood by all persons operating or coming into contact with the device.

There are various procedures, techniques, tools, and parts for servicing vehicles, as well as in the skill of the person doing the work. Because of the vast number of test applications and variations in the products that can be tested with this equipment, we cannot possibly anticipate or provide advice or safety messages to cover every circumstance. It is the automotive technician's responsibility to be knowledgeable of the system being tested. It is crucial to use proper service methods and test procedures. It is essential to perform tests in an appropriate and acceptable manner that does not endanger your safety, the safety of others in the work area, the device being used, or the vehicle being tested.

Before using the device, always refer to and follow the safety messages and applicable test procedures provided by the manufacturer of the vehicle or equipment being tested. Use the device only as described in this manual. Read, understand, and follow all safety messages and instructions in this manual.

Safety Messages

Safety messages are provided to help prevent personal injury and equipment damage. All safety messages are introduced by a signal word indicating the hazard level.

DANGER

Indicates an imminently hazardous situation which, if not avoided, will result in death or serious injury to the operator or to bystanders.

WARNING

Indicates a potentially hazardous situation which, if not avoided, could result in death or serious injury to the operator or to bystanders.

Safety Instructions

The safety messages herein cover situations Auro is aware of. Auro cannot know, evaluate or advise you as to all of the possible hazards. You must be certain that any condition or service procedure encountered does not jeopardize your personal safety.

DANGER

When an engine is operating, keep the service area WELL VENTILATED or attach a building exhaust removal system to the engine exhaust system. Engines produce carbon monoxide, an odorless, poisonous gas that causes slower reaction time and can lead to serious personal injury or loss of life.

SAFETY WARNINGS

- Always perform automotive testing in a safe environment.
- Wear safety eye protection that meets ANSI standards.
- Keep clothing, hair, hands, tools, test equipment, etc. away from all moving or hot engine parts.
- Operate the vehicle in a well ventilated work area, for exhaust gases are poisonous.
- Put the transmission in PARK (for automatic transmission) or NEUTRAL (for manual transmission) and make sure the parking brake is engaged.
- Put blocks in front of the drive wheels and never leave the vehicle unattended while testing.
- Be extra cautious when working around the ignition coil, distributor cap, ignition wires and spark plugs. These components create hazardous voltages when the engine is running.
- Keep a fire extinguisher suitable for gasoline, chemical, and electrical fires nearby.
- Do not connect or disconnect any test equipment while the ignition is on or the engine is running.
- Keep the test equipment dry, clean, free from oil, water or grease. Use a mild detergent on a clean cloth to clean the outside of the equipment as necessary.
- Do not drive the vehicle and operate the test equipment at the same time. Any distraction may cause an accident.
- Refer to the service manual for the vehicle being serviced and adhere to all diagnostic procedures and precautions. Failure to do so may result in personal injury or damage to the test equipment.
- To avoid damaging the test equipment or generating false data, make sure the vehicle battery is fully charged and the connection to the vehicle DLC is clean and secure.
- Do not place the test equipment on the distributor of the vehicle. Strong electro-magnetic interference can damage the equipment.

CONTENTS

TRADEMARKS	i
COPYRIGHT INFORMATION	i
DISCLAIMER OF WARRANTIES AND LIMITATION OF LIABILITIES	i
FOR SERVICES AND SUPPORT	i
SAFETY INFORMATION	ii
SAFETY MESSAGES	ii
SAFETY INSTRUCTIONS.....	ii
INTRODUCTION	1
KEY LEARNING VIA SMART MODE	2
KEY LEARNING VIA EXPERT MODE.....	12

Introduction

This manual introduces how to conduct 2014 Audi Q5 key learning with Auro OtoSys IM600 Smart Mode and Expert Mode.

Two options are available when accessing the IMMO function:

- Smart Mode – the IM600 tablet will read the vehicle information and analyze the IMMO part information automatically.
- Expert Mode – user can make selections step by step to locate the IMMO part.

➤ **Procedures before getting started:**

1. Connect the OtoFlash to the vehicle's DLC via the main cable for both communication and power source.
2. Connect the OtoFlash to the tablet via BT pairing, or USB connection.
3. Connect the IM600 tablet to the included UP400 via USB cable.
4. Make sure the user has access to WiFi service.
5. Turn the ignition on, or turn on the hazard lights.

 **NOTE**

Illustrations used in this manual are samples, and the actual testing screens may vary by vehicle. Observe the menu titles and on-screen instructions to make correct selections and operations.

Key Learning via Smart Mode

1. Turn on the IM600 tablet, tap **OtoSys** on the main interface screen, then **IMMO**. A vehicle menu displays and a disclaimer prompts up. Tap **Accept** to continue.



Figure 1 Sample Main Interface

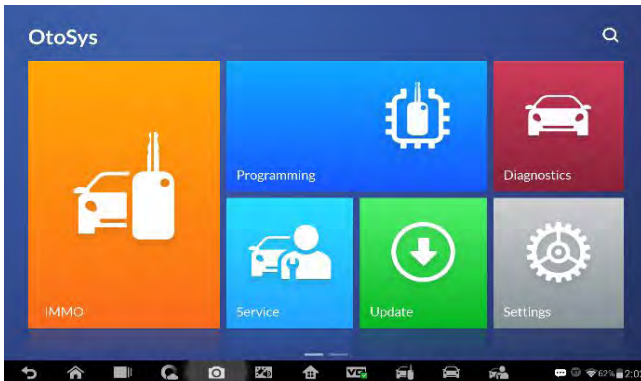


Figure 2 Sample OtoSys Interface

2. Connect the IM600 tablet to WiFi, then go back to the vehicle menu.

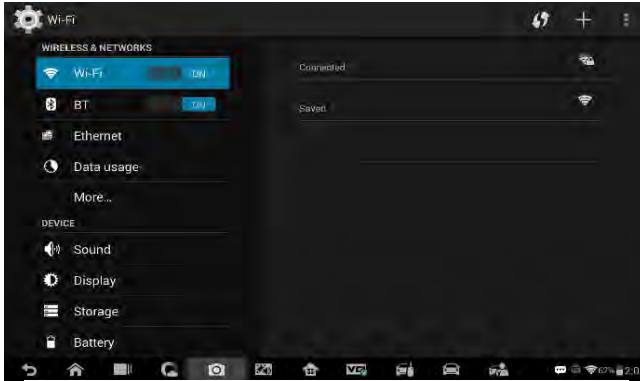


Figure 3 Sample WiFi Connecting Screen

3. Tap **Audi** on the vehicle menu, then tap **Smart Mode**. The IM600 tablet starts to read vehicle information automatically.

NOTE

You can click on the icon near the top-right corner to record the operation data. If you encounter any difficulties, click on the icon again to send us the data and the problem, so that our engineers could help.



Figure 4 Sample Vehicle Menu

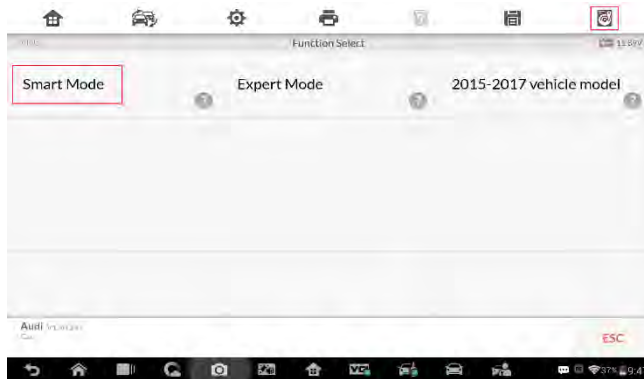


Figure 5 Sample Main Function Select Screen

4. Tap **Yes** on the vehicle information interface. Pay attention to the information interface, tap **OK** to check the present key status of the vehicle.



Figure 6 Sample Vehicle Information Screen

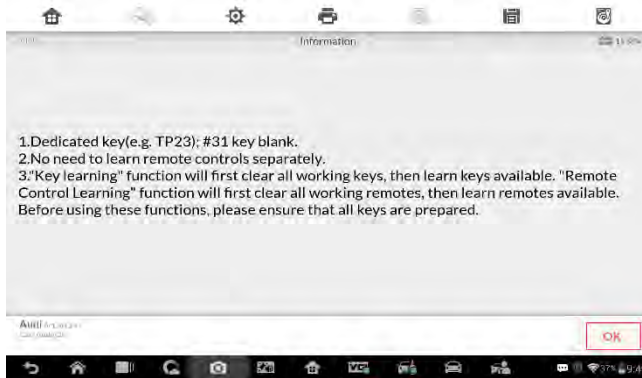


Figure 7 Sample Vehicle Information Screen

5. Check the present key status, if the vehicle has two working keys already, the number should be 2. Tap **ESC** to the Function Select interface.

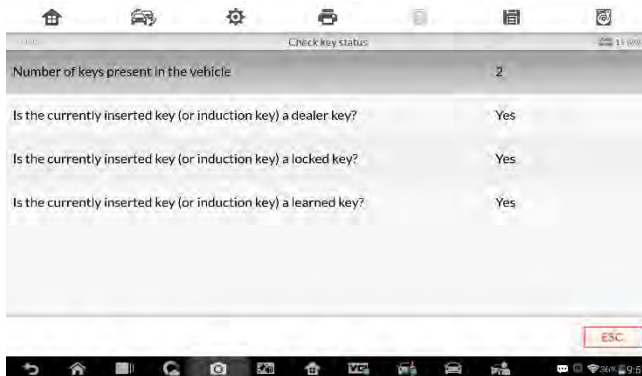


Figure 8 Sample Key Status Screen

6. Tap **Key Learning** on the Function Select interface. Key learning starts automatically.

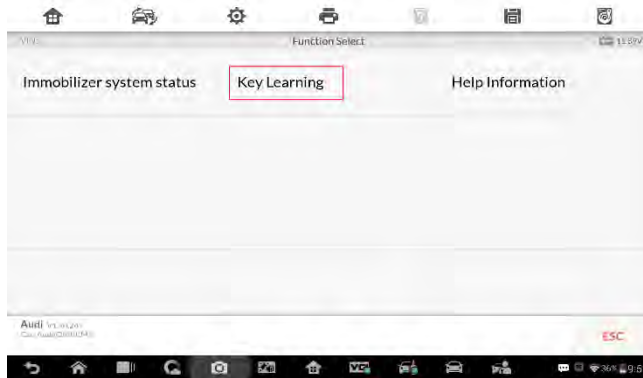


Figure 9 Sample Function Select Screen

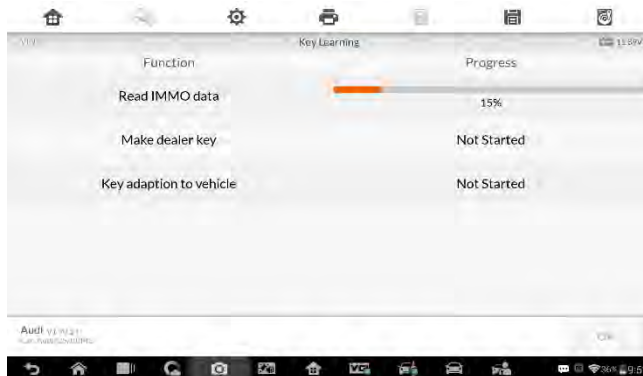


Figure 10 Sample Reading IMMO Data Screen



Figure 11 Sample Complete Reading IMMO Data Screen

7. Proceed as information displayed on the pop-up window to make dealer key(s).

NOTE

- Tap **No** and proceed as information displayed if you've got dealer key(s).
- Put the Blank Keys in the programmer UP400 keyhole one by one if you need to make more than one dealer key.

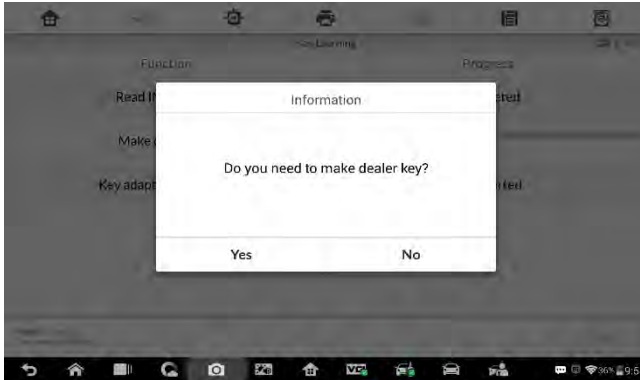


Figure 12 Sample Information Screen

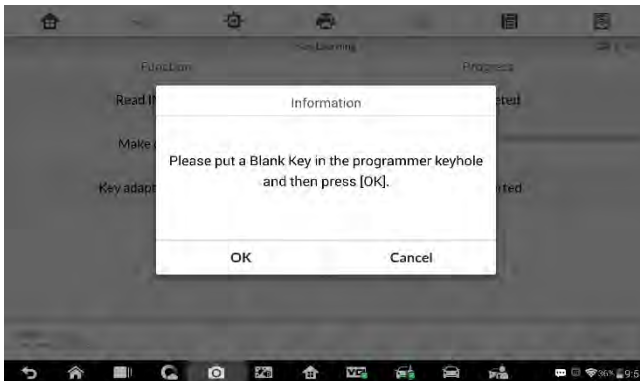


Figure 13 Sample Information Screen



Figure 14 Sample Making Dealer Key Screen

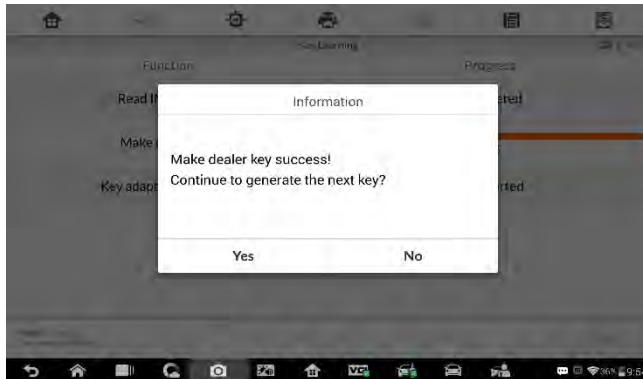


Figure 15 Sample Information Screen

- Key learning procedures start automatically after making dealer key(s) successfully. Select the number of keys that need to be learned. Tap **OK** to proceed.

NOTE

The number should be the sum of existing working keys brought with you and the new keys you need. For example, you've got 2 working keys, 1 blank key needs to be made dealer key, but all 3 keys need to be learned, select 3 here.



Figure 16 Sample Input Screen

9. Proceed for key learning as information displayed on the popup window. Tap **OK** when operation over.

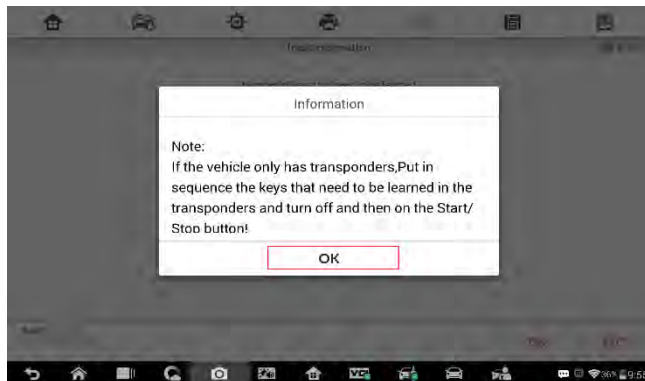


Figure 17 Sample Information Screen

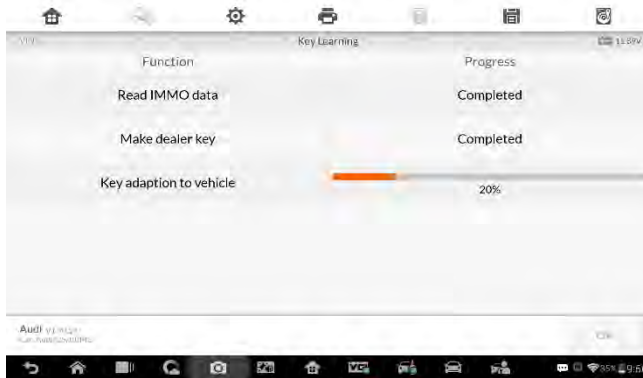


Figure 18 Sample Key Learning Screen

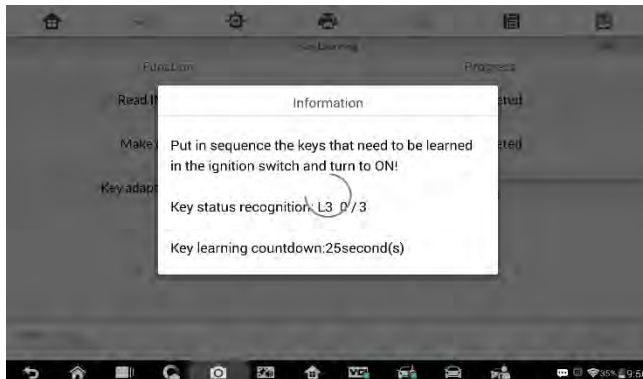


Figure 19 Sample Information Screen

10. Tap **OK** on the pop-up window when key learning completes. The Check key status interface displays again. The number of key present in the vehicle should be the same as the input one in step 8. Key learning via Smart Mode completes.

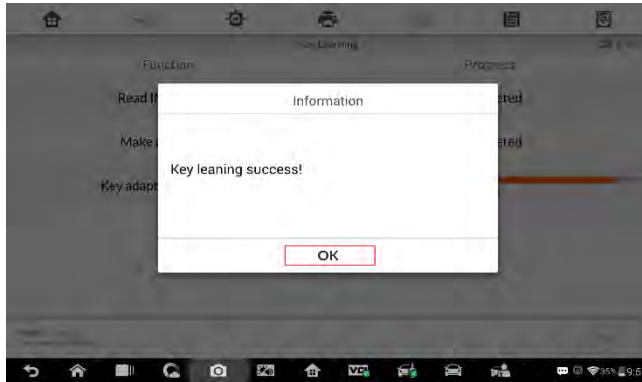


Figure 20 Sample Information Screen



Figure 21 Sample Key Status Screen

Key Learning via Expert Mode

1. Turn on the IM600 tablet, tap **OtoSys** on the main interface screen, then **IMMO**. A vehicle menu displays and a disclaimer prompts up. Tap **Accept** to continue.



Figure 22 Sample Main Interface

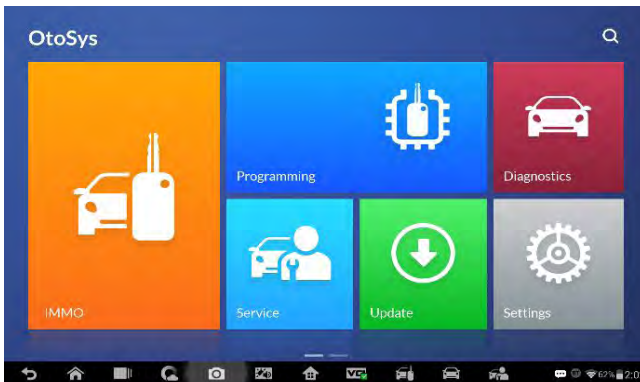


Figure 23 Sample OtoSys Screen

2. Connect the IM600 tablet to WiFi, then go back to the vehicle menu.

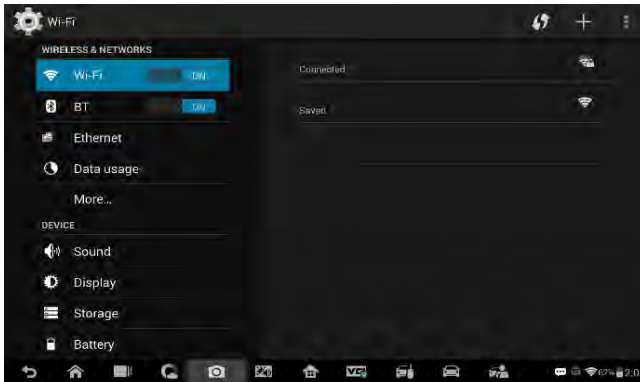


Figure 24 Sample Connect WiFi Screen



Figure 25 Sample Vehicle Menu Screen

3. Tap **Audi > Expert Mode > IMMO V > A4/A5/Q5** on the interfaces display in sequence. The IMMO V Function Select interface displays.

NOTE

You can click on the icon near the top-right corner to record the operation data. If you encounter any difficulties, click on the icon again to send us the data and the problem, so that our engineers could help.

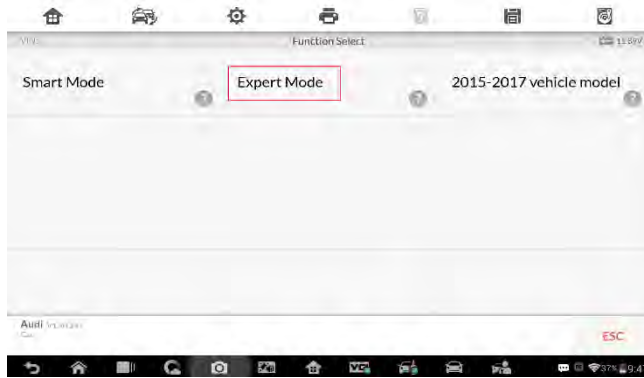


Figure 26 Mode Select Screen

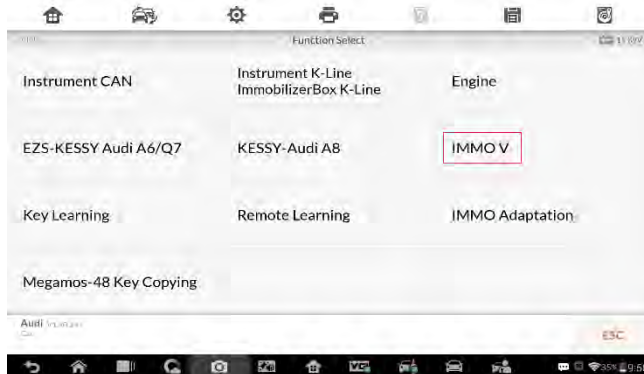


Figure 27 Sample Function Select Screen



Figure 28 Sample Vehicle Model Select Screen

4. Tap **Read IMMO data** on the IMMO V Function Select interface. Pay attention to the Note interface. Proceed as per onscreen information.

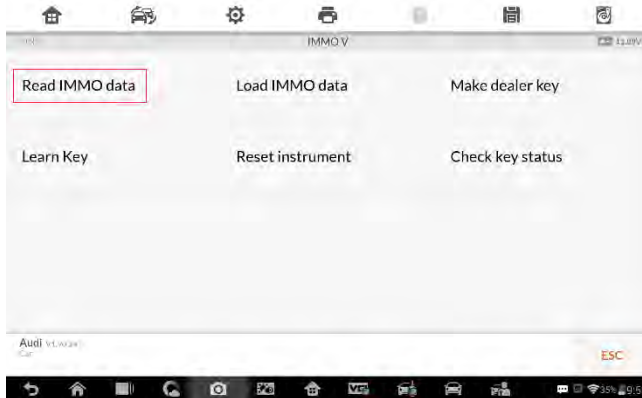


Figure 29 Sample IMMO V Function Select Screen

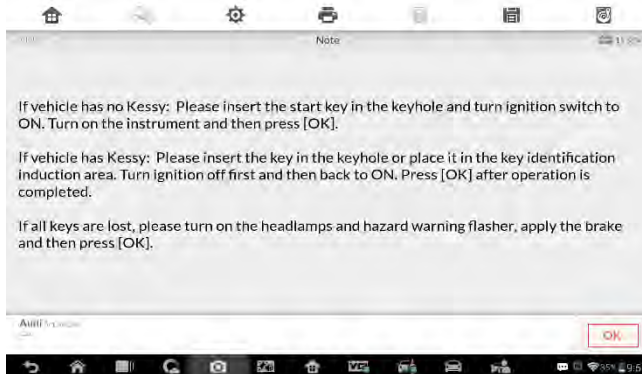


Figure 30 Sample Note Screen

- 4.1 If you have no working key(s), operate as per information displayed. Tap **OK** when operation over. Reading IMMO data starts automatically.



Figure 31 Sample Information Screen



Figure 32 Sample Information Screen

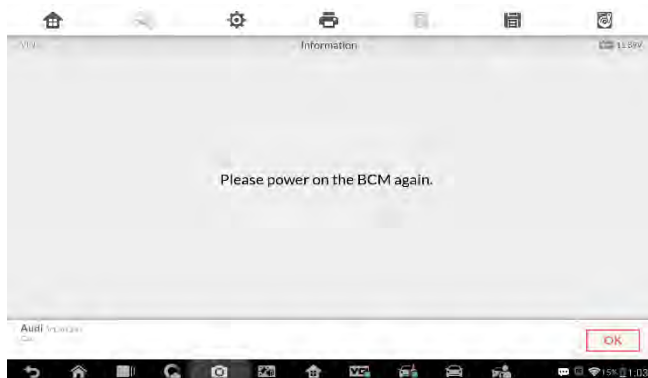


Figure 33 Sample Information Screen

4.2 If you have working key(s) with you, proceed as information displayed on the Note screen. Reading IMMO data starts automatically when operation over.

5. Vehicle anti-theft information displays when reading IMMO data completes. Tap **OK**, go to the IMMO V Operation Select interface.



Figure 34 Sample Vehicle Anti-theft Information Screen

6. Tap **Make dealer key**. Proceed as information displayed. Tap **OK** on the “Make dealer key success” interface, go back to the IMMO V Operation Select interface.

NOTE

Repeat procedures of “Make dealer key” if you want more than one dealer key.

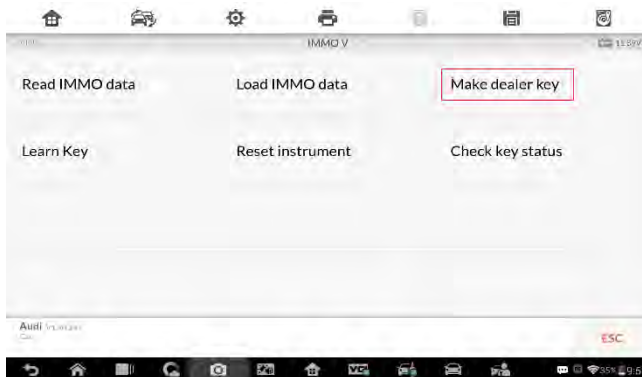


Figure 35 Sample IMMO V Function Select Screen



Figure 36 Sample Information Screen



Figure 37 Sample Communication Status Screen

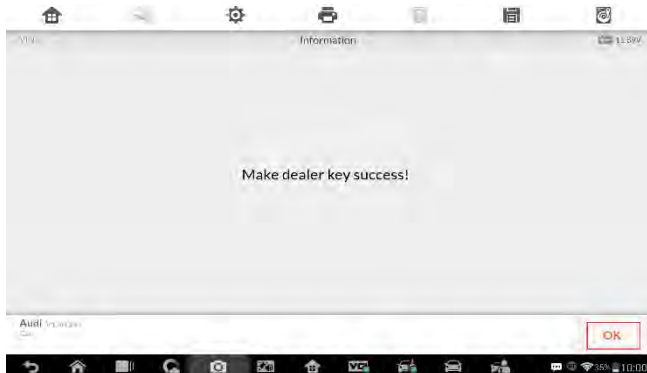


Figure 38 Sample Information Screen

7. Tap **Learn Key** on the IMMO V Operation Select interface. Select the number of keys that need to be learned. Proceed as information displayed.

NOTE

The number should be the sum of existing working keys brought with you and the new keys you need. For example, you've got 2 working keys, 1 blank key needs to be made dealer key, but all 3 keys need to be learned, select 3 here.



Figure 39 Sample IMMO V Function Select Screen

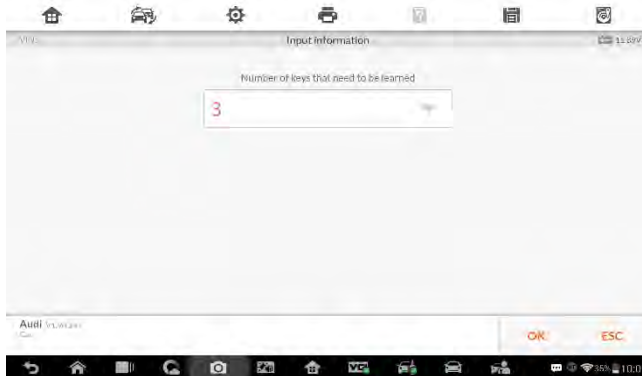


Figure 40 Sample Input Information

8. Proceed for key learning as information displayed on the pop-up windows. Tap **OK** when operations over.

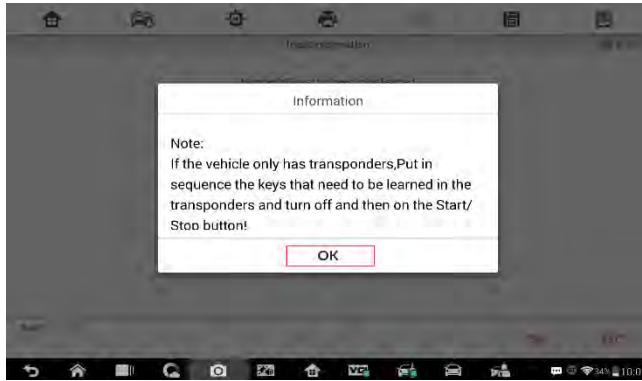


Figure 41 Sample Information Screen

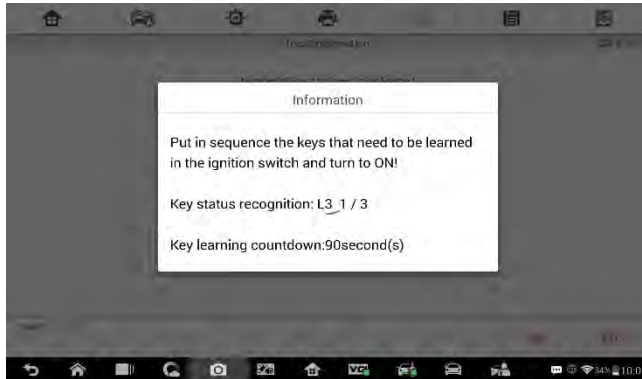


Figure 42 Sample Information Screen

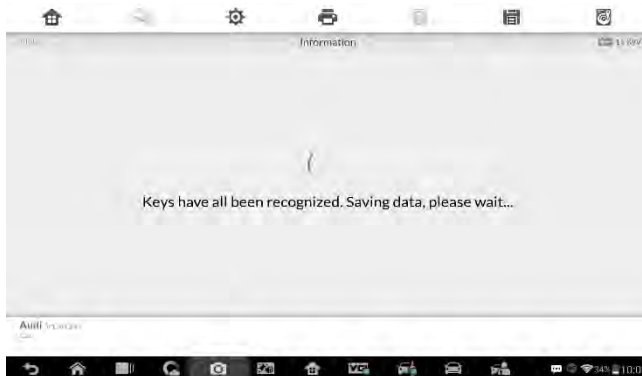


Figure 43 Sample Information Screen

9. Tap **OK** when key learning completes. Go back to the IMMO V Operation Select interface, tap **Check key status**, the Number of keys present in the vehicle should be the same as the one input in step 7. Key learning via Expert Mode completes.



Figure 44 Sample Information Screen

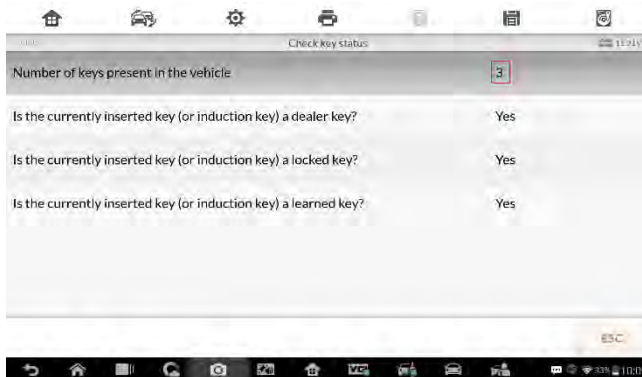


Figure 45 Sample Key Status Screen