

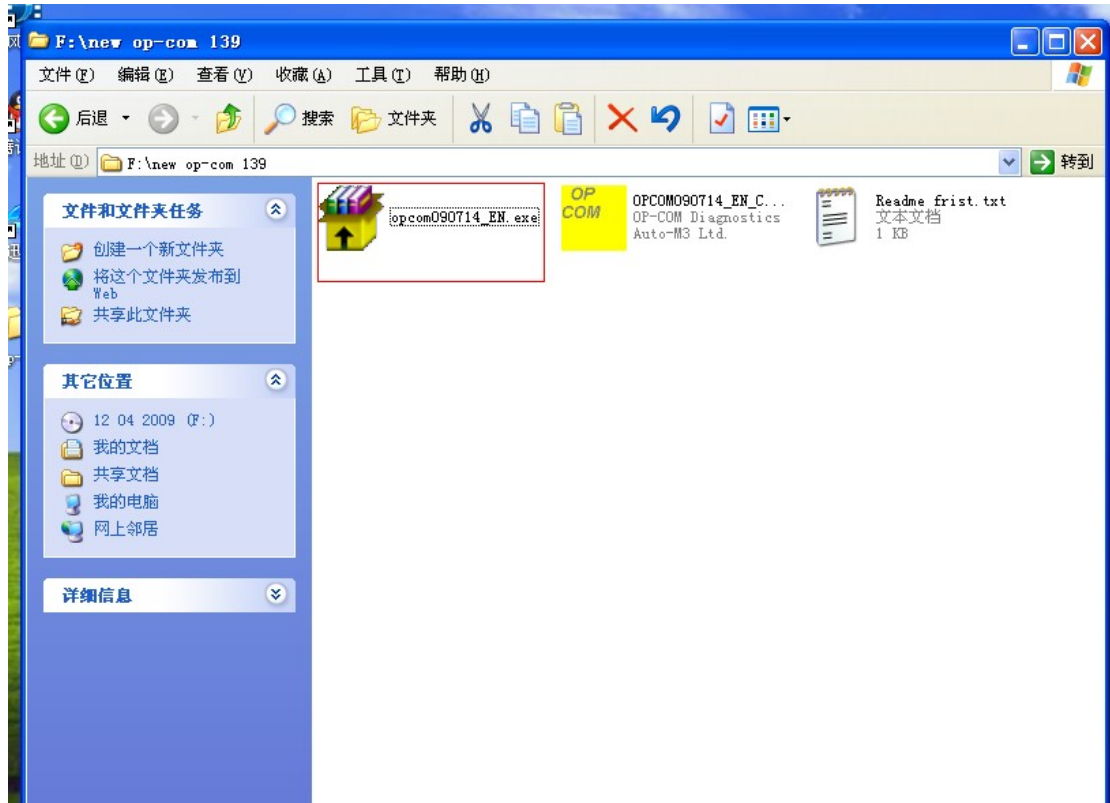
- 1 先在桌面新建一个文件夹【op-com】 Create a folder “op com” on the desk of your computer, see as follows:



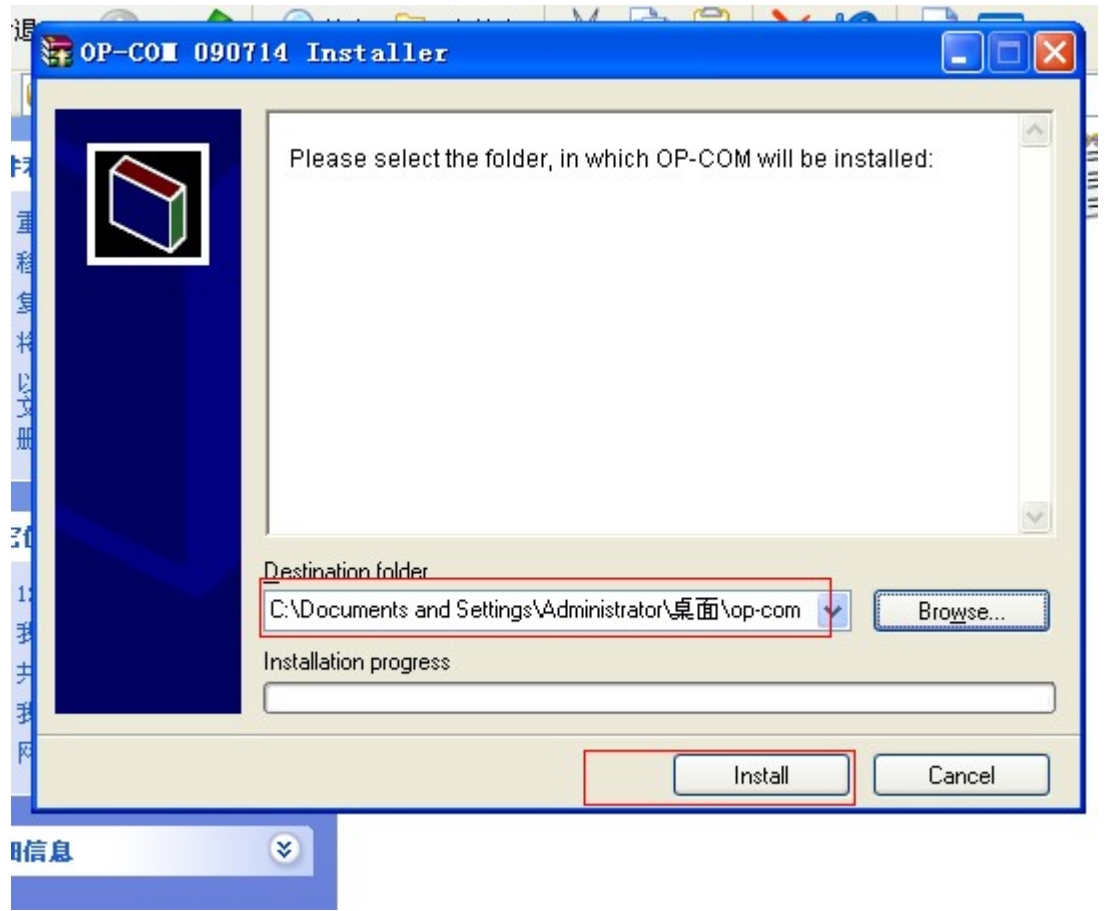
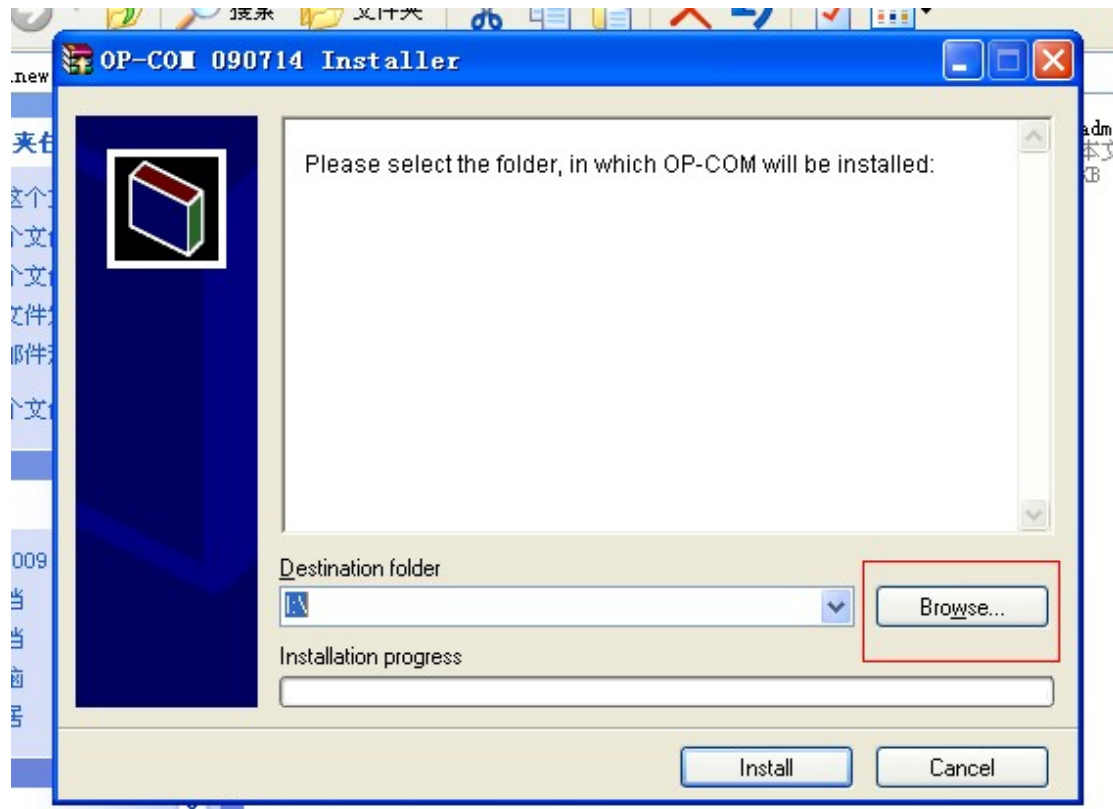
- 2 打开 cd Open the CD



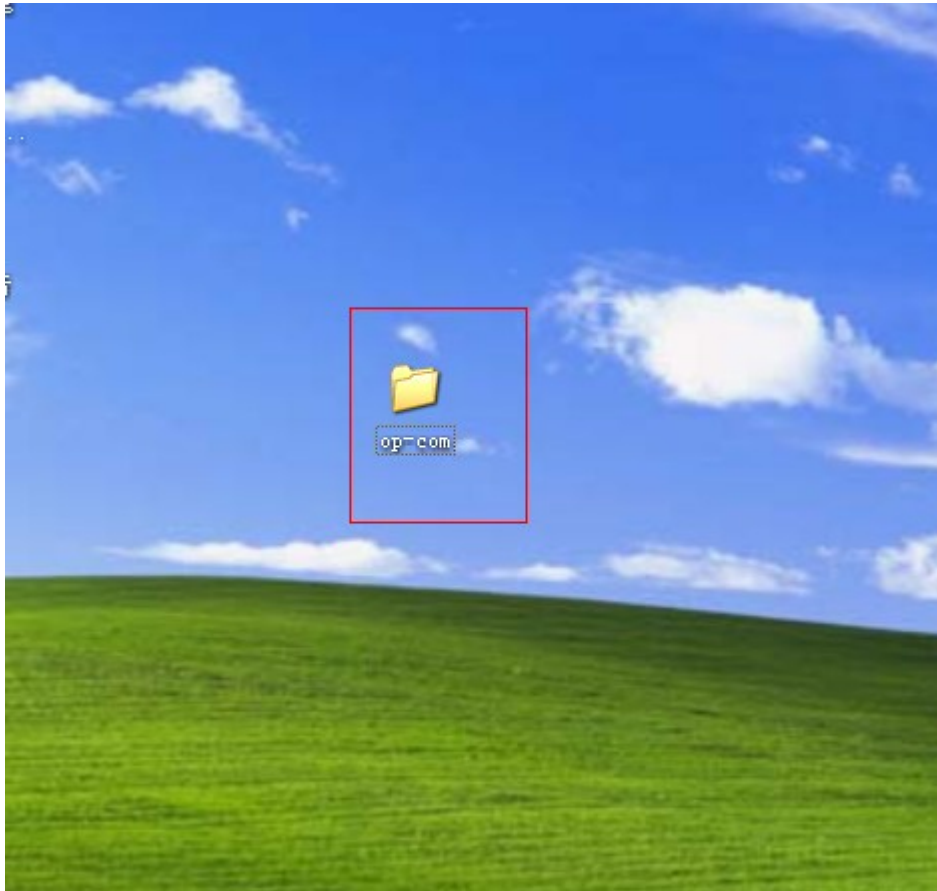
- 3 安装 op-com EN exe Install the “op-com EN exe”

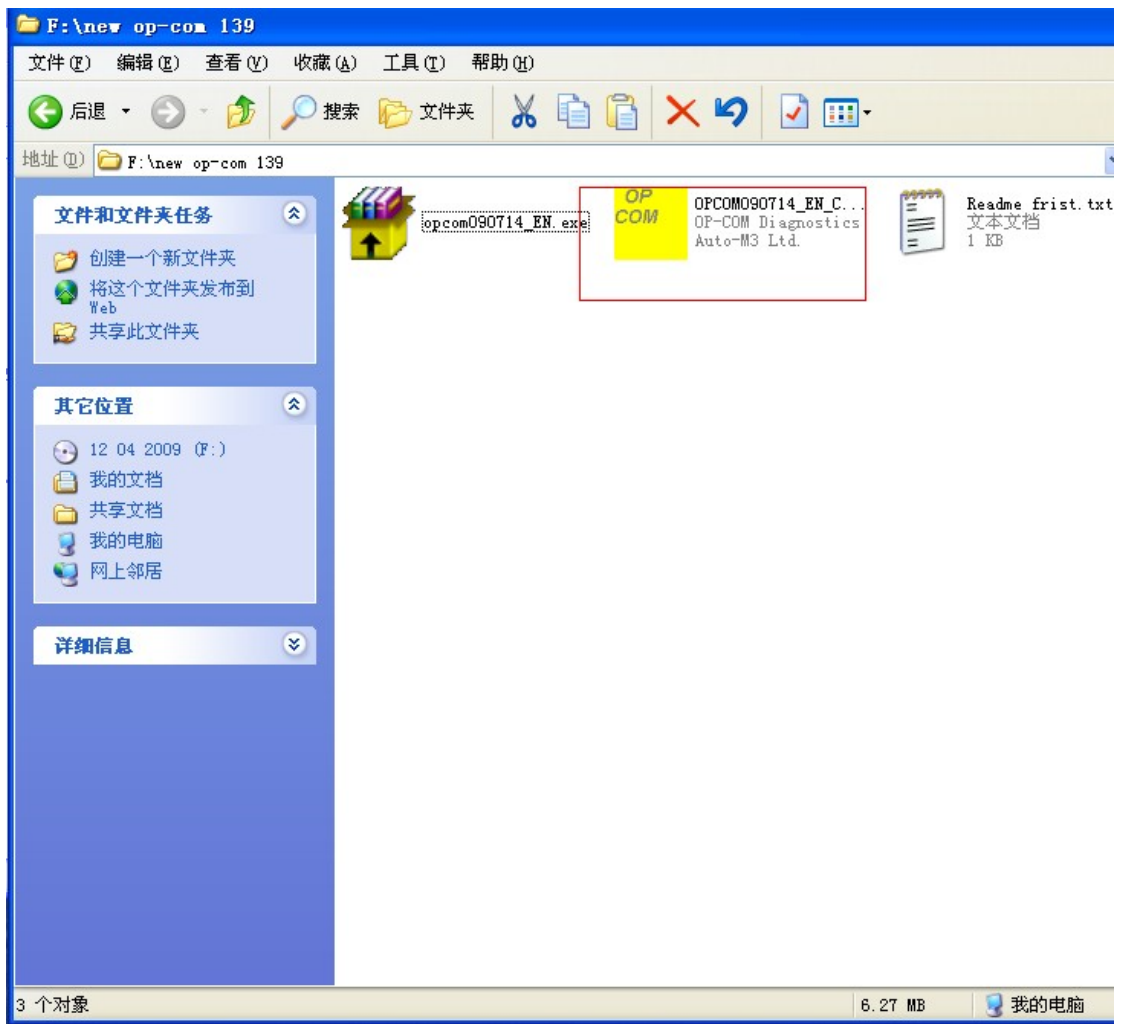


4 安装路径【选择安装在桌面新建的 op-com 文件夹里面】 the route of the installation(Choose to install the software to the op com folder newly created in the desk of your computer)

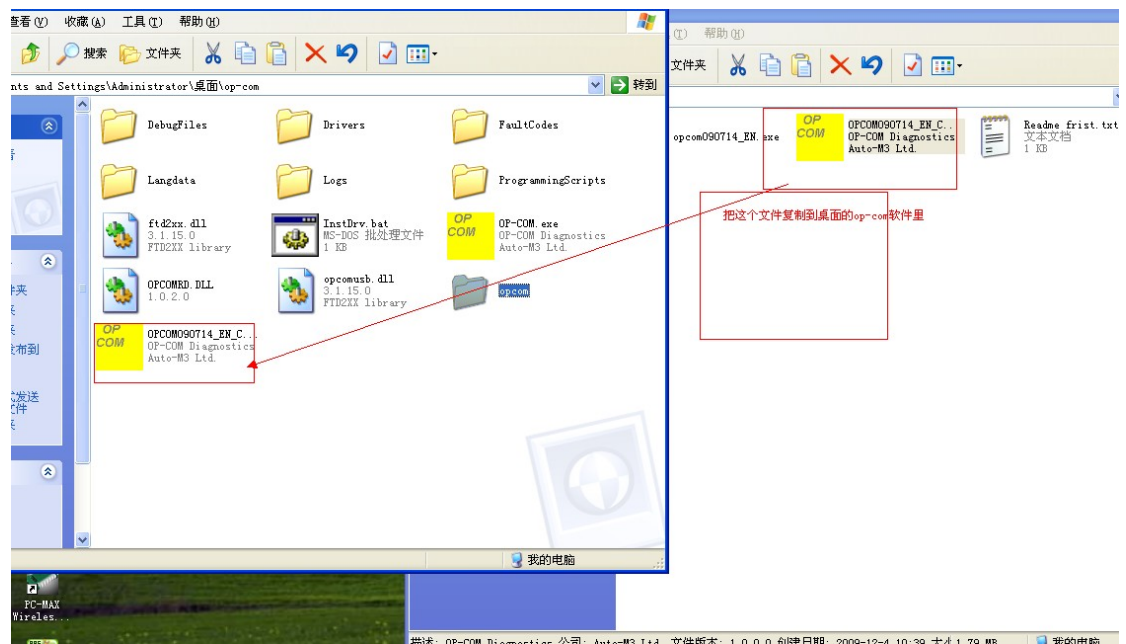


5 打开 op-com 文件夹 Open the op-com folder

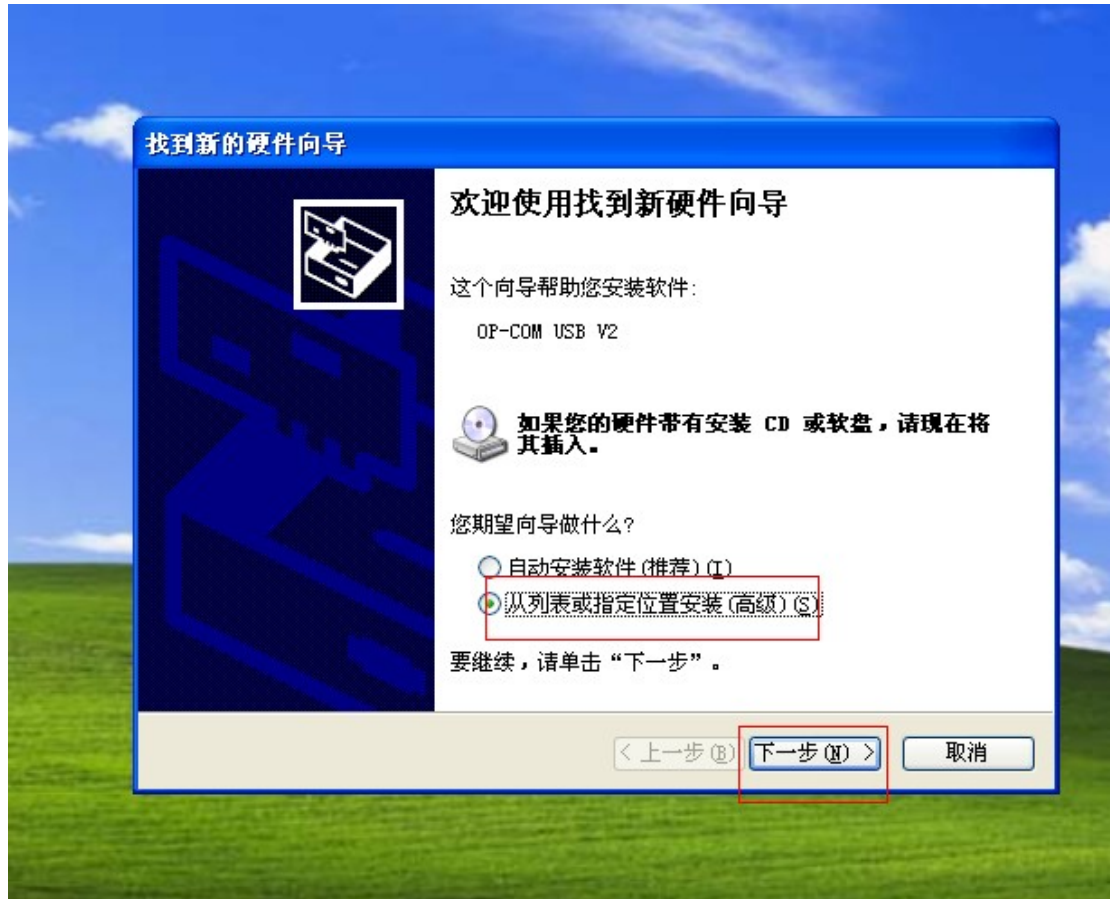




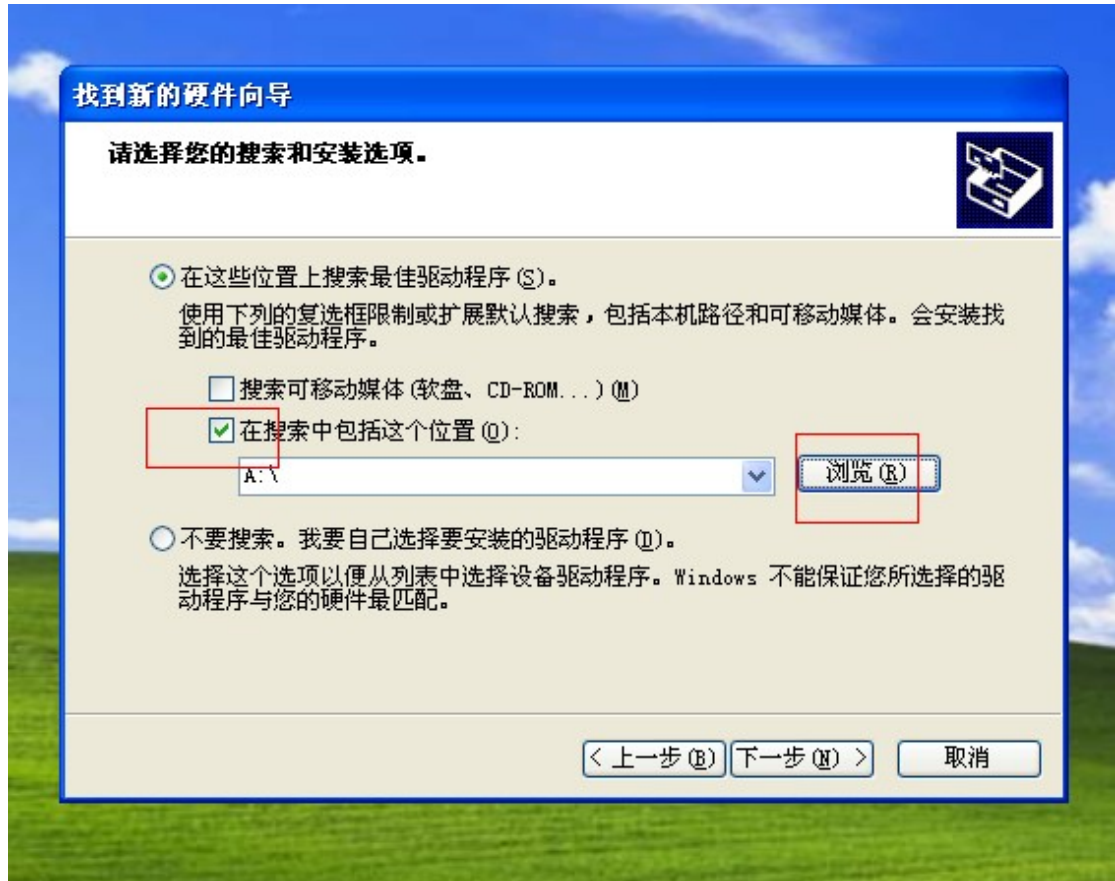
6 把 cd 里的【OPCOM090714_EN_Crack.exe】拷贝到【桌面 op-com 文件夹里】 Copy the 【OPCOM090714_EN_Crack.exe】 on the CD to the op-com folder in the desk of your computer



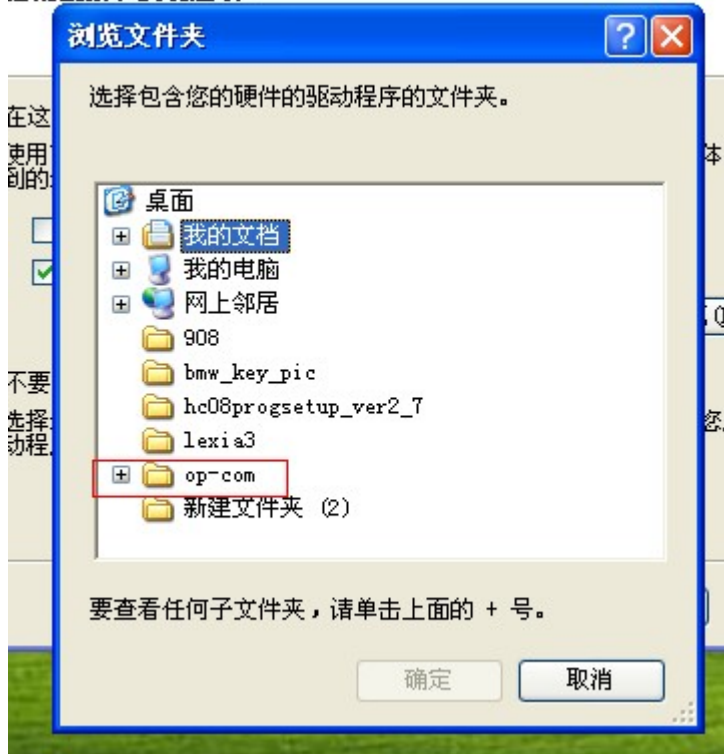
6 把 op-com 诊断设备连接电脑【电脑会提示安装 op-com 驱动-----选择从列表或指定位置安装】下一步 Connect the op com diagnostic interface with your computer(The computer will tell you to install the drive of the op-com----choose to install it from the list or the directed place), and then click next step



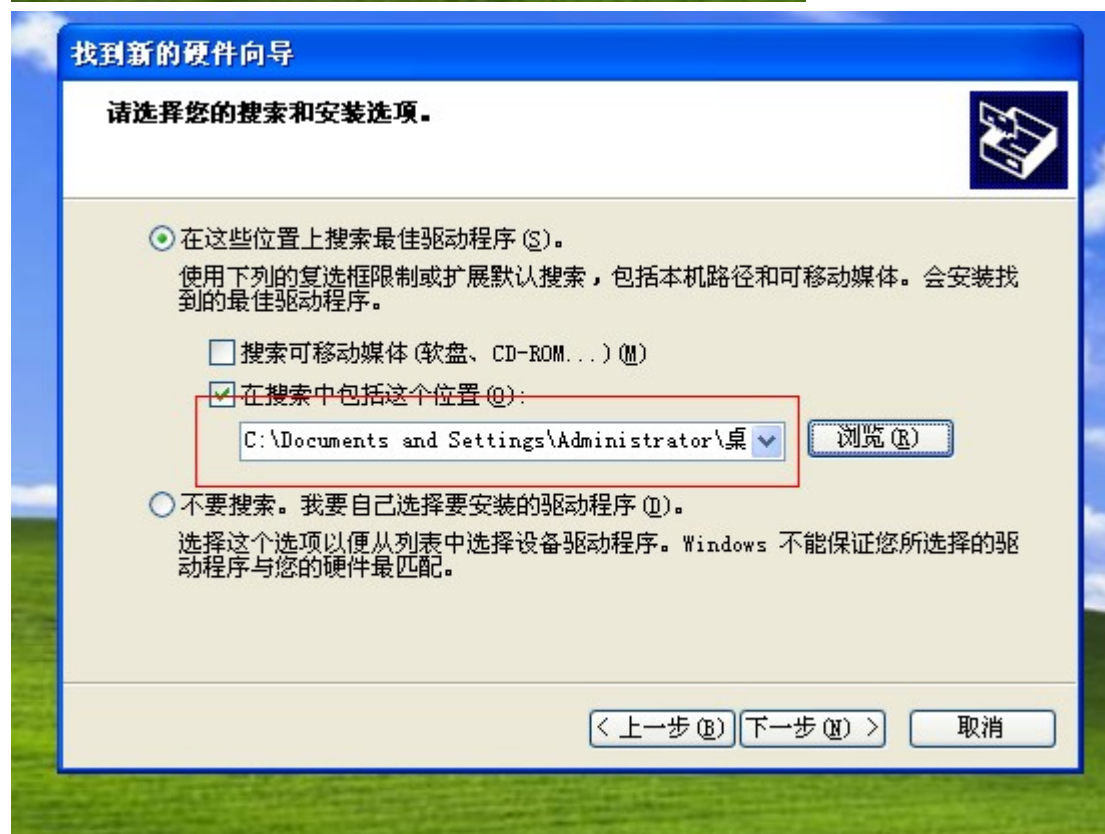
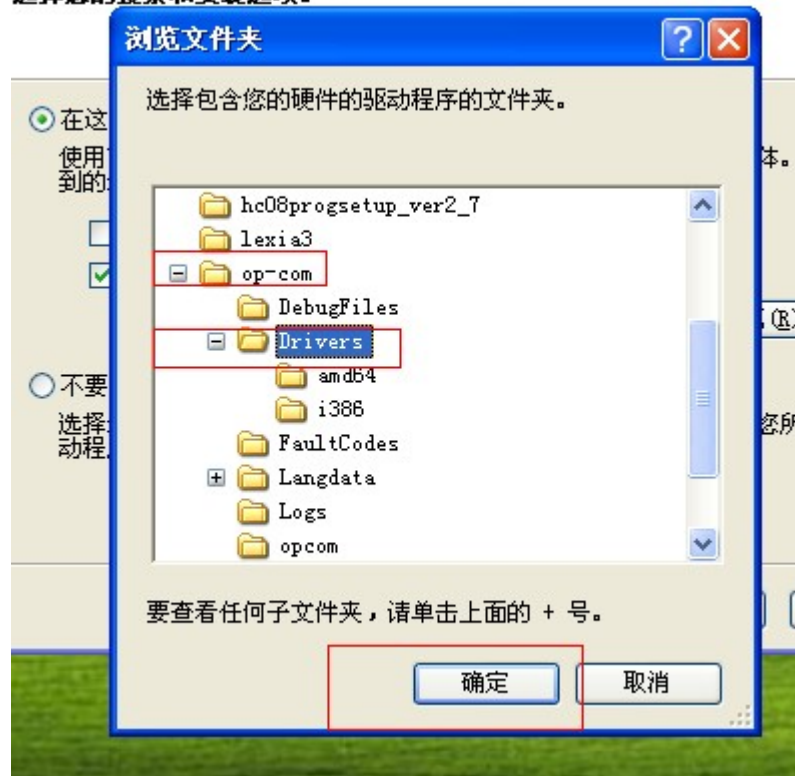
7 选择驱动安装路径 Choose the install route of driver installation

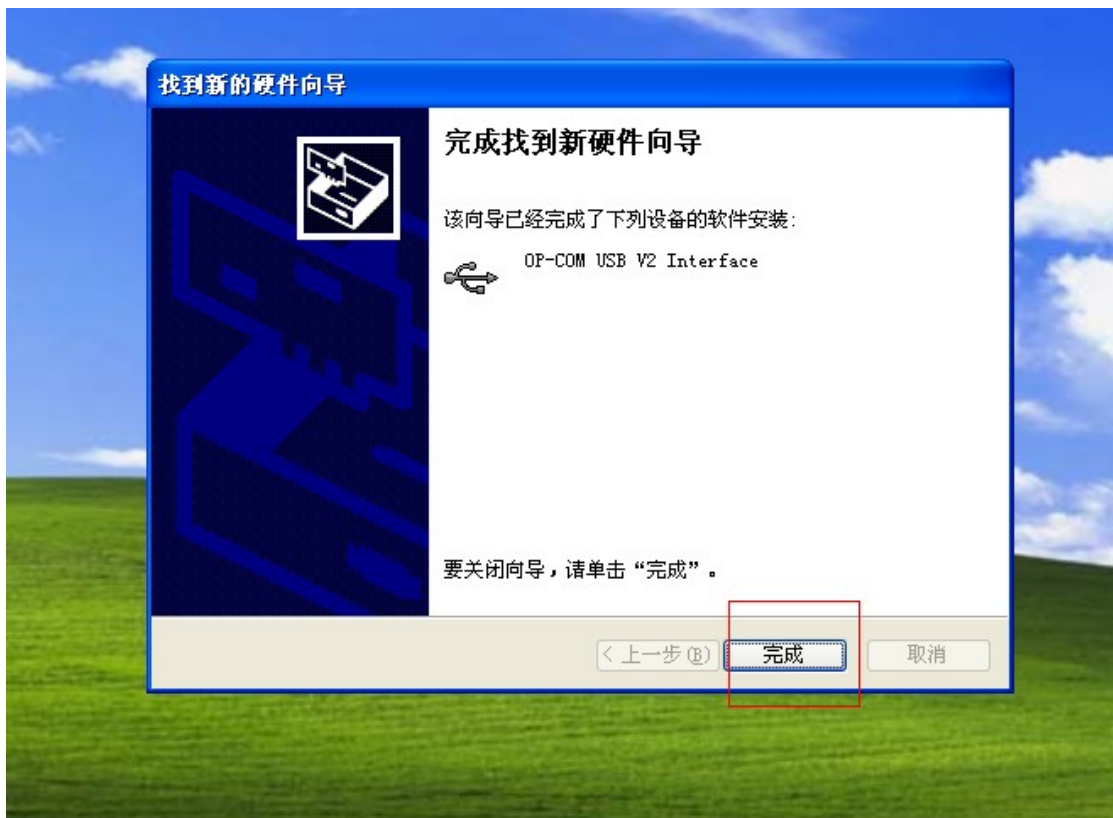
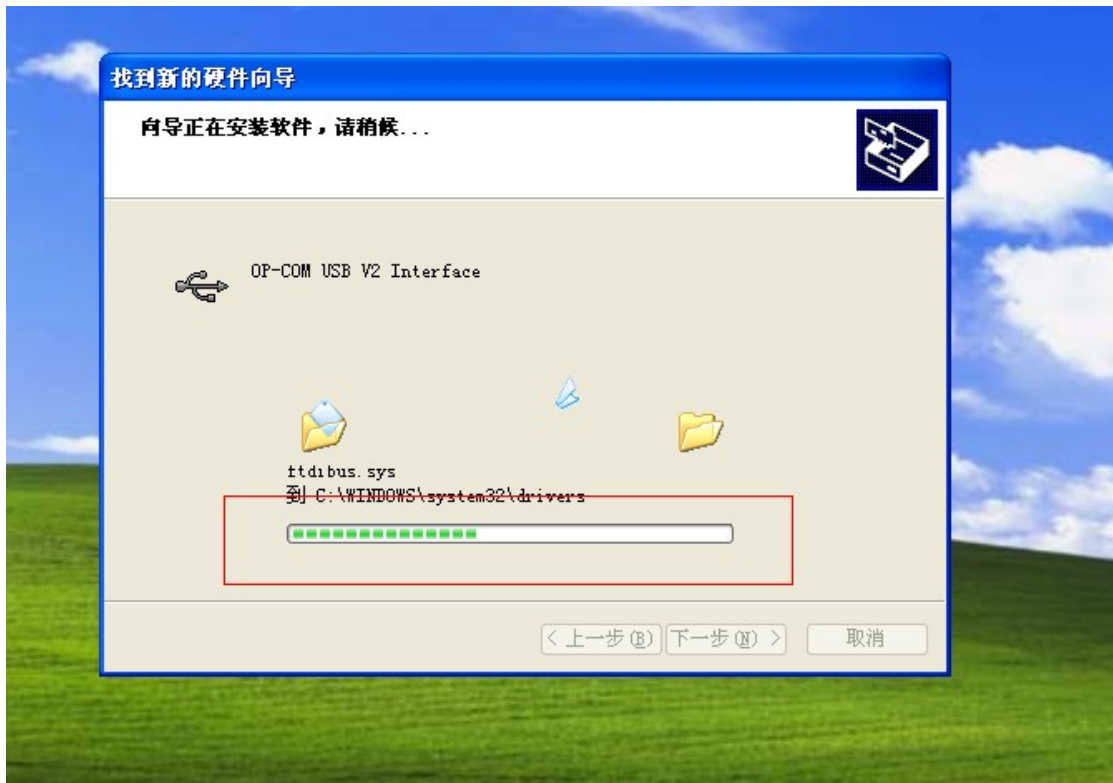


浏览文件夹选项。



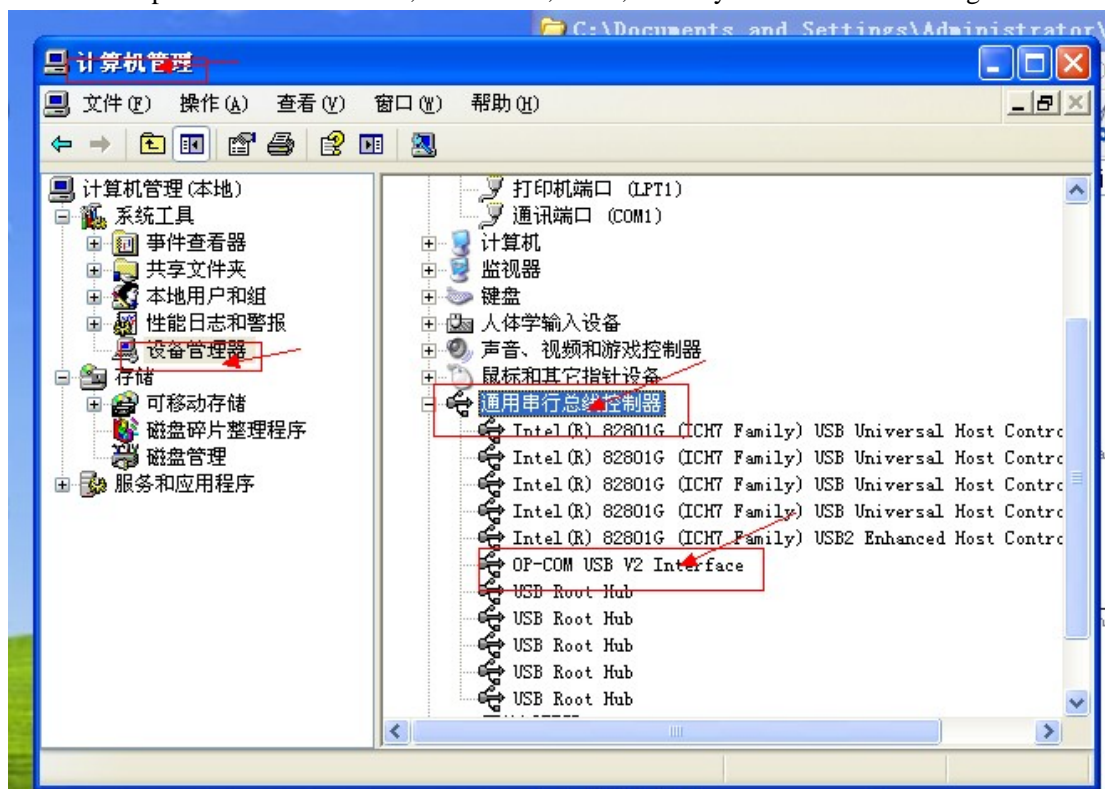
选择您的搜索和安装选项。





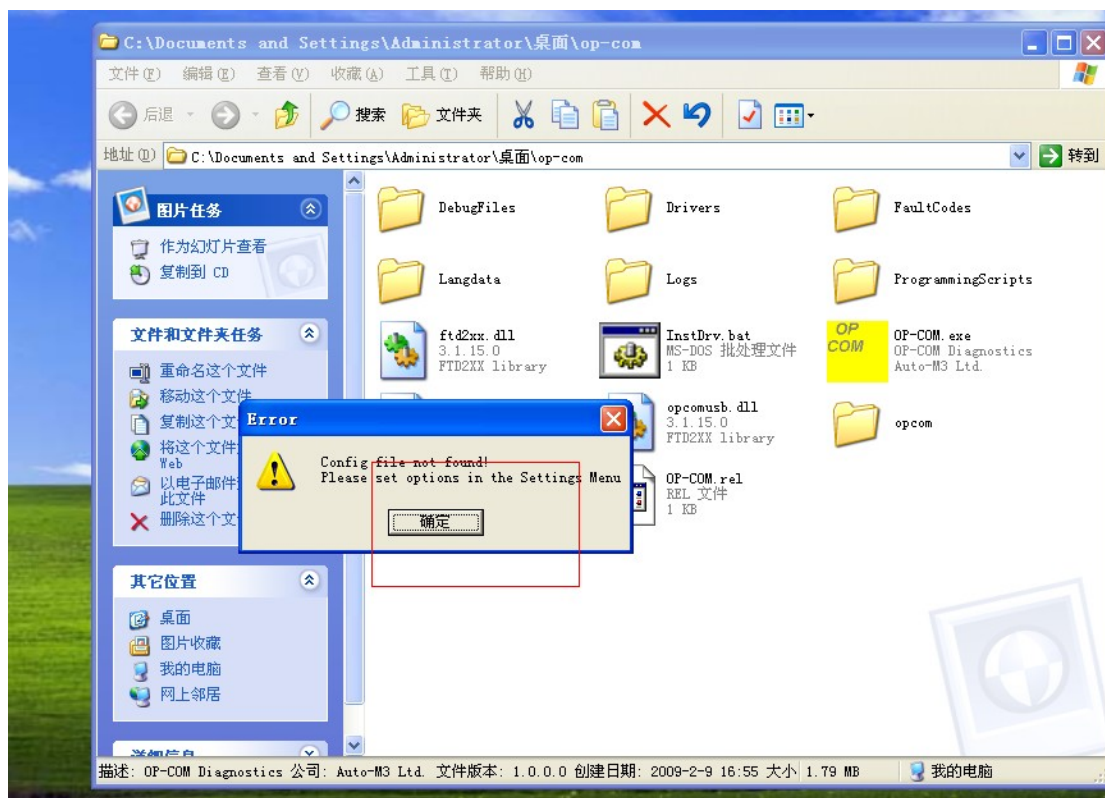
8 驱动安装完成查看 op-com 驱动的位置【我的电脑==管理==设备管理==通用串行总线】可以看到 op-com 的驱动如下图是 ok 的 Finish installing the driver, pls check the place of the

op-com driver(My computer=Management==Device Management==Universal Serial cable) You can see the op-com drive as follows, and it is ok, if not, means you can not install it right.

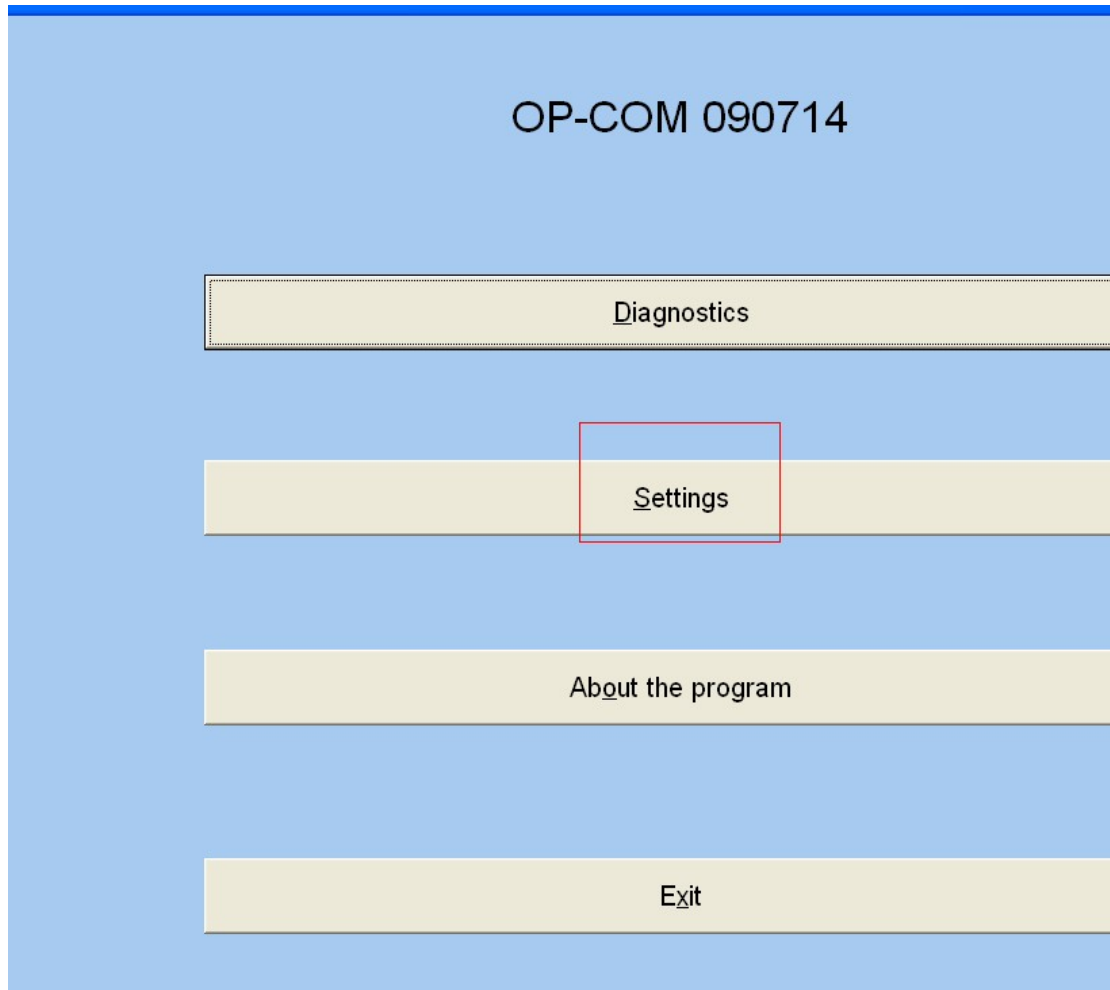


9 打开 桌面 op-com【OPCOM090714_EN_Crack.exe】软件进行激活

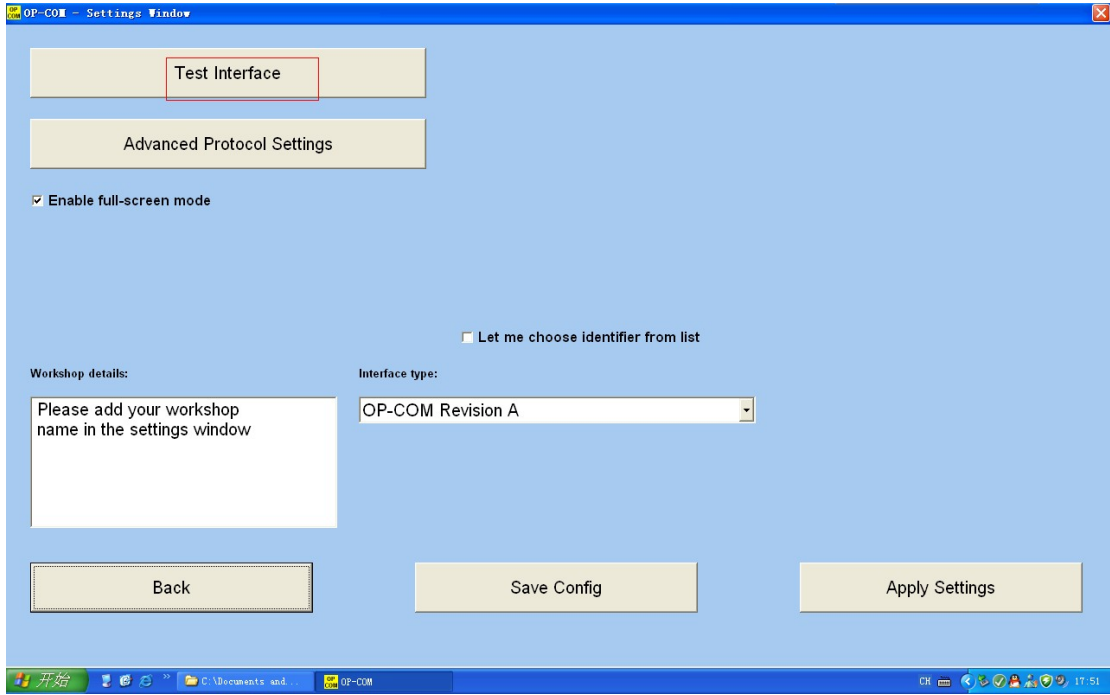
因为软件没有激活所以会提示没有端口 Open the p-com op-com【OPCOM090714_EN_Crack.exe】 in the desk to activate the software.



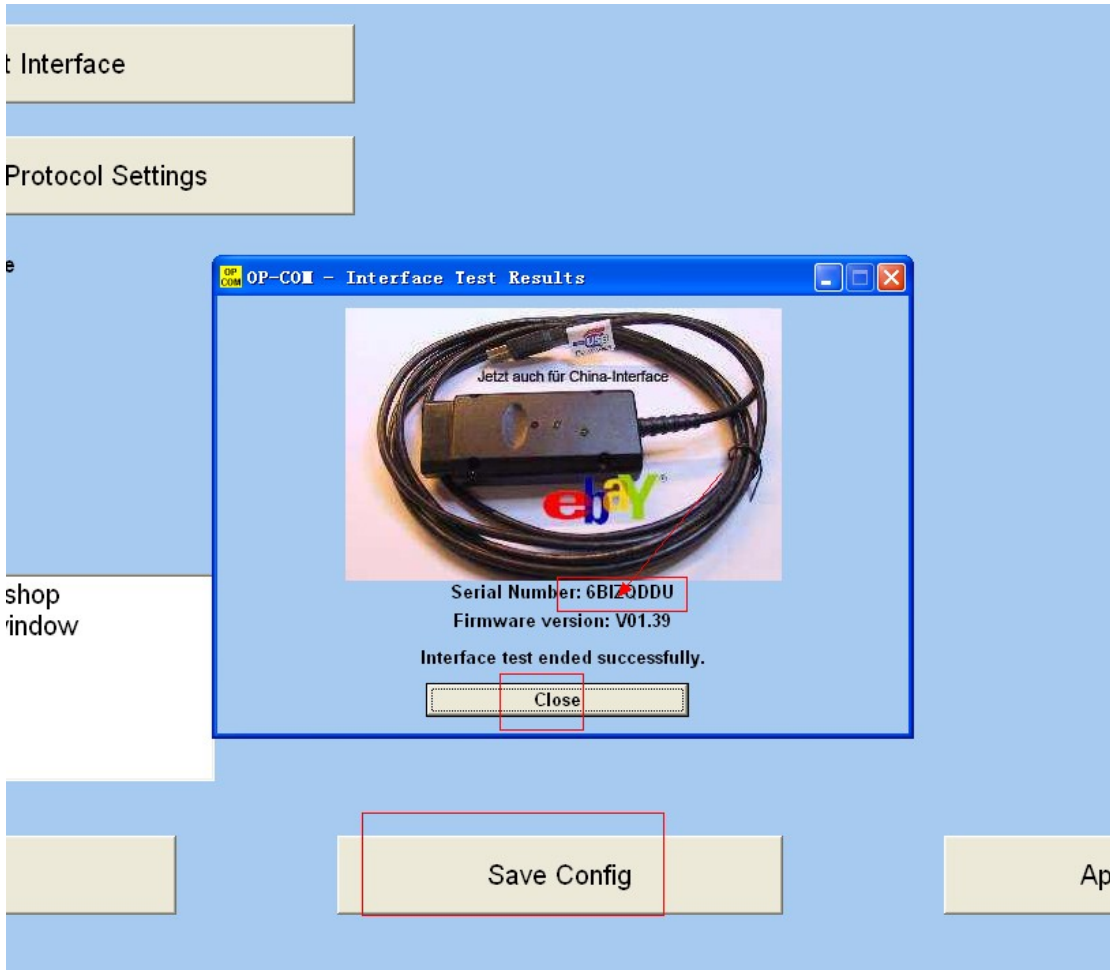
10 选择 settings Choose settings



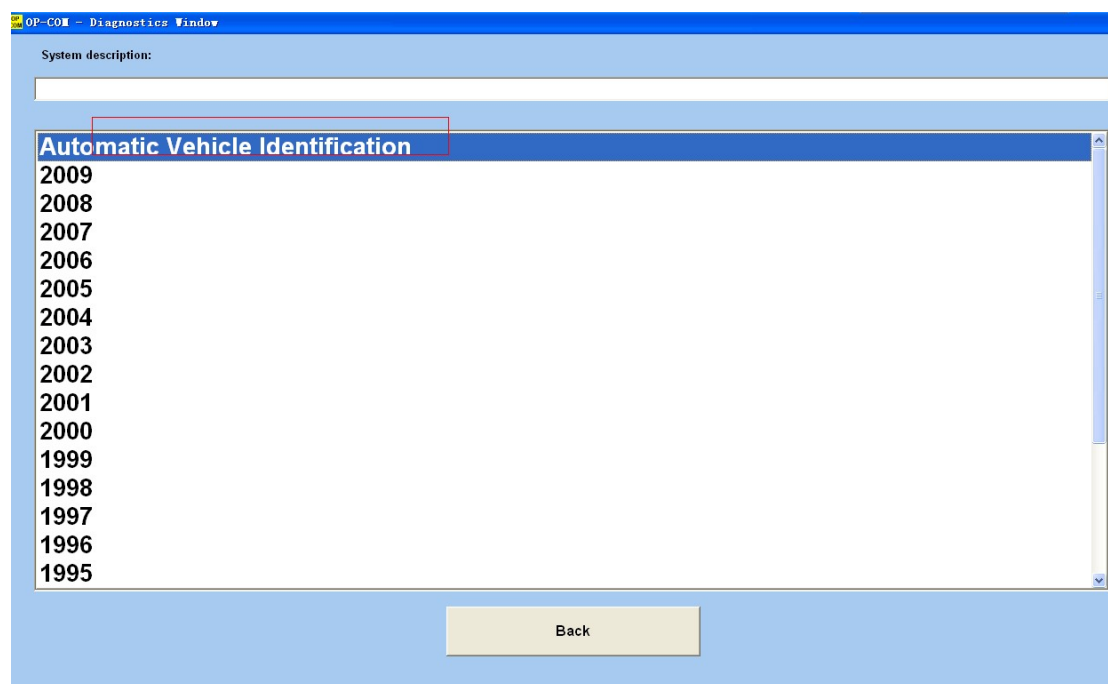
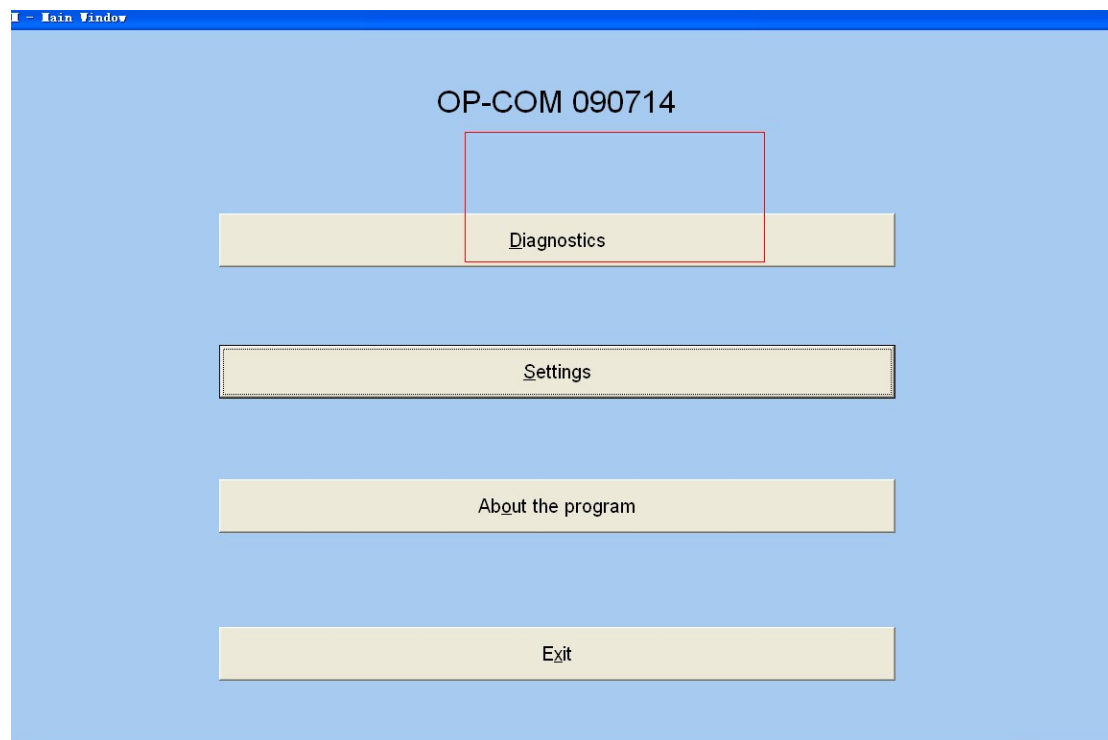
11 选择 test interface 【运行激活程序】 Choose test interface (Run the activation procedure)



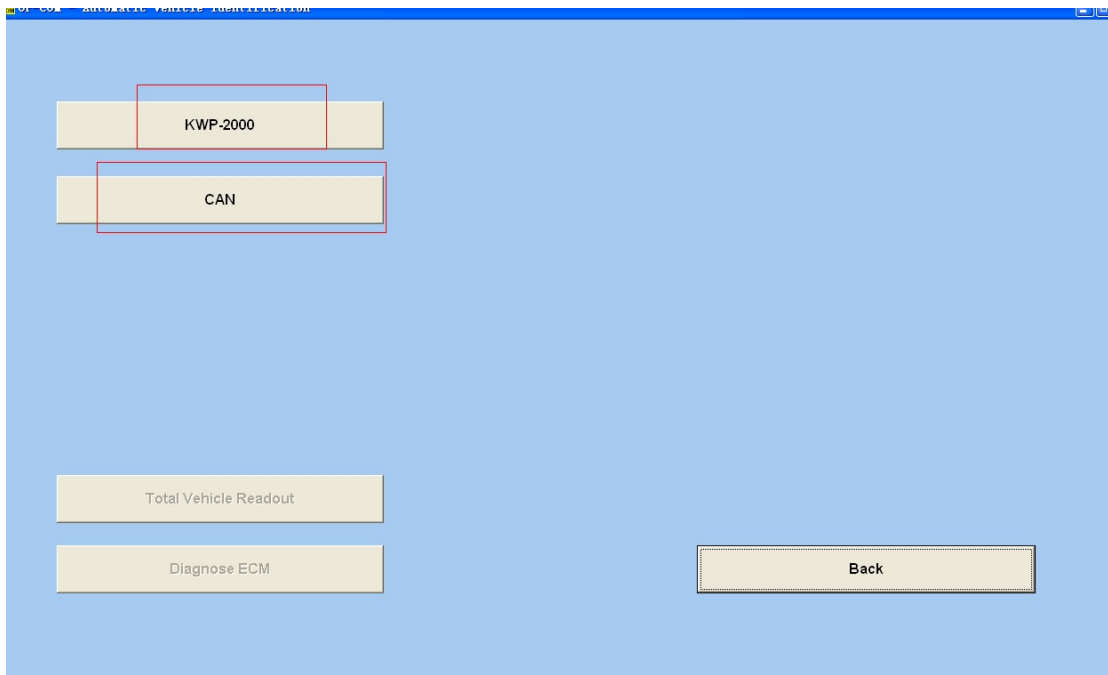
12 激活程序运行 ok 得到激活码【保存 save config】关闭激活码 If you succeed to run the procedure, you will get the activation code (save config) ,close the activation code



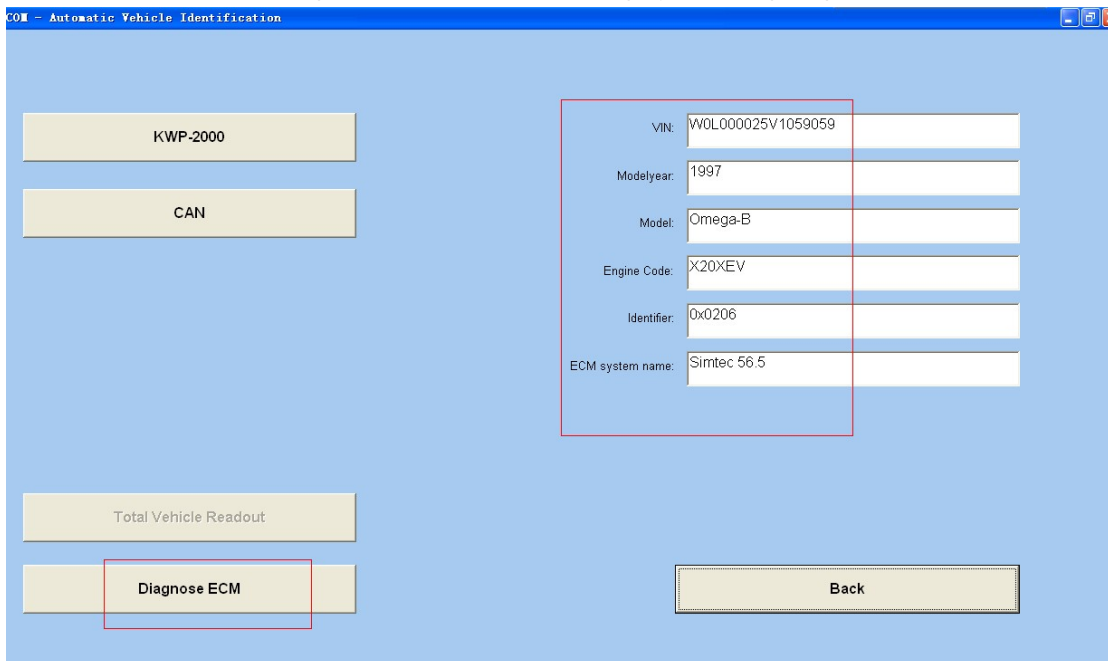
13 选择【diagnostics】 Choose(diagnositics)



14 选择协议检测 Choose the protocol to start testing



15 协议检测通过选择 diagnose ecm Protocol testing by choosing diagnose ecm



16 读取故障码 read the fault code

OP-COM - KW2000 Communication Window> 1997|Omega-B|Engine|X 20 XEV

Communication parameters 010400 bps IC=00 CRC Error=00 Used pin=#07 KW-2000 Protocol		Control Unit Information Part Number: <input type="text" value="90491975"/> Production Date: <input type="text" value="565S9020"/> Alpha Code: <input type="text" value="NU"/>		
--	--	--	--	--

Keyword 2027 protocol
 Keyword #1: 6B
 Keyword #2: 8F
 Normal timing parameter set.
 VIN: W0L000025V1059059
 vehicleManufacturerECUHardwareNumber: 90491975 NU
 systemSupplierECUHardwareNumber: 2516E
 systemSupplierECUSoftwareNumber: 21d21e24e
 systemSupplierECUSoftwareVersionNumber: 0420
 exhaustRegulationOrTypeApprovalNumber: S96001
 systemNameOrEngineType: X20XEV
 RepairShopCodeOrTesterSerialNumber: Not programmed
 ProgrammingDate: FFFFFFFF

Identifier: 0206

CalibrationDate: 565S9020
 CalibrationEquipmentSoftwareNumber: 25900300

Close

Further Development

- Fault Codes
- Measuring Blocks
- Output Tests
- Special Functions
- Programming

OP-COM - ErrorCodes

List of stored fault codes Total number of fault codes: 8

P0410 - (2) Secondary Air Pump Relay Voltage Low - Present
 P1503 - (0) Immobiliser Wrong Signal - Not present
 P0340 - (8) Camshaft Sensor Incorrect Signal - Not present
 P0110 - (1) Intake Air Temperature Voltage High - Present
 P0115 - (1) Coolant Temperature Voltage High - Present
 P0120 - (1) Throttle Position Sensor (TPS) Voltage High - Present
 P0505 - (1) Idle Air Control Voltage High - Present
 P1690 - (2) Telltale (Check Light) Voltage Low - Intermittent

Detailed fault code description

P0410 Present
 (2) Secondary Air Pump Relay Voltage Low

Refresh List

Clear Fault Codes

Print Fault Codes

Measuring Blocks

Back

Save Codes to File

Copy Codes to Clipboard