

---

# VPECKER USER MANUAL

---

## Table of contents

1. Running environment.....	
2. Software installation .....	
2.1 Client downloading .....	3
2.2 Client setup.....	3
3. Software activation and downloads .....	
3.1 Software activation .....	7
3.2 Software downloads .....	12
3.3 Software management .....	15
4. Software introduction.....	
4.1 Online store .....	17
4.2 Diagnosis service system.....	18
4.2.1 Features.....	18
4.2.2 Vehicle coverage.....	21
4.2.3 System coverage.....	22
4.2.4 Function coverage .....	23
4.3 Expert service system.....	23
4.4 Settings .....	24
4.4.1 Language .....	24
4.4.2 Run mode.....	25
4.4.3 Unit selection.....	26
4.4.4 Display mode.....	27
4.4.5 Logging .....	27
4.4.5 Update .....	28
4.4.6 About me .....	29
4.5 DTC query .....	29

---

4.6 Dictionary .....	31
4.7 Example .....	31
4.7.1 Communication .....	31
4.7.2 Read ECU information .....	35
4.7.3 Read DTCs .....	36
4.7.4 Earse DTCs .....	36
4.7.5 Data List .....	37
4.7.6 Inspection .....	41
4.7.7 TP Position Reset .....	44
4.8 Screenshot .....	46
4.9 Print .....	47
4.10 Manual .....	49
4.11 Diagnose function list .....	51
5. Products website .....	
6. Warranty .....	

## 1. Running environment

- Hardware environment:
  - Windows laptop, PC or PAD
  - CPU speed: more than 1.0G Hz
  - Memory: more than 1GB
  - Disk: more than 32 GB
  - Communication port: Wi-Fi or Bluetooth
- Software environment:
  - Windows XP, Windows 7, Windows 8, Windows 10

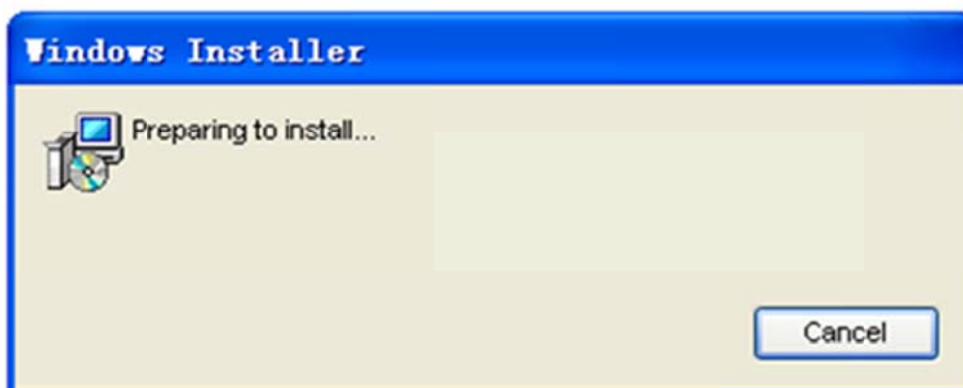
## 2. Software installation

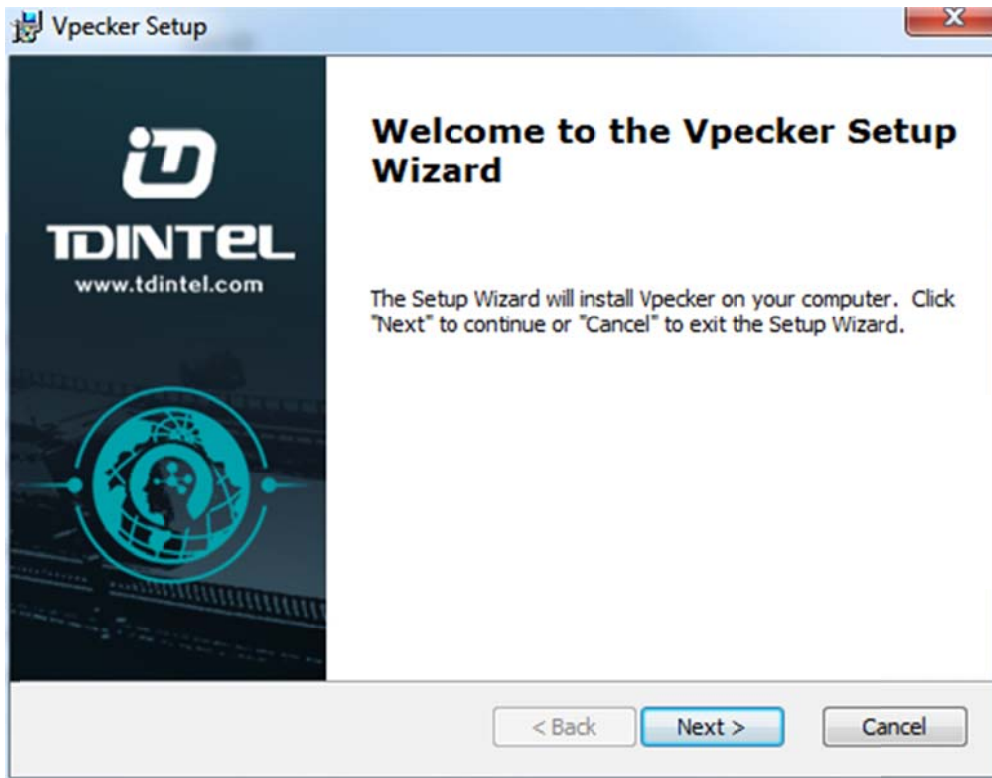
### 2.1 Client downloading

Access the website: <http://www.vpecker.com/vpecker-software-download/>, and download “Vpecker EasyDiag V6.7”

### 2.2 Client setup

Unzip Vpecker EasyDiag V6.7 and run Vpecker setup.exe:

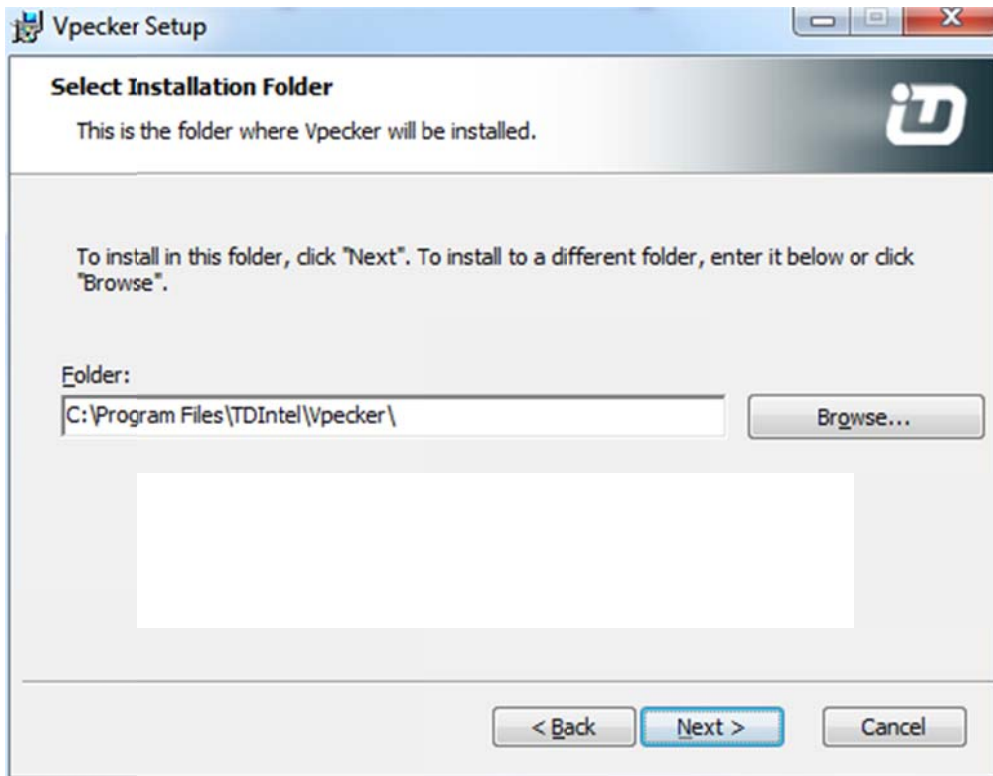




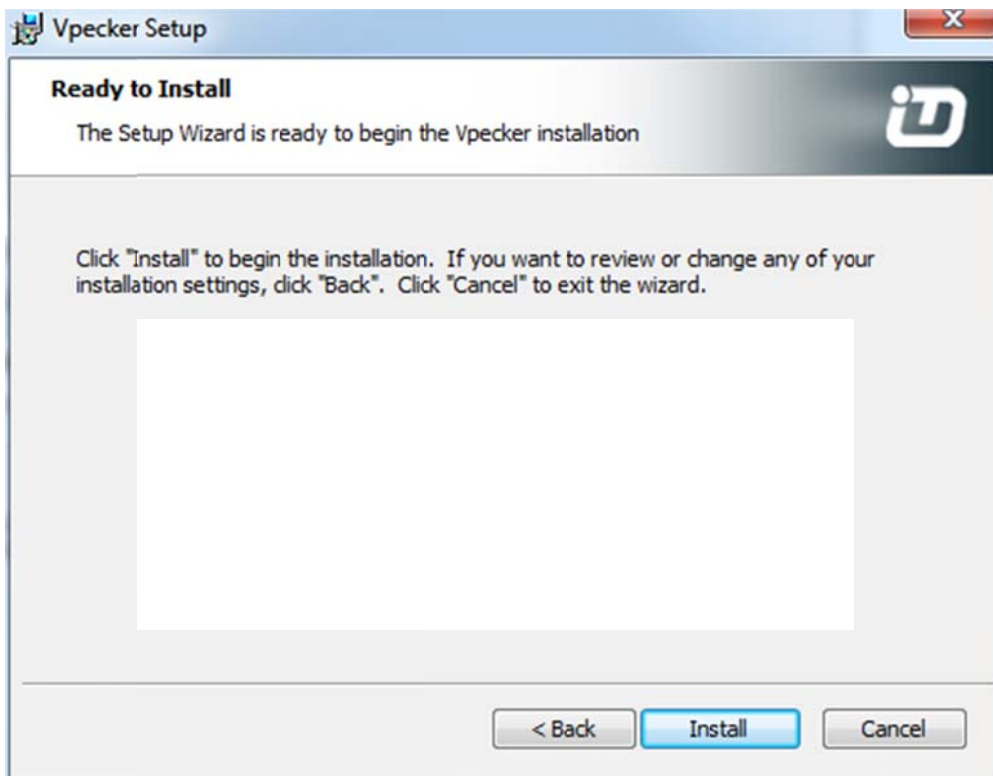
Please click "Next".



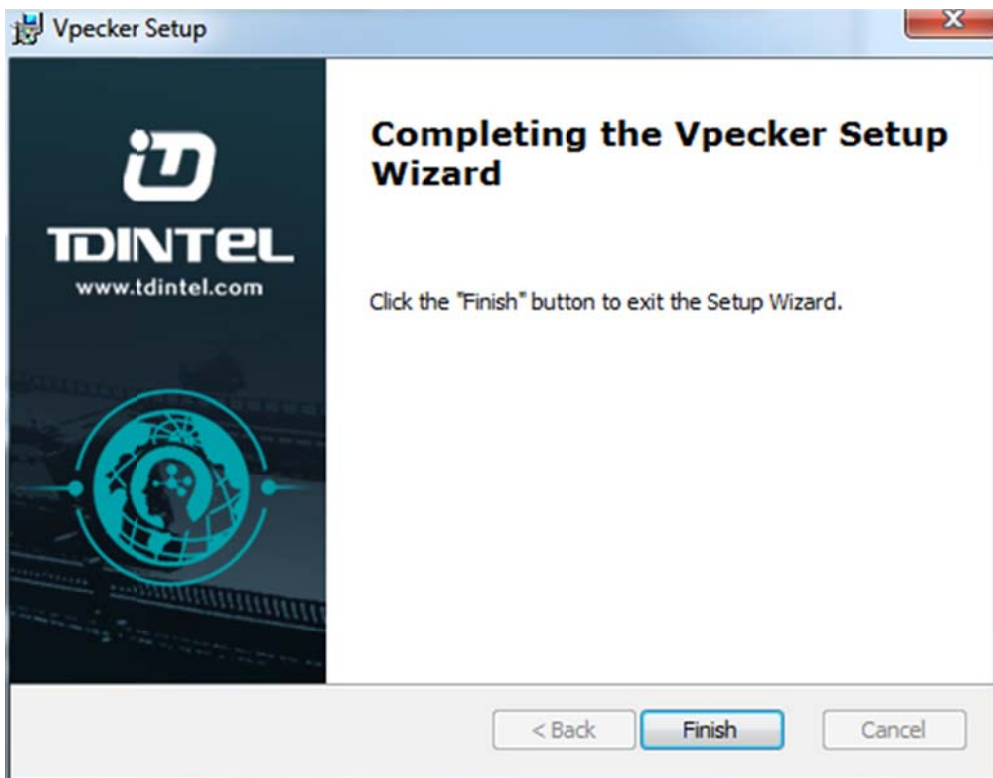
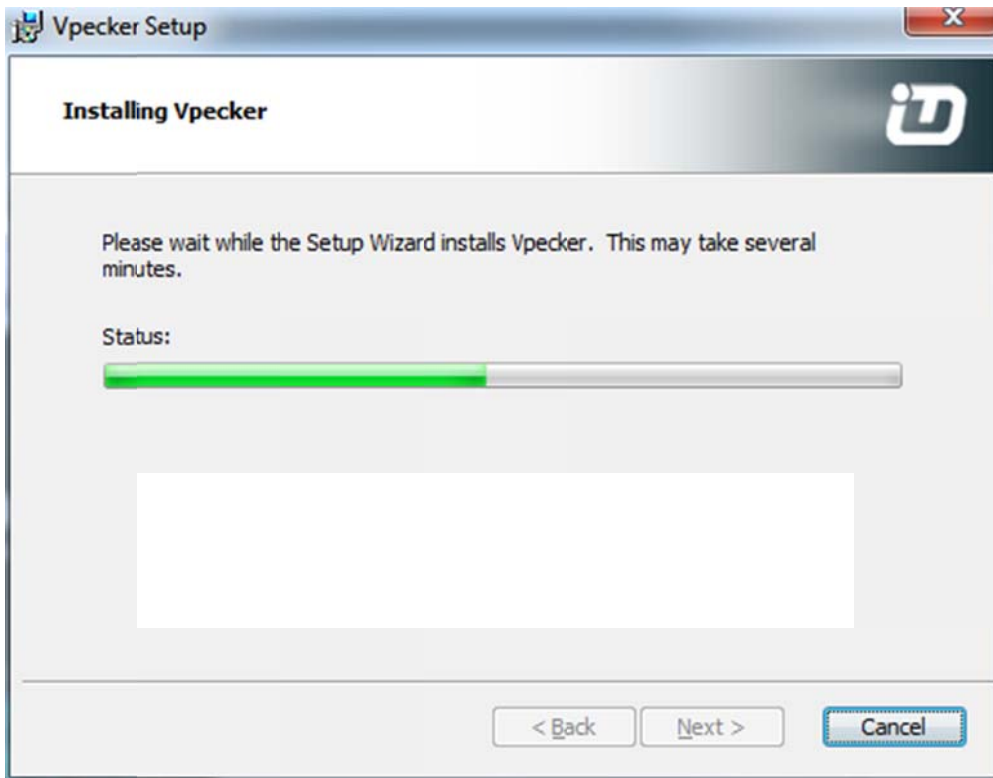
Please click "Next".



You can change the path to install the software, then, please click “Next”.



Please click “Install”.



VPECKER wireless diagnostic service system installs successfully.

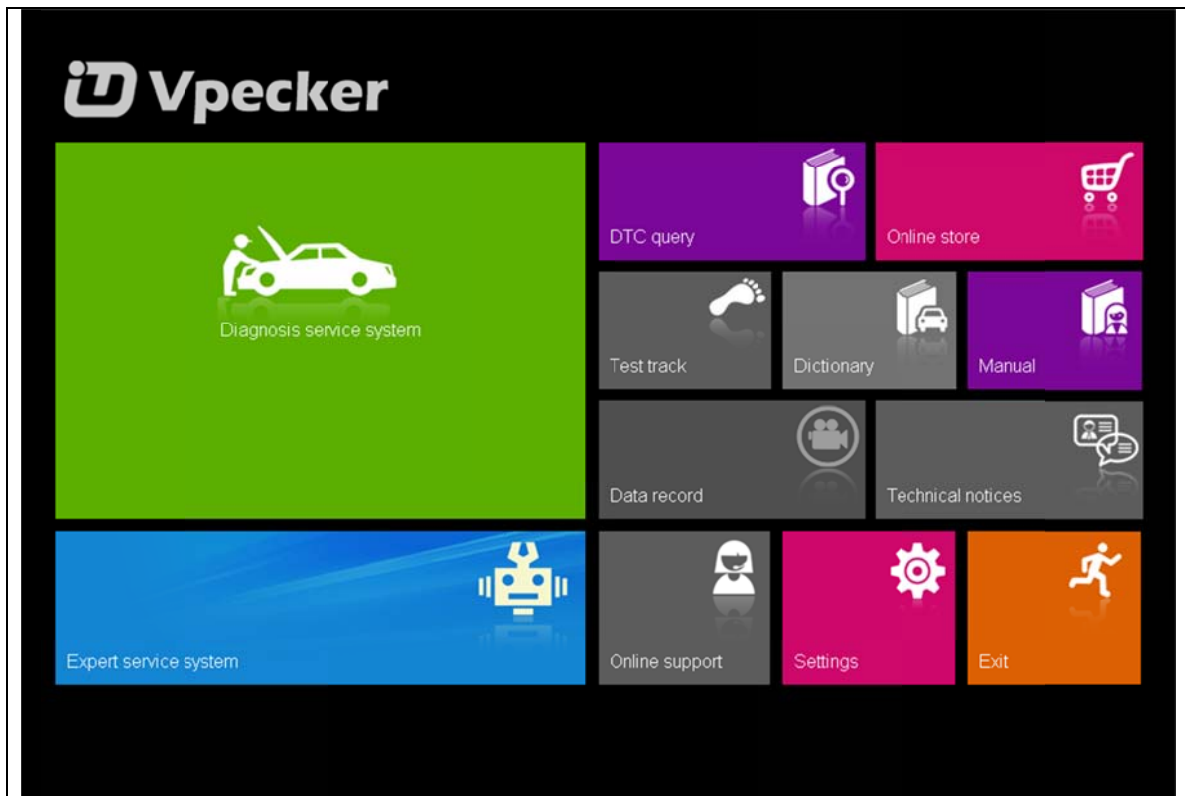
### 3. Software activation and downloads

#### 3.1 Software activation

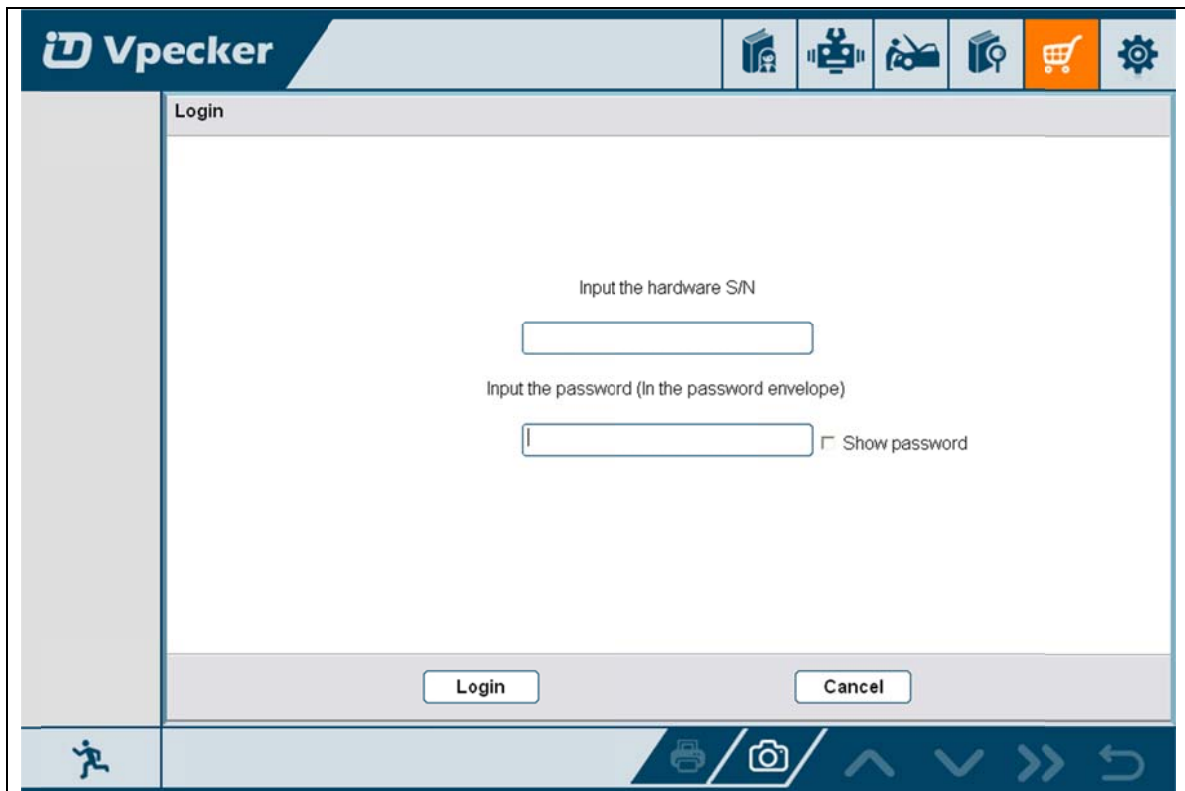
At first, please keep network working. Run VPECKER APP, then click “Online store” to get applications.



Please wait...

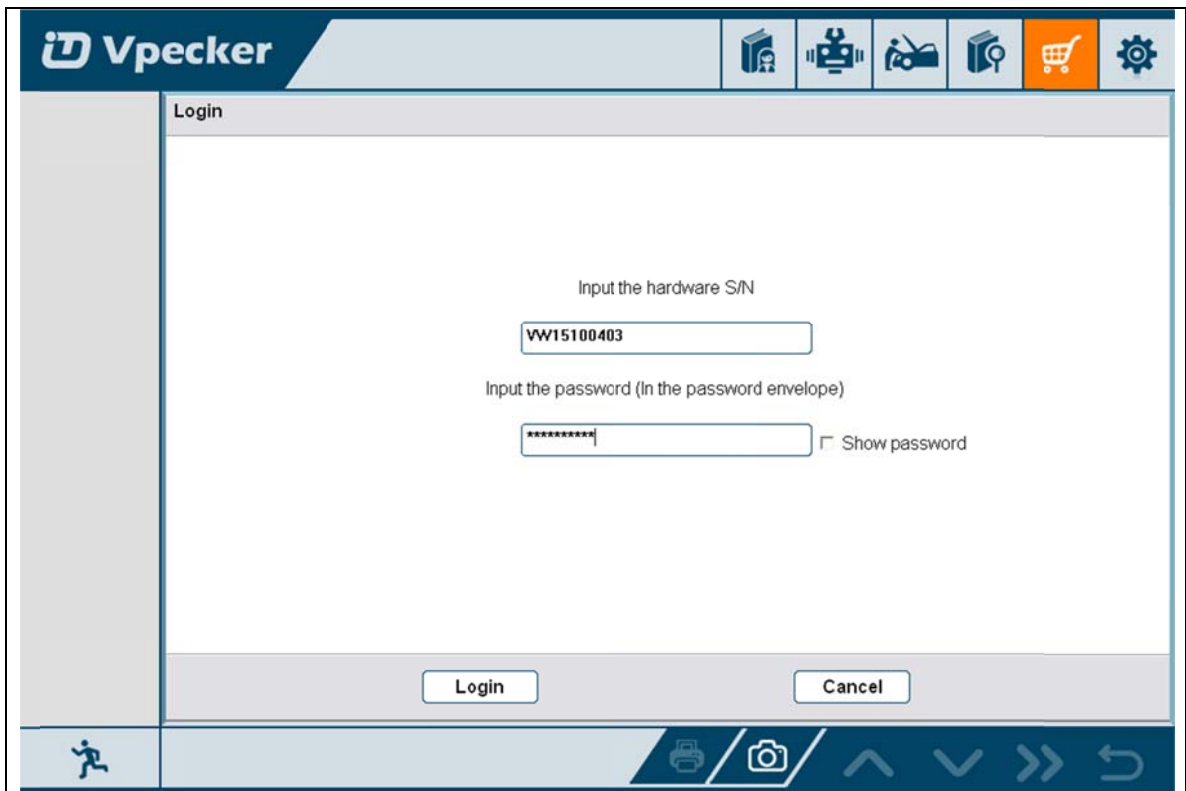
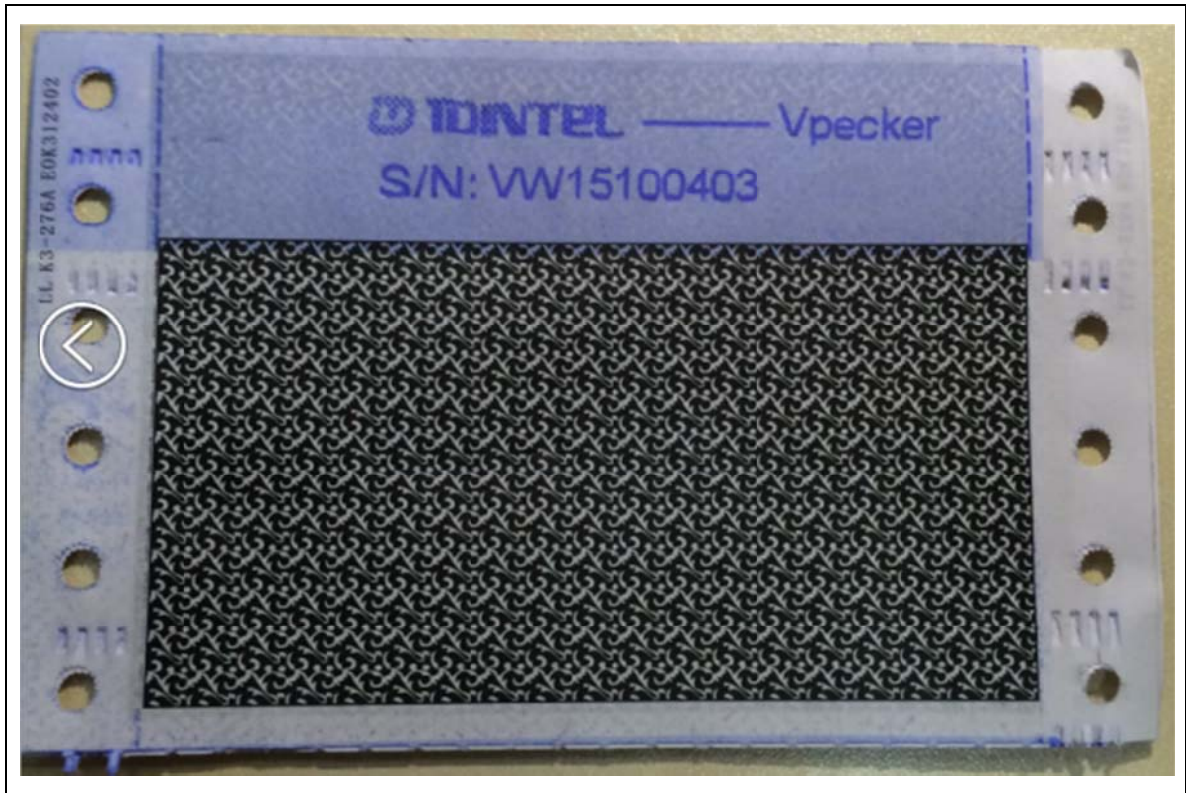


Please click “Online store”.

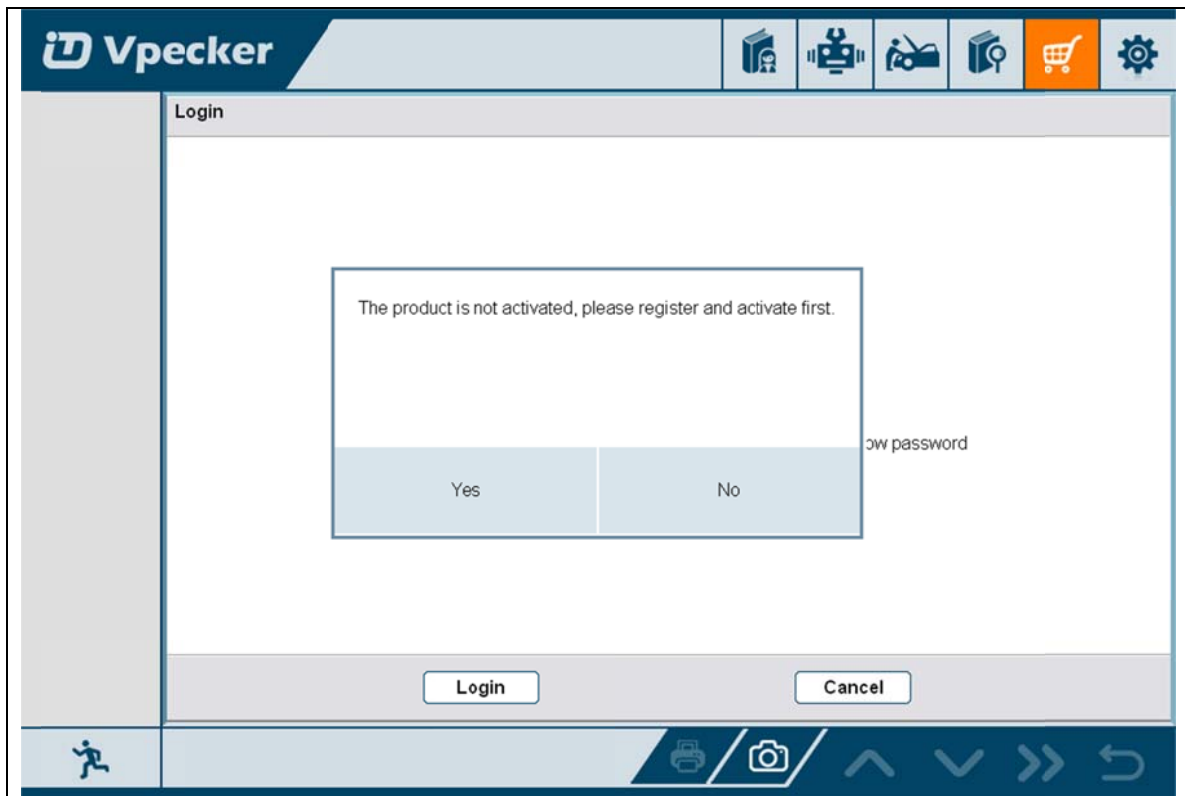


Please enter the S/N number and password get from the envelope, and then click “Login”.

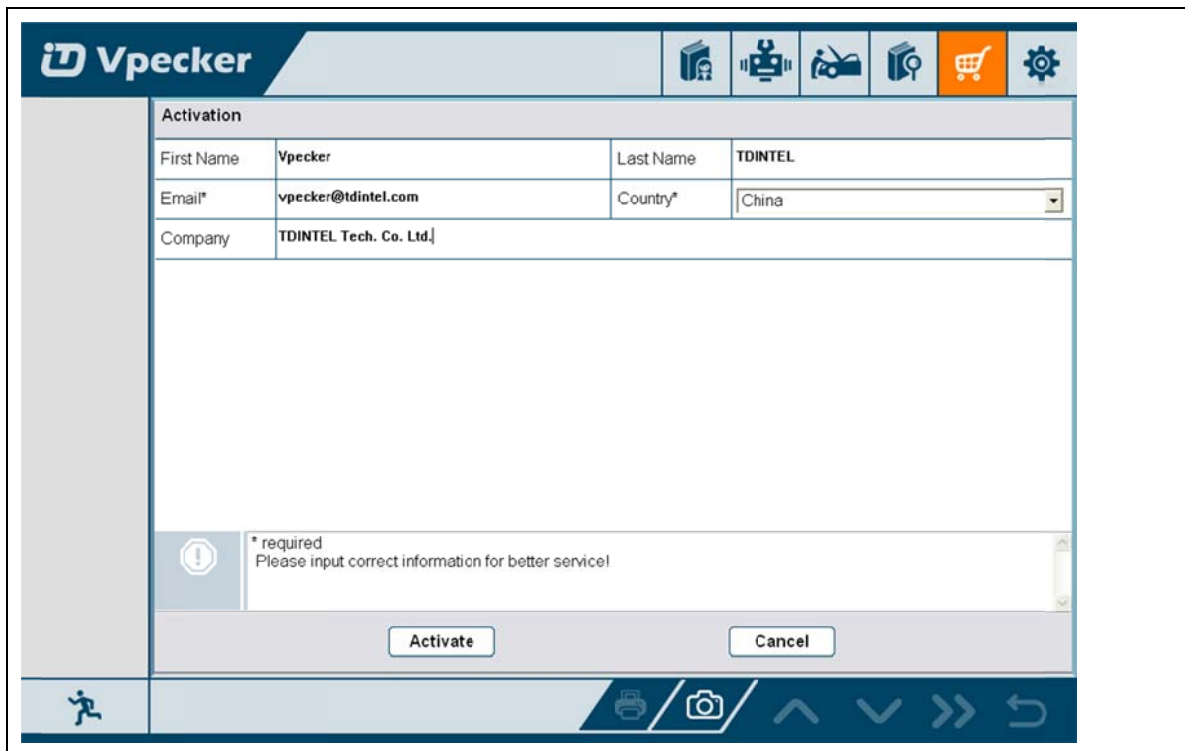




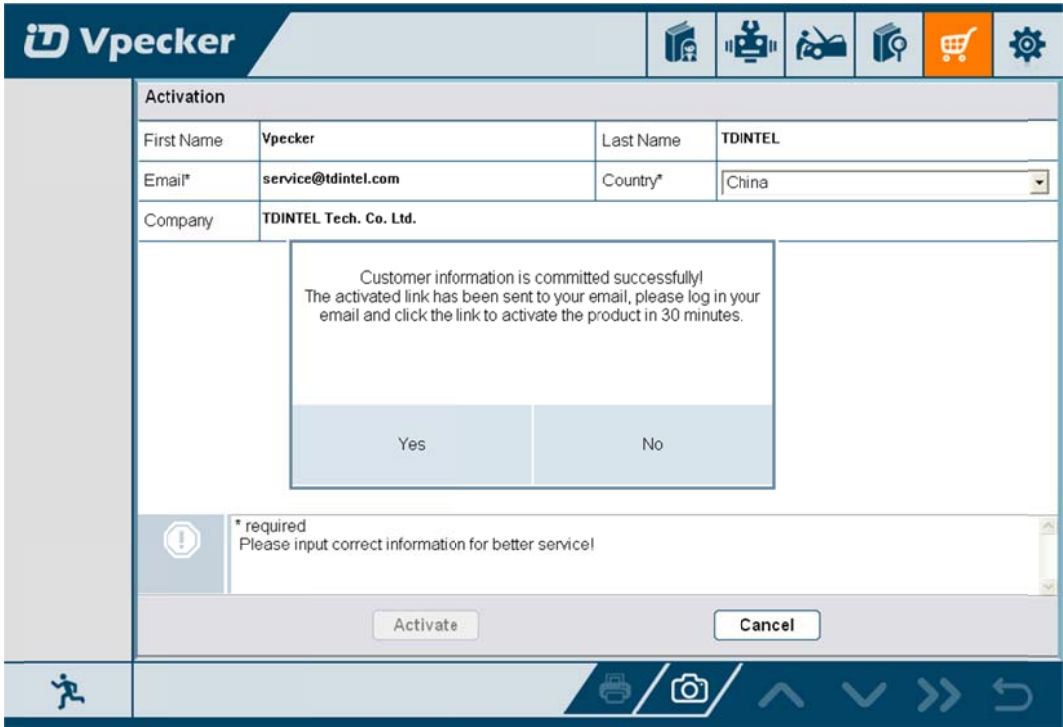
Please click “Login”.



If the product is not activated, please click “Yes”.



Please input your information, the Email address and country are required, and then click “Activate”.



Activation			
First Name	Vpecker	Last Name	TDINTEL
Email*	service@tdintel.com	Country*	China
Company	TDINTEL Tech. Co. Ltd.		

Customer information is committed successfully!  
The activated link has been sent to your email, please log in your email and click the link to activate the product in 30 minutes.

Yes No

\* required  
Please input correct information for better service!

Activate Cancel

Note:

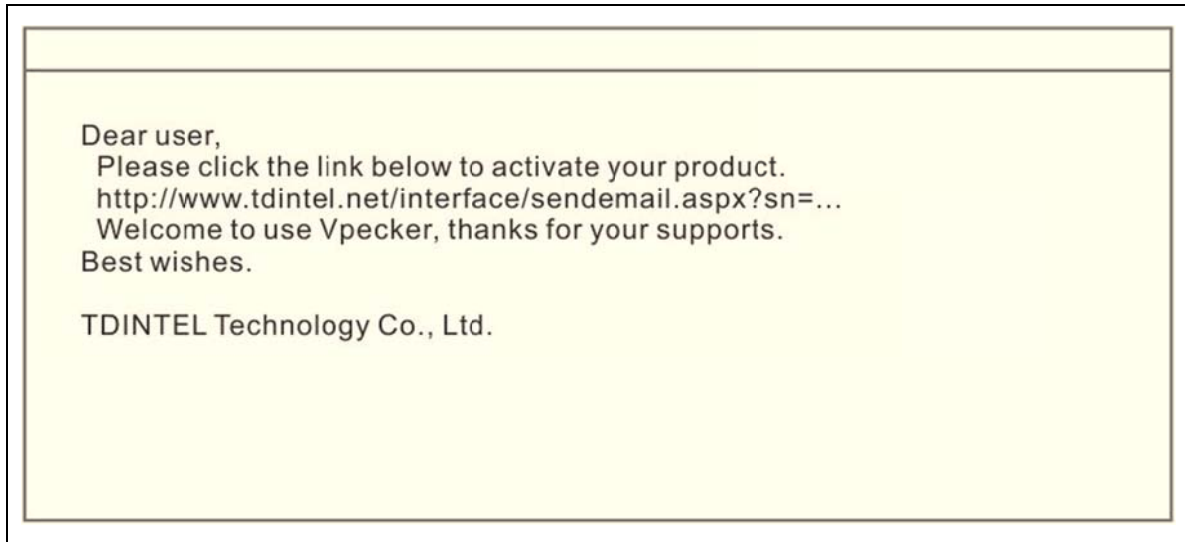
Your email address must be real in order to get the activated link and the further better service from the manufacturer. The software update reminder and the new product release information will be sent to your email.

**If you do not receive the activation email, please add "vpecker@tdintel.com" to the white list of your mailbox and try the activation process again.**

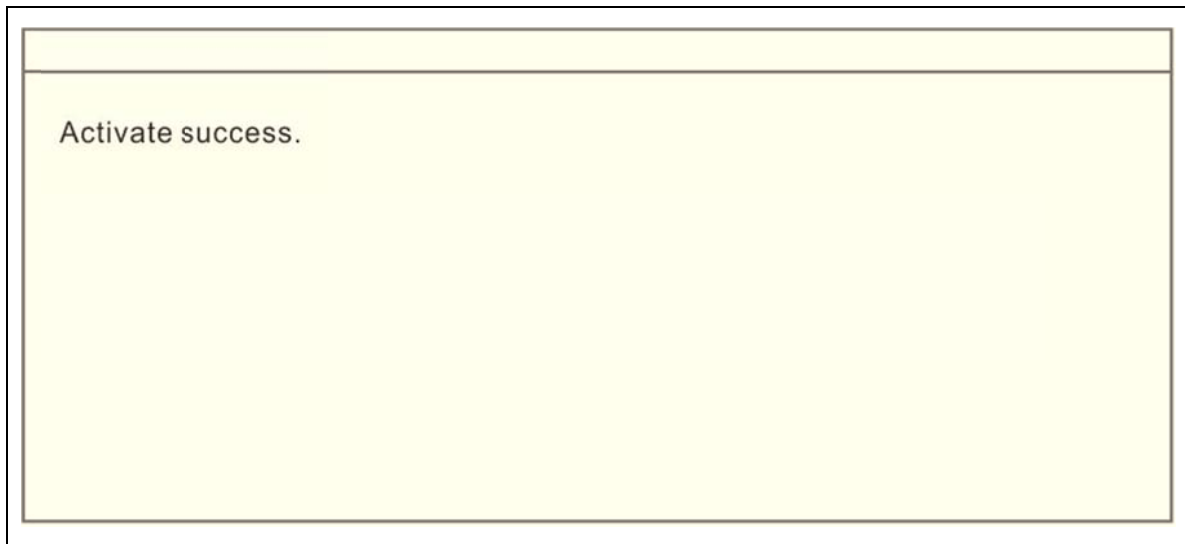
Company name: company name must be filled in and the length is within 250 characters.

Country: please choice your country in the list.

Press "Yes" to confirm your information:

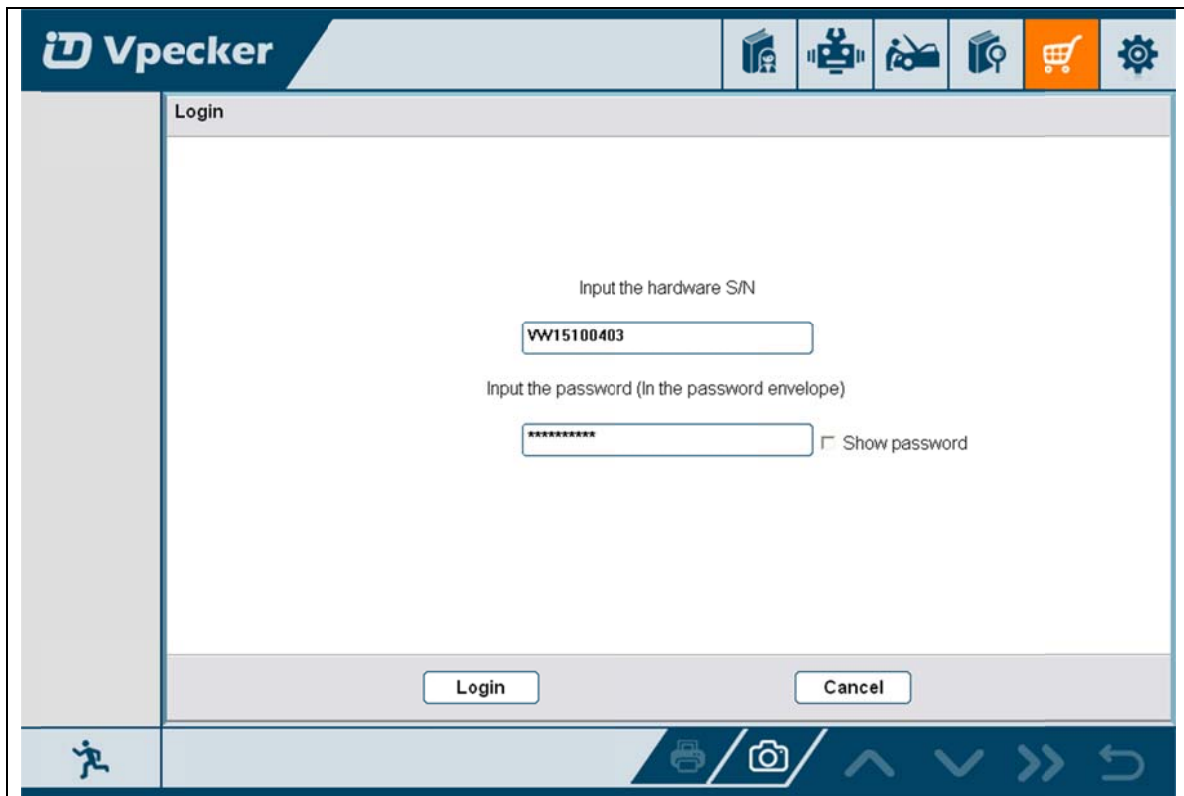


Please click the link to get the confirmation from the manufacturer.

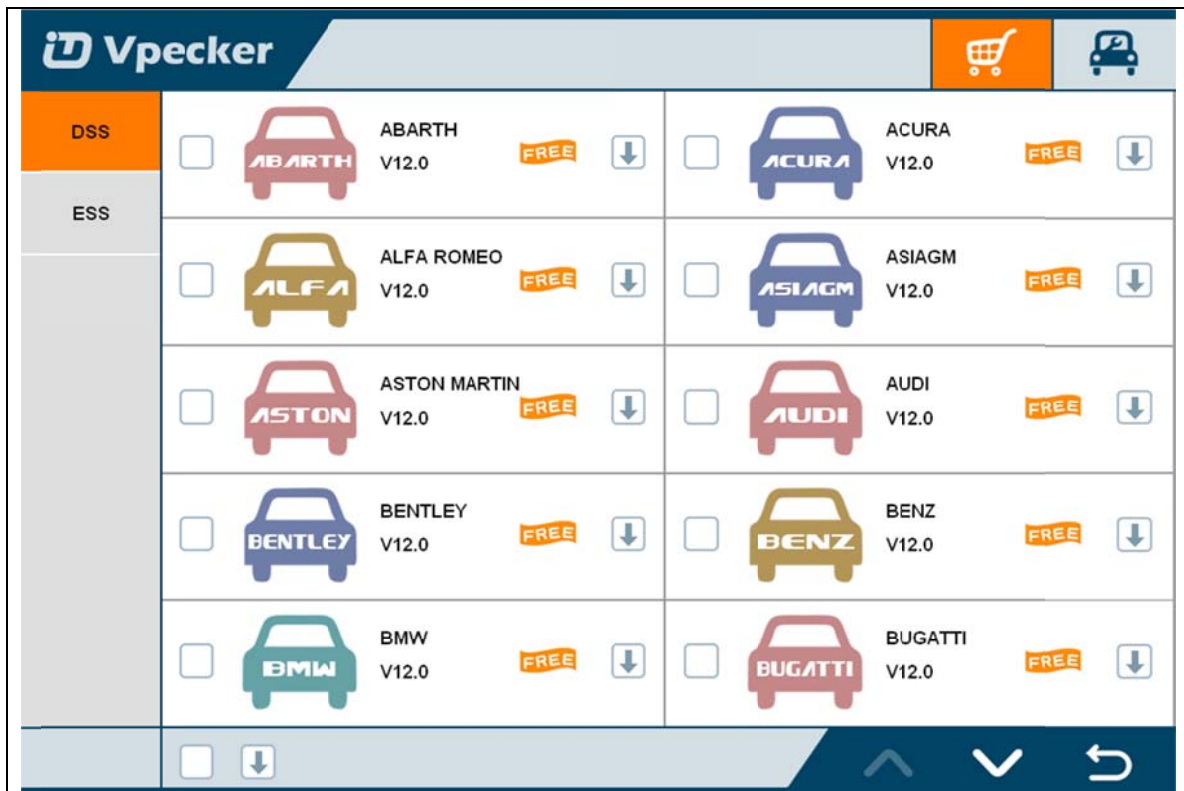


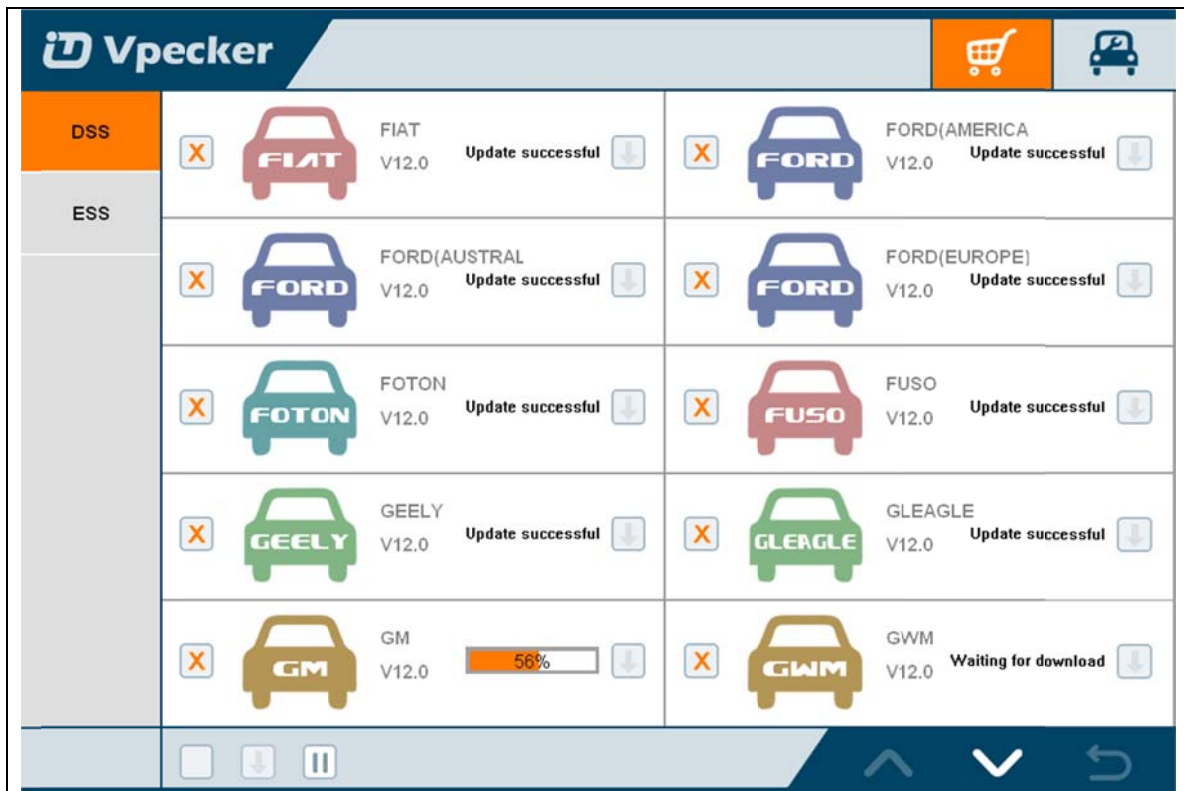
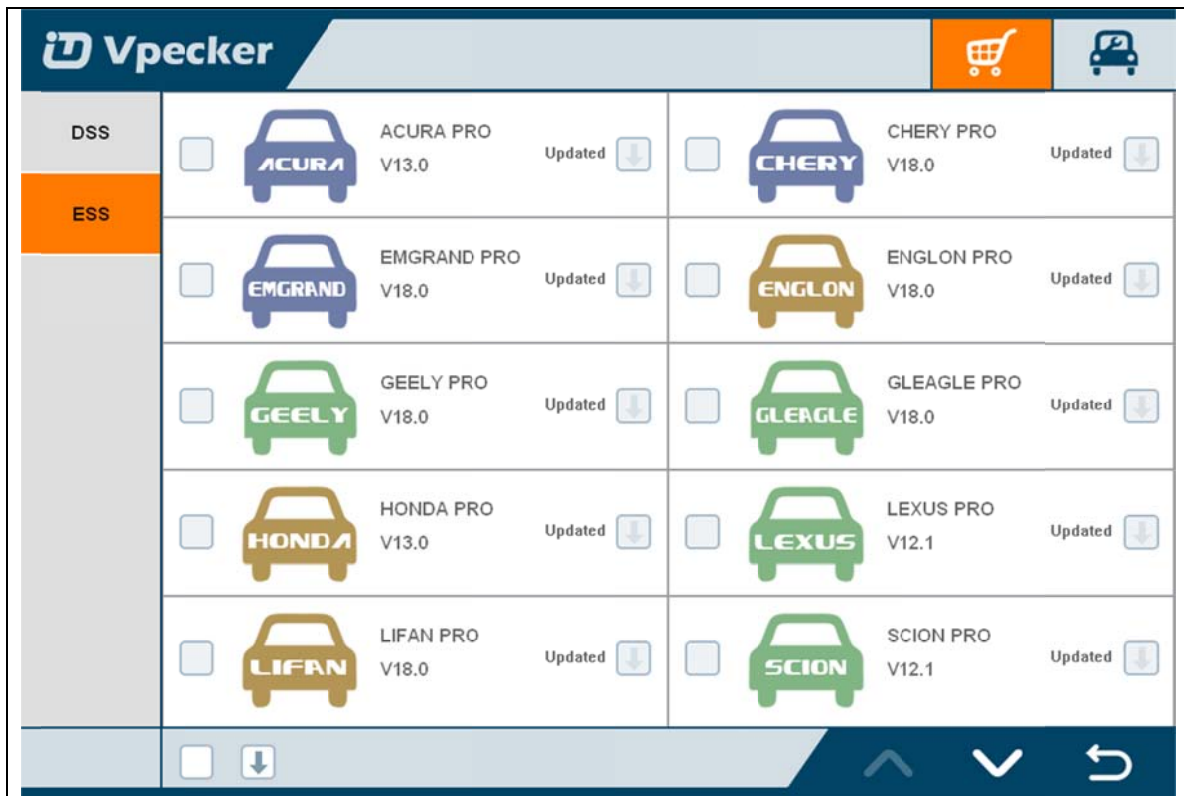
### **3.2 Software downloads**

After the activation, please login the online store again, and get the APPs upgrade.



Please, click “Login” to download the software.

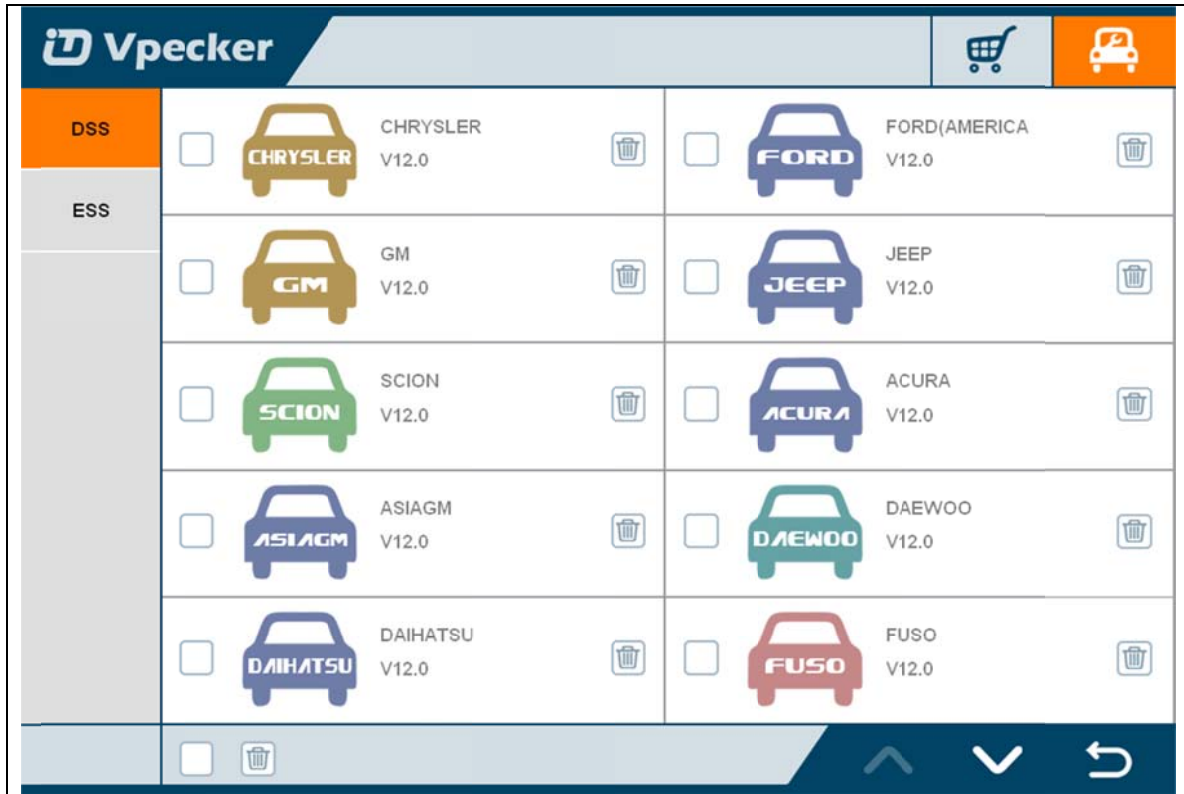


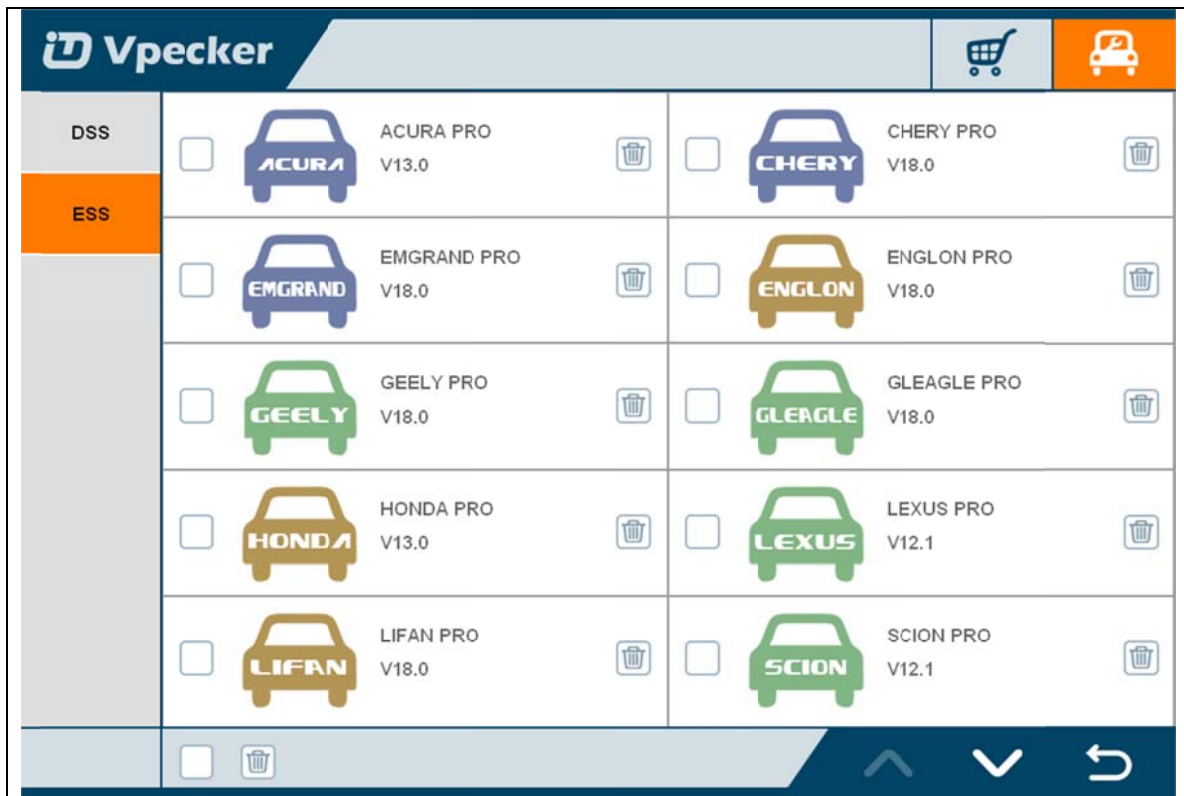


There are two modes for downloading, one by one and one-click. It may take a long time to download all the software, due to customers' network speed reason.

### 3.3 Software management

Users can delete vehicle software here. You can delete one by one or all-selected delete.





#### 4. Software introduction

Run VPECKER, The screen will show:

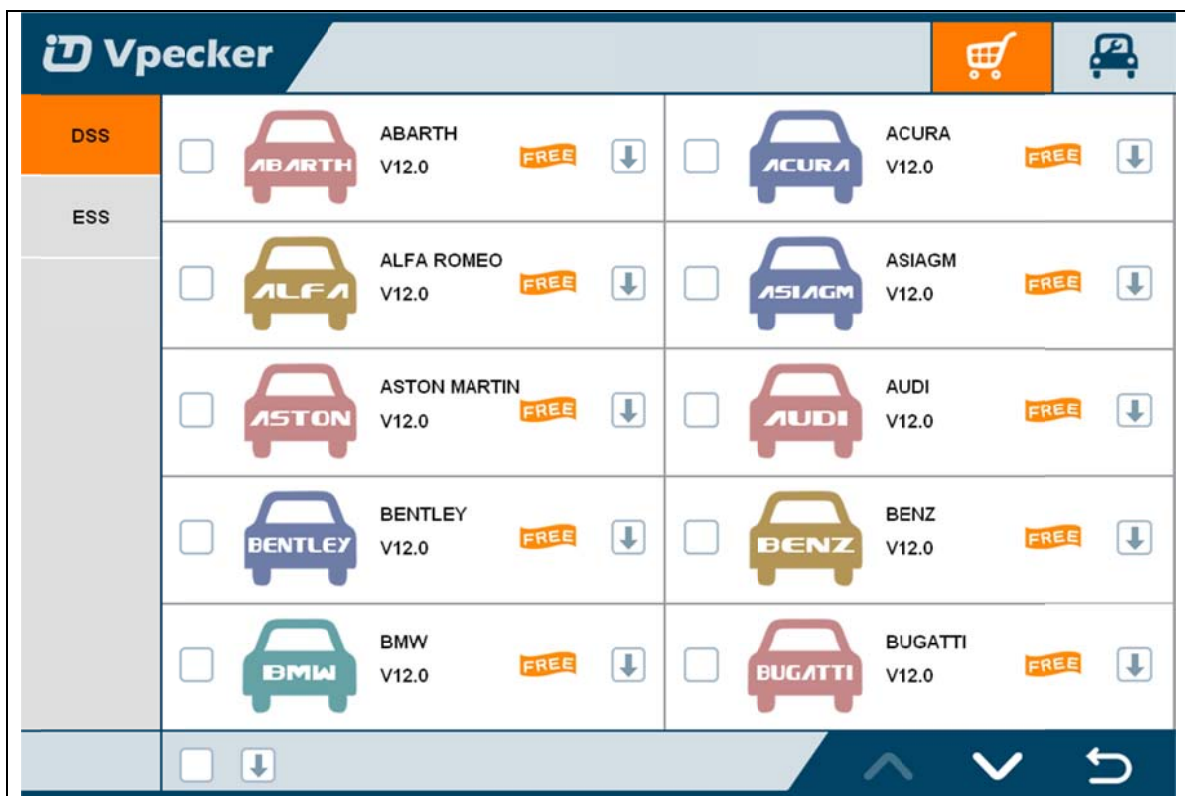


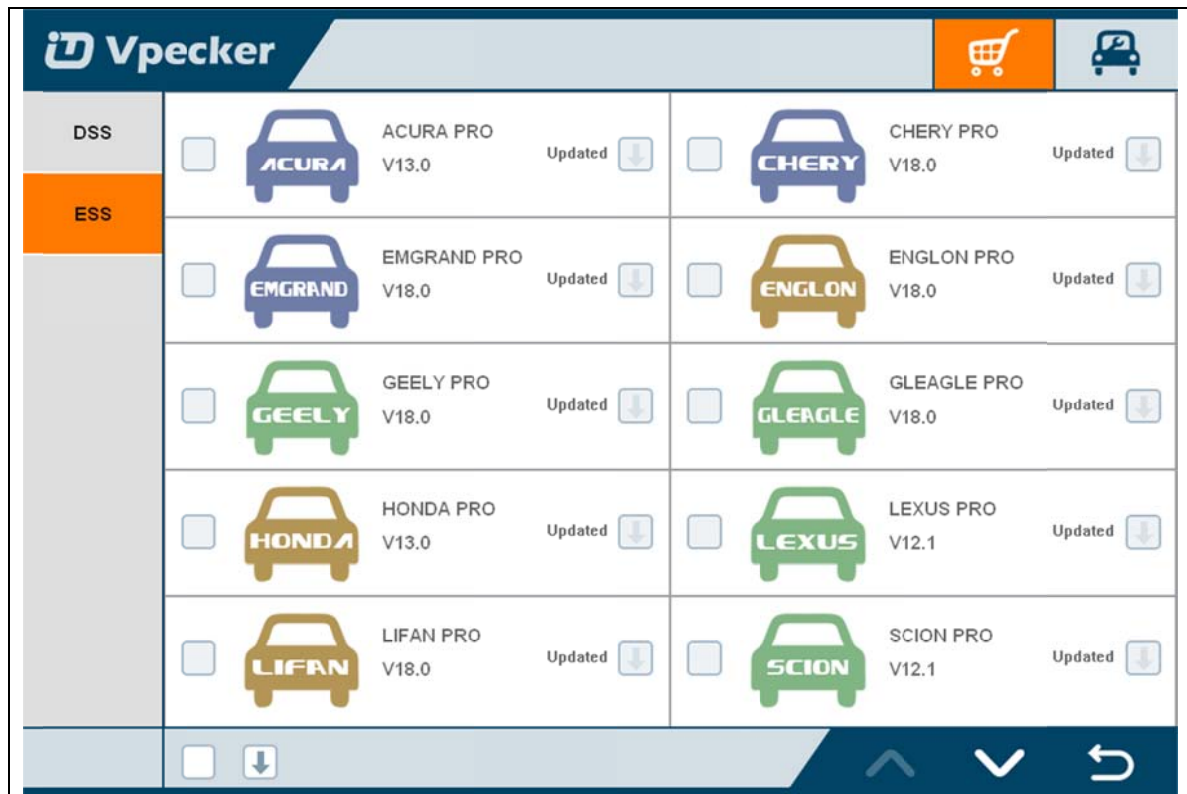


## 4.1 Online store

### Features

- Automatic Wi-Fi updates available in new software releases by smart upgrade mode.
- Wi-Fi internet capability allows for wireless access throughout the workshop.
- Extremely easy-to-use with touch-screen operation and intuitive operation in the windows.





## 4.2 Diagnosis service system

### 4.2.1 Features

- Extensive vehicle coverage for more than 75 US domestic, European, Asian, Australian and Chinese vehicles makes.
- Complete function capability including live data, ECU programming and so many others.
- Unparalleled OBDII functionalities-support ALL 5 OBDII protocols and ALL 10 test modes.
- Can check out the year and model of the vehicles automatically and quickly.
- The genuine Windows 8 and Windows 10 operating systems allows for more stable performances, better compatibility and expandability

Vpecker

<b>AMERICA</b>					
ASIA	CHRYSLER	FORD(AMERICA)	GM	JEEP	SCION
AUSTRALIA					
CHINA					
EUROPE					
OBII					
	<span style="font-size: 1.5em; vertical-align: middle;">^</span> <span style="font-size: 1.5em; vertical-align: middle;">v</span> <span style="font-size: 1.5em; vertical-align: middle;">&gt;&gt;</span> <span style="font-size: 1.5em; vertical-align: middle;">↶</span>				

---

Vpecker

<b>AMERICA</b>					
ASIA	ACURA	ASIAGM	DAEWOO	DAIHATSU	FUSO
AUSTRALIA					
CHINA					
EUROPE	HONDA	HYUNDAI	INFINITI	ISUZU	KIA
OBII					
	LEXUS	MAZDA	MITSUBISHI	NISSAN	PERODUA
	<span style="font-size: 1.5em; vertical-align: middle;">^</span> <span style="font-size: 1.5em; vertical-align: middle;">v</span> <span style="font-size: 1.5em; vertical-align: middle;">&gt;&gt;</span> <span style="font-size: 1.5em; vertical-align: middle;">↶</span>				

**Vpecker**

AMERICA					
ASIA					
AUSTRALIA	FORD(AUSTRALIA)	HOLDEN			
CHINA					
EUROPE					
OBDII					

---

**Vpecker**

AMERICA					
ASIA					
AUSTRALIA	BYD	CHANGAN	CHANGHE	CHERY	EMGRAND
CHINA					
EUROPE	ENGLON	FOTON	GEELY	GLEAGLE	GWM
OBDII					
	HBSH	HUACHEN	LIFAN	WULING	YUAN



### 4.2.2 Vehicle coverage

US domestic: CHRYSLER, FORD, GM, JEEP, SCION, etc.

European: ABARTH, ALFA, ASTON, AUDI, BENTLEY, BENZ, BMW, BUGATTI, CITROEN, DACIA, FERRARI, FIAT, FORDEU, JAGUAR, LAMBORGHINI, LANCIA, LANDROVER, MASERTI, MINI, OPEL, PEUGEOT, PORSCHE, RENAULT, SAAB, SEAT, SKODA, SMART, VAUXHALL, VOLVO, VW, etc.

Asian: ACURA, ASIAGM, DAEWOO, DAIHATSU, HONDA, HYUNDAI, INFINITI, ISUZU, KIA, LEXUS, MAZDA, MITSUBISHI, NISSAN, PERODUA, PROTON, SSANGYONG, SUBARU, SUZUKI, TOYOTA, etc.

Australian: HOLDEN and FORD(AUSTRALIA).

China: BYD, CHANGAN, CHANGHE, CHERY, EMGRAND, ENGLON, FOTON, GEELY, GLEAGLE, GWM, HBSH, HUACHEN, LIFAN, WULING, YUAN, etc.

OBDII vehicle: CHRYSLER, FORD, GM, TOYOTA, LEXUS, HONDA, HYUNDAI, KIA, MAZDA, MITSUBISHI, NISSAN, SUBARU, SUZUKI, ABARTH, ASTON MARTIN, BUGATTI, FERRARI, LAMBORGHINI, MASERTI, BENZ, BMW, VW, AUDI, SEAT, SKODA, PORSCHE, JAGUAR, LANDROVER, VOLVO, SAAB, ALFA, etc.

### **4.2.3 System coverage**

ME-Motor electronics, CDI-Common Rail Diesel Injection, ETC-Electronic transmission control, ESM-Electronic selector module, SBC- Sensotronic Brake Control, ESP-Electronic stability program, BAS-Brake assist, Suspension, TPC-Tire pressure monitor, Airbag, CGW-Central gateway, EIS-Electronic ignition switch, OCP-Overhead control panel, UCP-Upper control panel, XALWA-Xenon headlamp, HRA-Headlamp range control, ATA-Anti-theft alarm system, IC-Instrument cluster, ASSYST-Active Service System, SCM-Steering column module, EPS-Electrical power steering, PTS- Parktronic system, EPB-Electric parking brake, COMAND/AUDIO, CD/DVD, TV tuner, CTEL-Cellular telephone, DCM-Door control module, ESA driver-Electric seat adjustment driver, ESA passenger-Electric

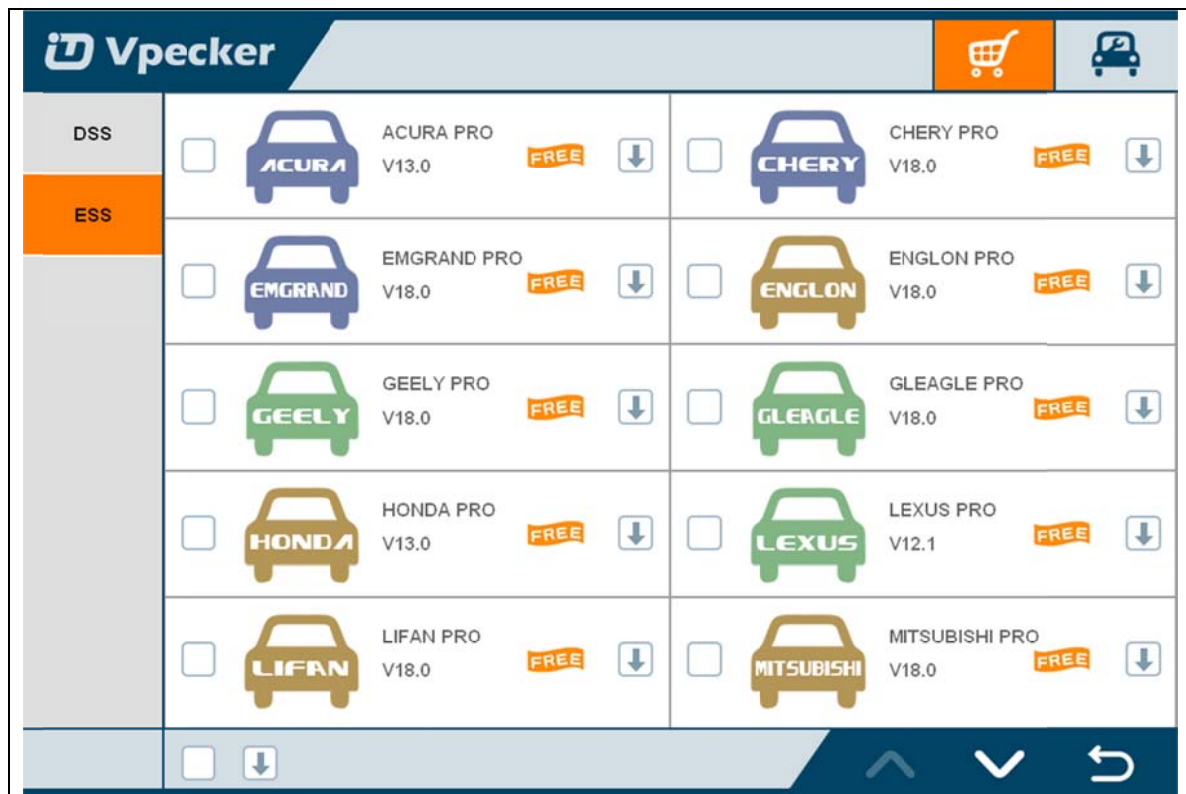
seat adjustment passenger, AAC-Air conditioning, WSS-Weight sensor system, SVMCM-Special vehicle multifunction control module, etc.

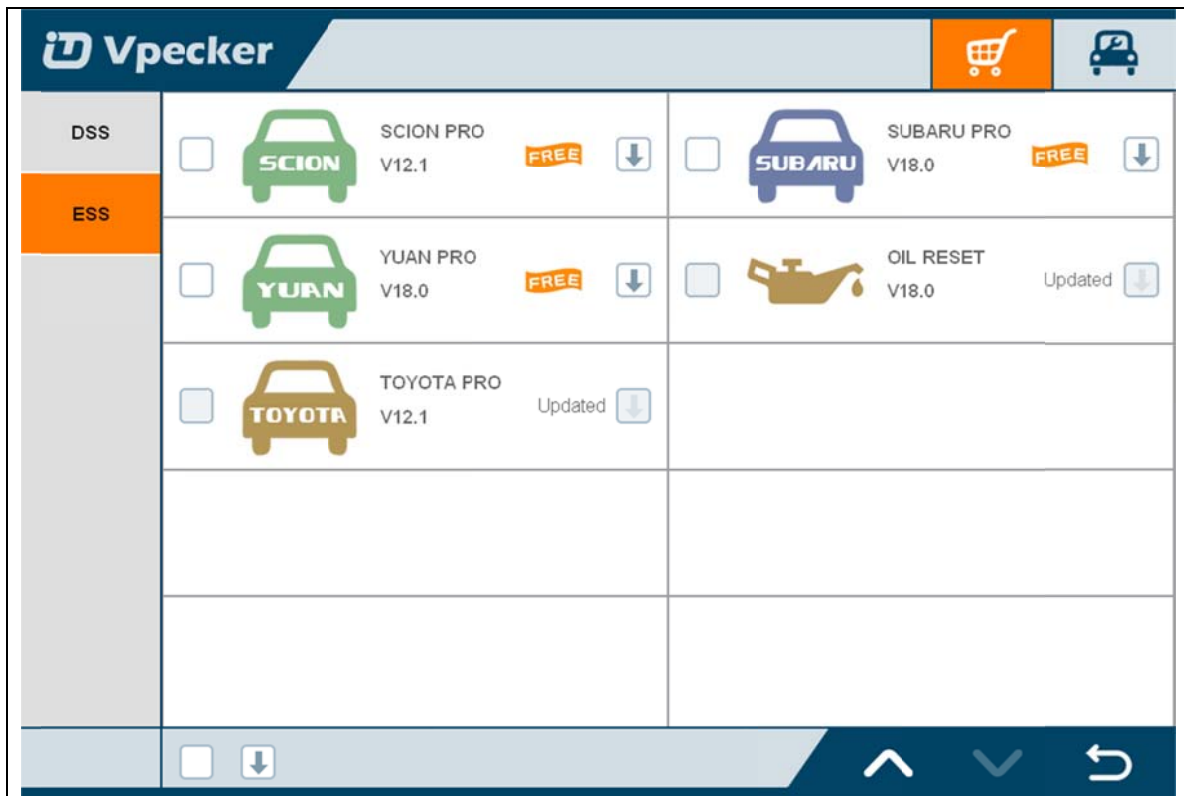
#### 4.2.4 Function coverage

Quick Test, Read ECU Info., Read DTCs, Erase DTCs, Clear learning value, Data Stream, Actuators, Read freeze frame data, Read/Write VIN, Basic Reset, Control unit adaptations, Throttle adaptations, Air bleeding, Level calibration, Theft alarm Reset, Key programming, Oil change, Idle speed learning, Idle speed Adjustment, Ignition timing adjustment, Camshaft timing control learning, Maintenance functions, ECU Initial startup, ECU initialization, etc.

### 4.3 Expert service system

Expert service system, according to customers' requirement list, focus on special functions such as Oil change, Idle speed learning, Idle speed Adjustment, Air bleeding, Level calibration, Throttle adaptations, Steering Angle Sensor Calibration, EPB Reset, DPF Reset, ECU Initial startup, ECU initialization, etc.



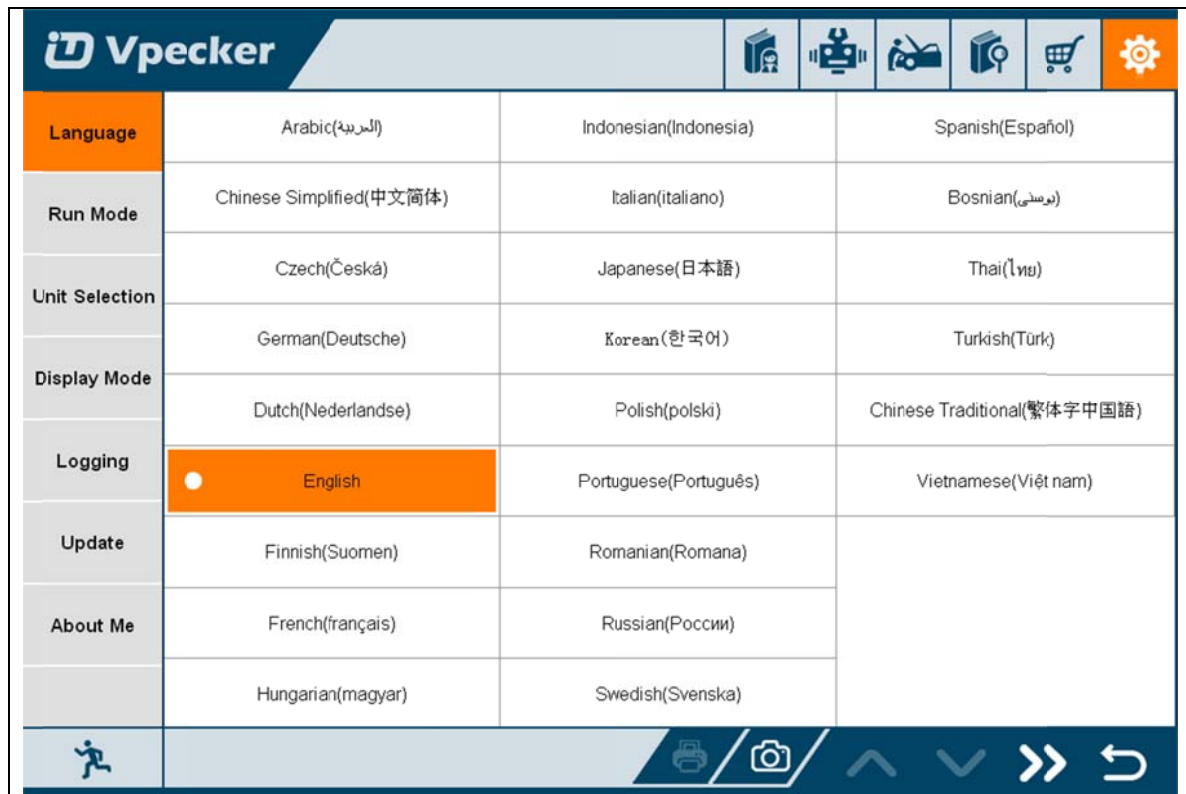


## 4.4 Settings

### 4.4.1 Language

Choose the language you need, as the picture shows:



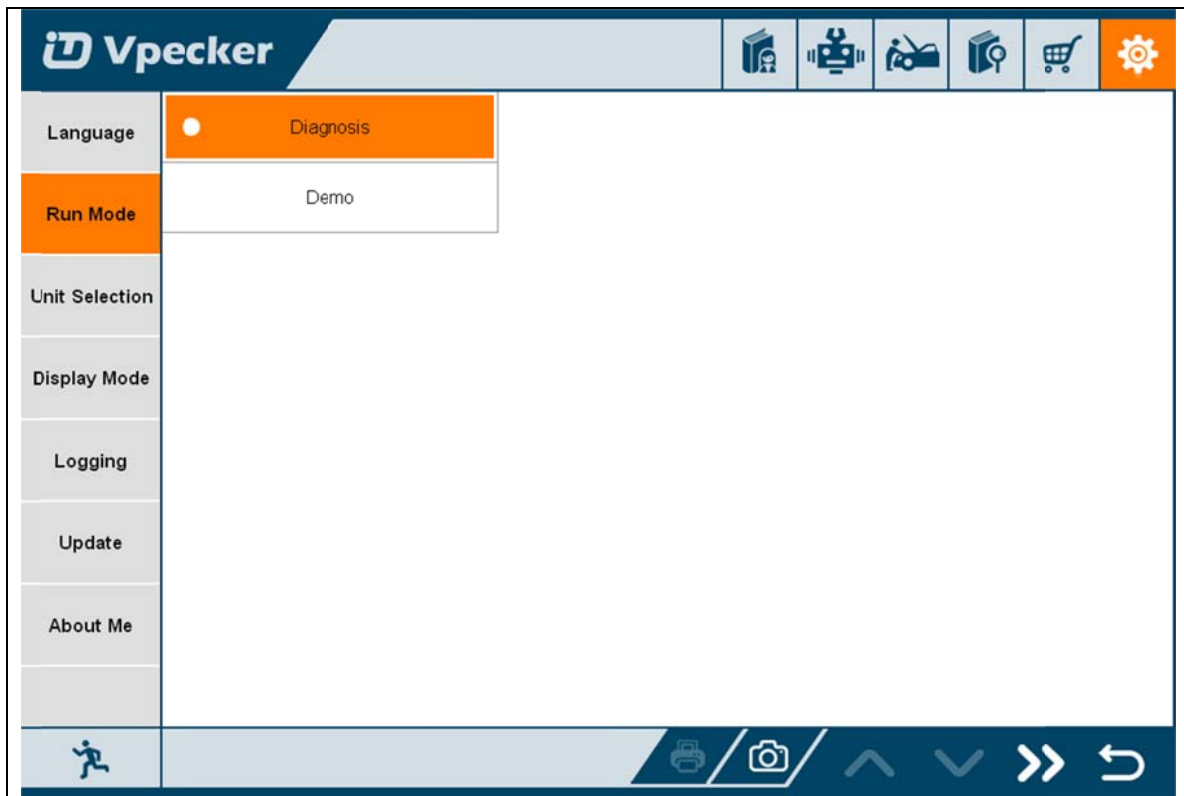


Language coverage: Supporting more 25 languages, including Chinese (Simplified), English, Chinese (Traditional), Japanese, German, Russian, French, Italian, Spanish, Portuguese, Polish, Turkish, Dutch, Hungarian, Korean, Czech, Arabic, Indonesian, Persian, Thai, Vietnamese, Finnish, Swedish, Romanian, Bosnian, etc.

Note: It will take English by default.

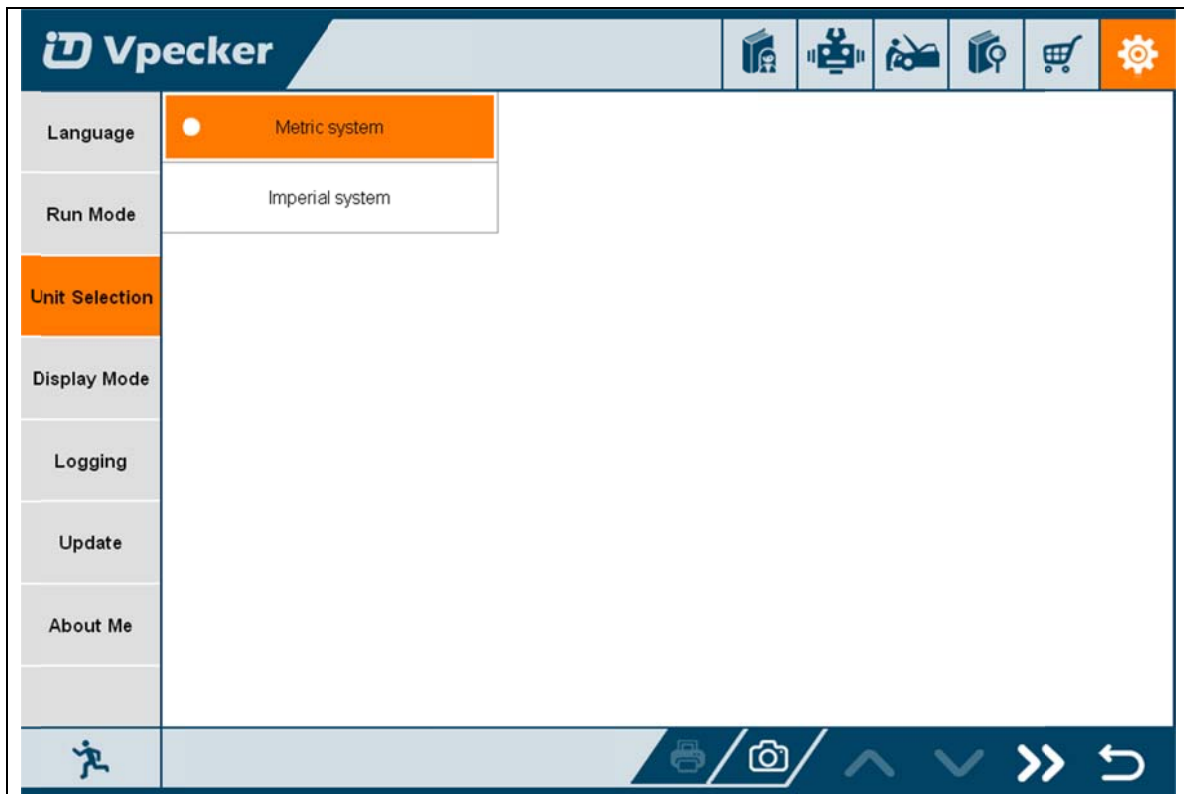
#### 4.4.2 Run mode

It has Demo, so even VPECKER is not connected, it can simulate how VPECKER works. As the picture shows:



### 4.4.3 Unit selection

Unit switch between Metric and Imperial system:



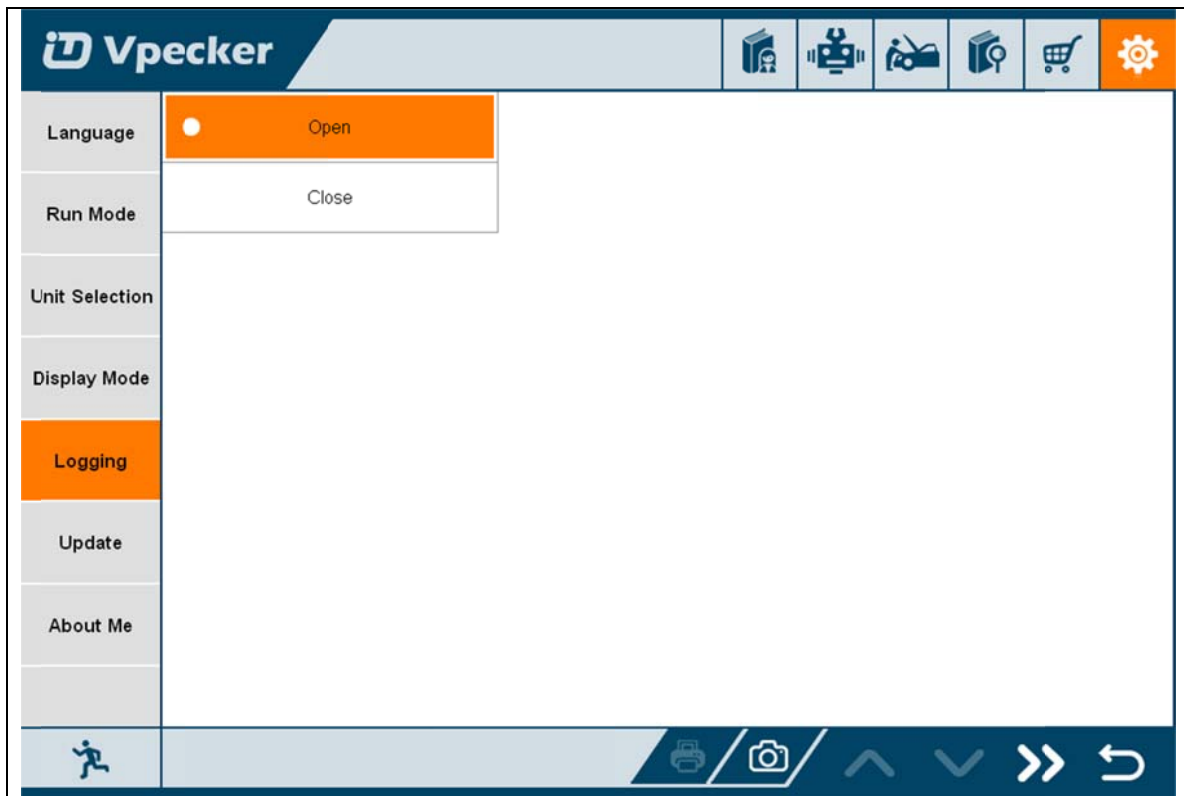
#### 4.4.4 Display mode

Display modes between Full Screen and Fixed Size(1024 x 700):



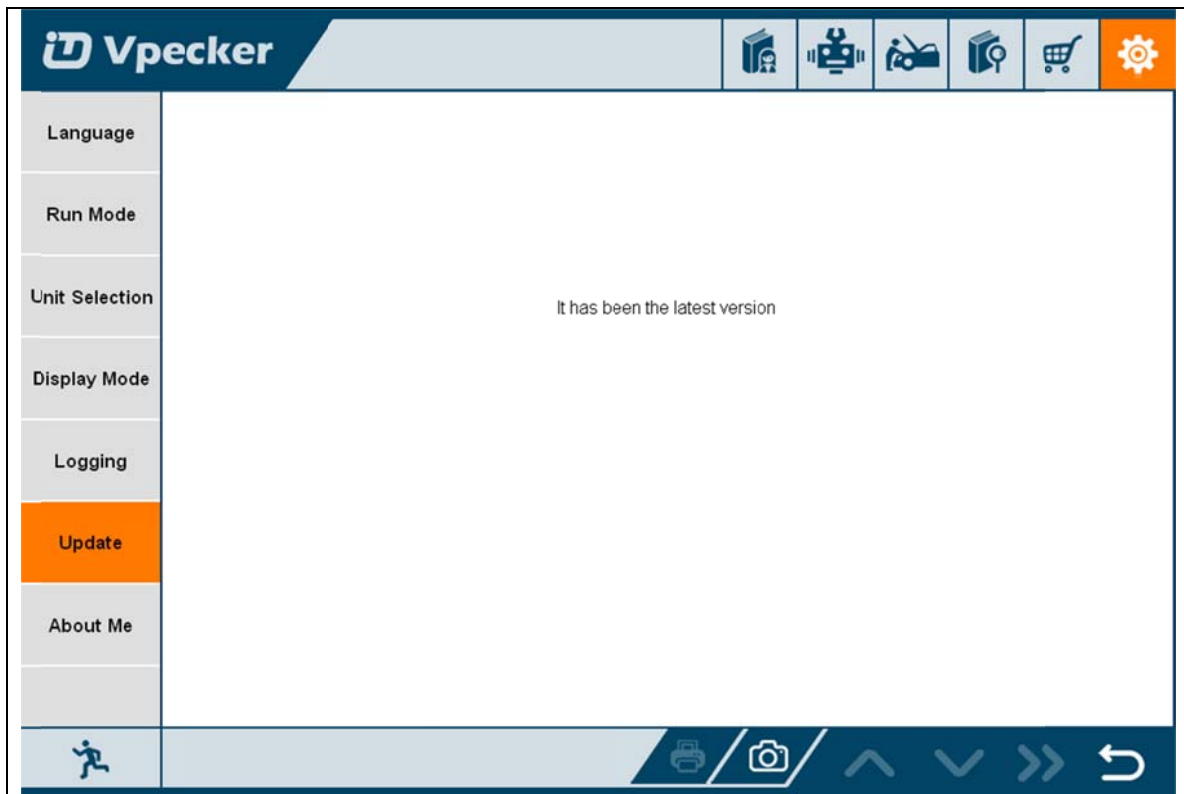
#### 4.4.5 Logging

Logging function is available; it can log the data of vehicle communication.



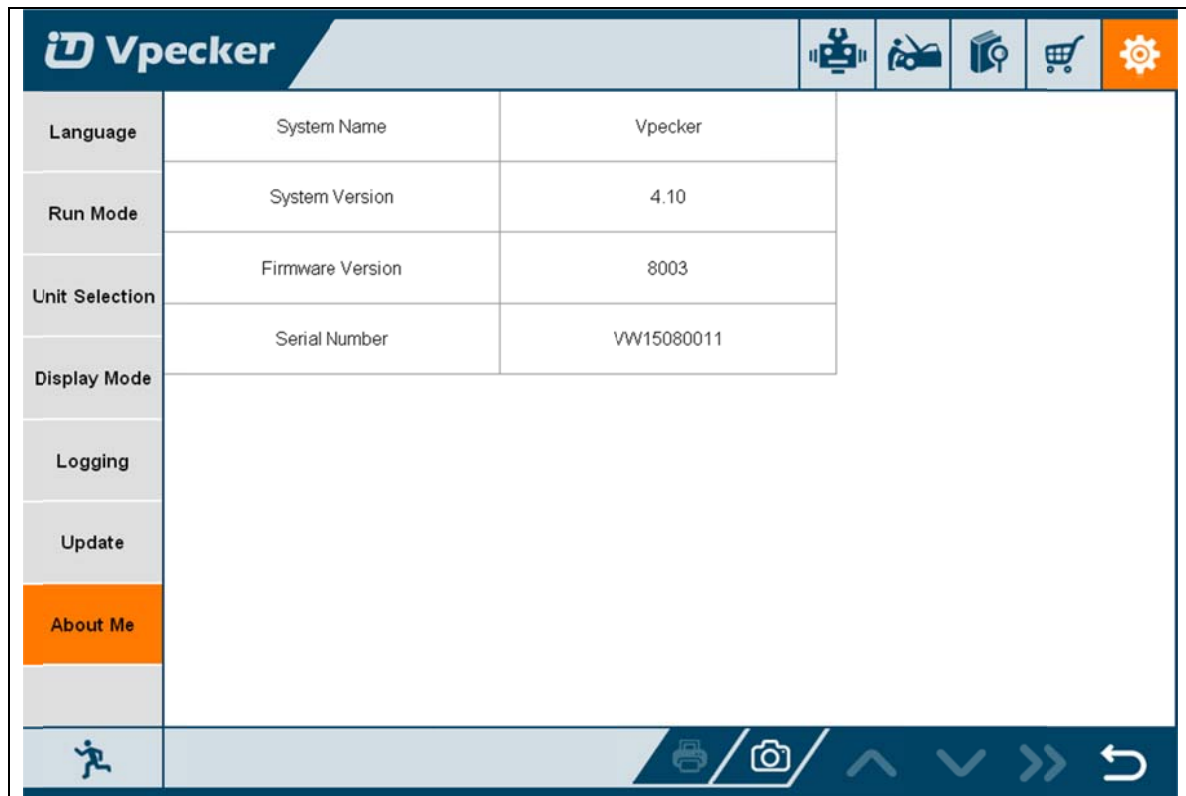
#### 4.4.5 Update

If there is a new version, it can automatically prompt to update.



#### 4.4.6 About me

Automatically identify VPECKER and VPECKER version information, when connection has problem (Wi-Fi or Bluetooth), and it can't read VPECKER Hardware version, usually, it shows as "Unknown" or "---"; If the connection is OK, it shows hardware version. As the picture shows:



#### 4.5 DTC query

DTC query function is a DIY function, users can query, modify and create OBD DTCs by themselves requirement in local DTCs, and users can synchronize to TDINTEL company cloud server thought the internet too.

**Vpecker** **AUTO DTC QUERY SYSTEM**

Please input a DTC code and click the search button

🔍

# P0123

**Systems**

- P=Powertrain
- C=Chassis
- B=Body
- U=Network

**Code Type Generic(SAE):**

P0, P2, P34-39  
B0, B3  
C0, C3  
U0, U3

**Manufacturer Specific:**

P1, P30-P33  
B1, B2  
C1, C2  
U1, U2

**Sub-systems:**

- 1=Fuel and Air Metering
- 2=Fuel and Air Metering
- 3=Ignition System or Engine Misfire
- 4=Auxiliary Emission Controls
- 5=Vehicle Speed Control and Idle Controls
- 6=Computer Output Circuits
- 7=Transmission Controls
- 8=Transmission Controls

Identifying specific malfunctioning section of the systems

🏃
⬆
⬇
👤

**Vpecker** **AUTO DTC QUERY SYSTEM**

Please input a DTC code and click the search button

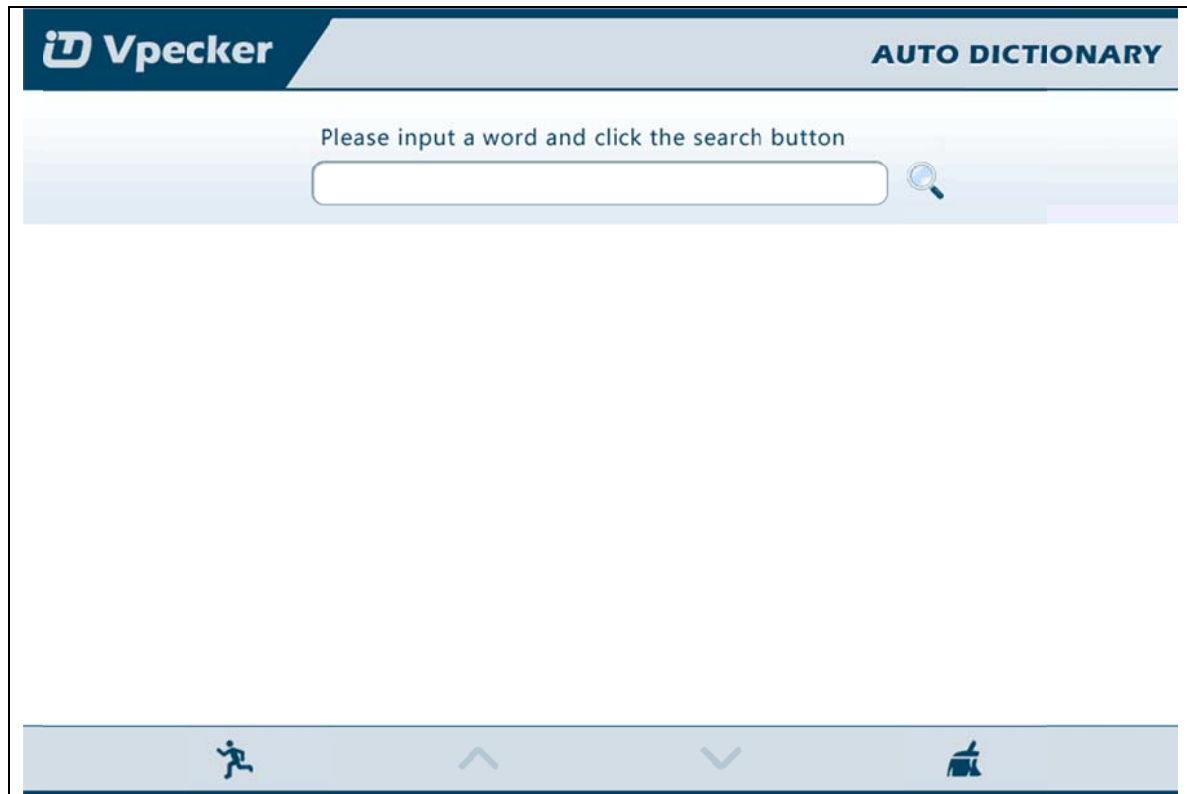
🔍

DTC	Vehicle	Description
P1111	GM_HOLDEN	Intake air temperature sensor signal high
P1111	FORD	Code unallocated
P1111	JAGUAR	Code unallocated
P1111	BMW	Radiator outlet coolant temperature sensor signal low
P1111	VOLVO	Ambient air temperature sensor signal error
P1111	ISUZU	Intake air temperature sensor signal high
P1111	SUBARU	MAP/Barometric pressure sensor signal high
P1111	MAZDA	Code unallocated
P1111	HONDA	Intake air temperature sensor signal high
P1111	TOYOTA	Converter clutch override sensor signal shorted
P1111	NISSAN	Intake variable cam timing solenoid circuit malfunction

🏃
⬆
⬇
👤

## 4.6 Dictionary

Dictionary function is a DIY function, users can query, modify and create AUTO terms by themselves requirement in local terms, and users can synchronize to TDINTEL company cloud server through the internet too.



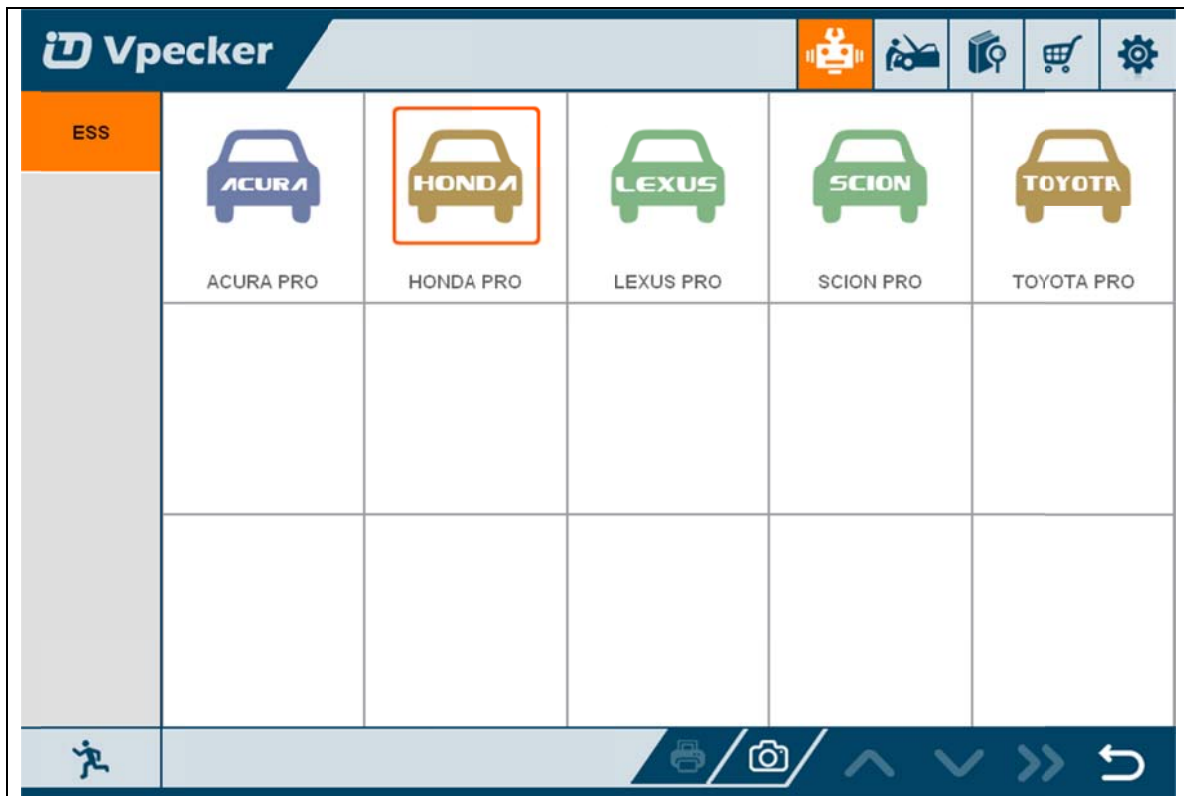
## 4.7 Example

### 4.7.1 Communication

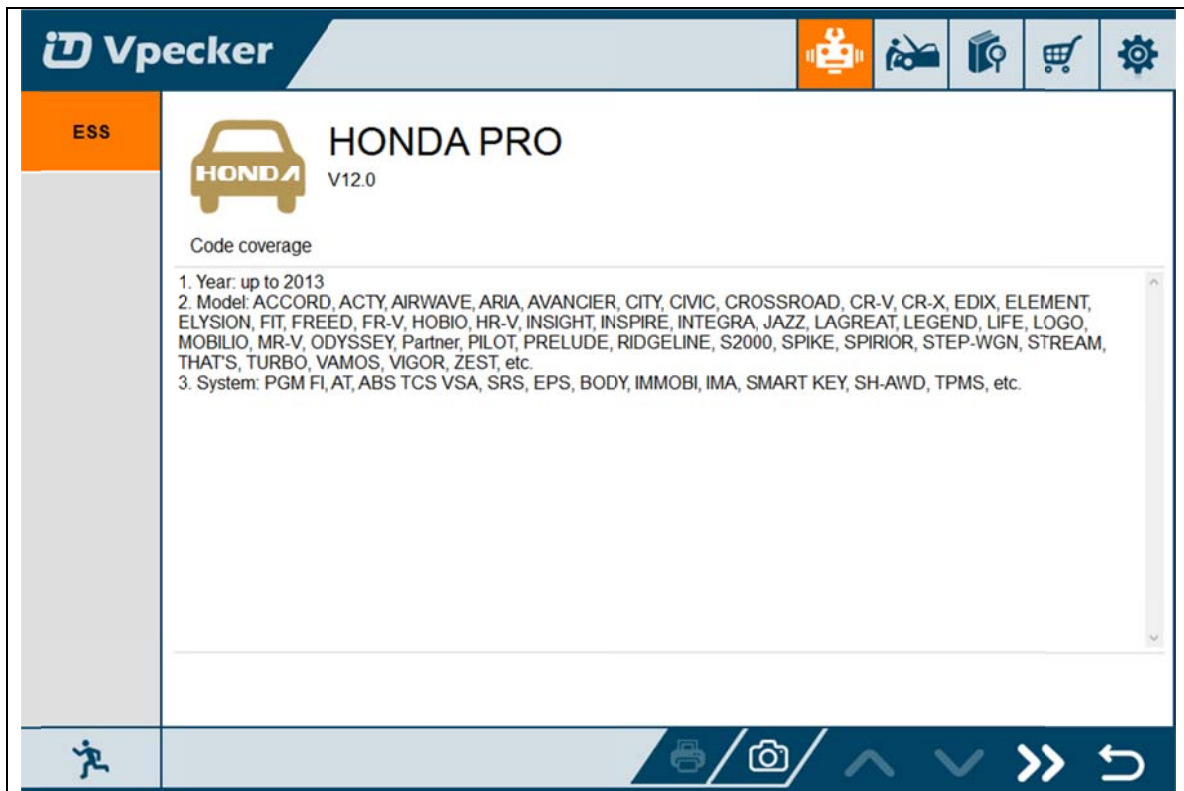
Please connect VPECKER with the car. After connection, the indication light turn on red.

Please check the connection of Wi-Fi or Bluetooth, if connect successfully, the indication light will turn to blue.

Run the VPECKER, and start to diagnose.

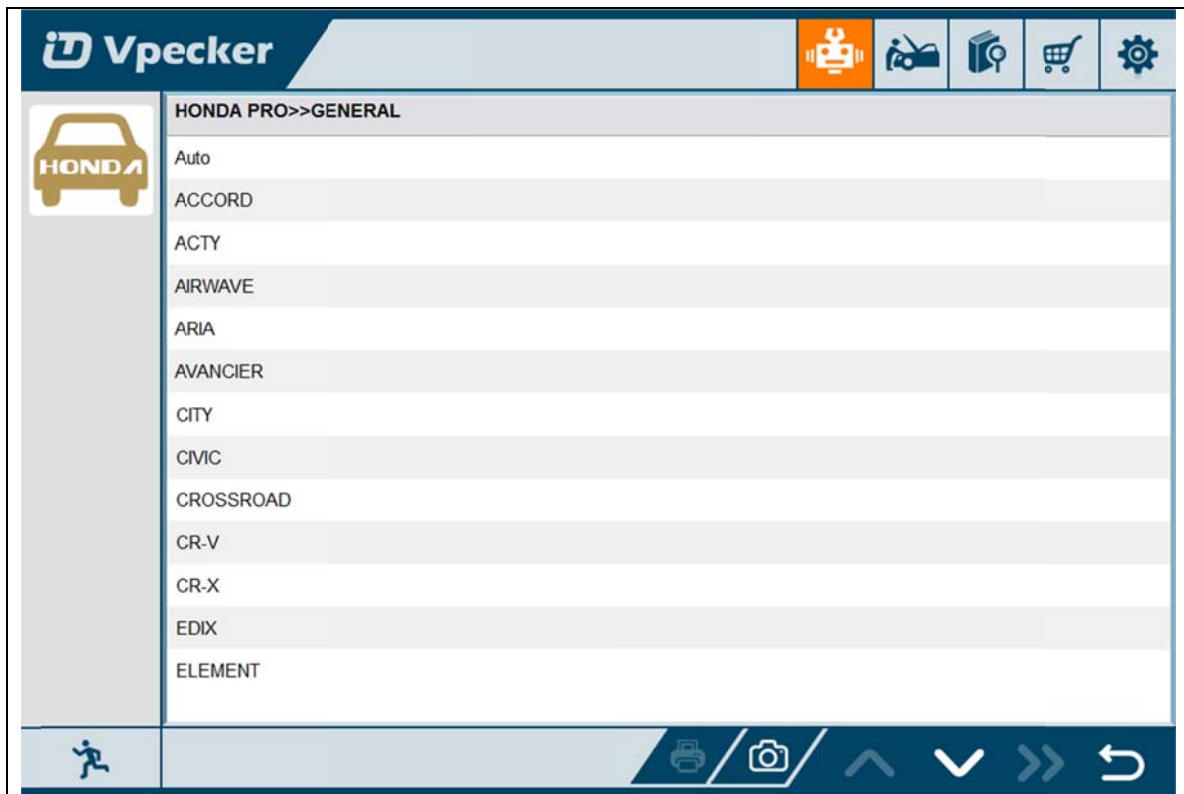
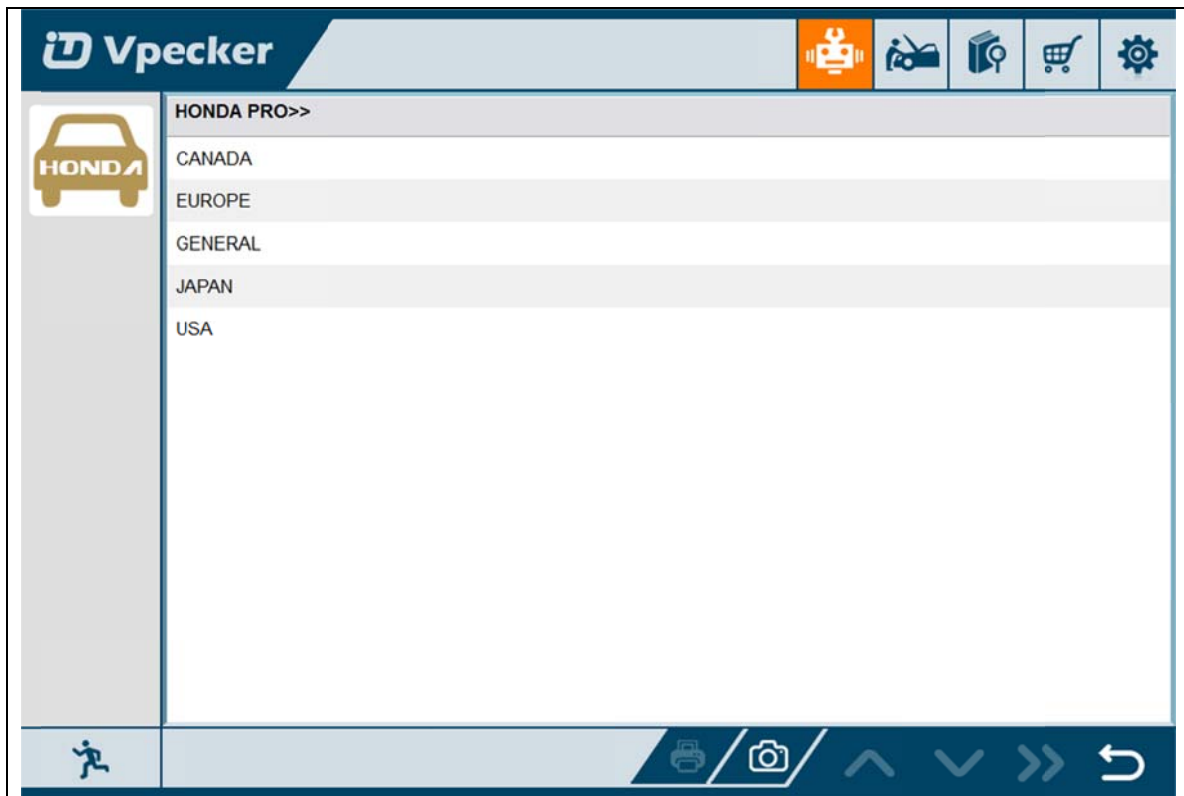


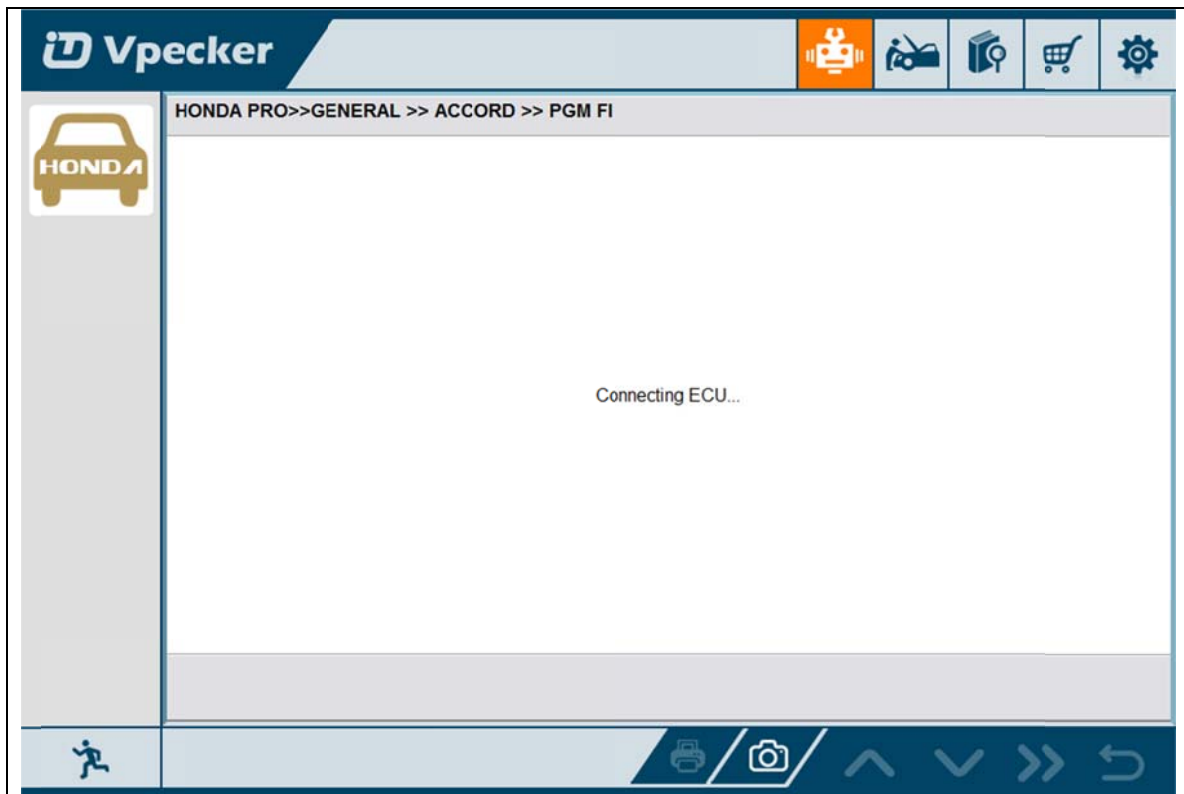
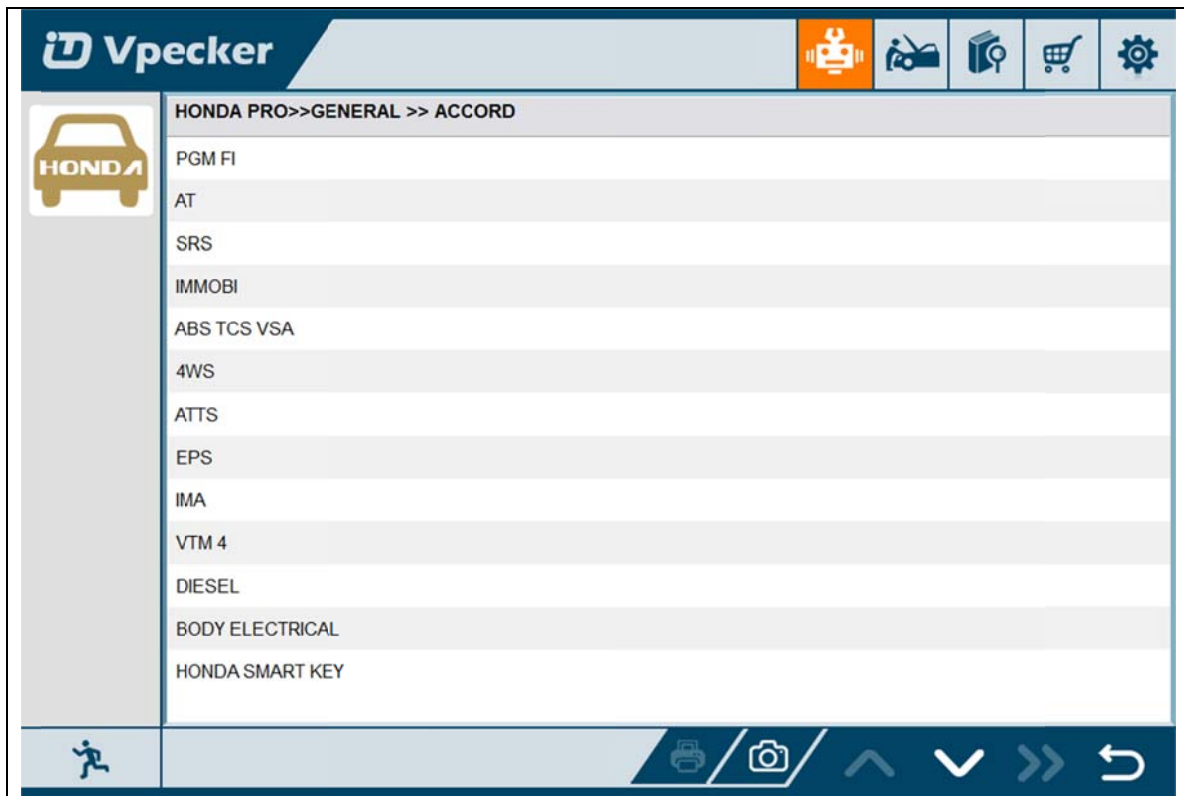
Choose the vehicle you need, and enter the diagnostic system:

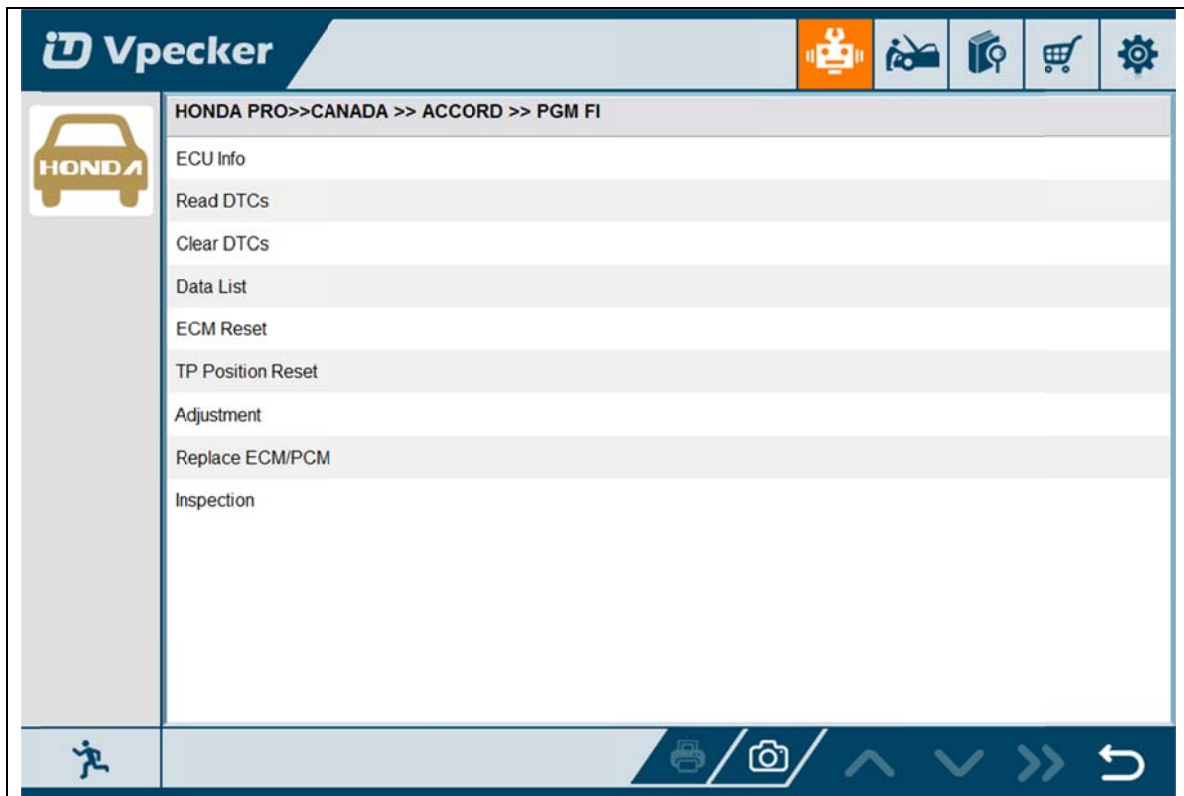


Please press next page.

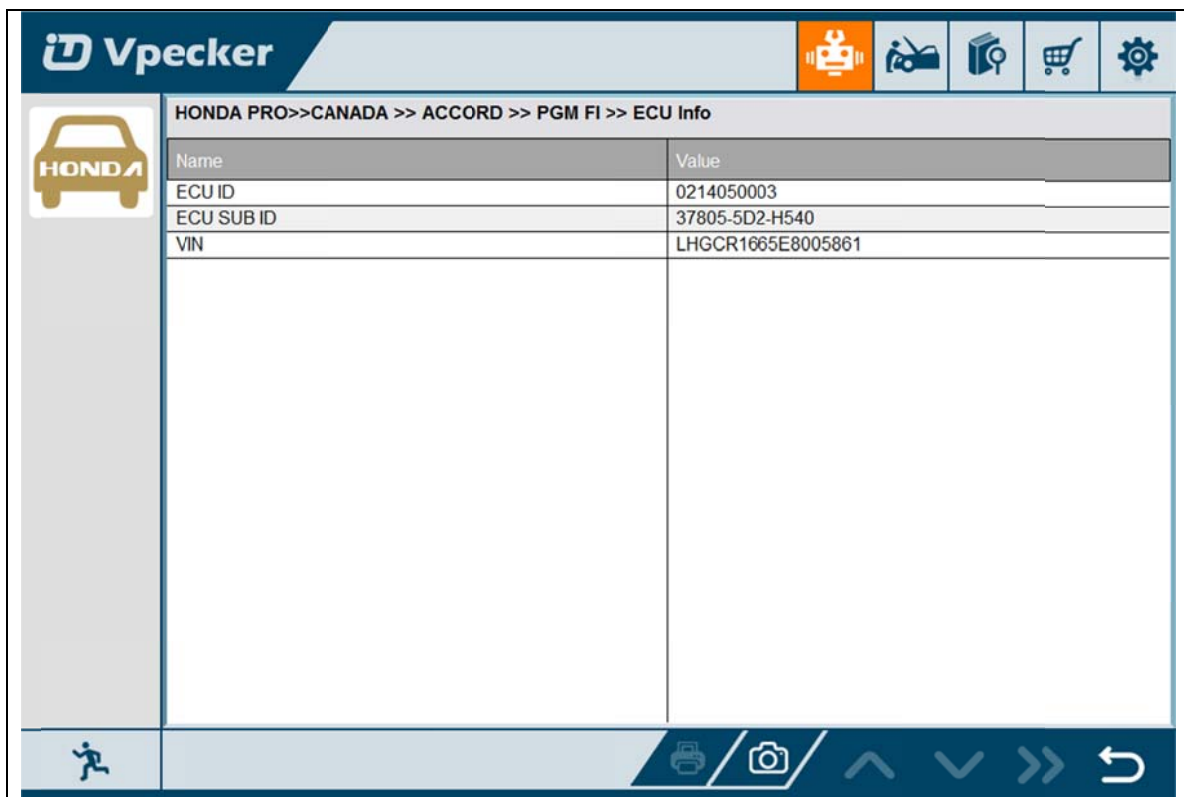




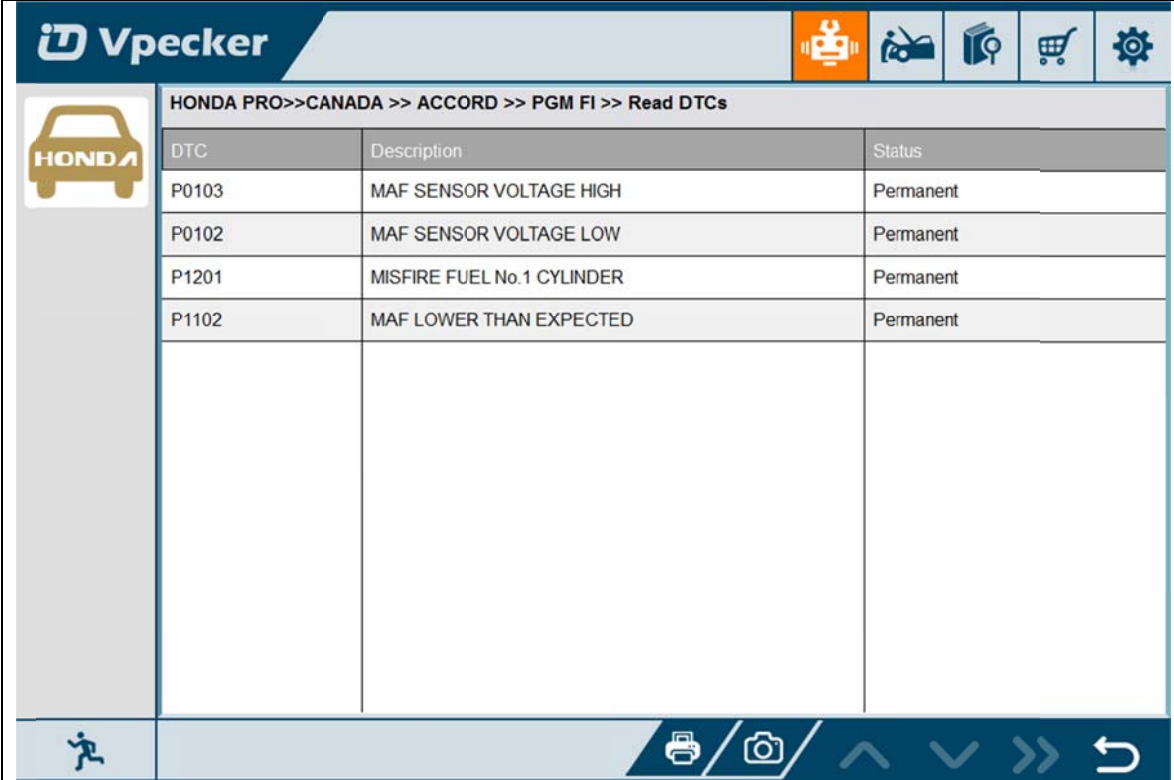




#### 4.7.2 Read ECU information



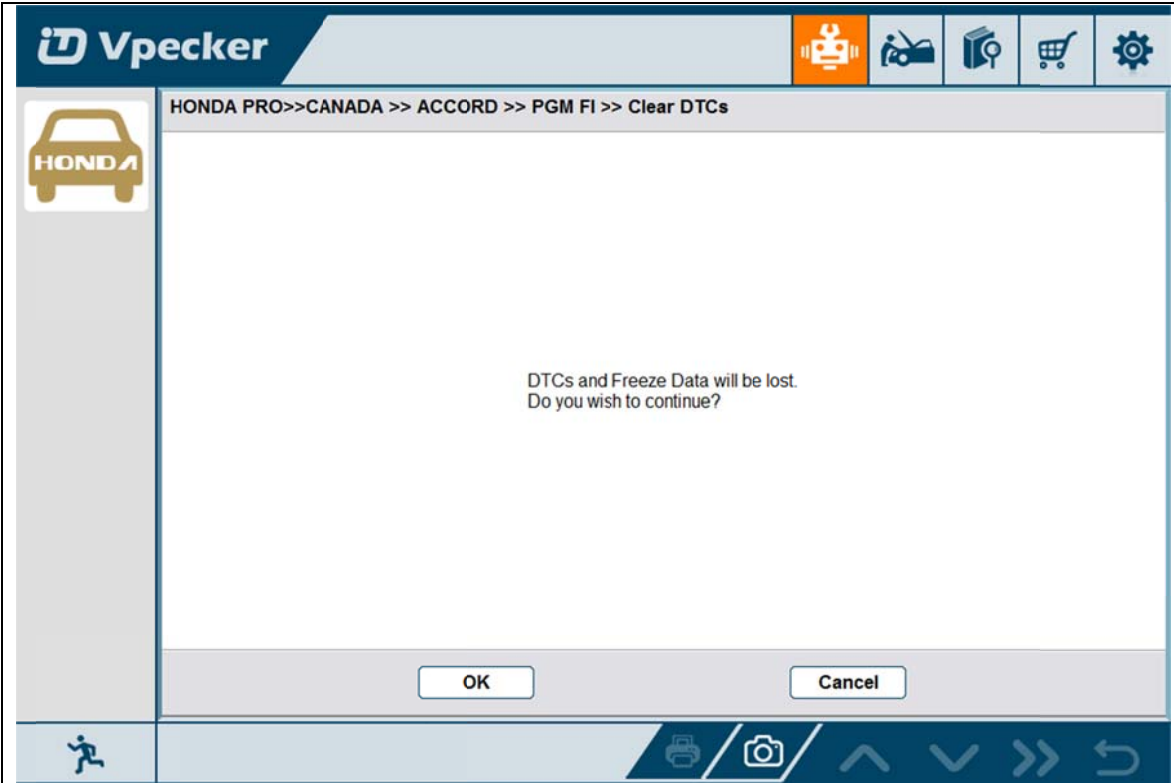
### 4.7.3 Read DTCs



HONDA PRO>>CANADA >> ACCORD >> PGM FI >> Read DTCs

DTC	Description	Status
P0103	MAF SENSOR VOLTAGE HIGH	Permanent
P0102	MAF SENSOR VOLTAGE LOW	Permanent
P1201	MISFIRE FUEL No.1 CYLINDER	Permanent
P1102	MAF LOWER THAN EXPECTED	Permanent

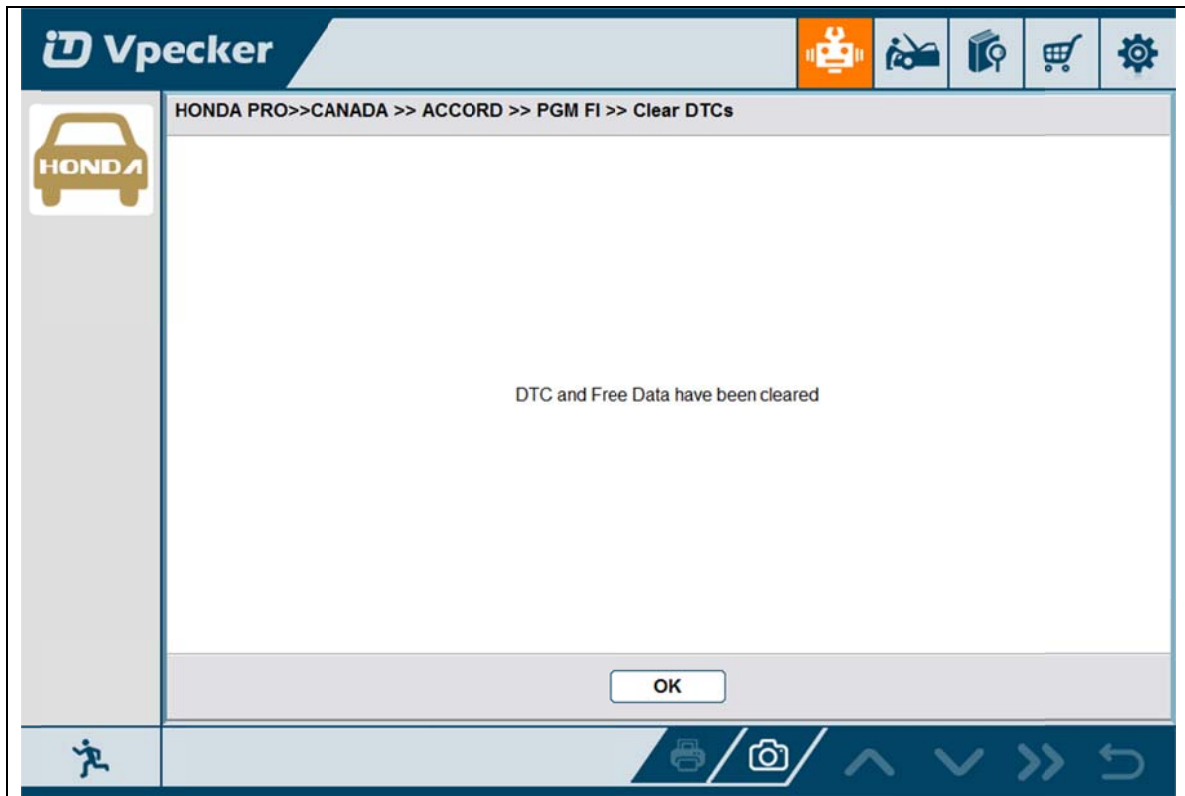
### 4.7.4 Earse DTCs



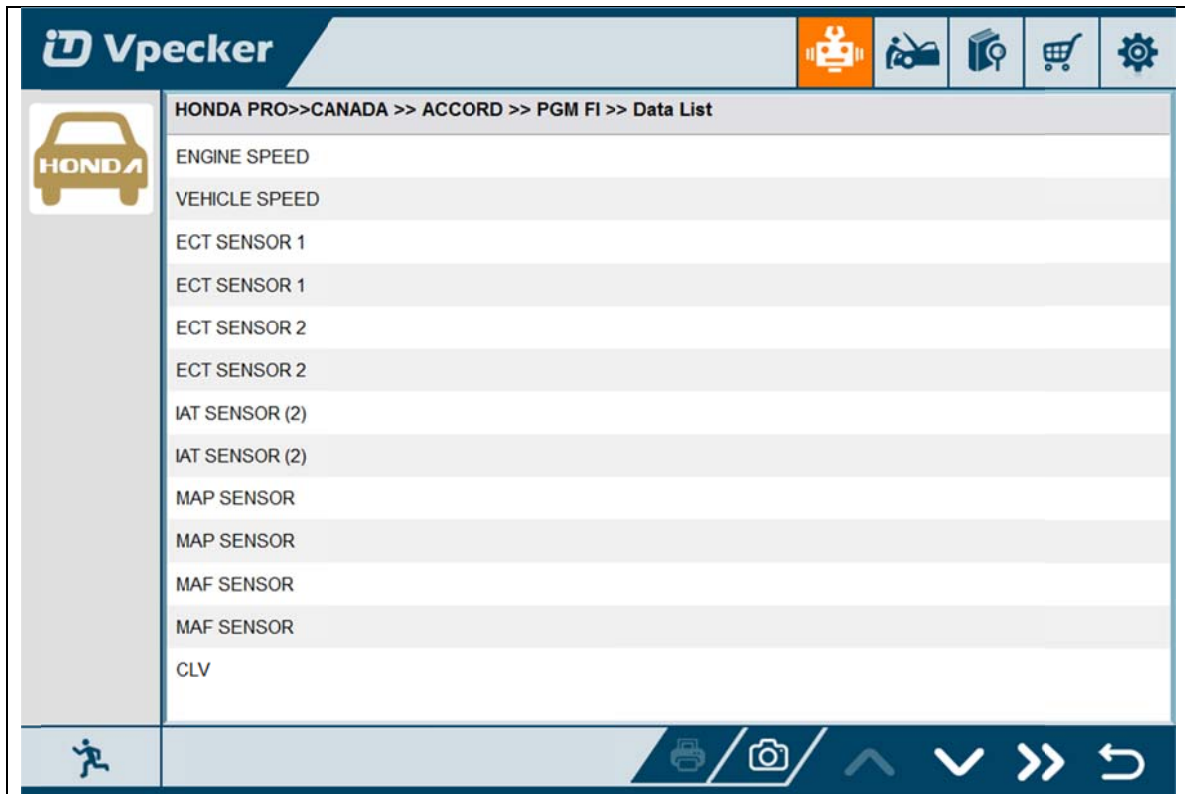
HONDA PRO>>CANADA >> ACCORD >> PGM FI >> Clear DTCs

DTCs and Freeze Data will be lost.  
Do you wish to continue?

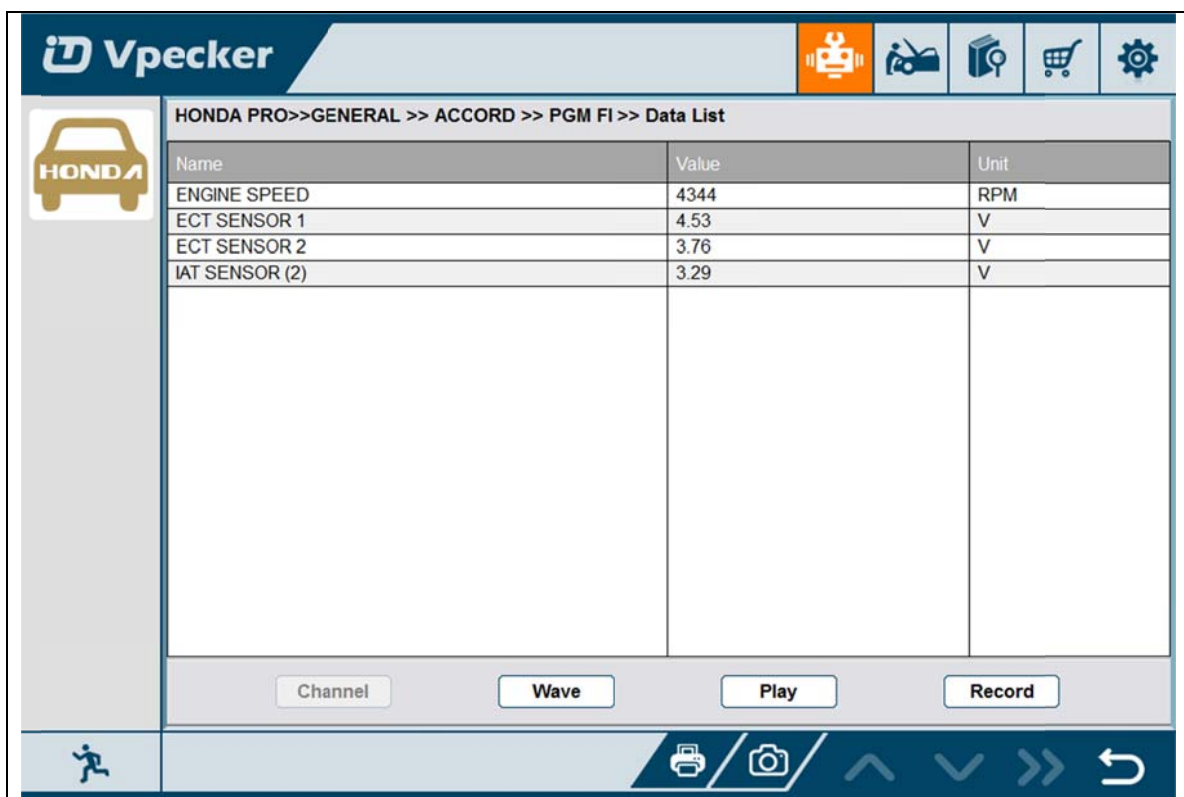
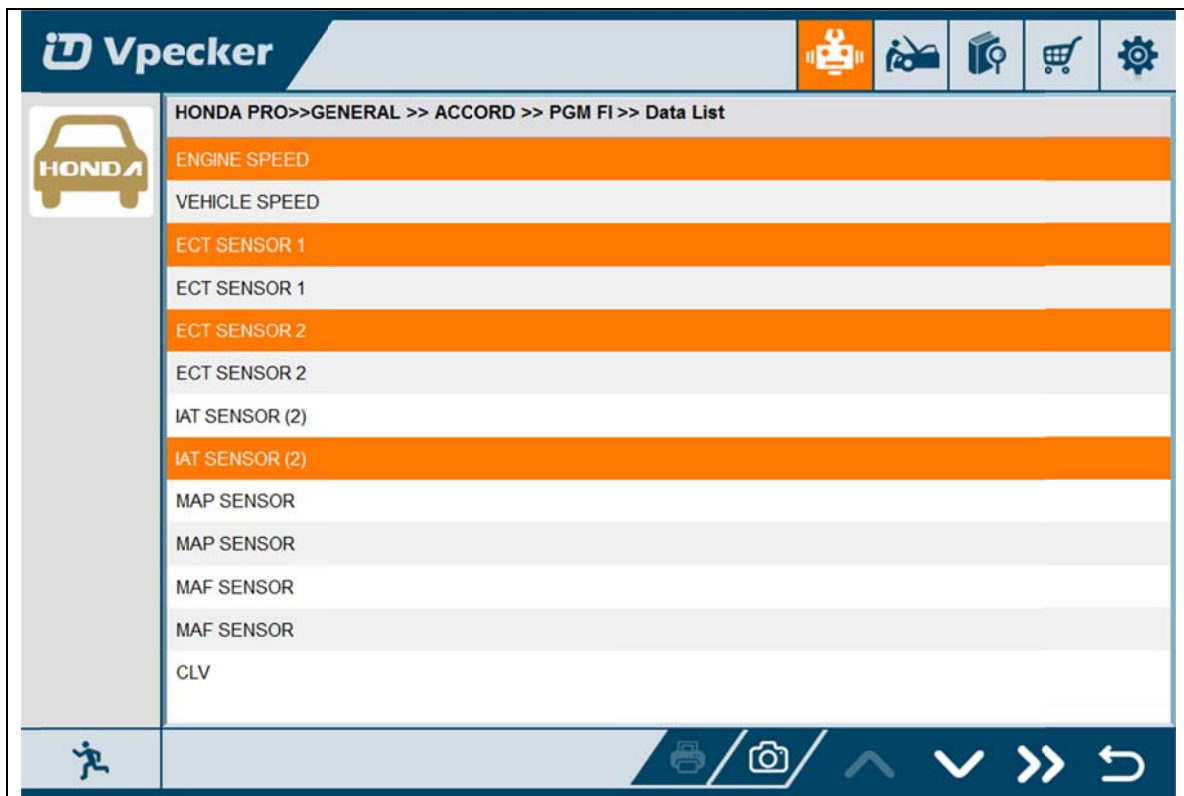
OK Cancel



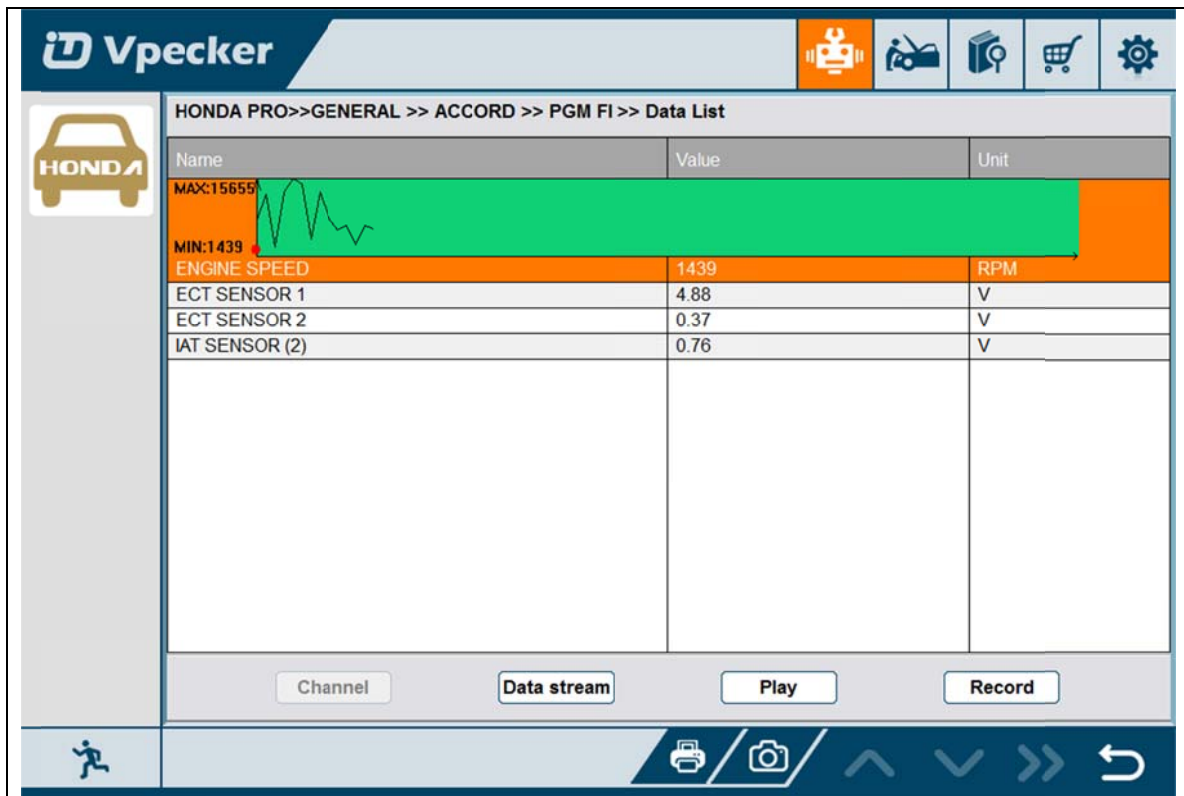
#### 4.7.5 Data List



Select some items:

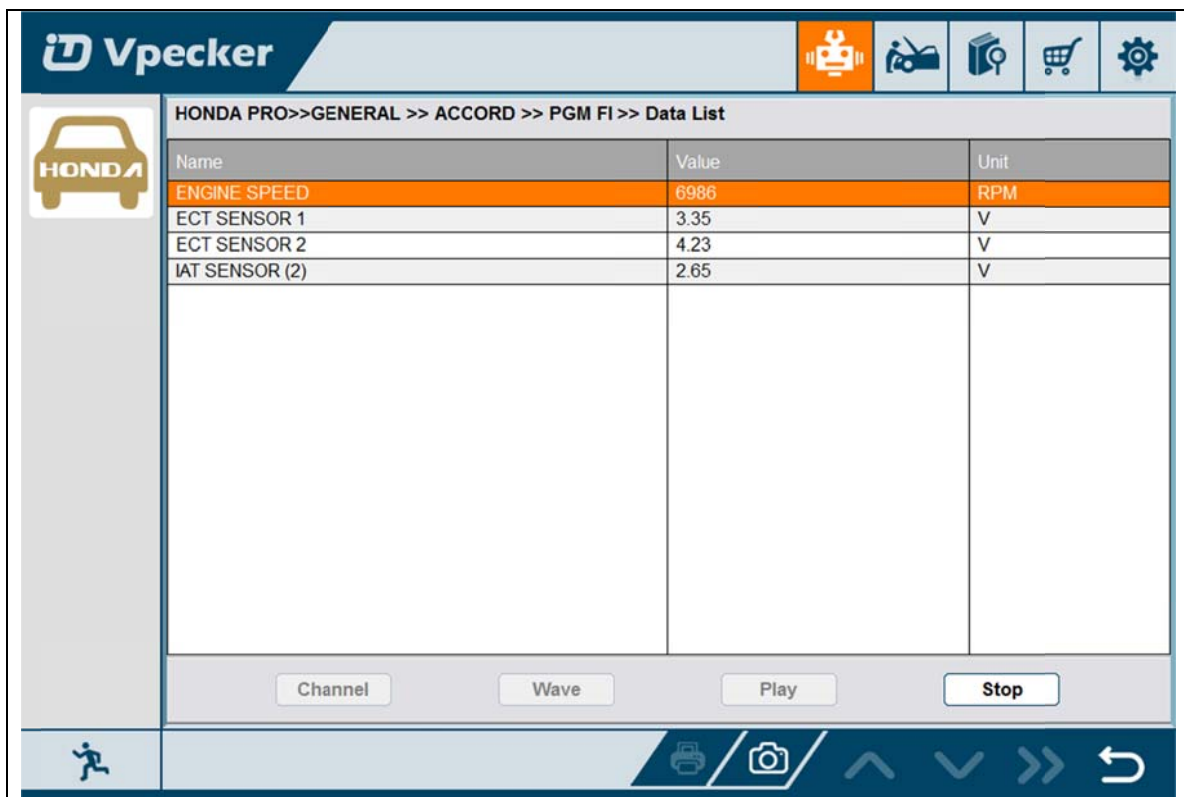


Select the 1st item, and click the Wave button:

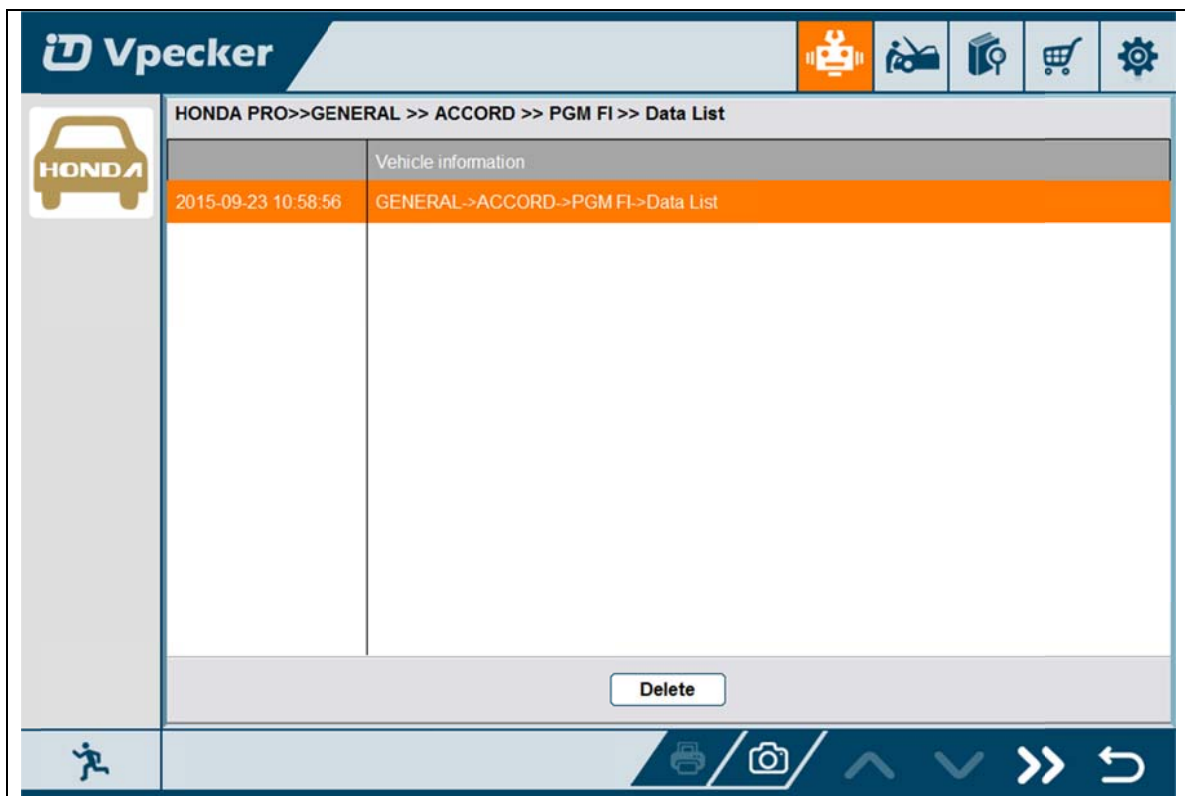
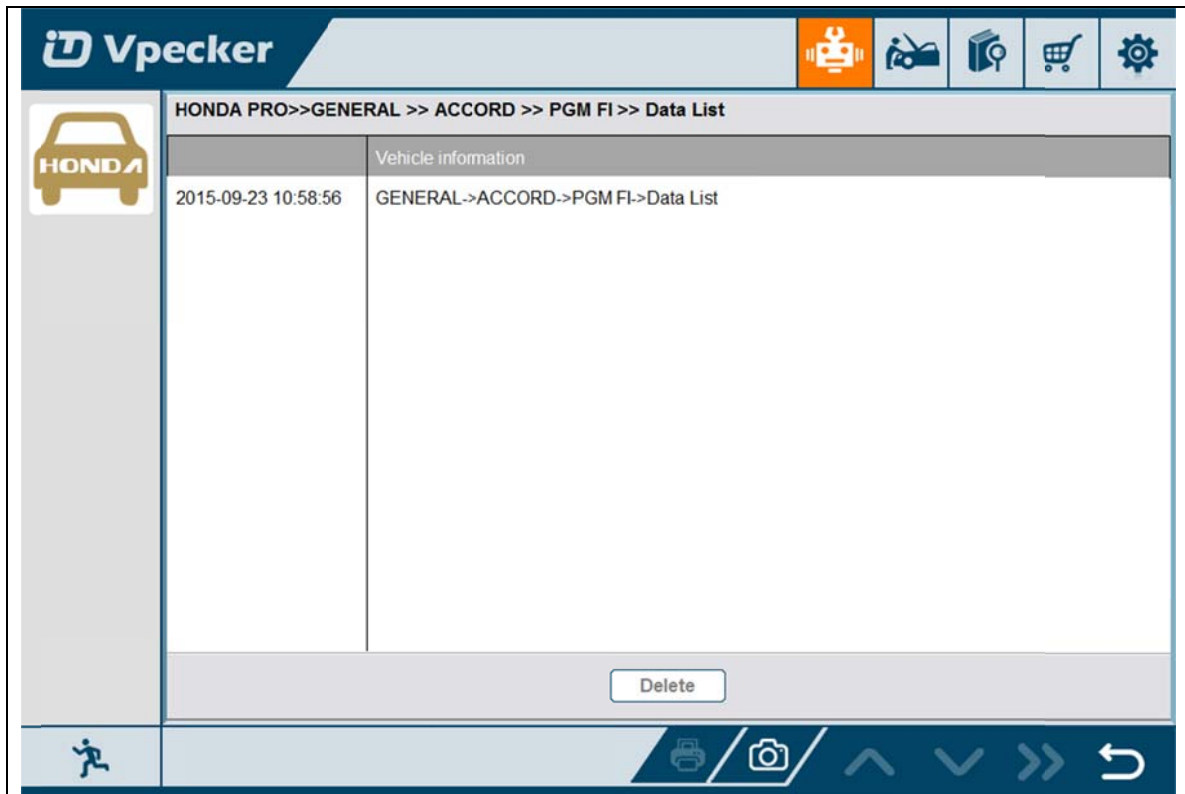


Click the Record button to start data recording, until to click Stop button to stop

recording:



Click the Play button, it will show the recording data list, select one of them and replay the recording data:





HONDA PRO>>GENERAL >> ACCORD >> PGM FI >> Data List

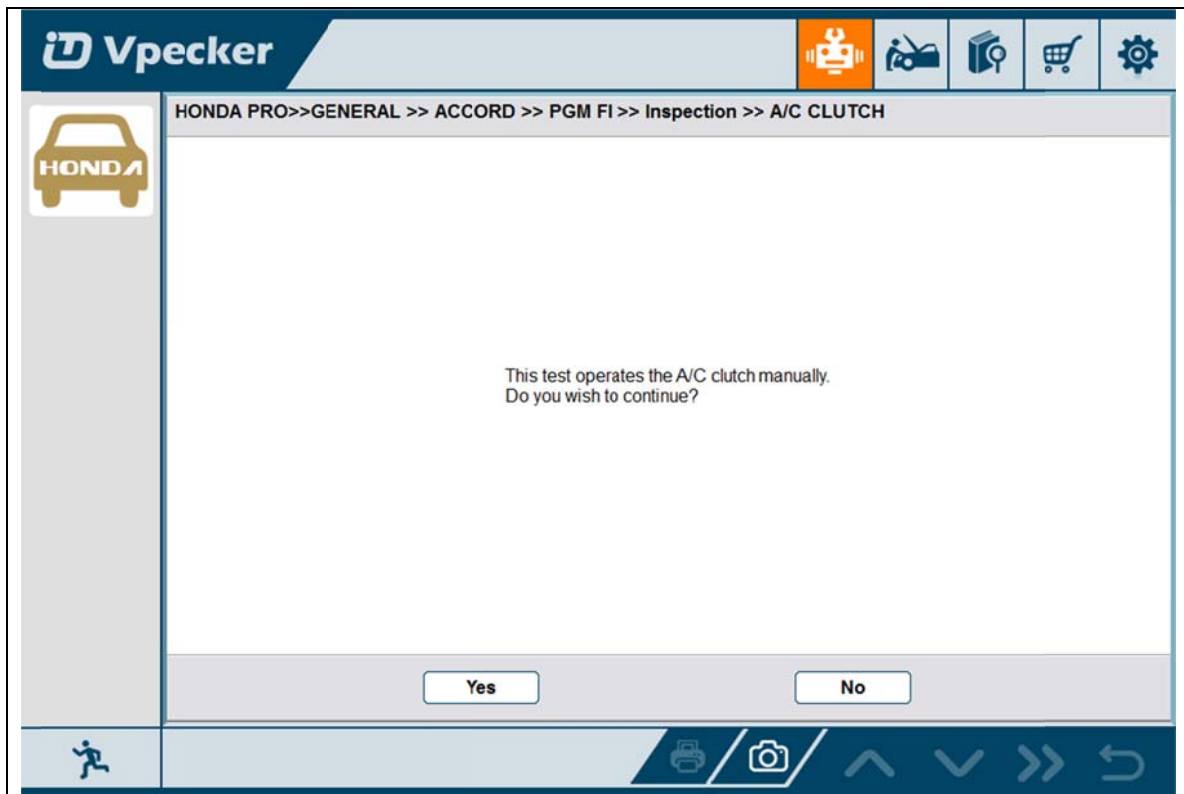
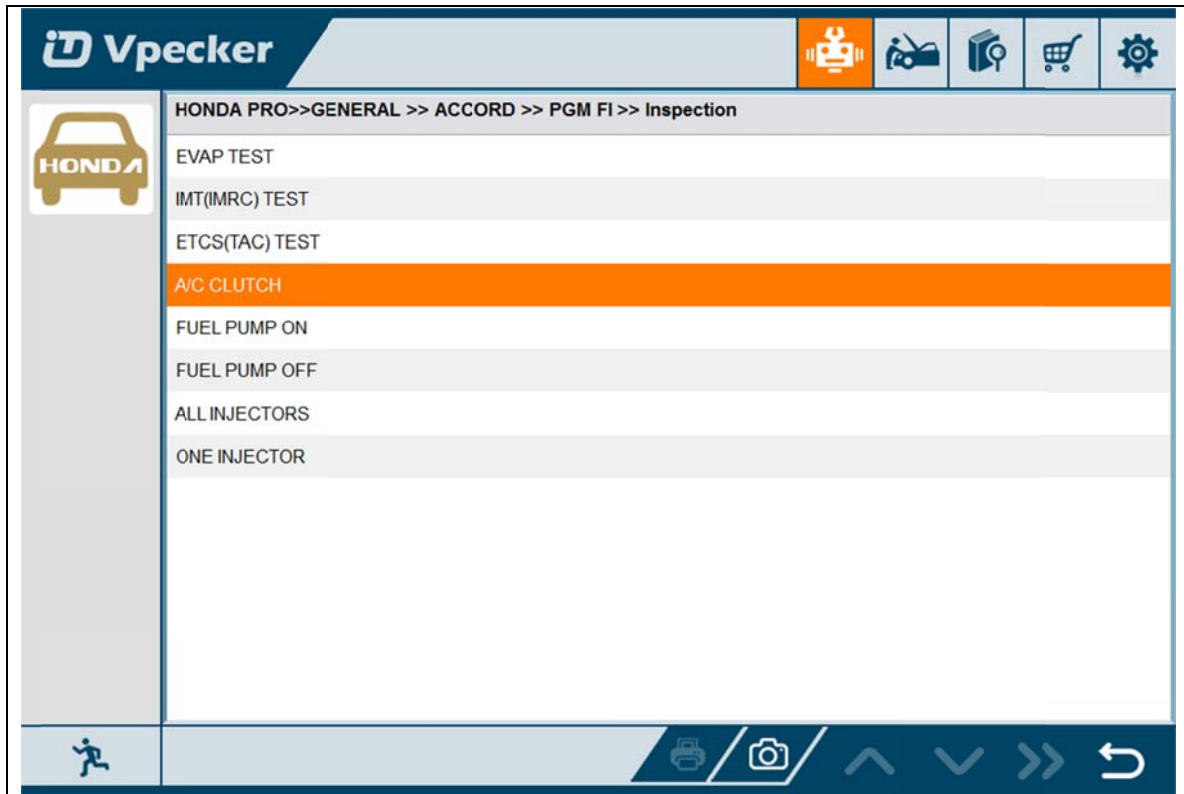
Name	Value	Unit
MAX:15682 MIN:775 ENGINE SPEED	4733	RPM
MAX:4.90 MIN:0.27 ECT SENSOR 1	0.74	V
MAX:4.82 MIN:0.61 ECT SENSOR 2	3.59	V
MAX:4.90 MIN:0.04 IAT SENSOR (2)	3.16	V

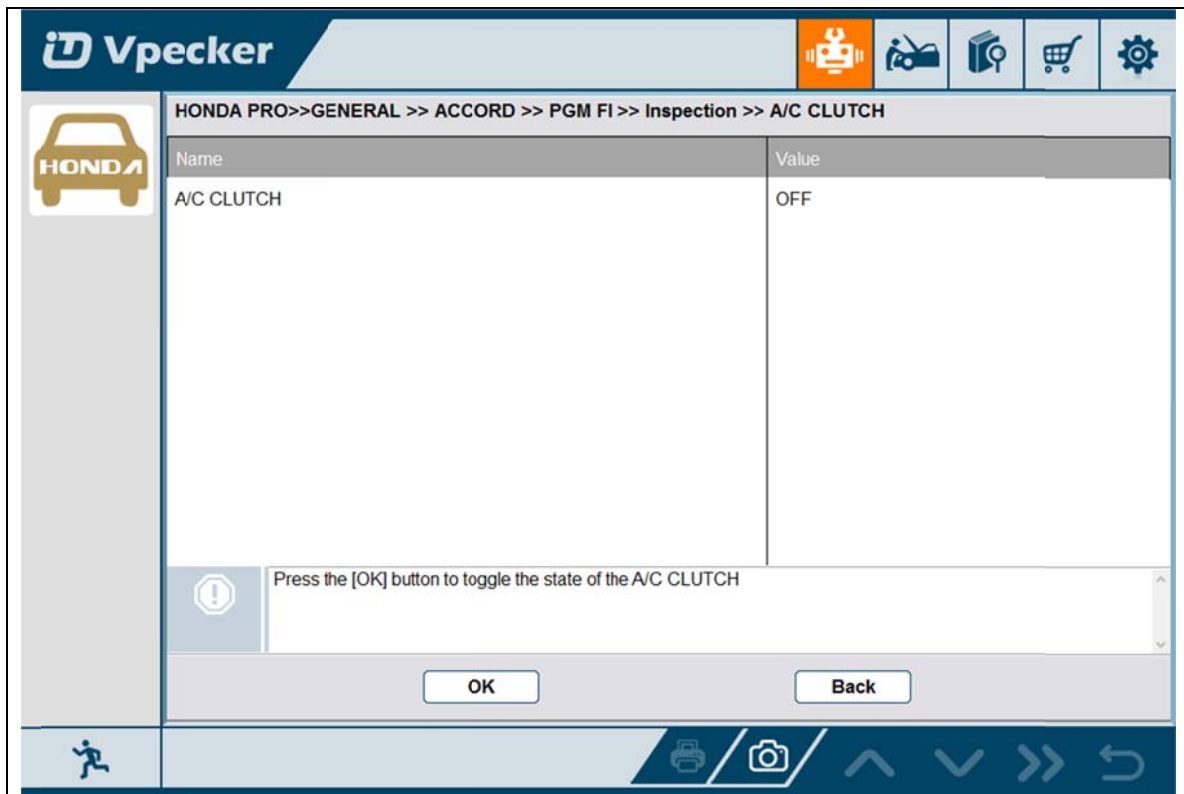
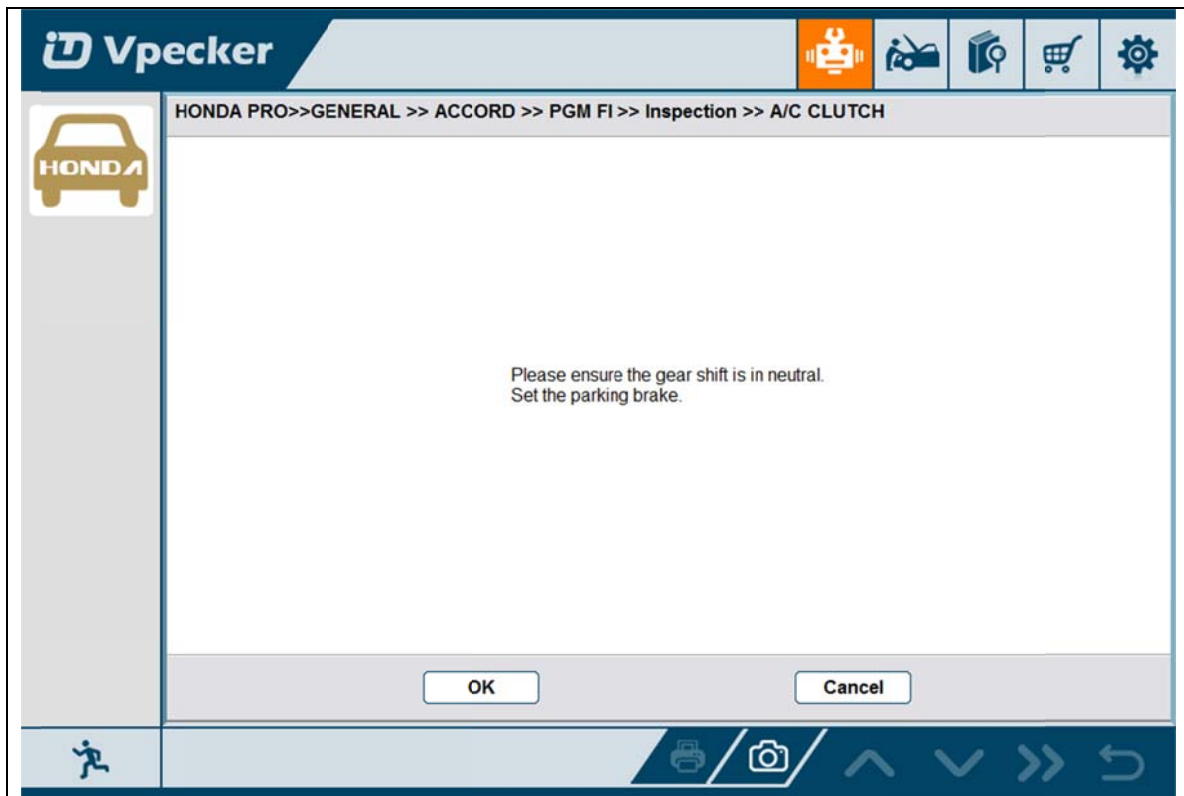
Pause

#### 4.7.6 Inspection

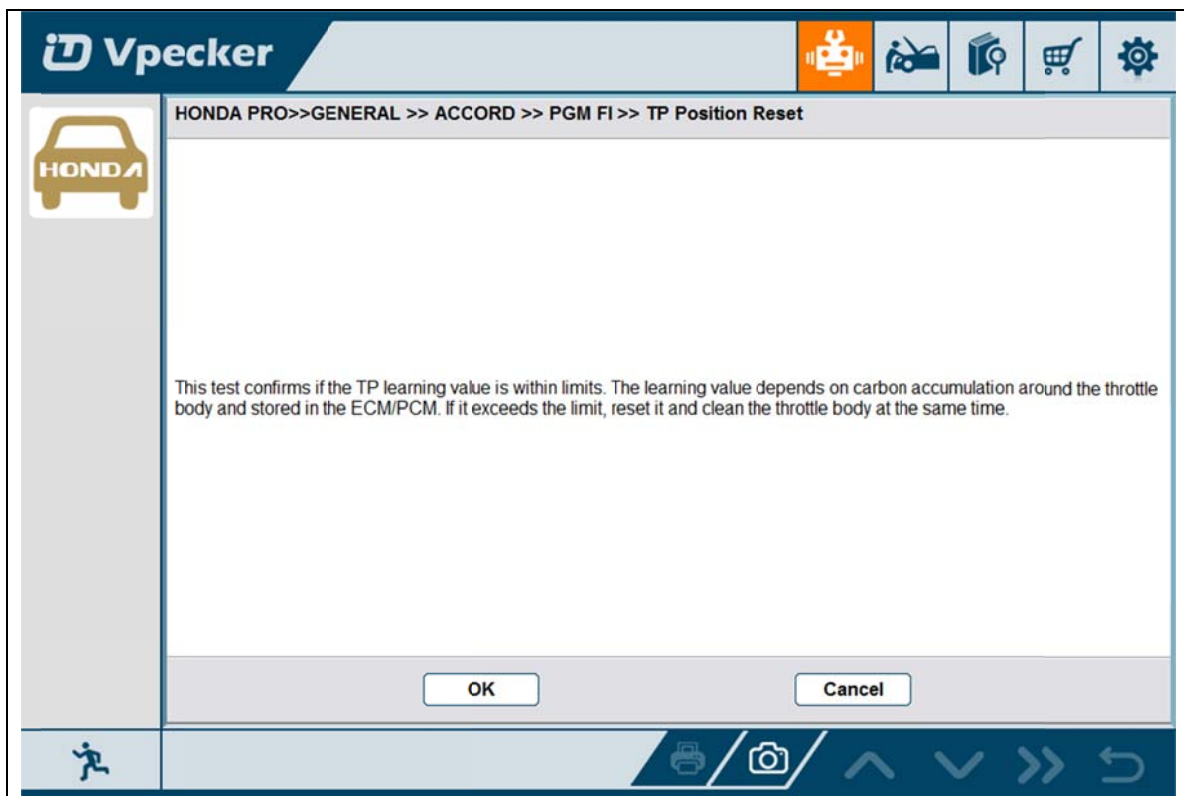
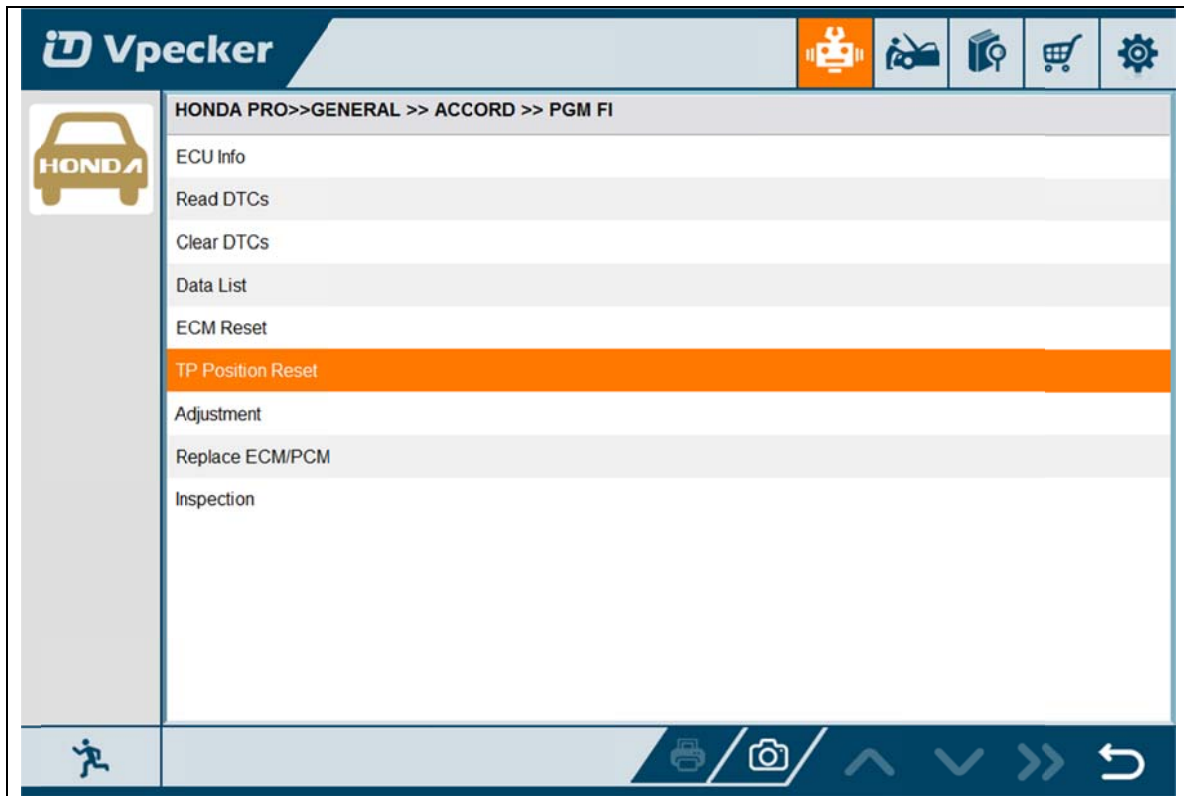
HONDA PRO>>GENERAL >> ACCORD >> PGM FI >> Inspection

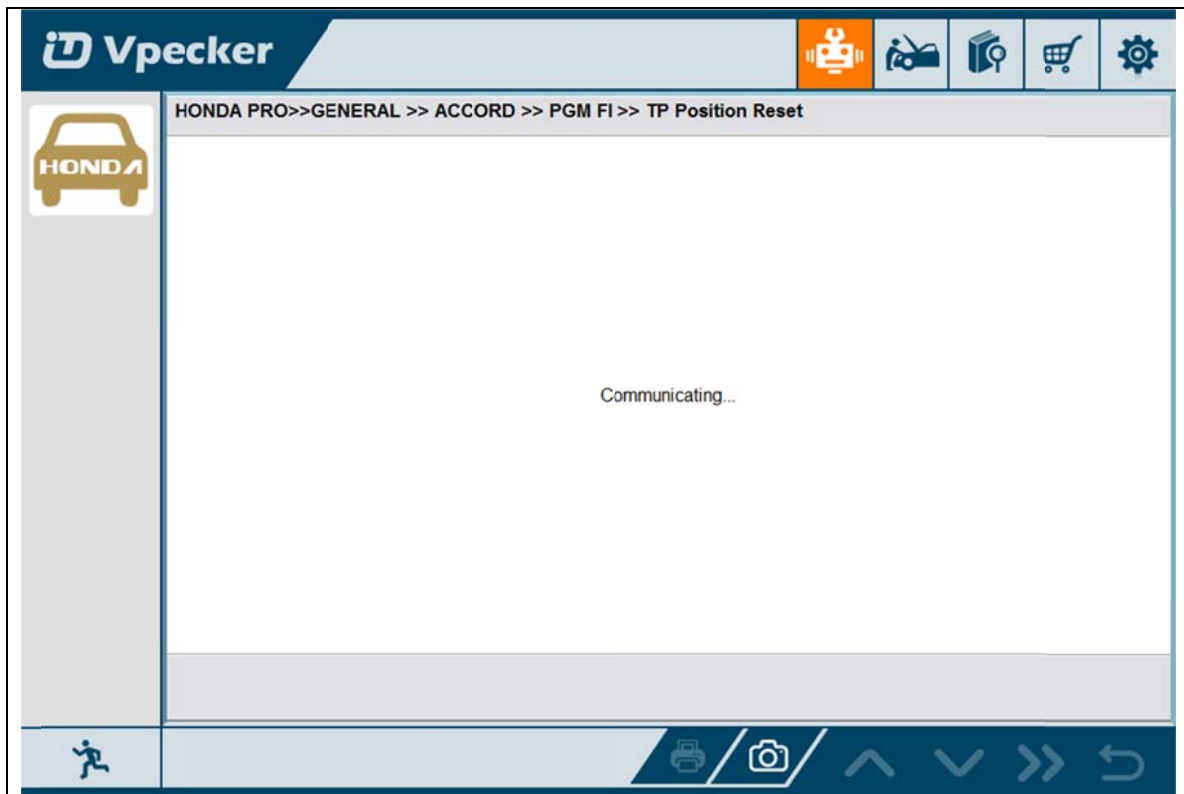
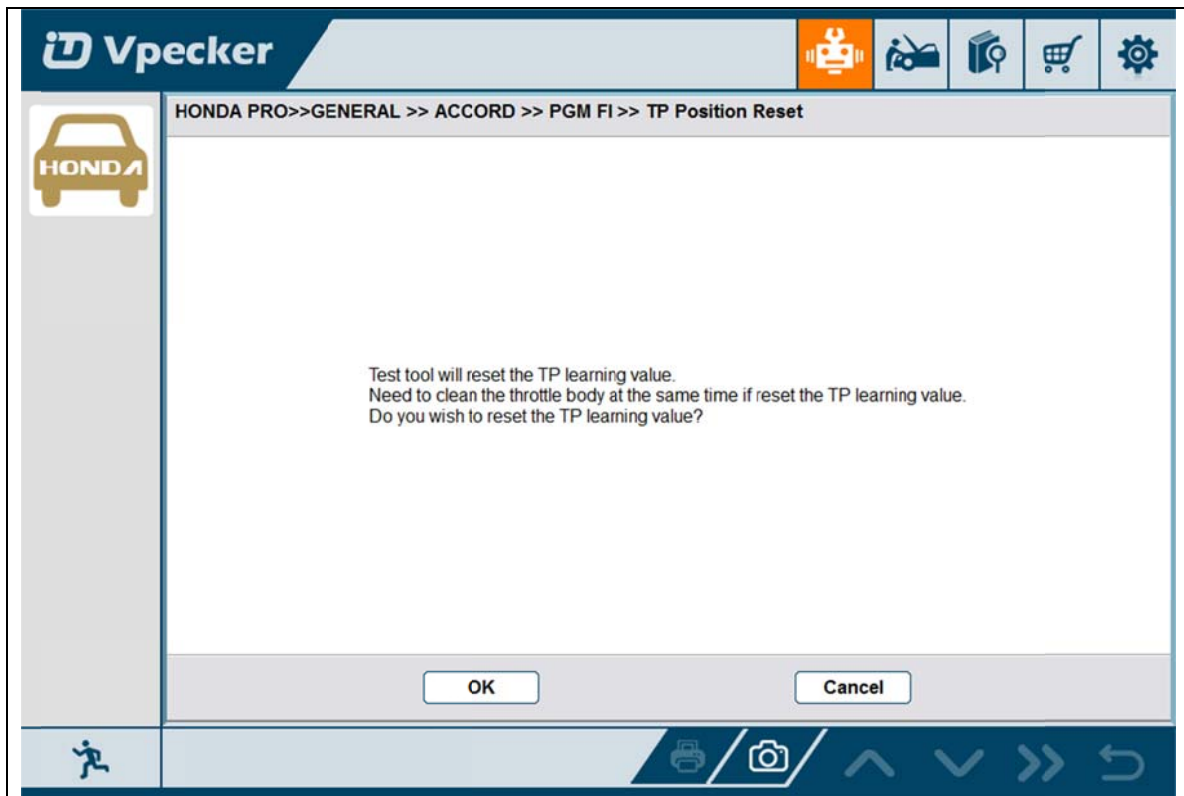
- EVAP TEST
- IMT(IMRC) TEST
- ETCS(TAC) TEST
- A/C CLUTCH
- FUEL PUMP ON
- FUEL PUMP OFF
- ALL INJECTORS
- ONE INJECTOR

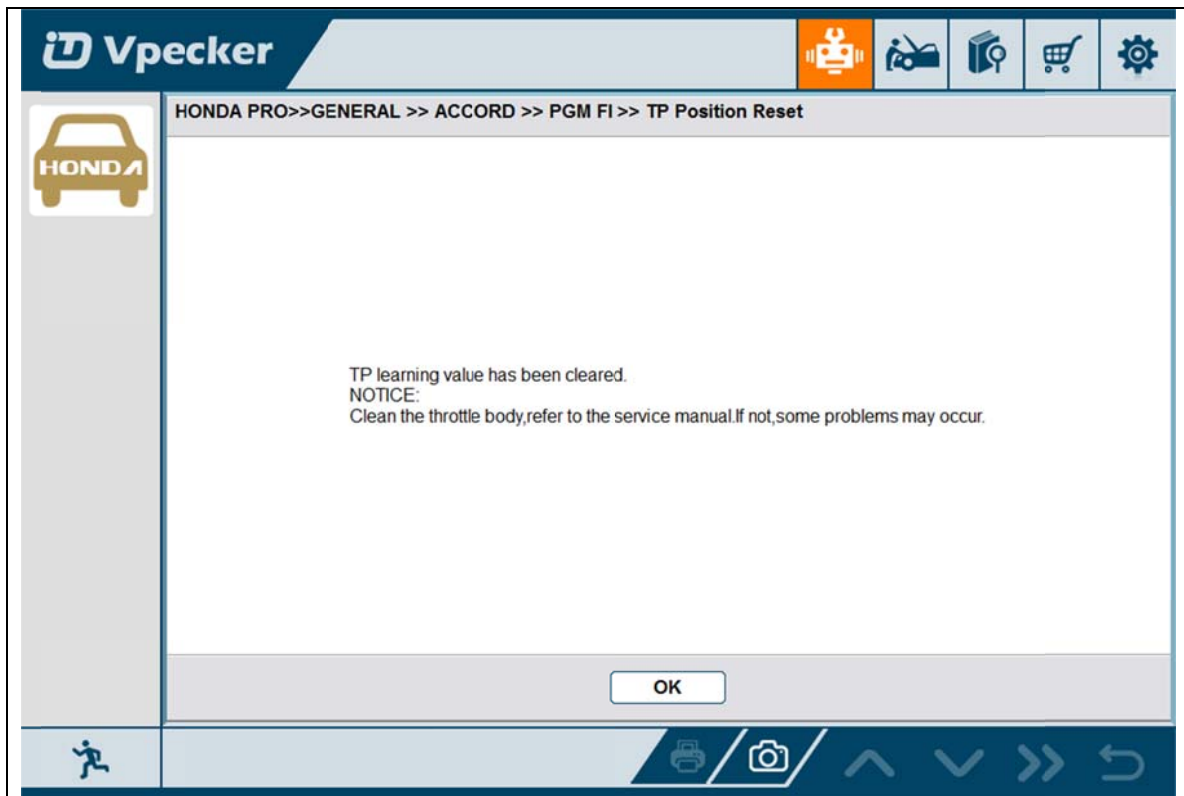




**4.7.7 TP Position Reset**

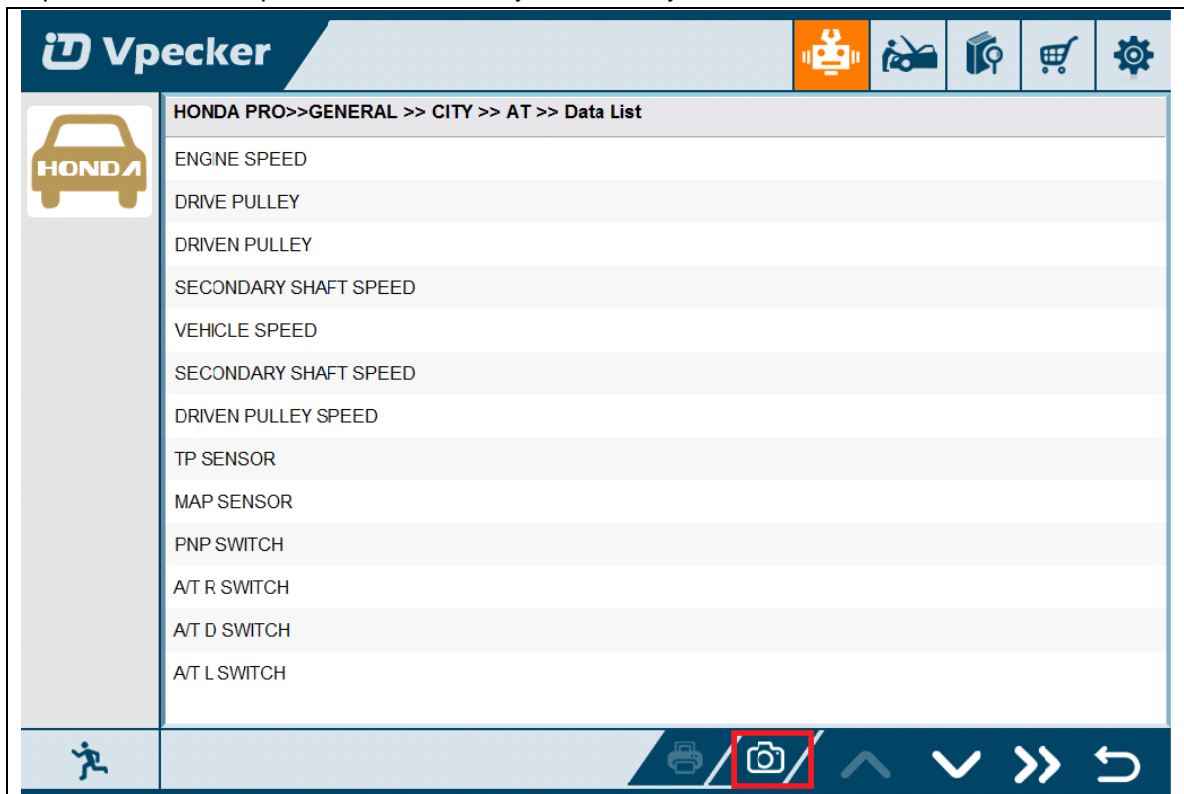




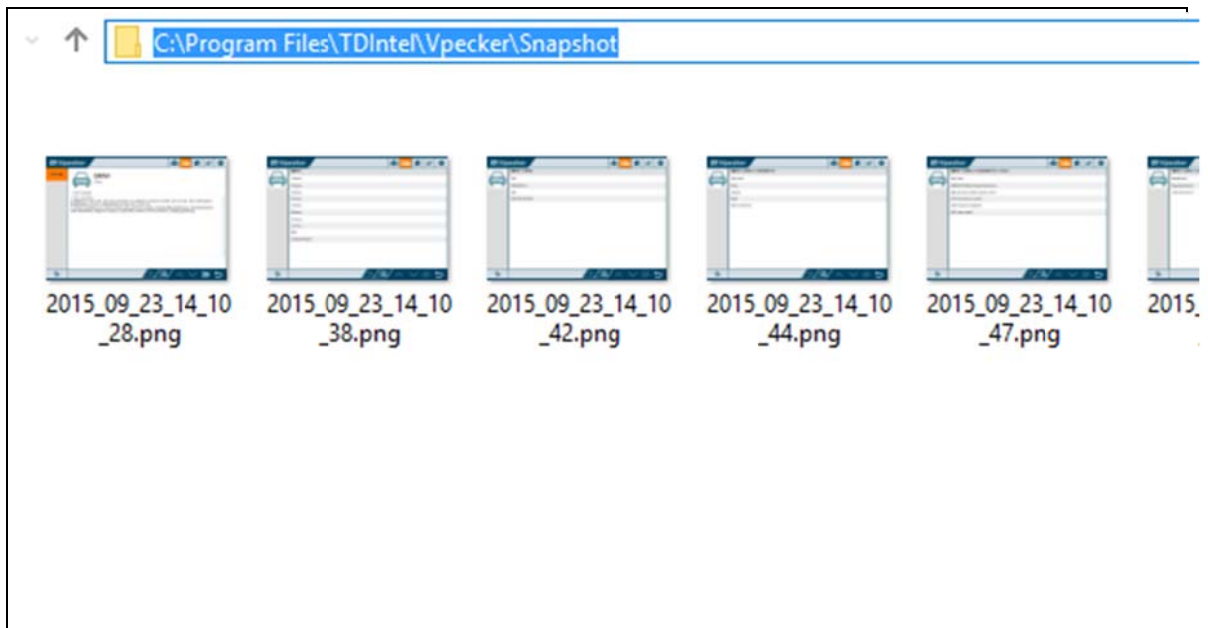


### 4.8 Screenshot

Captures, saves and prints screenshots anytime and anywhere.



The screenshot files save at the path:



## 4.9 Print

Prints out recorded data with Wi-Fi printing capability.

**HONDA PRO>>GENERAL >> CITY >> AT >> Data List**

Name	Value	Unit
ENGINE SPEED	13282	RPM
DRIVE PULLEY	932	RPM
DRIVEN PULLEY	15124	RPM
SECONDARY SHAFT SPEED	13096	RPM
VEHICLE SPEED	10	km/h
SECONDARY SHAFT SPEED	94	km/h
DRIVEN PULLEY SPEED	169	km/h
TP SENSOR	56.0	deg
MAP SENSOR	48	kPa
FNP SWITCH	ON	
A/T R SWITCH	OFF	
A/T D SWITCH	ON	
A/T L SWITCH	ON	
SCS	OPEN	
BRAKE SWITCH	ON	
MODE D SWITCH	ON	
MODE S1/S2 SWITCH	OFF	
S1 INDICATOR	OFF	

Channel Wave Play Record

Printer icon highlighted in red box.

**HONDA PRO>>GENERAL >> CITY >> AT >> Data List**

Name	Value	Unit
ENGINE SPEED	5875	RPM
DRIVE PULLEY	6867	RPM
DRIVEN PULLEY		RPM
SECONDARY SHAFT		RPM
VEHICLE SPEED		km/h
SECONDARY SHAFT		km/h
DRIVEN PULLEY SPE		km/h
TP SENSOR		deg
MAP SENSOR		kPa
PNP SWITCH		
A/T R SWITCH		
A/T D SWITCH		
A/T L SWITCH		
SCS		
BRAKE SWITCH		
MODE D SWITCH		
MODE S1/S2 SWITCH	OFF	
S1 INDICATOR	ON	

**Print Dialog Box:**

Printer: Name: Microsoft Print to PDF (Properties...)

Status: Ready

Type: Microsoft Print To PDF

Where: PORTPROMPT:

Comment:

Print range:  All,  Pages from: [ ] to: [ ],  Selection

Copies: Number of copies: 1,  Collate

Buttons: OK, Cancel

Bottom Bar: Channel, Wave, Play, Record

Navigation: Home, Back, Forward, Refresh

Press "OK" to print the test report, as below:





★ Company name:  
 📍 Address:  
 ☎ Tel:  
 📠 Fac:  
 ✉ Email:

Date: 2015-09-23 11:44:19  
 Vehicle: HONDA PRO

Path: HONDA PRO / GENERAL / CITY / AT / Data List

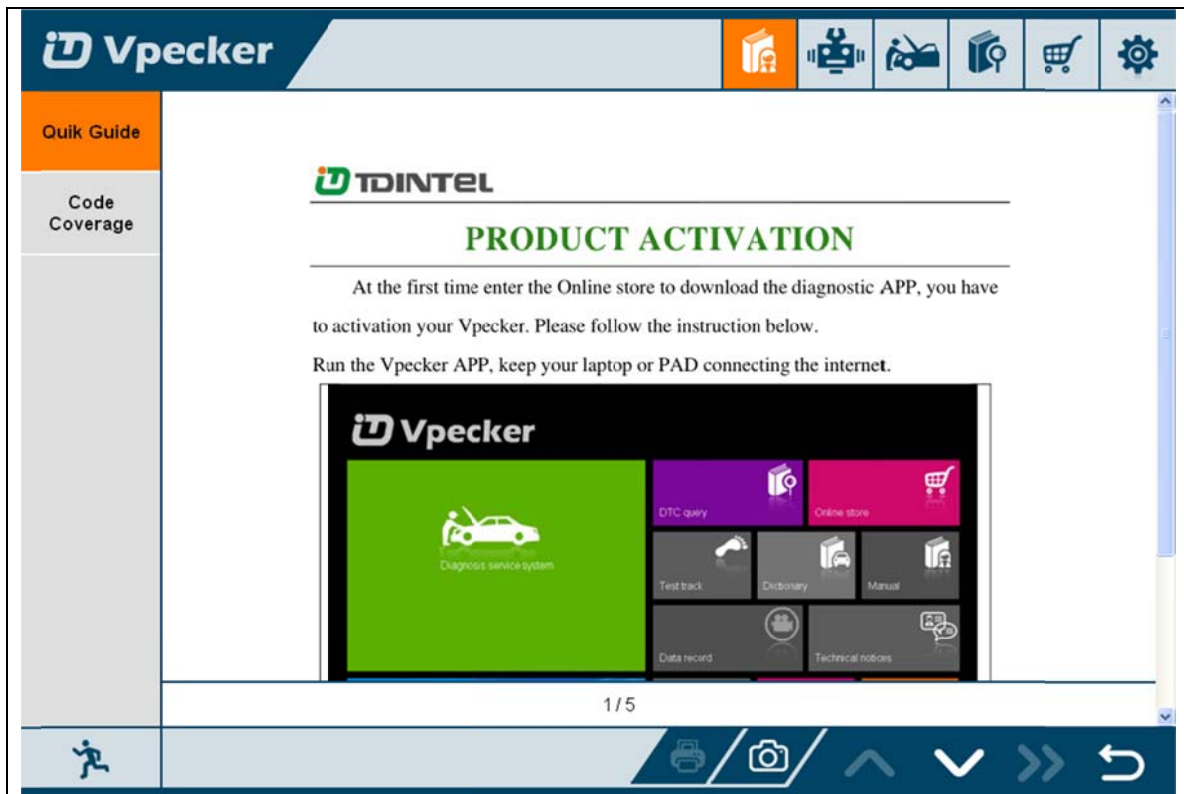
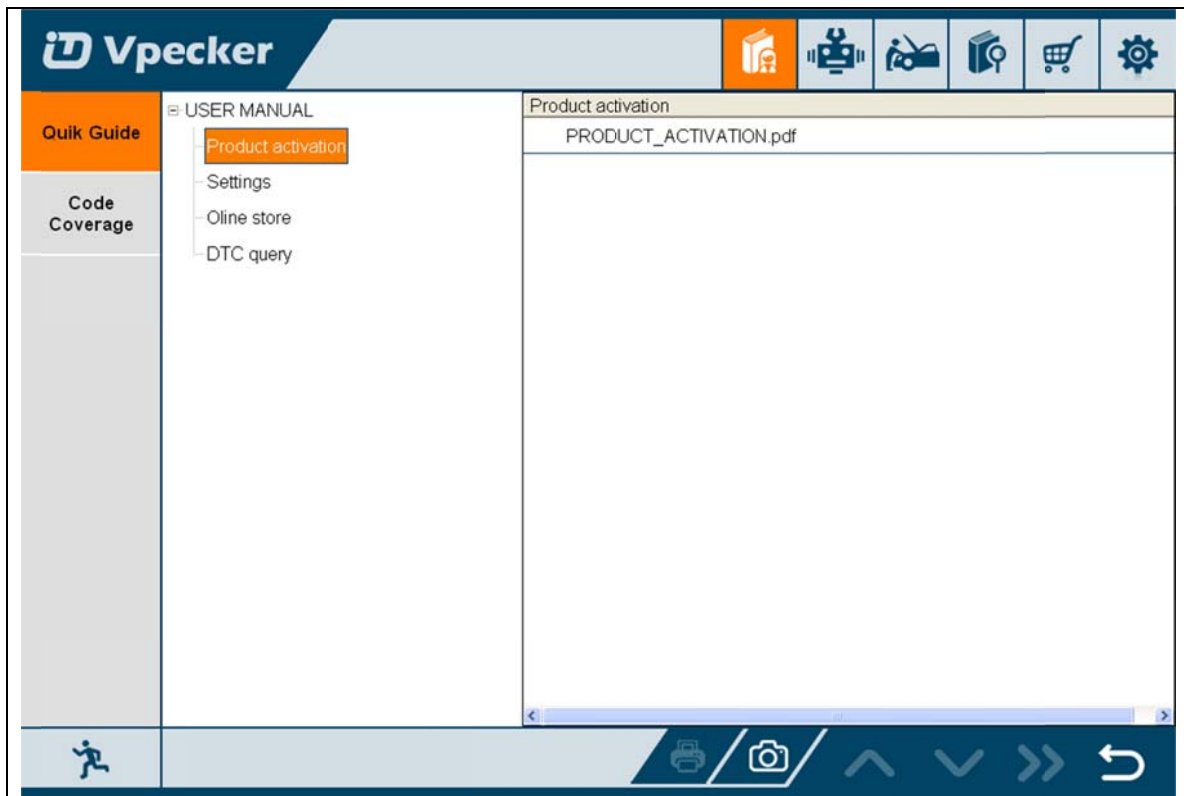
### Live Data

Name	Value	Unit
ENGINE SPEED	10628	RPM
DRIVE PULLEY	8456	RPM
DRIVEN PULLEY	11111	RPM
SECONDARY SHAFT SPEED	7639	RPM
VEHICLE SPEED	125	km/h
SECONDARY SHAFT SPEED	172	km/h
DRIVEN PULLEY SPEED	207	km/h
TP SENSOR	44.3	deg
MAP SENSOR	157	kPa
PNP SWITCH	ON	
A/T R SWITCH	OFF	
A/T D SWITCH	OFF	
A/T L SWITCH	ON	
SCS	SHORT	
BRAKE SWITCH	ON	
MODE D SWITCH	ON	
MODE S1/S2 SWITCH	ON	
S1 INDICATOR	ON	
S2 INDICATOR	OFF	
D INDICATOR	OFF	
INHIBITOR SOL	ON	
COOLING CONTROL	OFF	
FEEDBACK LEARN	Completed	
SHIFT CONTROL SOL	99.24	A
PULLEY CONTROL SOL	81.61	A
START CLUTCH CONTROL SOL	8.49	A

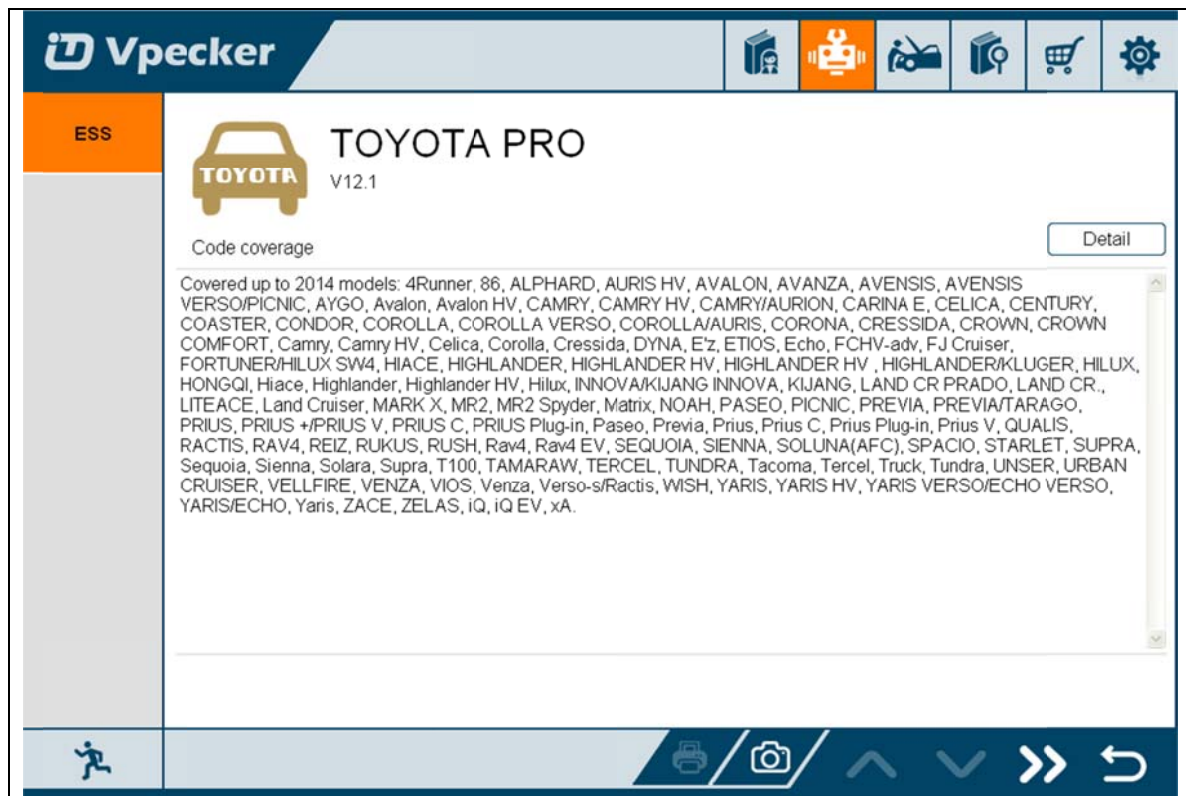
- 1 -

## 4.10 Manual

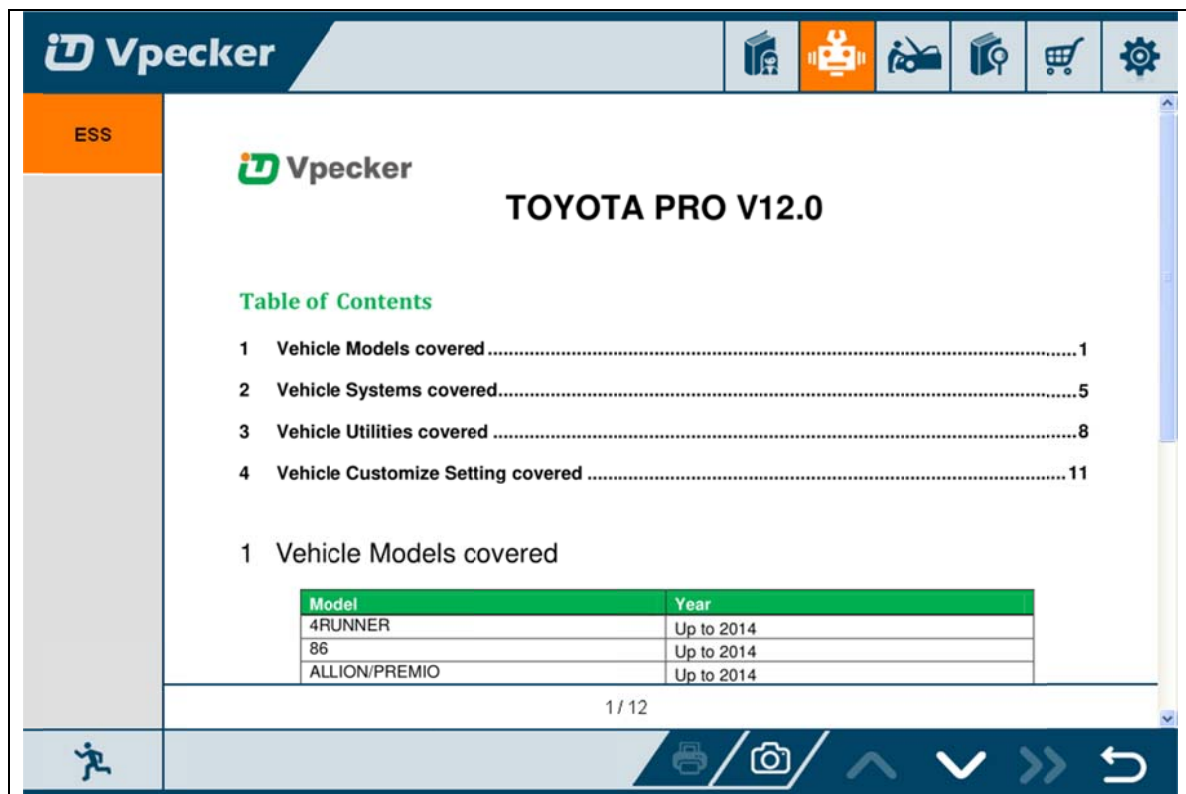
In manual function, you can read the Vpecker quick guide and the vehicle code coverage.



## 4.11 Diagnose function list



Press "Detail" button



## 5. Products website

Please focus on our website [www.tdintel.com](http://www.tdintel.com) for the updating information and other news.

## 6. Warranty

VPECKER software is free updating within 1 year, from the date of online automatically updating.