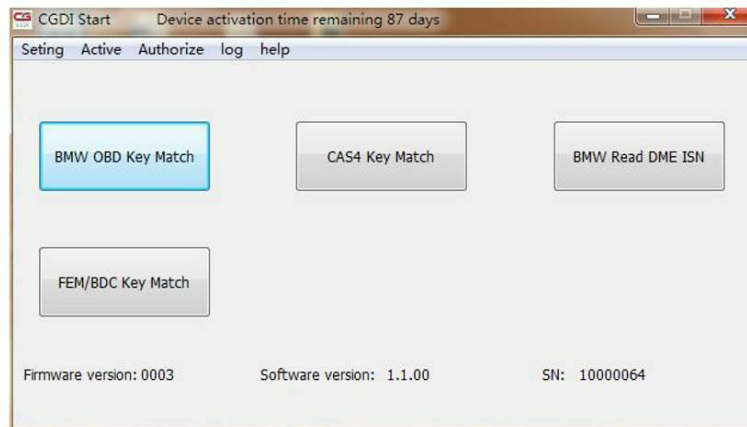


## CGDI Prog Firmware & Software Update Guide

### CGDI Prog Firmware Update

Step 1. Connect CGDI Pro device to the computer, open CGDI software.

#### Firmware



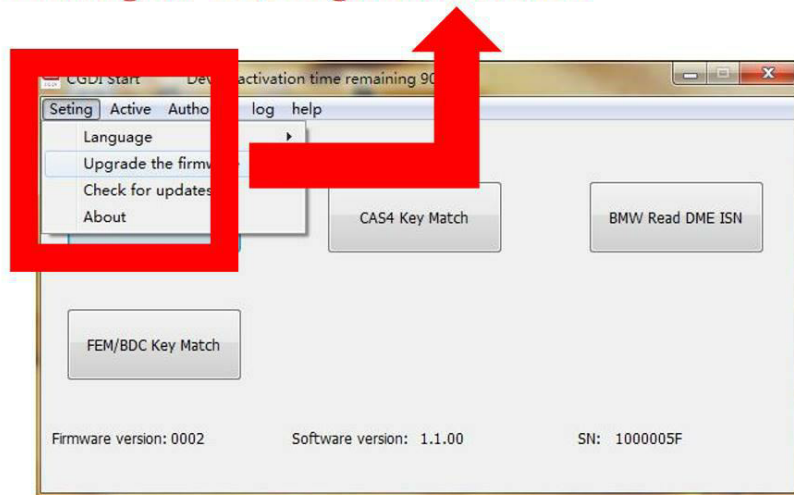
**connect devices, open CGDI software**

Step 2. Click on "Setting" and then "Upgrade the firmware", waiting.

#### Firmware

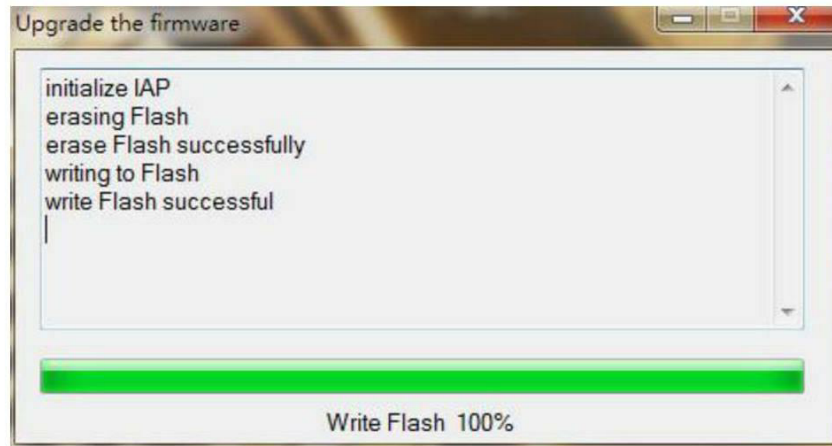
**select "Seting", click "Upgrade the firmware"**

**waitting for entering next interface**



Step 3. Updating...

Firmware

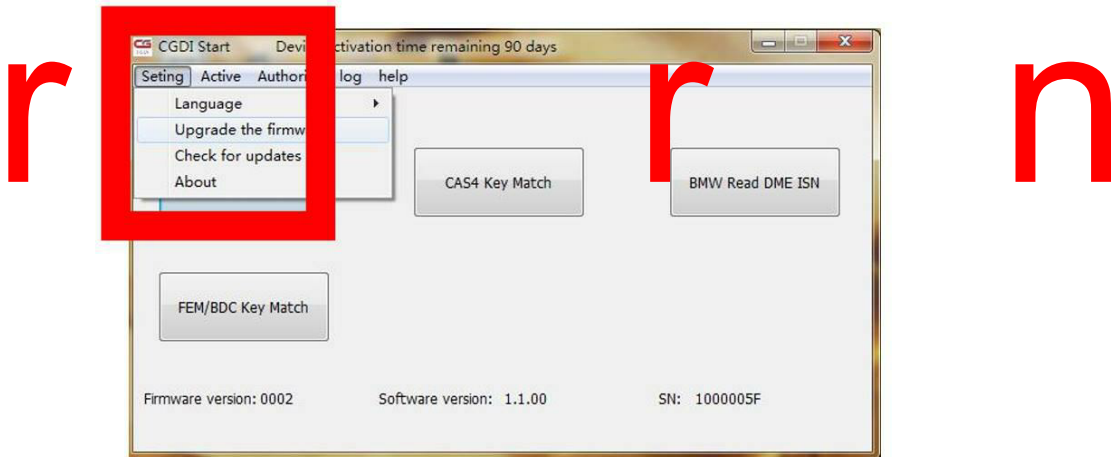


**Firmware is upgrading, please do not optional operation ! ! !**

Step 4. CGDI programmer firmware update successfully, again click on "Upgrade the firmware".

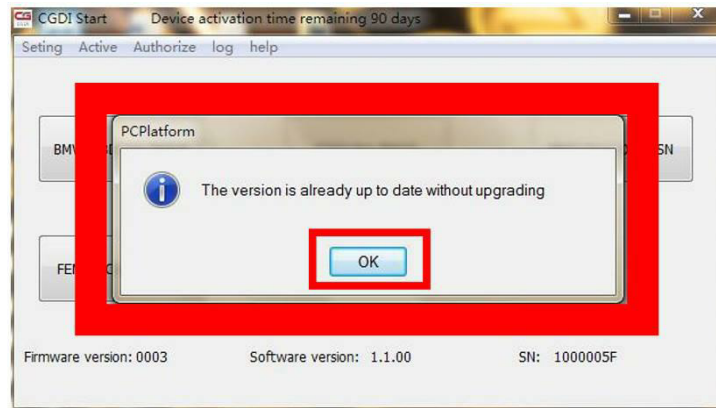
Firmware

**After Firmware updated successfully  
click again "Upgrade the firmware"**



Step 5. Get message reading "The version is already up to date without upgrading". Click on "OK".

## Firmware



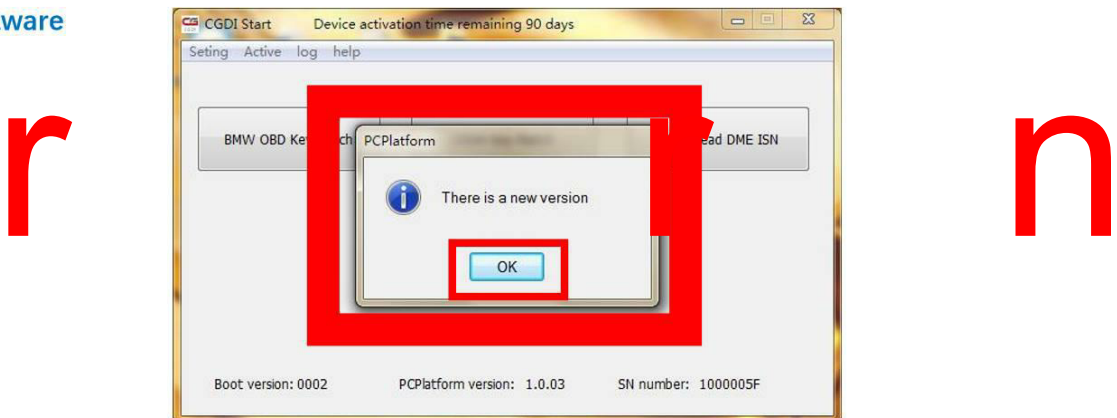
show "The version is already up to date without upgrading"  
show: firmware updated successfully, can be working normally

Done

## CGDI Prog software update

Step 1. Receive message "There is a new version", click on "OK"

## Software

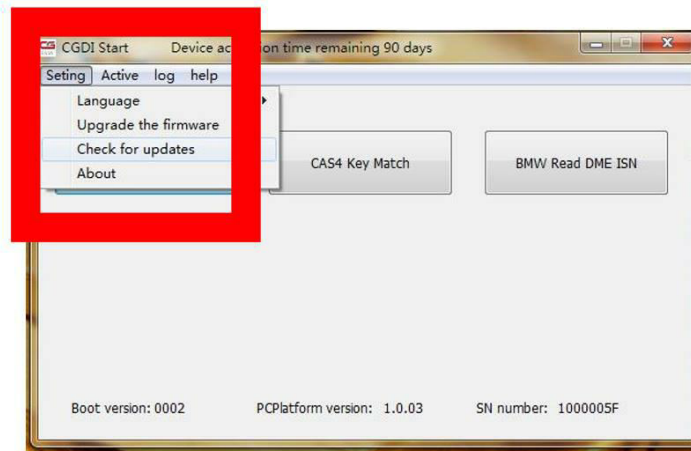


show "There is a new version" click OK

Step 2. Click on "Setting", then "Check for updates", waiting until the next dialog box appears.

Software

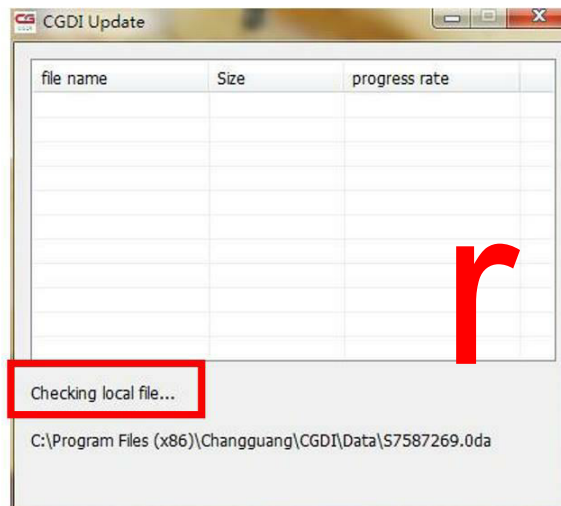
**select“Seting”, click“Check for updates”  
waitting for entering next interface**



Step 3. Checking local file.

Software

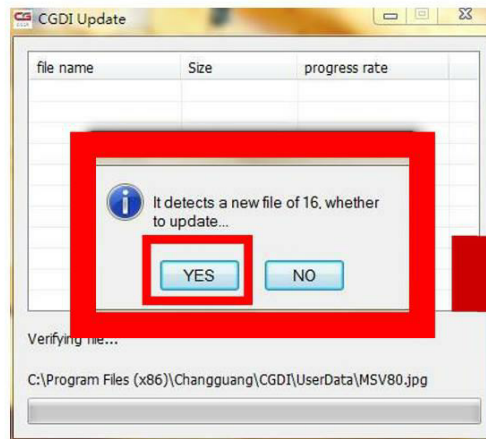
**r r n**



**checking software, pls dont operate ! ! !**

Step 4. Detects a new file, click "Yes" to update.

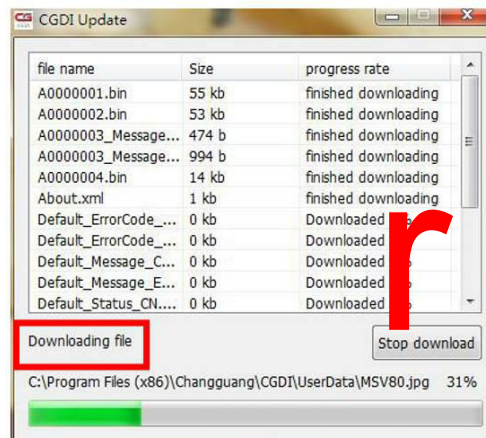
## Software



**finished checking, detects new file, click OK**

Step 5. Downloading file.

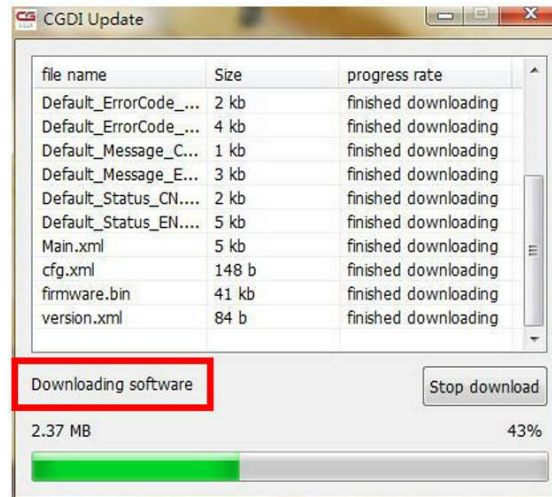
## Software



**downloading file, pls dont operate ! ! !**

Step 6. Finish loading software.

Software

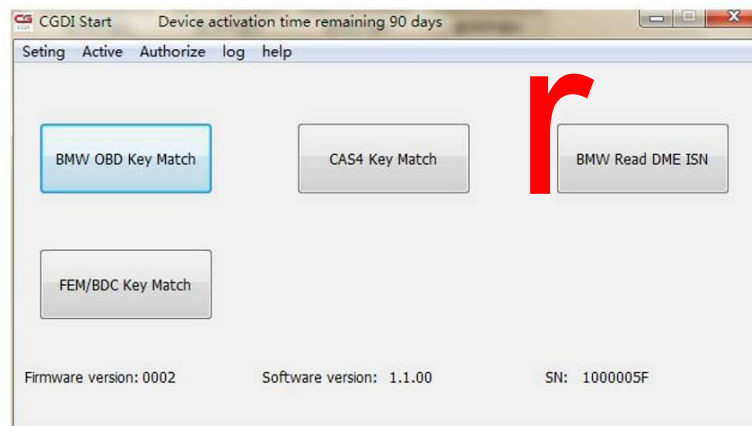


**finished loading software, loading software, pls wait!**

Step 7. CGDI programmer software update successfully. Ready to use the newest software.

Software

**software updated successfully, can working normally**



r

r

n