

锂电池UN38.3测试报告

Lithium Battery UN38.3 Test Report

样品名称 Lithium-ion Polymer(LIP) Rechargeable Battery Pack
(Samples) 4058110

委托单位 SHENZHEN REXPOWER ELECTRONICS CO., LTD
(Client)

生产单位 SHENZHEN REXPOWER ELECTRONICS CO., LTD
(Manufacturer)



Pony Testing International Group

I、SAMPLE DESCRIPTION

Sample Name	Lithium-ion Polymer (LIP) Rechargeable Battery Pack		Battery Type	4058110	
Client	SHENZHEN REXPOWER ELECTRONICS CO., LTD				
Manufacturer	SHENZHEN REXPOWER ELECTRONICS CO., LTD				
Nominal Voltage	7.4V	Rated Capacity	3000mAh	Limited Charge Voltage	8.4V
Charge Current	600mA	Maximum Continuous Charge Current	1500mA	End Charge Current	60mA
Cut-off Voltage	6.0V	Maximum Discharge Current	1500mA	Use	---
Cells Number	2PCS	Cell Model	4058110P	Rated Capacity	3000mAh
Manufacturer of cell	SHENZHEN REXPOWER ELECTRONICS CO., LTD				
Chemical component	LiCoO ₂				
Client date	2013-02-08		Finished date	2013-02-28	

II、REFERENCE METHOD

《United Nations Recommendations On The Transport Of Dangerous Goods, Manual Of Tests And Criteria》(ST/SG/AC.10/11/Rev.5/Amend.1).

III、TEST ITEM

- | | |
|------------------------|---------------------------|
| 1. Altitude simulation | 5. External short circuit |
| 2. Thermal test | 6. Crush |
| 3. Vibration | 7. Overcharge |
| 4. Shock | 8. Forced discharge |

IV、CONCLUSION

ITEM	SAMPLE NUMBER	STANDARD	CONCLUSION
Altitude simulation	N1~N4 C1~C4	UN38.3	PASS
Thermal test			PASS
Vibration			PASS
Shock			PASS
External short circuit			PASS
Crush	N9~N13		PASS
Overcharge	N5~N8 C5~C8		PASS
Forced discharge	N14~N23 C9~C18		PASS

The submitted battery and component cell were complied with the UN Manual of Tests and Criteria, Part III, sub-section 38.3.

Prepared by: *Lirhairi*Checked by: *chengpeng*Approved by: *Liyu*

Approval Date: February 28, 2013

本测试单位保证测试的客观公正性，并对委托单位的商业秘密履行保密义务；委托单位对样品的代表性和资料的真实性负责，本测试单位仅对样品负责，委托单位对于测试结果的使用，使用所产生的直接或间接损失及一切法律后果，本测试单位不承担任何经济和法律后果；本《测试报告》如无专用章和批准人签字或被复制，则无效；任何对本《测试报告》未经授权的部分或全部转载、篡改、伪造或复制行为都是违法的，将被追究民事、行政甚至刑事责任。

- 防伪说明：(1)《测试报告》的报告编号是唯一的，即每一个报告编号只对应唯一的《测试报告》；
 (2)《测试报告》采用特制防伪纸张印制，纸张表面带有“PONY”防伪纹络，该防伪纹络不支持复印，即复制件不会带有“PONY”防伪纹络；
 (3)《测试报告》采用的防伪纸张内部亦加带有高科技“PONY”防伪水印，只有在验钞机等紫外光照射下方可见出无色荧光防伪字样；
 (4)《测试报告》所盖防伪骑缝章中的一部分加盖于本测试单位的留底报告上，《测试报告》与本测试单位留底报告的骑缝章应拼合完整无缺。

PONY 谱尼测试
Pony Testing International Group

www.ponytest.com ☎ Hotline 400-819-5688

Add: 北京市海淀区苏州街49-3号智博大厦10层	Add: 上海市徐汇区桂平路680号35号楼4层	Add: 深圳市南山区创业路中兴工业城B栋1层	Add: 青岛市市南区株洲路190号6层
Tel: (010) 82618116	Tel: (021) 64851999	Tel: (0755) 26050909	Tel: (0532) 88706866
Add: 天津市南开区红枫路福安大厦10层	Add: 宁波市高新区新明路150号二期4号楼4层	Add: 广州市海珠区敦和路189号海珠科技园3号楼7层	
Tel: (022) 27360730	Tel: (0574) 87736499	Tel: (020) 89224310	



Pony Testing International Group

Notes:

N1~N8: Batteries at first cycle, in fully charged states;

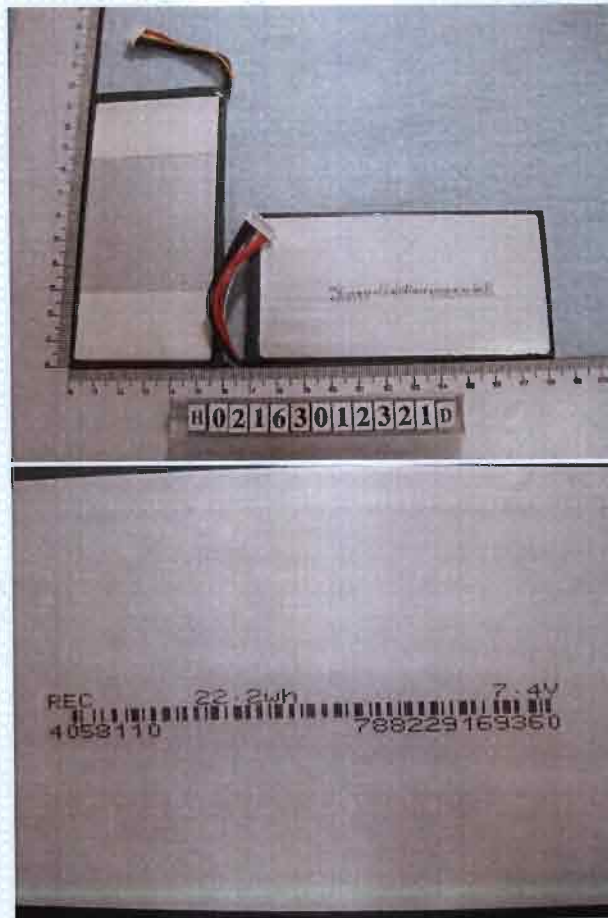
N9~N13: Rechargeable component cells, at first cycle at 50% of the design rated capacity;

N14~N23: Rechargeable component cells, at first cycle in fully discharged states;

C1~C8: Batteries, after 50 cycles ending in fully charged states;

C9~C18: Rechargeable component cells after 50 cycles ending in fully discharged states.

V、PHOTO OF THE SAMPLE



Authenticate the photo on original report only

本测试单位保证测试的客观公正性，并对委托单位的商业秘密履行保密义务；委托单位对样品的代表性和资料的真实性负责，本测试单位仅对样品负责，委托单位对于测试结果的使用，使用所产生的直接或间接损失及一切法律后果，本测试单位不承担任何经济和法律后果；本《测试报告》如无专用章和批准人签字或被复制，则无效；任何对本《测试报告》未经授权的部分或全部转载、篡改、伪造或复制行为都是违法的，将被追究民事、行政甚至刑事责任。

防伪说明：(1)《测试报告》的报告编号是唯一的，即每一个报告编号仅对应唯一的《测试报告》；
 (2)《测试报告》采用特制防伪纸张印制，纸张表面带有“PONY”防伪纹路，该防伪纹路不支持复印，即复制件不会带有“PONY”防伪纹路；
 (3)《测试报告》采用的防伪纸张内部亦加带有高科技“PONY”防伪水印，只有在验钞机等紫外线照射下方可显出无色荧光防伪字样；
 (4)《测试报告》所盖防伪骑缝章中的一部分加盖于本测试单位的留底报告上，《测试报告》与本测试单位留底报告的骑缝章应拼合完整无缺。

PONY 谱尼测试
Pony Testing International Group

www.ponytest.com

Hotline 400-819-5688

Add: 北京市海淀区苏州街19-3

上海市徐汇区桂平路680号

深圳市南山区创业路中兴

青岛市崂山区林湖路190

号智盟大厦

35号楼4层

工业城6栋1层

号6层

Tel: (010) 82618118

(021) 64851999

(0755) 26050909

(0532) 88706866

Add: 天津市南开区红康路嘉里

宁波市高新区新明路150号

广州市海珠区敦和路189号

大厦10层

二期4号楼4层

海珠科技园3号楼7层

Tel: (022) 27360730

(0574) 87736499

(020) 89224310



Pony Testing International Group

VI、 TEST METHOD

Tests T.1 to T.5 shall be conducted in sequence on the same cell or battery. Tests T.6 and T.8 shall be conducted using not otherwise tested cells or batteries. Test T.7 may be conducted using undamaged batteries previously used in tests T.1 to T.5 for purposes of testing on cycled batteries.

In order to quantify the mass loss, the following procedure is provided:

$$\text{Mass loss(\%)} = (M_1 - M_2) / M_1 \times 100$$

Where M_1 is the mass before the test and M_2 is the mass after the test. When mass loss does not exceed the values in Table blow, it shall be considered as "no mass loss".

Mass M of cell or battery	Mass loss limit
$M < 1g$	0.5%
$1g \leq M \leq 75g$	0.2%
$M > 75g$	0.1%

T.1 Altitude simulation

Test cells and batteries shall be stored at a pressure of 11.6 kPa or less for at least six hours at ambient temperature ($20 \pm 5^\circ\text{C}$).

Cells and batteries meet this requirement if there is no leakage, no venting, no disassembly, no rupture and no fire and if the open circuit voltage of each test cell or battery after testing is not less than 90% of its voltage immediately prior to this procedure. The requirement relating to voltage is not applicable to test cells and batteries at fully discharged states.

T.2 Thermal test

Test cells and batteries are to be stored for at least six hours at a test temperature equal to $72 \pm 2^\circ\text{C}$, followed by storage for at least six hours at a test temperature equal to $-40 \pm 2^\circ\text{C}$. The maximum time interval between test temperature extremes is 30 minutes. This procedure is to be repeated until 10 total cycles are complete, after which all test cells and batteries are to be stored for 24 hours at ambient temperature ($20 \pm 5^\circ\text{C}$). For large cells and batteries the duration of exposure to the test temperature extremes should be at least 12 hours.

Cells and batteries meet this requirement if there is no leakage, no venting, no disassembly, no rupture and no fire and if the open circuit voltage of each test cell or battery after testing is not less than 90% of its voltage immediately prior to this procedure. The requirement relating to voltage is not applicable to test cells and batteries at fully discharged states.

本测试单位保证测试的客观公正性，并对委托单位的商业秘密履行保密义务；委托单位对样品的代表性和资料的真实性负责，本测试单位仅对样品负责，委托单位对于测试结果的使用，使用所产生的直接或间接损失及一切法律后果，本测试单位不承担任何经济和法律后果；本《测试报告》如无专用章和批准人签字或被复制，则无效；任何对本《测试报告》未经授权的部分或全部转载、修改、伪造或复制行为都是违法的，将被追究民事、行政甚至刑事责任。

防伪说明：(1)《测试报告》的报告编号是唯一的，即每一个报告编号只对应唯一的《测试报告》；
 (2)《测试报告》采用特制防伪纸张印刷，纸张表面带有“PONY”防伪纹路，该防伪纹路不支持复印，即复制件不会带有“PONY”防伪纹路；
 (3)《测试报告》采用的防伪纸张内部亦加带有高科技“PONY”防伪水印，只有在验钞机等紫外线照射下方可显出无色荧光防伪字样；
 (4)《测试报告》所盖防伪骑缝章中的一部分加盖于本测试单位的留底报告上，《测试报告》与本测试单位留底报告的骑缝章应拼合完整无缺。

PONY 谱尼测试
Pony Testing International Group

www.ponytest.com

☎ Hotline 400-819-5688

Add: 北京市海淀区苏州街49-3

上海市徐汇区桂平路680号

深圳市南山区创业路中兴

青岛市崂山区株洲路190

号富智威

35号楼4层

工业城6栋1层

7号6层

Tel: (010) 82618116

(021) 64851999

(0755) 26050909

(0532) 88706866

Add: 天津市南开区红旗路福宜

宁波市高新区新晖路150号

广州市海珠区敦和路189号

大厦10层

二期4号楼4层

海珠科技园3号楼2层

Tel: (022) 27360730

(0574) 87736499

(020) 89224310



Pony Testing International Group

T.3 Vibration

Cells and batteries are firmly secured to the platform of the vibration machine without distorting the cells in such a manner as to faithfully transmit the vibration. The vibration shall be a sinusoidal waveform with a logarithmic sweep between 7 Hz and 200 Hz and back to 7 Hz traversed in 15 minutes. This cycle shall be repeated 12 times for a total of 3 hours for each of three mutually perpendicular mounting positions of the cell. One of the directions of vibration must be perpendicular to the terminal face.

The logarithmic frequency sweep shall differ for cells and batteries with a gross mass of not more than 12 kg (cells and small batteries), and for batteries with a gross mass of more than 12 kg (large batteries).

For cells and small batteries: from 7 Hz a peak acceleration of 1 g_n is maintained until 18 Hz is reached. The amplitude is then maintained at 0.8 mm (1.6 mm total excursion) and the frequency increased until a peak acceleration of 8 g_n occurs (approximately 50 Hz).

A peak acceleration of 8 g_n is then maintained until the frequency is increased to 200 Hz.

For large batteries: from 7 Hz to a peak acceleration of 1 g_n is maintained until 18 Hz is reached. The amplitude is then maintained at 0.8 mm (1.6 mm total excursion) and the frequency increased until a peak acceleration of 2 g_n occurs (approximately 25 Hz). A peak acceleration of 2 g_n is then maintained until the frequency is increased to 200 Hz.

Cells and batteries meet this requirement if there is no leakage, no venting, no disassembly, no rupture and no fire during the test and after the test and if the open circuit voltage of each test cell or battery directly after testing in its third perpendicular mounting position is not less than 90% of its voltage immediately prior to this procedure. The requirement relating to voltage is not applicable to test cells and batteries at fully discharged states.

T.4 Shock

Test cells and batteries shall be secured to the testing machine by means of a rigid mount which will support all mounting surfaces of each test battery. Each cell or battery shall be subjected to a half-sine shock of peak acceleration of 150 g_n and pulse duration of 6 milliseconds. Each cell or battery shall be subjected to three shocks in the positive direction followed by three shocks in the negative direction of three mutually perpendicular mounting positions of the cell or battery for a total of 18 shocks.

However, large cells and large batteries shall be subjected to a half-sine shock of peak acceleration of 50 g_n and pulse duration of 11 milliseconds. Each cell or battery is subjected to three shocks in the positive direction followed by three shocks in the negative direction of each of three mutually perpendicular mounting positions of the cell for a total of 18 shocks.

本测试单位保证测试的客观公正性，并对委托单位的商业机密履行保密义务；委托单位对样品的代表性和资料的真实性负责；本测试单位仅对样品负责，委托单位对于测试结果的使用、使用所产生的直接或间接损失及一切法律后果，本测试单位不承担任何经济和法律責任；本《测试报告》如无专用章和批准人签字或被复制，则无效；任何对本《测试报告》未经授权的部分或全部转载、篡改、伪造或复制行为都是违法的，将被追究民事、行政甚至刑事责任。

防伪说明：(1)《测试报告》的报告编号是唯一的，即每一个报告编号仅对应唯一的《测试报告》；
(2)《测试报告》采用控制防伪纸张印制，纸张表面带有“PONY”防伪纹路，该防伪纹路不支持复印，即复制件不会带有“PONY”防伪纹路；
(3)《测试报告》采用的防伪纸张内部亦加带有高科技“PONY”防伪水印，只有在验钞机等紫外线照射下方可显出无色荧光防伪字样；
(4)《测试报告》所盖防伪骑缝章中的一部分加盖于本测试单位的置底报告上，《测试报告》与本测试单位置底报告的骑缝章应拼合完整无缝。

PONY 谱尼测试
Pony Testing International Group

www.ponytest.com ☎Hotline 400-819-5688

Add: 北京市海淀区苏州街49-3号蓝智星	Add: 上海市徐汇区桂平路680号35号楼4层	Add: 深圳市南山区创业路中兴工业城6栋1层	Add: 青岛市崂山区林洲路190号65层
Tel: (010) 82618116	Tel: (021) 64851999	Tel: (0755) 26050909	Tel: (0532) 88706880
Add: 天津市南开区红霞路鑫置大厦10层	Add: 宁波市高新区新晖路150号二期4号楼4层	Add: 广州市海珠区敦和路189号海珠科技园3号楼7层	
Tel: (022) 27360730	Tel: (0574) 87736499	Tel: (020) 89224310	



Pony Testing International Group

Cells and batteries meet this requirement if there is no leakage, no venting, no disassembly, no rupture and no fire and if the open circuit voltage of each test cell or battery after testing is not less than 90% of its voltage immediately prior to this procedure. The requirement relating to voltage is not applicable to test cells and batteries at fully discharged states.

T.5 External short circuit

The cell or battery to be tested shall be temperature stabilized so that its external case temperature reaches $55 \pm 2 \text{ }^\circ\text{C}$ and then the cell or battery shall be subjected to a short circuit condition with a total external resistance of less than 0.1 ohm at $55 \pm 2 \text{ }^\circ\text{C}$. This short circuit condition is continued for at least one hour after the cell or battery external case temperature has returned to $55 \pm 2 \text{ }^\circ\text{C}$.

Cells and batteries meet this requirement if their external temperature does not exceed $170 \text{ }^\circ\text{C}$ and there is no disassembly, no rupture and no fire during the test and within six hours after the test.

T.6 Impact / Crush

Impact (applicable to cylindrical cells greater than 20 mm in diameter)

The sample cell or component cell is to be placed on a flat smooth surface. A $15.8 \text{ mm} \pm 0.1 \text{ mm}$ diameter, at least 6 cm long, or the longest dimension of the cell, whichever is greater, Type 316 stainless steel bar is to be placed across the centre of the sample. A $9.1 \text{ kg} \pm 0.1 \text{ kg}$ mass is to be dropped from a height of $61 \pm 2.5 \text{ cm}$ at the intersection of the bar and sample in a controlled manner using a near frictionless, vertical sliding track or channel with minimal drag on the falling mass. The vertical track or channel used to guide the falling mass shall be oriented 90 degrees from the horizontal supporting surface.

The test sample is to be impacted with its longitudinal axis parallel to the flat surface and perpendicular to the longitudinal axis of the $15.8 \text{ mm} \pm 0.1 \text{ mm}$ diameter curved surface lying across the centre of the test sample. Each sample is to be subjected to only a single impact.

Crush (applicable to prismatic, pouch, coin/button cells and cylindrical cells not more than 20 mm in diameter)

A cell or component cell is to be crushed between two flat surfaces. The crushing is to be gradual with a speed of approximately 1.5 cm/s at the first point of contact. The crushing is to be continued until the first of the three options below is reached.

- The applied force reaches $13 \text{ kN} \pm 0.78 \text{ kN}$;
- The voltage of the cell drops by at least 100 mV; or
- The cell is deformed by 50% or more of its original thickness.

Once the maximum pressure has been obtained, the voltage drops by 100 mV or more, or the cell is deformed by at least 50% of its original thickness, the pressure shall be released.

本测试单位保证测试的客观公正性，并对委托单位的商业秘密履行保密义务；委托单位对样品的代表性和资料的真实性负责，本测试单位仅对样品负责，委托单位对于测试结果的使用、使用所产生的直接或间接损失及一切法律后果，本测试单位不承担任何经济和法律后果；本《测试报告》如无专用章和批准人签字或被复制，则无效；任何对本《测试报告》未经授权的部分或全部转载、篡改、伪造或复制行为都是违法的，将被追究民事、行政甚至刑事责任。

防伪说明：(1)《测试报告》的编号是唯一的，即每一个报告编号仅对应唯一的《测试报告》；
(2)《测试报告》采用特制防伪纸张印制，纸张表面带有“PONY”防伪纹路，该防伪纹路不支持复印，即复制件不会带有“PONY”防伪纹路；
(3)《测试报告》采用的防伪纸张内部亦加带有高科技“PONY”防伪水印，只有在验钞机等紫外线照射下方可显出无色荧光防伪字样；
(4)《测试报告》所需防伪标签中的一部分加盖于本测试单位的留底报告上，《测试报告》与本测试单位留底报告的标签应拼合完整无缺。

PONY 谱尼测试
Pony Testing International Group

www.ponytest.com ☎Hotline 400-819-5688

Add: 北京市海淀区苏州街49-3号雷普威	上海市徐汇区任平路680号35号楼4层	深圳市南山区创业路中兴工业城6栋3层	青岛市崂山区株洲路190号0层
Tel: (010) 82618116	(021) 64851999	(0755) 26050909	(0532) 98706866
Add: 天津市南开区红旗路冀寓大厦10层	宁波市高新区新晖路150号二期4号楼4层	广州市海珠区敦和路189号海珠科技园3号楼7层	
Tel: (022) 27360730	(0574) 87736499	(020) 89224310	



Pony Testing International Group

A prismatic or pouch cell shall be crushed by applying the force to the widest side. A button/coin cell shall be crushed by applying the force on its flat surfaces. For cylindrical cells, the crush force shall be applied perpendicular to the longitudinal axis.

Each test cell or component cell is to be subjected to one crush only. The test sample shall be observed for a further 6 h. The test shall be conducted using test cells or component cells that have not previously been subjected to other tests.

Cells and component cells meet this requirement if their external temperature does not exceed 170 °C and there is no disassembly and no fire during the test and within six hours after this test.

T.7 Overcharge

The charge current shall be twice the manufacturer's recommended maximum continuous charge current. The minimum voltage of the test shall be as follows:

- (a) When the manufacturer's recommended charge voltage is not more than 18V, the minimum voltage of the test shall be the lesser of two times the maximum charge voltage of the battery or 22V.
- (b) When the manufacturer's recommended charge voltage is more than 18V, the minimum voltage of the test shall be 1.2 times the maximum charge voltage.

Tests are to be conducted at ambient temperature; the duration of the test shall be 24 hours.

Rechargeable batteries meet this requirement if there is no disassembly and no fire during the test and within seven days after the test.

T.8 Forced discharge

Each cell shall be forced discharged at ambient temperature by connecting it in series with a 12V D.C. power supply at an initial current equal to the maximum discharge current specified by the manufacturer.

The specified discharge current is to be obtained by connecting a resistive load of the appropriate size and rating in series with the test cell. Each cell shall be forced discharged for a time interval (in hours) equal to its rated capacity divided by the initial test current (in ampere).

Primary or rechargeable cells meet this requirement if there is no disassembly and no fire during the test and within seven days after the test.

本测试单位保证测试的客观公正性，并对委托单位的商业秘密履行保密义务；委托单位对样品的代表性和资料的真实性负责，本测试单位仅对样品负责，委托单位对于测试结果的使用、使用所产生的直接或间接损失及一切法律后果，本测试单位不承担任何经济和法律责任；本《测试报告》如无专用章和批准人签字或被复制，则无效；任何对本《测试报告》未经授权的部分或全部转载、篡改、伪造或复制行为都是违法的，将被追究民事、行政甚至刑事责任。

防伪说明：(1)《测试报告》的报告编号是唯一的，即每一个报告编号仅对应唯一的《测试报告》；
 (2)《测试报告》采用特制防伪纸浆印制，纸张表面带有“PONY”防伪纹路，该防伪纹路不支持复印，即复制件不会带有“PONY”防伪纹路；
 (3)《测试报告》采用的防伪纸张内部亦加带有高科技“PONY”防伪水印，只有在验钞机等紫外线照射下方可显出无色荧光防伪字样；
 (4)《测试报告》所盖防伪骑缝章中的一部分加盖于本测试单位的留底报告上，《测试报告》与本测试单位留底报告的骑缝章应拼合完整无缺。

PONY 谱尼测试
Pony Testing International Group

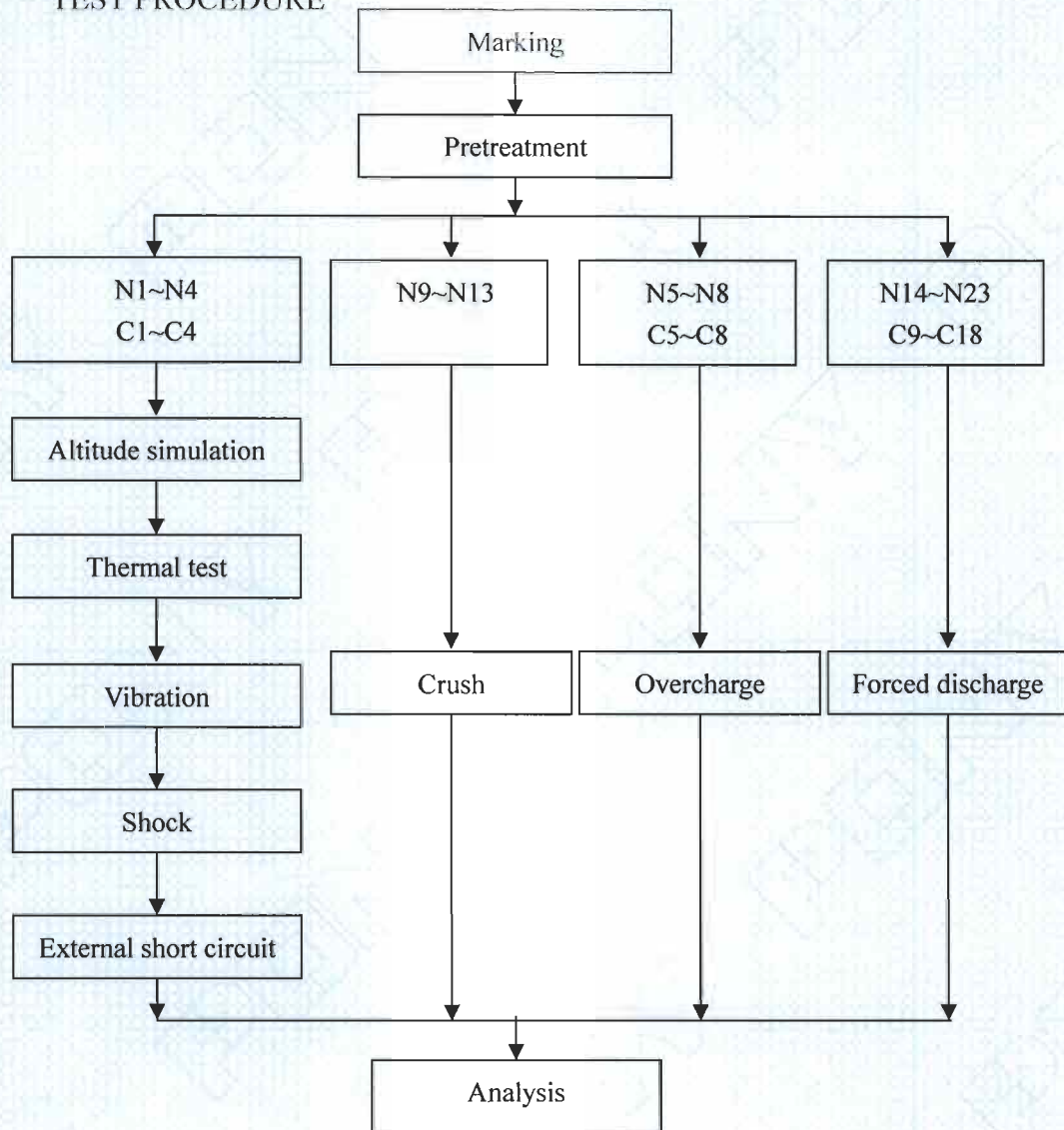
www.ponytest.com ☎Hotline 400-819-5688

Add: 北京市海淀区苏州街49-3号智博大厦	Add: 上海市徐汇区桂平路8680号35号楼4层	Add: 深圳市南山区创业路中兴工业城6栋1层	Add: 青岛市崂山区株洲路190号6层
Tel: (010) 82618116	Tel: (021) 64851999	Tel: (0755) 26050909	Tel: (0532) 88706866
Add: 天津市南开区红桥区鑫源大厦10层	Add: 宁波市高新区新源路150号二期4号楼4层	Add: 广州市海珠区敦和路189号海珠科技园3号楼7层	
Tel: (022) 27360730	Tel: (0574) 87736499	Tel: (020) 89224310	



Pony Testing International Group

VII、 TEST PROCEDURE



VIII、 MAIN TEST APPARATUS

IE-0121 Rechargeable battery test system

IE-0294 DC regulated power supply

IE-0280 Vacuum chamber

IE-0198 Battery extrusion needling machine

IE-0219 Temperature circulation chamber

IE-0125 Electronic balance

IE-0128 Vibration test instrument

IE-0090 Digital multimeter

IE-0287 Shock test instrument

IE-0185 Thermoelectric pair

IE-0281 Battery anti-explosion chamber

本测试单位保证测试的客观公正性，并对委托单位的商业秘密履行保密义务；委托单位对样品的代表性和资料的真实性负责；本测试单位仅对样品负责，委托单位对于测试结果的使用、使用所产生的直接或间接损失及一切法律后果，本测试单位不承担任何经济和法律后果；本《测试报告》如无专用章和批准人签字或被复制，则无效；任何对本《测试报告》未经授权的部分或全部转载、篡改、伪造或复制行为都是违法的，将被追究民事、行政甚至刑事责任。

防伪说明：(1)《测试报告》的报告编号是唯一的，即每一个报告编号仅对应唯一的《测试报告》；
 (2)《测试报告》采用特制防伪纸张印制，纸张表面带有“PONY”防伪纹路，该防伪纹路不支持复印，即复制件不会带有“PONY”防伪纹路；
 (3)《测试报告》采用的防伪纸张内部亦加带有高科技“PONY”防伪水印，只有在验钞机等紫外线照射下方可显出无色荧光防伪字样；
 (4)《测试报告》所盖防伪骑缝章中的一部分加盖于本测试单位的留底报告上，《测试报告》与本测试单位留底报告的骑缝章应拼合完整无缺。

PONY 谱尼测试
Pony Testing International Group

www.ponytest.com

Hotline 400-819-5688

Add: 北京市海淀区苏州街49-3

Tel: (010) 82618116

Add: 天津市南开区红新路福筑

Tel: (022) 27360730

Add: 上海市徐汇区桂平路680号

Tel: (021) 64851999

Add: 宁波市高新区新明路150号

Tel: (0574) 87736499

Add: 深圳市南山区创业路中兴

Tel: (0755) 26050900

Add: 广州市海珠区敦和路189号

Tel: (020) 89224310

Add: 青岛市崂山区株洲路190

Tel: (0532) 88706866



Pony Testing International Group

IX、 DATA

1. Altitude simulation

No.	Pre-test		After test		Mass loss (%)	Voltage loss (%)	Whether leakage, venting, disassembly, rupture, fire (Y/N)
	Mass (g)	Voltage (V)	Mass (g)	Voltage (V)			
N1	112.066	8.34	112.066	8.34	0.000	0.00	N
N2	111.001	8.34	111.001	8.33	0.000	0.12	N
N3	112.336	8.34	112.336	8.34	0.000	0.00	N
N4	111.038	8.34	111.038	8.34	0.000	0.00	N
C1	111.958	8.34	111.957	8.34	0.001	0.00	N
C2	111.463	8.34	111.463	8.34	0.000	0.00	N
C3	111.968	8.34	111.968	8.34	0.000	0.00	N
C4	111.235	8.34	111.235	8.34	0.000	0.00	N

2. Thermal test

No.	Pre-test		After test		Mass loss (%)	Voltage loss (%)	Whether leakage, venting, disassembly, rupture, fire (Y/N)
	Mass (g)	Voltage (V)	Mass (g)	Voltage (V)			
N1	112.066	8.34	112.034	8.24	0.029	1.20	N
N2	111.001	8.33	110.964	8.24	0.033	1.08	N
N3	112.336	8.34	112.306	8.25	0.027	1.08	N
N4	111.038	8.34	111.000	8.24	0.034	1.20	N
C1	111.957	8.34	111.925	8.25	0.029	1.08	N
C2	111.463	8.34	111.434	8.25	0.026	1.08	N
C3	111.968	8.34	111.931	8.24	0.033	1.20	N
C4	111.235	8.34	111.205	8.24	0.027	1.20	N

本测试单位保证测试的客观公正性，并对委托单位的商业秘密履行保密义务；委托单位对样品的代表性和资料的真实性负责，本测试单位仅对样品负责，委托单位对于测试结果的使用，使用所产生的直接或间接损失及一切法律后果，本测试单位不承担任何经济和法律后果；本《测试报告》如无专用章和批准人签字或被复制，则无效；任何对本《测试报告》未经授权的部分或全部转载、篡改、伪造或复制行为都是违法的，将被追究民事、行政甚至刑事责任。

防伪说明：(1)《测试报告》的报告编号是唯一的，即每一个报告编号仅对应唯一的《测试报告》；
 (2)《测试报告》采用特别防伪纸张印制，纸张表面带有“PONY”防伪纹路，该防伪纹路不支持复印，即复印件不会带有“PONY”防伪纹路；
 (3)《测试报告》采用的防伪纸张内部亦加带有高科技“PONY”防伪水印，只有在验钞机等紫外线照射下方可显出无色荧光防伪字样；
 (4)《测试报告》所盖防伪骑缝章中的一部分加盖于本测试单位的留底报告上，《测试报告》与本测试单位留底报告的骑缝章应组合完整无缺。

PONY 谱尼测试
Pony Testing International Group

www.ponytest.com ☎Hotline 400-819-5688

Add: 北京市海淀区苏州街49-3号源智大厦10层 Tel: (010) 82618116 Add: 天津市南开区红街路福安大厦10层 Tel: (022) 27360730	Add: 上海市徐汇区林平路680号35号楼4层 (021) 64851999 宁波市高新区新明路150号二期4号楼4层 (0574) 87736499	深圳市南山区创业路中兴工业城6栋1层 (0755) 26050909 广州市海珠区敦和路180号海康科技园3号楼7层 (020) 89224310	青岛市崂山区株洲路190号6层 (0532) 88706866
---	---	--	------------------------------------



Pony Testing International Group

3. Vibration

No.	Pre-test		After test		Mass loss (%)	Voltage loss (%)	Whether leakage, venting, disassembly, rupture, fire (Y/N)
	Mass (g)	Voltage (V)	Mass (g)	Voltage (V)			
N1	112.034	8.24	112.034	8.24	0.000	0.00	N
N2	110.964	8.24	110.964	8.24	0.000	0.00	N
N3	112.306	8.25	112.305	8.24	0.001	0.12	N
N4	111.000	8.24	111.000	8.24	0.000	0.00	N
C1	111.925	8.25	111.925	8.24	0.000	0.12	N
C2	111.434	8.25	111.433	8.25	0.001	0.00	N
C3	111.931	8.24	111.930	8.24	0.001	0.00	N
C4	111.205	8.24	111.205	8.24	0.000	0.00	N

4. Shock

No.	Pre-test		After test		Mass loss (%)	Voltage loss (%)	Whether leakage, venting, disassembly, rupture, fire (Y/N)
	Mass (g)	Voltage (V)	Mass (g)	Voltage (V)			
N1	112.034	8.24	112.034	8.24	0.000	0.00	N
N2	110.964	8.24	110.964	8.24	0.000	0.00	N
N3	112.305	8.24	112.305	8.23	0.000	0.12	N
N4	111.000	8.24	111.000	8.24	0.000	0.00	N
C1	111.925	8.24	111.925	8.24	0.000	0.00	N
C2	111.433	8.25	111.433	8.24	0.000	0.12	N
C3	111.930	8.24	111.929	8.24	0.001	0.00	N
C4	111.205	8.24	111.205	8.24	0.000	0.00	N

本测试单位保证测试的客观公正性，并对委托单位的商业秘密履行保密义务；委托单位对样品的代表性和资料的真实性负责，本测试单位仅对样品负责，委托单位对于测试结果的使用、使用所产生的直接或间接损失及一切法律后果，本测试单位不承担任何经济和法律责任；本《测试报告》如无专用章和批准人签字或被复制，则无效；任何对本《测试报告》未经授权的部分或全部转载、篡改、伪造或复制行为都是违法的，将被追究民事、行政甚至刑事责任。

防伪说明：(1)《测试报告》的报告编号是唯一的，即每一个报告编号仅对应唯一的《测试报告》；
 (2)《测试报告》采用特制防伪纸张印制，纸张表面带有“PONY”防伪纹路，该防伪纹路不支持复印，即复制件不会带有“PONY”防伪纹路；
 (3)《测试报告》采用的防伪纸张内部亦加带有高科技“PONY”防伪水印，只有在验钞机等紫外线照射下方可显出无色荧光防伪字样；
 (4)《测试报告》所盖防伪骑缝章中的一部分加盖于本测试单位的留底报告上，《测试报告》与本测试单位留底报告的骑缝章应拼合完整无缺。

PONY 谱尼测试
Pony Testing International Group

www.ponytest.com ☎Hotline 400-819-5688

Add: 北京市海淀区苏州街49-3号源智大厦	Add: 上海市徐汇区林平路680号35号楼4层	Add: 深圳市南山区创业路中兴工业城6栋1层	Add: 青岛市崂山区株洲路190号6层
Tel: (010) 82618116	Tel: (021) 64851990	Tel: (0755) 26050900	Tel: (0532) 88706866
Add: 天津市南开区红霞路赢貫大厦10层	Add: 宁波市高新区新明路150号二期4号楼4层	Add: 广州市海珠区敦和路189号海珠科技园3号楼7层	
Tel: (022) 27360730	Tel: (0574) 87736499	Tel: (020) 89224310	



Pony Testing International Group

5. External short circuit

No.	Peak temperature (°C)	Whether disassembly, rupture, fire (Y/N)
N1	55	N
N2	56	N
N3	58	N
N4	55	N
C1	57	N
C2	55	N
C3	56	N
C4	55	N

6. Crush

No.	Peak temperature (°C)	Whether disassembly, rupture, fire (Y/N)
N9	25	N
N10	26	N
N11	26	N
N12	25	N
N13	26	N

7. Overcharge

No.	Whether disassembly, fire (Y/N)
N5	N
N6	N
N7	N
N8	N
C5	N
C6	N
C7	N
C8	N

本测试单位保证测试的客观公正性，并对委托单位的商业秘密履行保密义务；委托单位对样品的代表性和资料的真实性负责，本测试单位仅对样品负责，委托单位对于测试结果的使用、使用所产生的直接或间接损失及一切法律后果，本测试单位不承担任何经济和法律责任；本《测试报告》如无专用章和批准人签字或被复制、篡改、删减、任何对本《测试报告》未经授权的部分或全部转载、篡改、伪造或复制行为都是违法的，将被追究民事、行政甚至刑事责任。

防伪说明：(1)《测试报告》的报告编号是唯一的，即每一个报告编号只对应唯一的《测试报告》；
 (2)《测试报告》采用特制防伪纸张印制，纸张表面带有“PONY”防伪纹路，该防伪纹路不支持复印，即复制件不会带有“PONY”防伪纹路；
 (3)《测试报告》采用的防伪纸张内部亦加带有高科技“PONY”防伪水印，只有在验钞机等紫外线照射下方可显出无色荧光防伪字样；
 (4)《测试报告》所盖防伪骑缝章中的一部分加盖于本测试单位的留底报告上，《测试报告》与本测试单位留底报告的骑缝章应拼合完整无缝。

PONY 谱尼测试
Pony Testing International Group

www.ponytest.com ☎Hotline 400-819-5688

Add: 北京市海淀区苏州街49-3号源智大厦10层 Tel: (010) 82618116 Add: 天津市南开区红新路集贤里10层 Tel: (022) 27360730	Add: 上海市徐汇区桂平路680号35号楼4层 (021) 64851999 宁波市高新区新明路150号二期4号楼4层 (0574) 87736499	Add: 深圳市南山区创业路中兴工业城6栋1层 (0755) 26050909 广州市海珠区敦和路189号海珠科技园3号楼7层 (020) 89224310	Add: 青岛市崂山区株洲路190号6层 (0532) 88706666
--	---	---	---



Pony Testing International Group

8. Forced discharge

No.	Whether disassembly, fire (Y/N)
N14	N
N15	N
N16	N
N17	N
N18	N
N19	N
N20	N
N21	N
N22	N
N23	N
C9	N
C10	N
C11	N
C12	N
C13	N
C14	N
C15	N
C16	N
C17	N
C18	N

本测试单位保证测试的客观公正性，并对委托单位的商业秘密履行保密义务；委托单位对样品的代表性和资料的真实性负责，本测试单位仅对样品负责，委托单位对于测试结果的使用，使用所产生的直接或间接损失及一切法律后果，本测试单位不承担任何经济和法律后果；本《测试报告》如无专用章和批准人签字或被复制，则无效；任何对本《测试报告》未经授权的部分或全部转载、篡改、伪造或复制行为都是违法的，将被追究民事、行政甚至刑事责任。

防伪说明：(1)《测试报告》的报告编号是唯一的，即每一个报告编号仅对应唯一的《测试报告》；
 (2)《测试报告》采用特制防伪纸张印制，纸张表面带有“PONY”防伪纹路，该防伪纹路不支持复印，即复制件不会带有“PONY”防伪纹路；
 (3)《测试报告》采用的防伪纸张内部亦加带有高科技“PONY”防伪水印，只有在验钞机等紫外线照射下方可显出无色荧光防伪字样；
 (4)《测试报告》所盖防伪骑缝章中的一部分加盖于本测试单位的留底报告上，《测试报告》与本测试单位留底报告的骑缝章应拼合完整无缺。

PONY 谱尼测试
Pony Testing International Group

www.ponytest.com ☎Hotline 400-819-5688

Add: 北京市海淀区苏州街49-3号首层	上海市徐汇区桂平路680号35号楼4层	深圳市南山区创业路中兴工业城6栋1层	青岛市崂山区株洲路190号6层
Tel: (010) 82618116	(021) 64851999	(0755) 26050909	(0632) 88706866
Add: 天津市南开区红马路福翼大厦10层	宁波市高新区新晖路150号二期4号楼4层	广州市海珠区敦和路189号海珠科技园3号楼7层	
Tel: (022) 27360730	(0574) 87736499	(020) 89224310	